

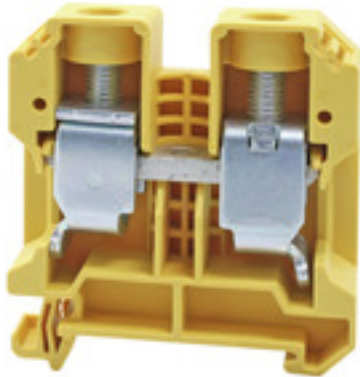
SAKDU 35 YE**Weidmüller Interface GmbH & Co. KG**

Klingenbergstraße 26

D-32758 Detmold

Germany

www.weidmueller.com



To feed through power, signal, and data is the classical requirement in electrical engineering and panel building. The insulating material, the connection system and the design of the terminal blocks are the differentiating features. A feed-through terminal block is suitable for joining and/or connecting one or more conductors. They could have one or more connection levels that are on the same potential or insulated against one another.

General ordering data

Version	Feed-through terminal, Screw connection, 35 mm ² , 800 V, 125 A, yellow
Order No.	1371830000
Type	SAKDU 35 YE
GTIN (EAN)	4050118173390
Qty.	25 pc(s).
Local product	Only available in certain countries

Creation date July 27, 2024 10:55:22 AM CEST

Catalogue status 13.07.2024 / We reserve the right to make technical changes.

SAKDU 35 YE

Weidmüller Interface GmbH & Co. KG

Klingenbergstraße 26

D-32758 Detmold

Germany

www.weidmueller.com

Technical data

General ordering data

Local product	Only available in certain countries
---------------	-------------------------------------

Dimensions and weights

Depth	58.25 mm	Depth (inches)	2.293 inch
Depth including DIN rail	59 mm	Height	52 mm
Height (inches)	2.047 inch	Width	15.9 mm
Width (inches)	0.626 inch	Net weight	56 g

Temperatures

Storage temperature	-25 °C...55 °C	Continuous operating temp., min.	-50 °C
Continuous operating temp., max.	120 °C		

Material data

Material	PA 66/6	Colour	yellow
UL 94 flammability rating	V-0		

System specifications

End cover plate required	Yes	Number of levels	1
Number of clamping points per level	2	Number of potentials per tier	1
Levels cross-connected internally	No	PE connection	No
Rail	TS 35		

Additional technical data

Explosion-tested version	No	Type of mounting	Snap-on
--------------------------	----	------------------	---------

Conductors for clamping (additional connection)

Connection type, additional connection	Screw connection
--	------------------

Conductors for clamping (rated connection)

Clamping range, max.	35 mm ²	Clamping range, min.	4 mm ²
Clamping screw	M 6	Connection cross-section, stranded, max.	35 mm ²
Connection cross-section, stranded, min.	4 mm ²	Connection direction	on side
Gauge to IEC 60947-1	B8	Number of connections	2
Stripping length	16 mm	Tightening torque, max.	5 Nm
Tightening torque, min.	4 Nm	Type of connection	Screw connection
Wire connection cross section AWG, max.	AWG 2	Wire connection cross section AWG, min.	AWG 12
Wire connection cross section, finely stranded, max.	35 mm ²	Wire connection cross section, finely stranded, min.	4 mm ²
Wire connection cross-section, finely stranded with wire-end ferrules DIN 46228/1, max.	35 mm ²	Wire connection cross-section, finely stranded with wire-end ferrules DIN 46228/1, min.	4 mm ²
Wire connection cross-section, finely stranded with wire-end ferrules DIN 46228/4, max.	35 mm ²	Wire connection cross-section, finely stranded with wire-end ferrules DIN 46228/4, min.	4 mm ²
Wire connection cross-section, solid core, max.	16 mm ²	Wire connection cross-section, solid core, min.	4 mm ²

Creation date July 27, 2024 10:55:22 AM CEST

SAKDU 35 YE

Weidmüller Interface GmbH & Co. KG

Klingenbergstraße 26

D-32758 Detmold

Germany

www.weidmueller.com

Technical data

General

Rail	TS 35	Wire connection cross section AWG, max.	AWG 2
Wire connection cross section AWG, min.	AWG 12		

Rating data

Rated cross-section	35 mm ²	Rated voltage	800 V
Rated DC voltage	800 V	Rated current	125 A
Current at maximum wires	125 A	Volume resistance according to IEC 60947-7-x	0.26 mΩ
Rated impulse withstand voltage	8 kV	Power loss in accordance with IEC 60947-7-x	4 W
Pollution severity	3	Surge voltage category	III

UL rating data

Certificate No. (UR)	E60693	Conductor size Factory wiring max. (UR)	2 AWG
Conductor size Factory wiring min. (UR)	12 AWG	Conductor size Field wiring max. (UR)	2 AWG
Conductor size Field wiring min. (UR)	12 AWG	Current size B (UR)	114 A
Current size C (UR)	114 A	Voltage size B (UR)	600 V
Voltage size C (UR)	600 V		

Classifications

ETIM 6.0	EC000897	ETIM 7.0	EC000897
ETIM 8.0	EC000897	ETIM 9.0	EC000897
ECLASS 9.0	27-14-11-20	ECLASS 9.1	27-14-11-20
ECLASS 10.0	27-14-11-20	ECLASS 11.0	27-14-11-20
ECLASS 12.0	27-14-11-20	ECLASS 13.0	27-25-01-01

Environmental Product Compliance

REACH SVHC	/
RoHS Compliance Status	Compliant without exemption

Approvals

Approvals



ROHS	Conform
UL File Number Search	UL Website
Certificate No. (UR)	E60693

Downloads

Approval/Certificate/Document of Conformity	CE Declaration of Conformity UKCA declaration of conformity
Engineering Data	CAD data – STEP
User Documentation	StorageConditionsTerminalBlocks
Catalogues	Catalogues in PDF-format
Brochures	

Creation date July 27, 2024 10:55:22 AM CEST

Catalogue status 13.07.2024 / We reserve the right to make technical changes.