

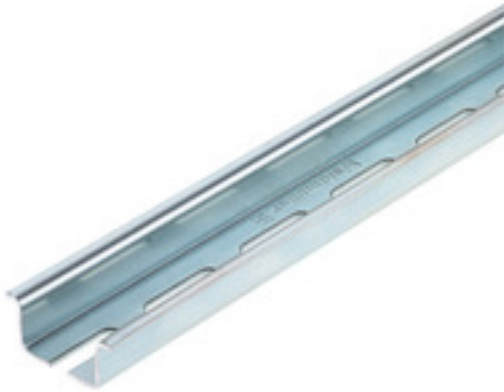
TS 35X15/LL 2M/ST/ZN**Weidmüller Interface GmbH & Co. KG**

Klingenbergstraße 26

D-32758 Detmold

Germany

www.weidmueller.com

Product image

Steel DIN rails are the most widespread on the market. Among metal DIN rails, they have the lowest shortcircuit protection, similar to stainless steel.

General ordering data

Version	Terminal rail, Accessories, Steel, galvanic zinc plated and passivated, Width: 2000 mm, Height: 35 mm, Depth: 15 mm, Slit width: 5.20 mm, Slit length: 25.00 mm
Order No.	023650000
Type	TS 35X15/LL 2M/ST/ZN
GTIN (EAN)	4008190183967
Qty.	2 m

Creation date July 22, 2024 10:15:01 AM CEST

Catalogue status 13.07.2024 / We reserve the right to make technical changes.

TS 35X15/LL 2M/ST/ZN

Weidmüller Interface GmbH & Co. KG

Klingenbergstraße 26

D-32758 Detmold

Germany

www.weidmueller.com

Technical data

Dimensions and weights

Depth	15 mm	Depth (inches)	0.591 inch
Height	35 mm	Height (inches)	1.378 inch
Width	2,000 mm	Width (inches)	78.74 inch
Net weight	627 g		

Mounting rail

Drill-hole diameter	5.2 mm		
Installation advice	Direct mounting		
Length of the terminal rail	nominal	2,000 mm	
	max.	2,000 mm	
	min.	0 mm	
Material	Steel		
Pre-punched mounting rail	Yes		
Short circuit strength corresponds to E-Cu wire	50 mm ²		
Short-time withstand current per second according to IEC 60947-7-2	6 kA		
Slit gap	11 mm		
Slit gap			
Slit length	25 mm		
Slit length			
Slit width	5.2 mm		
Slit width			
Slotted drill holes	Yes		
Solder eyelet hole diameter (D)	5.2 mm		
Spacing of holes, centre-to-centre	36 mm		
Standards	In accordance with DIN EN 60715		
Surface finish	galvanic zinc plated and passivated		
Thickness	1.5 mm		

Classifications

ETIM 6.0	EC001285	ETIM 7.0	EC001285
ETIM 8.0	EC001285	ETIM 9.0	EC001285
ECLASS 9.0	27-40-06-02	ECLASS 9.1	27-40-06-02
ECLASS 10.0	27-40-06-02	ECLASS 11.0	27-40-06-02
ECLASS 12.0	27-40-06-02	ECLASS 13.0	27-40-06-02

Environmental Product Compliance

REACH SVHC	/
RoHS Compliance Status	Compliant without exemption

Approvals

ROHS	Conform
------	---------

Downloads

Engineering Data	CAD data – STEP
Engineering Data	Zuken E3.S
User Documentation	StorageConditionsTerminalBlocks
Catalogues	Catalogues in PDF-format
Brochures	

Creation date July 22, 2024 10:15:01 AM CEST

Data sheet

TS 35X15/LL 2M/ST/ZN

Weidmüller Interface GmbH & Co. KG
Klingenbergstraße 26
D-32758 Detmold
Germany

www.weidmueller.com

Drawings

