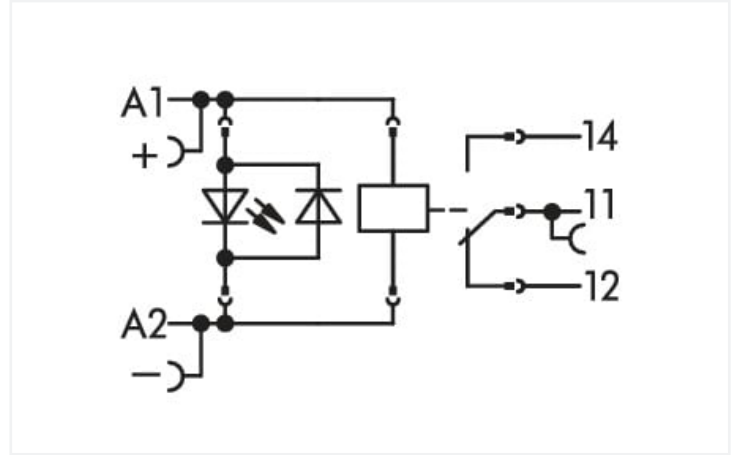
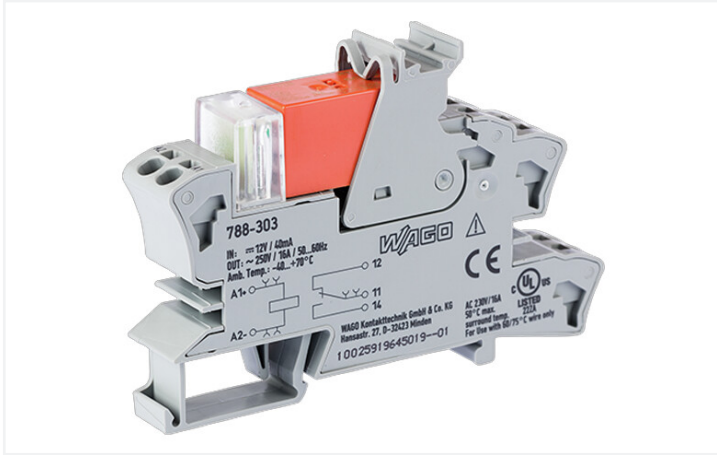


Data Sheet | Item Number: 788-303

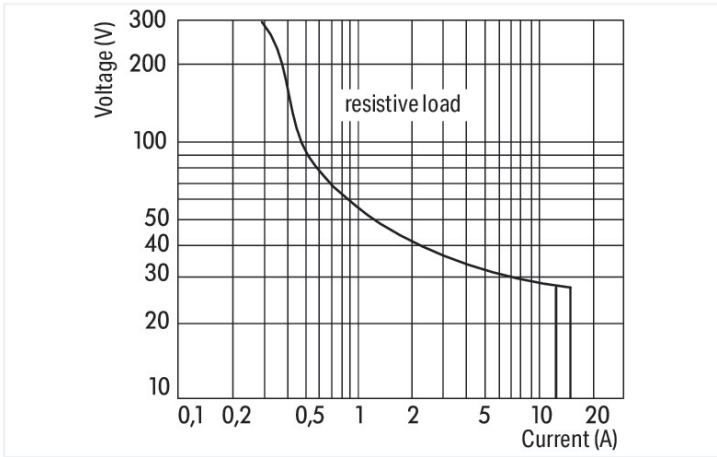
Relay module; Nominal input voltage: 12 VDC; 1 changeover contact; Limiting continuous current: 16 A; Red status indicator; Module width: 15 mm; 2,50 mm²; gray



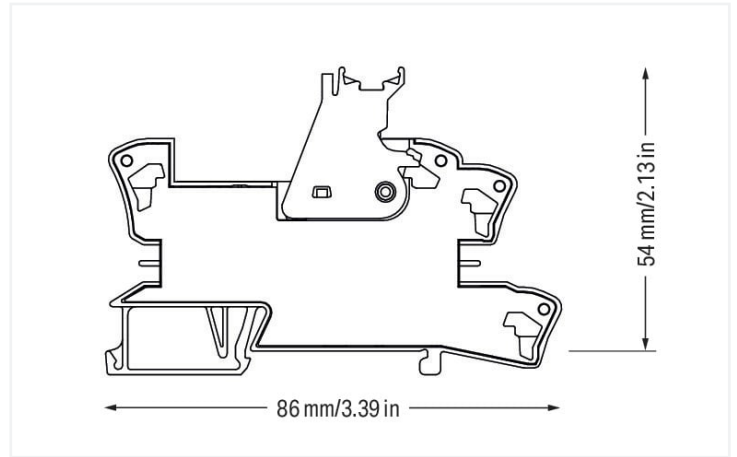
<https://www.wago.com/788-303>



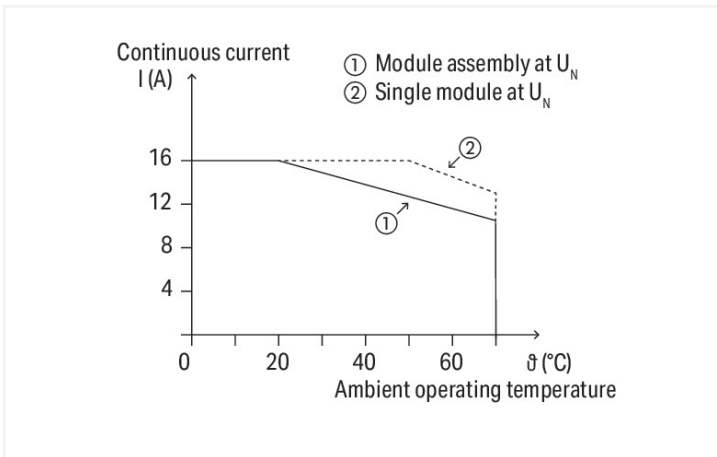
Color: ■ gray



DC load limit curve



Dimensions in mm



Current-carrying capacity curve

Notes

| | |
|--------------------|--|
| Safety information | A separator plate (e.g., 209-191) must be used for voltages greater than 250 V between adjacent relay modules and for compliance with the reinforced insulation requirements. |
| Note | <ul style="list-style-type: none"> Reinforced insulation between coil and contacts To protect the relay coils and contacts, inductive loads must be dampened with an effective protection circuit. |

Technical data

Control circuit

| | |
|--------------------------------|------------|
| Nominal input voltage U_N | DC 12 V |
| Input voltage range | $\pm 10\%$ |
| Nominal input current at U_N | 36 mA |

Load circuit

| | |
|--|--|
| Number of changeover/switchover contacts | 1 |
| Contact material (relay) | AgNi 90/10 |
| Limiting continuous current | 16 A |
| Inrush current (resistive) max. | (AC) 30 A / 4 s |
| Switching voltage (max.) | AC 250 V |
| Switching power (resistive) max. | AC 4000 VA; DC (see load limit curve) |
| Switching capacity | AC-15: 6 A / AC 250 V; DC-13: 2 A / DC 24 V |
| Recommended minimum load | 12 V / 10 mA |
| Pull-in time (typ.) | 8 ms |
| Drop-out time (typ.) | 6 ms |
| Bounce time (typ.) | 6 ms |
| Electrical life (NO; resistive load; 23 °C) | 30×10^3 switching operations |
| Mechanical life | 30×10^6 switching operations |
| Switching frequency with/without load (max.) | 6 min^{-1} / 1200 min^{-1} |

Signaling

| | |
|------------------|---------|
| Status indicator | Red LED |
|------------------|---------|

Safety and protection

| | |
|--|---|
| Rated voltage | 250 V |
| Rated surge voltage | 4 kV |
| Pollution degree | 3 |
| Dielectric strength (control/load circuit) (AC, 1 min) | 5 kVrms |
| Dielectric strength (open contact) (AC, 1 min) | 1 kVrms |
| Safety information | A separator plate (e.g., 209-191) must be used for voltages greater than 250 V between adjacent relay modules and for compliance with the reinforced insulation requirements. |
| Protection type | IP20 |

Connection data

| | |
|-------------------------|--|
| Connection technology | Push-in CAGE CLAMP® |
| Solid conductor | 0.34 ... 2.5 mm ² / 22 ... 14 AWG |
| Fine-stranded conductor | 0.34 ... 2.5 mm ² / 22 ... 14 AWG |
| Strip length | 9 ... 10 mm / 0.35 ... 0.39 inches |

Physical data

| | |
|-----------------------------------|----------------------|
| Width | 15 mm / 0.591 inches |
| Height | 86 mm / 3.386 inches |
| Depth from upper-edge of DIN-rail | 54 mm / 2.126 inches |

Mechanical data

| | |
|---------------|-------------|
| Mounting type | DIN-35 rail |
|---------------|-------------|

Material data

| | |
|-----------|----------|
| Color | gray |
| Fire load | 0.677 MJ |
| Weight | 45.9 g |

Environmental requirements

| | |
|--|--|
| Ambient temperature (operation at U_N) | -40 ... +70 °C |
| Ambient temperature UL (operation at U_N) | -40 ... +50 °C |
| Ambient temperature (storage) | -40 ... +70 °C |
| Processing temperature | -25 ... +50 °C |
| Temperature range of connection cable | $\geq (T_{\text{ambient}} + 20 \text{ K})$ |

Standards and specifications

| | |
|--------------------------|--|
| Standards/specifications | EN 61010-2-201 EN 61810-1 EN 61373 UL 508 (max. 10 A) |
|--------------------------|--|

Basic relay

| | |
|------------------|---------|
| WAGO Basic Relay | 788-150 |
|------------------|---------|

Commercial data

| | |
|-----------------------|--------------------------|
| Product Group | 6 (INTERFACE ELECTRONIC) |
| eCl@ss 10.0 | 27-37-16-01 |
| eCl@ss 9.0 | 27-37-16-01 |
| ETIM 8.0 | EC001437 |
| ETIM 7.0 | EC001437 |
| PU (SPU) | 20 (1) pcs |
| Packaging type | Box |
| Country of origin | CN |
| GTIN | 4055143184106 |
| Customs tariff number | 85364900990 |

| Environmental Product Compliance | |
|----------------------------------|-------------------------|
| RoHS Compliance Status | Compliant, No Exemption |

Approvals / Certificates

| General approvals | | | Declarations of conformity and manufacturer's declarations | | | | | | | | | | | |
|---|----------------|---------------------------------|--|--|--|----------|----------|------------------|--|---|---|--|---|---|
| | | | <table border="1"> <thead> <tr> <th>Approval</th> <th>Standard</th> <th>Certificate Name</th> </tr> </thead> <tbody> <tr> <td>EU-Declaration of Conformity WAGO GmbH & Co. KG</td> <td>-</td> <td>-</td> </tr> <tr> <td>UK-Declaration of Conformity WAGO GmbH & Co. KG</td> <td>-</td> <td>-</td> </tr> </tbody> </table> | | | Approval | Standard | Certificate Name | EU-Declaration of Conformity WAGO GmbH & Co. KG | - | - | UK-Declaration of Conformity WAGO GmbH & Co. KG | - | - |
| Approval | Standard | Certificate Name | | | | | | | | | | | | |
| EU-Declaration of Conformity WAGO GmbH & Co. KG | - | - | | | | | | | | | | | | |
| UK-Declaration of Conformity WAGO GmbH & Co. KG | - | - | | | | | | | | | | | | |
| Approval | Standard | Certificate Name | | | | | | | | | | | | |
| EAC Brjansker Zertifizierungsstelle | TP TC 004/2011 | EAC RU C-DE.AM02. B.00122/19 | | | | | | | | | | | | |
| UL Underwriters Laboratories Inc. (ORDINARY LOCATIONS) | UL 508 | E175199 Vol.1 Sec.6 | | | | | | | | | | | | |

Downloads

| Environmental Product Compliance | |
|--|-------------------|
| Compliance Search | |
| Environmental Product Compliance 788-303 | ↓ |

Documentation

| Bid Text | | | | Instruction Leaflet | | | |
|----------|------------|------------------|-------------------|------------------------------------|-----------------------|-------------------|-------------------|
| 788-303 | 19.02.2019 | xml 4.60 KB | ↓ | Sockets with Elementary Relay/ SSR | V 1.0.1 09.10.2020 | pdf 2271.22 KB | ↓ |
| 788-303 | 25.01.2019 | docx 16.30 KB | ↓ | | | | |

CAD/CAE-Data

| CAD data | | CAE data | |
|----------------------|-------------------|---------------------------|-------------------|
| 2D/3D Models 788-303 | ↓ | EPLAN Data Portal 788-303 | ↓ |
| | | WSCAD Universe 788-303 | ↓ |
| | | ZUKEN Portal 788-303 | ↓ |

1 Compatible Products

1.1 Optional Accessories

1.1.1 Basic relay

1.1.1.1 Basic relay



Item No.: 788-150

Basic relay; Nominal input voltage: 12 VDC; 1 changeover contact; Limiting continuous current: 16 A; Module width: 13 mm; Module height: 15 mm

1.1.2 Ferrule

1.1.2.1 Ferrule



Item No.: 216-241

Ferrule; Sleeve for 0.5 mm² / 20 AWG; insulated; electro-tin plated; electrolytic copper; gastight crimped; acc. to DIN 46228, Part 4/09.90; white



Item No.: 216-242

Ferrule; Sleeve for 0.75 mm² / 18 AWG; insulated; electro-tin plated; electrolytic copper; gastight crimped; acc. to DIN 46228, Part 4/09.90; gray



Item No.: 216-243

Ferrule; Sleeve for 1 mm² / AWG 18; insulated; electro-tin plated; electrolytic copper; gastight crimped; acc. to DIN 46228, Part 4/09.90; red



Item No.: 216-244

Ferrule; Sleeve for 1.5 mm² / AWG 16; insulated; electro-tin plated; electrolytic copper; gastight crimped; acc. to DIN 46228, Part 4/09.90; black

Item No.: 216-542

Twin ferrule; Sleeve for 2 x 1 mm² / AWG 2 x 18; red, insulated; 12 mm long; red

1.1.3 Indicators

1.1.3.1 Status indication



Item No.: 788-120

Accessories for relay modules; Operation status indicator: red; Nominal operating voltage: 24 VDC

1.1.4 Jumper

1.1.4.1 Jumper



Item No.: 788-118

Jumper; for jumper slot; 2-way; from 1 to 3; insulated; light gray



Item No.: 788-113

Jumper; for jumper slot; 2-way; insulated; light gray



Item No.: 859-402

Jumper; for jumper slot; 2-way; insulated; light gray



Item No.: 788-114

Jumper; for jumper slot; 3-way; insulated; light gray



Item No.: 788-115

Jumper; for jumper slot; 4-way; insulated; light gray



Item No.: 788-116

Jumper; for jumper slot; 6-way; insulated; light gray



Item No.: 788-117

Jumper; for jumper slot; 8-way; insulated; light gray

1.1.5 Marking

1.1.5.1 Double marker carrier



Item No.: 209-128

Adaptor; gray

1.1.5.2 Group marker carrier



Item No.: 249-105

Group marker carrier; gray



Item No.: 209-145

Group marker carrier; white

1.1.5.3 Marker



Item No.: 209-183

Marker; white



Item No.: 793-502

WMB marking card; as card; MARKED; 1 ... 10 (10x); not stretchable; Horizontal marking; snap-on type; white



Item No.: 793-503

WMB marking card; as card; MARKED; 11 ... 20 (10x); not stretchable; Horizontal marking; snap-on type; white



Item No.: 793-504

WMB marking card; as card; MARKED; 21 ... 30 (10x); not stretchable; Horizontal marking; snap-on type; white



Item No.: 793-505

WMB marking card; as card; MARKED; 31 ... 40 (10x); not stretchable; Horizontal marking; snap-on type; white



Item No.: 793-501

WMB marking card; as card; not stretchable; plain; snap-on type; white



Item No.: 2009-115

WMB-Inline; for Smart Printer; 1500 pieces on roll; stretchable 5 - 5.2 mm; plain; snap-on type; white

1.1.5.4 Marking devices



Item No.: 210-110

Fiber-tip pen

1.1.5.5 Marking strip



Item No.: 2009-110

Marking strips; for Smart Printer; on reel; not stretchable; plain; snap-on type; white

1.1.5.6 Protective marker cover



Item No.: 209-184

Protection cover; transparent

1.1.6 Tool

1.1.6.1 Operating tool

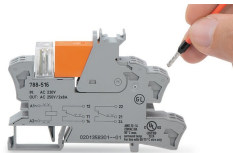


Item No.: 210-720

Operating tool; Blade: 3.5 x 0.5 mm; with a partially insulated shaft; multicoloured

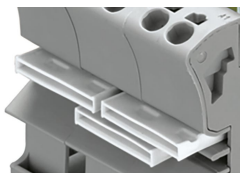
Installation Notes

Conductor termination



Conductor termination

Commoning



Easy commoning using adjacent jumpers

Marking



Marking using WMB Multi markers and group marker carriers.