

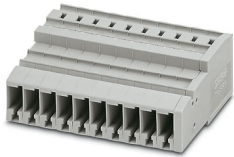
# SC 4/10 - COMBI receptacle



3042531

<https://www.phoenixcontact.com/in/products/3042531>

Please be informed that the data shown in this PDF document is generated from our Online Catalog. Please find the complete data in the user documentation. Our General Terms of Use for Downloads are valid.



COMBI receptacle, nom. voltage: 800 V, nominal current: 32 A, number of connections: 2, number of positions: 10, connection method: Spring-cage connection, Rated cross section: 4 mm<sup>2</sup>, cross section: 0.08 mm<sup>2</sup> - 6 mm<sup>2</sup>, color: gray

## Your advantages

- Standard strain relief can be used
- Tested for railway applications

## Commercial Data

Item number	3042531
Packing unit	25 pc
Minimum order quantity	25 pc
Sales Key	BE2
Product Key	BE2145
Catalog Page	Page 341 (C-1-2019)
GTIN	4046356012676
Weight per Piece (including packing)	52.14 g
Weight per Piece (excluding packing)	52.14 g
Customs tariff number	85366990
Country of origin	PL

# SC 4/10 - COMBI receptacle



3042531

<https://www.phoenixcontact.com/in/products/3042531>

## Technical Data

### Product properties

Product type	Terminal coupling
Number of positions	10
Pitch	6.2 mm
Area of application	Railway industry
	Machine building
	Plant engineering
Number of connections	2
Number of rows	1

### Insulation characteristics

Overvoltage category	III
Degree of pollution	3

### Electrical properties

Rated surge voltage	8 kV
Maximum power dissipation for nominal condition	1.02 W

### Connection data

Nominal cross section	4 mm <sup>2</sup>
Stripping length	8 mm ... 10 mm
Internal cylindrical gage	A4
Connection in acc. with standard	IEC 61984
Conductor cross section rigid	0.08 mm <sup>2</sup> ... 6 mm <sup>2</sup>
Cross section AWG	28 ... 10 (converted acc. to IEC)
Conductor cross section flexible	0.08 mm <sup>2</sup> ... 4 mm <sup>2</sup>
Conductor cross section, flexible [AWG]	28 ... 10 (converted acc. to IEC)
Conductor cross-section flexible (ferrule without plastic sleeve)	0.14 mm <sup>2</sup> ... 4 mm <sup>2</sup>
Flexible conductor cross section (ferrule with plastic sleeve)	0.14 mm <sup>2</sup> ... 4 mm <sup>2</sup>
2 conductors with the same cross section, flexible, with TWIN ferrule with plastic sleeve	0.5 mm <sup>2</sup> ... 1 mm <sup>2</sup>
Nominal current	32 A
Maximum load current	32 A (with 6 mm <sup>2</sup> conductor cross section)
Nominal voltage	800 V
Nominal cross section	4 mm <sup>2</sup>

### Dimensions

Width	62 mm
End cover width	3.2 mm
Height	22.3 mm
Length	48.6 mm
Pitch	6.2 mm

# SC 4/10 - COMBI receptacle



3042531

<https://www.phoenixcontact.com/in/products/3042531>

## Material specifications

Color	gray
Flammability rating according to UL 94	V0
Insulating material group	I
Insulating material	PA
Static insulating material application in cold	-60 °C
Temperature index of insulation material (DIN EN 60216-1 (VDE 0304-21))	130 °C
Relative insulation material temperature index (Elec., UL 746 B)	130 °C
Fire protection for rail vehicles (DIN EN 45545-2) R22	HL 1 - HL 3
Fire protection for rail vehicles (DIN EN 45545-2) R23	HL 1 - HL 3
Fire protection for rail vehicles (DIN EN 45545-2) R24	HL 1 - HL 3
Fire protection for rail vehicles (DIN EN 45545-2) R26	HL 1 - HL 3
Calorimetric heat release NFPA 130 (ASTM E 1354)	28 MJ/kg
Surface flammability NFPA 130 (ASTM E 162)	passed
Specific optical density of smoke NFPA 130 (ASTM E 662)	passed
Smoke gas toxicity NFPA 130 (SMP 800C)	passed

## Mechanical properties

### Mechanical data

Open side panel	Yes
-----------------	-----

## Environmental and real-life conditions

### Ambient conditions

Ambient temperature (operation)	-60 °C ... 105 °C (max. short-term operating temperature RTI Elec.)
Ambient temperature (storage/transport)	-25 °C ... 60 °C (for a short time, not exceeding 24 h, -60 °C to +70 °C)
Ambient temperature (assembly)	-5 °C ... 70 °C
Ambient temperature (actuation)	-5 °C ... 70 °C
Permissible humidity (storage/transport)	30 % ... 70 %

## Standards and regulations

Connection in acc. with standard	IEC 61984
----------------------------------	-----------

# SC 4/10 - COMBI receptacle

3042531

<https://www.phoenixcontact.com/in/products/3042531>

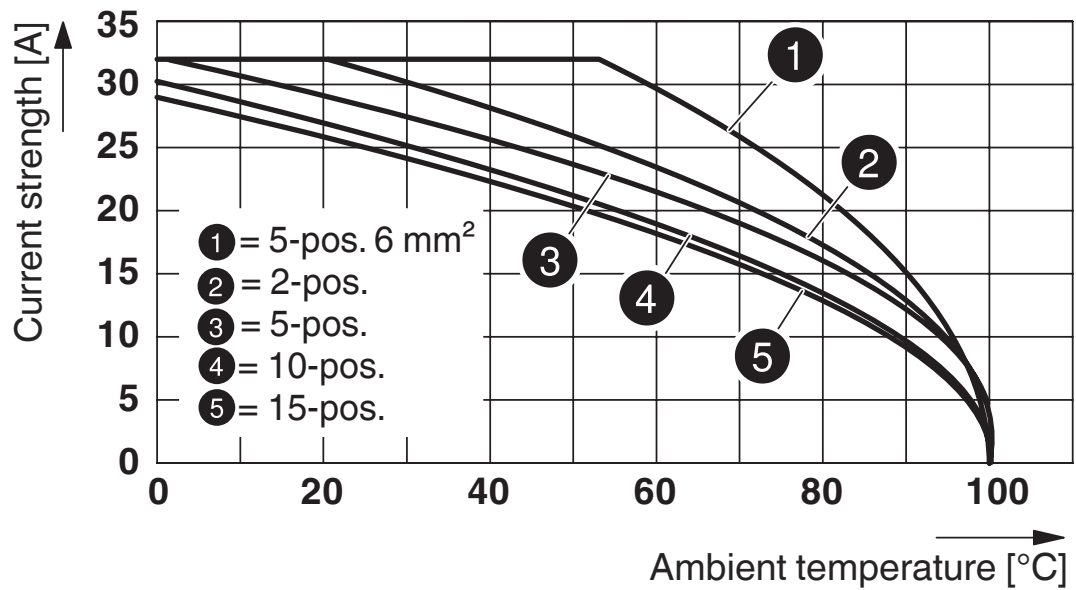


## Drawings

Circuit diagram



Diagram



# SC 4/10 - COMBI receptacle



3042531

<https://www.phoenixcontact.com/in/products/3042531>

## Approvals



**EAC**

Approval ID: RU C-DE.BL08.B.00511



**cULus Recognized**

Approval ID: E60425

	Nominal Voltage $U_N$	Nominal Current $I_N$	Cross Section AWG	Cross Section $\text{mm}^2$
Use group B				
	600 V	30 A	28 - 10	-
Use group C				
	600 V	30 A	28 - 10	-

# SC 4/10 - COMBI receptacle



3042531

<https://www.phoenixcontact.com/in/products/3042531>

## Classifications

### ECLASS

ECLASS-11.0	27141151
ECLASS-12.0	27141151
ECLASS-13.0	27250306

### ETIM

ETIM 8.0	EC002021
----------	----------

### UNSPSC

UNSPSC 21.0	39121400
-------------	----------

# SC 4/10 - COMBI receptacle

3042531

<https://www.phoenixcontact.com/in/products/3042531>



## Environmental Product Compliance

China RoHS	Environmentally friendly use period: unlimited = EFUP-e
	No hazardous substances above threshold values

# SC 4/10 - COMBI receptacle

3042531

<https://www.phoenixcontact.com/in/products/3042531>



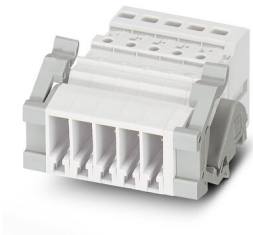
## Accessories

### SSL 2,5 - Panel feed-through

3043815

<https://www.phoenixcontact.com/in/products/3043815>

Panel feed-through, width: 5.2 mm, color: gray



---

### CZ/2 - Strain relief

3043831

<https://www.phoenixcontact.com/in/products/3043831>

Strain relief, length: 28.9 mm, width: 19.8 mm, number of positions: 2, color: black





## SC 4/10 - COMBI receptacle

3042531

<https://www.phoenixcontact.com/in/products/3042531>



## SZF 1-0,6X3,5 - Screwdriver

1204517

<https://www.phoenixcontact.com/in/products/1204517>



Actuation tool, for ST terminal blocks, also suitable for use as a bladed screwdriver, size: 0.6 x 3.5 x 100 mm, 2-component grip, with non-slip grip

---

## ST-BW - Actuation tool

1207608

<https://www.phoenixcontact.com/in/products/1207608>



Actuation tool, for all 2.5 mm<sup>2</sup> - 4.0 mm<sup>2</sup> spring-cages

## SC 4/10 - COMBI receptacle

3042531

<https://www.phoenixcontact.com/in/products/3042531>



## PC - Coding star

3040588

<https://www.phoenixcontact.com/in/products/3040588>



Coding star, length: 3 mm, width: 3 mm, height: 6 mm, color: red

---

## MPS-MT - Test plugs

0201744

<https://www.phoenixcontact.com/in/products/0201744>



Test plugs, with solder connection up to 1 mm<sup>2</sup> conductor cross section, number of positions: 1, color: gray

# SC 4/10 - COMBI receptacle

3042531

<https://www.phoenixcontact.com/in/products/3042531>



## MPS-IH WH - Insulating sleeve

0201663

<https://www.phoenixcontact.com/in/products/0201663>

Insulating sleeve, color: white



---

## MPS-IH RD - Insulating sleeve

0201676

<https://www.phoenixcontact.com/in/products/0201676>

Insulating sleeve, color: red



## SC 4/10 - COMBI receptacle

3042531

<https://www.phoenixcontact.com/in/products/3042531>

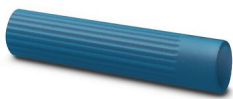


### MPS-IH BU - Insulating sleeve

0201689

<https://www.phoenixcontact.com/in/products/0201689>

Insulating sleeve, color: blue



---

### MPS-IH YE - Insulating sleeve

0201692

<https://www.phoenixcontact.com/in/products/0201692>

Insulating sleeve, color: yellow



# SC 4/10 - COMBI receptacle

3042531

<https://www.phoenixcontact.com/in/products/3042531>



## MPS-IH GN - Insulating sleeve

0201702

<https://www.phoenixcontact.com/in/products/0201702>

Insulating sleeve, color: green



---

## MPS-IH GY - Insulating sleeve

0201728

<https://www.phoenixcontact.com/in/products/0201728>

Insulating sleeve, color: gray



# SC 4/10 - COMBI receptacle

3042531

<https://www.phoenixcontact.com/in/products/3042531>



## MPS-IH BK - Insulating sleeve

0201731

<https://www.phoenixcontact.com/in/products/0201731>

Insulating sleeve, color: black



---

## ISH 4/0,5 - Insulating sleeve

3002885

<https://www.phoenixcontact.com/in/products/3002885>

Insulating sleeve, color: gray



# SC 4/10 - COMBI receptacle

3042531

<https://www.phoenixcontact.com/in/products/3042531>



## ISH 4/1,0 - Insulating sleeve

3002898

<https://www.phoenixcontact.com/in/products/3002898>



Insulating sleeve, color: black

---

Phoenix Contact 2023 © - all rights reserved

<https://www.phoenixcontact.com>

PHOENIX CONTACT (I) Pvt. Ltd.

A-58/2, Okhla Industrial Area, Phase - II, New Delhi-110 020

+91.1275.71420

[info@phoenixcontact.co.in](mailto:info@phoenixcontact.co.in)