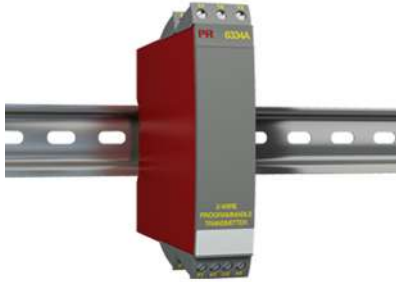


## 2-wire programmable transmitter



### 6334A

- TC input
- High measurement accuracy
- Galvanic isolation
- Programmable sensor error value
- 1- or 2-channel version



#### Application

- Linearized temperature measurement with TC sensor.
- Amplification of bipolar mV signals to a 4...20 mA signal, optionally linearized according to a defined linearization function.

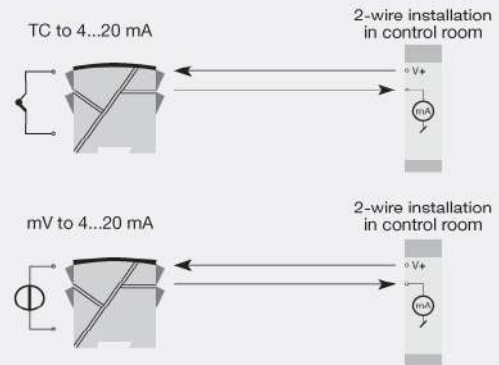
#### Technical characteristics

- Within a few seconds the user can program PR6334A to measure temperatures within all TC ranges defined by the norms.
- Cold junction compensation (CJC) with a built-in temperature sensor.
- A limit can be programmed on the output signal.
- Continuous check of vital stored data for safety reasons.

#### Mounting / installation

- Mounted vertically or horizontally on a DIN rail. Using the 2-channel version up to 84 channels can be mounted per meter.
- The 6334A can be mounted in zone 2 and zone 22.

#### Applications



**Order**

Type	Version	Galvanic isolation	Channels
6334	Zone 2, 22 / Div. 2	: A 1500 VAC : Z	Single : A Double : B

**Environmental Conditions**

Operating temperature.....	-40°C to +85°C
Storage temperature.....	-40°C to +85°C
Calibration temperature.....	20...28°C
Relative humidity.....	< 95% RH (non-cond.)
Protection degree.....	IP20

**Mechanical specifications**

Dimensions (HxWxD).....	109 x 23.5 x 104 mm
Weight (1 / 2 channels).....	145 / 185 g
DIN rail type.....	DIN EN 60715/35 mm
Wire size.....	0.13...2.08 mm <sup>2</sup> AWG 26...14 stranded wire
Screw terminal torque.....	0.5 Nm

**Common specifications****Supply**

Supply voltage.....	7.2...35 VDC
Max. required power.....	≤ 0.8 W/≤ 1.6 W (1 ch./2 ch.)
Internal power dissipation.....	0.17...0.8 W

**Isolation voltage**

Isolation voltage, test / working.....	1.5 kVAC / 50 VAC
--	-------------------

**Response time**

Response time (programmable).....	1...60 s
Voltage drop.....	7.2 VDC
Warm-up time.....	5 min.
Programming.....	Loop Link
Signal / noise ratio.....	Min. 60 dB
Accuracy.....	Better than 0.05% of selected range
EEPROM error check.....	< 3.5 s
Signal dynamics, input.....	18 bit
Signal dynamics, output.....	16 bit
Effect of supply voltage change.....	< 0.005% of span / VDC
EMC immunity influence.....	< ±0.5% of span
Extended EMC immunity: NAMUR NE21, A criterion, burst.....	< ±1% of span

**Input specifications****Common input specifications**

Max. offset.....	50% of selected max. value
------------------	----------------------------

**TC input**

Thermocouple type.....	B, E, J, K, L, N, R, S, T, U, W3, W5, LR
Cold junction compensation (CJC).....	< ±1.0°C

**Voltage input**

Measurement range.....	-12...150 mV
Min. measurement range (span).....	5 mV
Input resistance.....	Nom. 10 MΩ

**Output specifications****Current output**

Signal range.....	4...20 mA
Min. signal range.....	16 mA
Load (@ current output).....	≤ (Vsupply - 7.2) / 0.023 [Ω]
Sensor error indication.....	Programmable 3.5...23 mA
NAMUR NE43 Upscale/Downscale.....	23 mA / 3.5 mA

**Common output specifications**

Updating time.....	440 ms
of span.....	= of the presently selected range

**Observed authority requirements**

EMC.....	2014/30/EU & UK SI 2016/1091
ATEX.....	2014/34/EU & UK SI 2016/1107
RoHS.....	2011/65/EU & UK SI 2012/3032
EAC.....	TR-CU 020/2011
EAC Ex.....	TR-CU 012/2011

**Approvals**

ATEX.....	DEKRA 20ATEX0096X
IECEx.....	DEK 20.0059X
EAC Ex.....	RU C-DK.HA65.B.00355/19