

PTRV 8 /WHRD - Marshalling panel



3270133

<https://www.phoenixcontact.com/in/products/3270133>

Please be informed that the data shown in this PDF document is generated from our Online Catalog. Please find the complete data in the user documentation. Our General Terms of Use for Downloads are valid.



Marshalling panel, nom. voltage: 250 V, nominal current: 8 A, connection method: Push-in connection, 1st, 2nd, 3rd, 4th, 5th, 6th, 7th and 8th level, Rated cross section: 1.5 mm², cross section: 0.14 mm² - 2.5 mm², mounting: NS 35/7,5, NS 35/15, color: gray, color of connection elements: white, red

Your advantages

- High contact quality thanks to push-in technology as a replacement for Wire-Wrap®, TERMI-POINT®, etc.
- Individual color assignment of cable and terminal point to ensure error-free, safe operation
- Tool-free wiring in a confined space thanks to compact size
- The 2.3 mm test connection enables testing between the conductors with test pins commonly used in the industry

Commercial Data

Item number	3270133
Packing unit	10 pc
Minimum order quantity	10 pc
Sales Key	BE6
Product Key	BE6211
Catalog Page	Page 50 (C-1-2019)
GTIN	4046356796163
Weight per Piece (including packing)	37.23 g
Weight per Piece (excluding packing)	37.23 g
Customs tariff number	85369010
Country of origin	PL

PTRV 8 /WHRD - Marshalling panel



3270133

<https://www.phoenixcontact.com/in/products/3270133>

Technical Data

Product properties

Product type	Marshalling terminal
Number of positions	2
Number of connections	32
Number of rows	8
Potentials	8

Insulation characteristics

Overvoltage category	III
----------------------	-----

Electrical properties

Rated surge voltage	4 kV
Maximum power dissipation for nominal condition	0.56 W

Connection data

Number of connections per level	4
Nominal cross section	1.5 mm ²

1st, 2nd, 3rd, 4th, 5th, 6th, 7th and 8th level

Stripping length	8 mm ... 10 mm
Connection in acc. with standard	IEC 60947-7-1
Conductor cross section rigid	0.14 mm ² ... 2.5 mm ²
Cross section AWG	26 ... 14 (converted acc. to IEC)
Conductor cross section flexible	0.14 mm ² ... 1.5 mm ²
Conductor cross section, flexible [AWG]	26 ... 14 (converted acc. to IEC)
Conductor cross-section flexible (ferrule without plastic sleeve)	0.14 mm ² ... 1.5 mm ²
Flexible conductor cross section (ferrule with plastic sleeve)	0.14 mm ² ... 1.5 mm ²
Nominal current	8 A
Maximum load current	8 A (with 1.5 mm ² conductor cross section)
Nominal voltage	250 V
Nominal cross section	1.5 mm ²

1st, 2nd, 3rd, 4th, 5th, 6th, 7th and 8th level Connection cross sections directly pluggable

Conductor cross section rigid	0.34 mm ² ... 2.5 mm ²
Conductor cross section, rigid [AWG]	20 ... 14 (converted acc. to IEC)
Conductor cross-section flexible (ferrule without plastic sleeve)	0.34 mm ² ... 1.5 mm ²
Flexible conductor cross section (ferrule with plastic sleeve)	0.34 mm ² ... 1.5 mm ²

Dimensions

Width	8.3 mm
Height NS 35/15	95 mm
Height NS 35/7,5	87.5 mm
Length	100 mm

PTRV 8 /WHRD - Marshalling panel



3270133

<https://www.phoenixcontact.com/in/products/3270133>

Material specifications

Color	gray
Color of connection elements	white (4x top)
	red (4x bottom)
Flammability rating according to UL 94	V0
Insulating material group	I
Insulating material	PA
Static insulating material application in cold	-60 °C
Temperature index of insulation material (DIN EN 60216-1 (VDE 0304-21))	125 °C
Relative insulation material temperature index (Elec., UL 746 B)	130 °C
Fire protection for rail vehicles (DIN EN 45545-2) R22	HL 1 - HL 3
Fire protection for rail vehicles (DIN EN 45545-2) R23	HL 1 - HL 3
Fire protection for rail vehicles (DIN EN 45545-2) R24	HL 1 - HL 3
Fire protection for rail vehicles (DIN EN 45545-2) R26	HL 1 - HL 3
Calorimetric heat release NFPA 130 (ASTM E 1354)	27,5 MJ/kg
Surface flammability NFPA 130 (ASTM E 162)	passed
Specific optical density of smoke NFPA 130 (ASTM E 662)	passed
Smoke gas toxicity NFPA 130 (SMP 800C)	passed

Electrical tests

Surge voltage test

Test voltage setpoint	4.8 kV
Result	Test passed

Temperature-rise test

Requirement temperature-rise test	Increase in temperature ≤ 45 K
Result	Test passed
Result	Test passed

Power-frequency withstand voltage

Test voltage setpoint	1.5 kV
Result	Test passed

Mechanical properties

Mechanical data

Open side panel	Yes
-----------------	-----

Mechanical tests

Mechanical strength

Result	Test passed
--------	-------------

Attachment on the carrier

DIN rail/fixing support	NS 35
-------------------------	-------

PTRV 8 /WHRD - Marshalling panel



3270133

<https://www.phoenixcontact.com/in/products/3270133>

Test force setpoint	1 N
Result	Test passed
Test for conductor damage and slackening	
Conductor cross section/weight	0.14 mm ² / 0.2 kg
	1.5 mm ² / 0.4 kg
	2.5 mm ² / 0.7 kg
Result	Test passed

Environmental and real-life conditions

Aging

Temperature cycles	192
Result	Test passed

Needle-flame test

Result	Test passed
--------	-------------

Oscillation/broadband noise

Specification	DIN EN 50155 (VDE 0115-200):2008-03
Spectrum	Service life test category 1, class B, body mounted
Frequency	$f_1 = 5 \text{ Hz}$ to $f_2 = 250 \text{ Hz}$
ASD level	6.12 (m/s ²) ² /Hz
Acceleration	3.12g
Test duration per axis	5 h
Test directions	X-, Y- and Z-axis
Result	Test passed

Shocks

Specification	DIN EN 50155 (VDE 0115-200):2008-03
Pulse shape	Half-sine
Acceleration	30g
Shock duration	18 ms
Number of shocks per direction	3
Test directions	X-, Y- and Z-axis (pos. and neg.)
Result	Test passed

Ambient conditions

Ambient temperature (operation)	-60 °C ... 105 °C (max. short-term operating temperature RTI Elec.)
Ambient temperature (storage/transport)	-25 °C ... 60 °C (for a short time, not exceeding 24 h, -60 °C to +70 °C)
Ambient temperature (assembly)	-5 °C ... 70 °C
Ambient temperature (actuation)	-5 °C ... 70 °C
Permissible humidity (storage/transport)	30 % ... 70 %

Standards and regulations

Connection in acc. with standard	IEC 60947-7-1
----------------------------------	---------------

PTRV 8 /WHRD - Marshalling panel

3270133

<https://www.phoenixcontact.com/in/products/3270133>

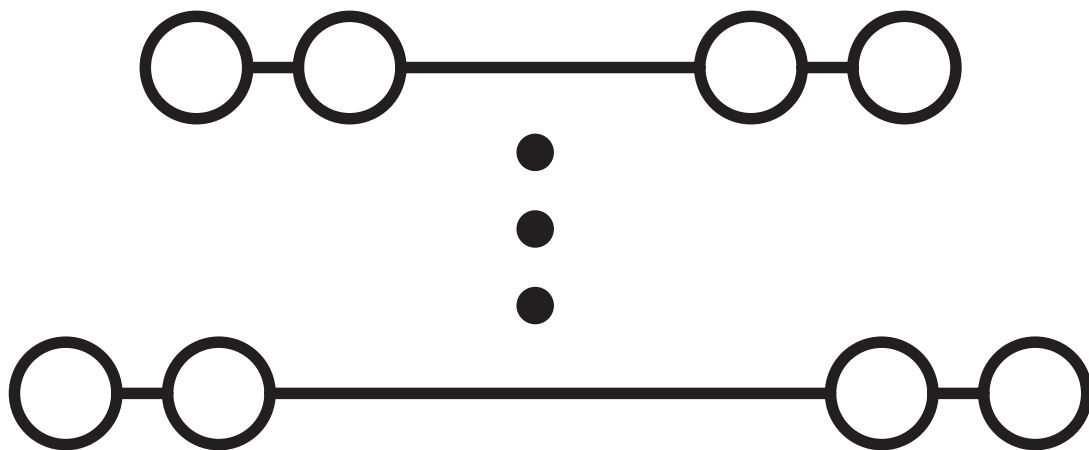


Mounting

Mounting type	NS 35/7,5
	NS 35/15

Drawings

Circuit diagram




PTRV 8 /WHRD - Marshalling panel



3270133


<https://www.phoenixcontact.com/in/products/3270133>


Approvals


 CSA Approval ID: 13631				
	Nominal Voltage U_N	Nominal Current I_N	Cross Section AWG	Cross Section mm^2
Use group B	300 V	10 A	26 - 14	-
Use group D	300 V	10 A	26 - 14	-

 IECEE CB Scheme Approval ID: NL-58817				
	Nominal Voltage U_N	Nominal Current I_N	Cross Section AWG	Cross Section mm^2
	250 V	8 A	-	-

 EAC Approval ID: RU C-DE.BL08.B.00682				
---	--	--	--	--

 cULus Recognized Approval ID: E60425				
	Nominal Voltage U_N	Nominal Current I_N	Cross Section AWG	Cross Section mm^2
Use group D	300 V	10 A	26 - 14	-

 KEMA-KEUR Approval ID: 71-102890				
	Nominal Voltage U_N	Nominal Current I_N	Cross Section AWG	Cross Section mm^2
Only flexible conductors	250 V	8 A	-	0.14 - 1.5
Only rigid conductors	250 V	8 A	-	0.14 - 2.5

 EAC Approval ID: B.01687				
--	--	--	--	--

PTRV 8 /WHRD - Marshalling panel



3270133

<https://www.phoenixcontact.com/in/products/3270133>

Classifications

ECLASS

ECLASS-11.0

27141120

ETIM

ETIM 8.0

EC000897

UNSPSC

UNSPSC 21.0

39121400

PTRV 8 /WHRD - Marshalling panel

3270133

<https://www.phoenixcontact.com/in/products/3270133>



Environmental Product Compliance

China RoHS	Environmentally friendly use period: unlimited = EFUP-e
	No hazardous substances above threshold values

PTRV 8 /WHRD - Marshalling panel

3270133

<https://www.phoenixcontact.com/in/products/3270133>

Accessories

DP-PTRV 8 - Spacer plate

3270166

<https://www.phoenixcontact.com/in/products/3270166>



Spacer plate, length: 100 mm, width: 8.3 mm, height: 86 mm, color: gray

CDC-PTRV - Retaining bracket

3270167

<https://www.phoenixcontact.com/in/products/3270167>



Retaining bracket, via four PTRV single modules, pitch: 8.3 mm, width: 35.6 mm, height: 71.5 mm, color: gray

PTRV 8 /WHRD - Marshalling panel

3270133

<https://www.phoenixcontact.com/in/products/3270133>

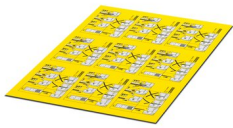


PT-IL - Mounting material

3208090

<https://www.phoenixcontact.com/in/products/3208090>

Operating decal for the push-in Technology



SZF 0-0,4X2,5 - Screwdriver

1204504

<https://www.phoenixcontact.com/in/products/1204504>



Actuation tool, for ST terminal blocks, also suitable for use as a bladed screwdriver, size: 0.4 x 2.5 x 75 mm, 2-component grip, with non-slip grip

PTRV 8 /WHRD - Marshalling panel

3270133

<https://www.phoenixcontact.com/in/products/3270133>



ST-BW 0 - Actuation tool

1200135

<https://www.phoenixcontact.com/in/products/1200135>

Actuation tool, for all 1.5 mm² spring cages from PT 1,5/S and FT 1,5/S



RPS - Reducing plug

0201647

<https://www.phoenixcontact.com/in/products/0201647>

Reducing plug, number of positions: 1, color: gray



PTRV 8 /WHRD - Marshalling panel

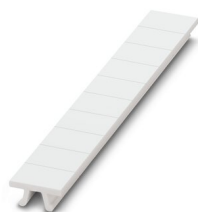
3270133

<https://www.phoenixcontact.com/in/products/3270133>

ZB 8,3:UNBEDRUCKT - Zack marker strip

0803444

<https://www.phoenixcontact.com/in/products/0803444>



Zack marker strip, Strip, white, unlabeled, can be labeled with: PLOTMARK, CMS-P1-PLOTTER, mounting type: snapped, for terminal block width: 8.3 mm, lettering field size: 10.5 x 8.3 mm

ZB 8,3,LGS:FORTL.ZAHLEN - Zack marker strip

0803480

<https://www.phoenixcontact.com/in/products/0803480>



Zack marker strip, Strip, white, labeled, can be labeled with: CMS-P1-PLOTTER, mounting type: snapped, for terminal block width: 8.3 mm, lettering field size: 10.5 x 8.3 mm

PTRV 8 /WHRD - Marshalling panel

3270133

<https://www.phoenixcontact.com/in/products/3270133>

ZB 8,3,QR:FORTL.ZAHLEN - Zack marker strip

0803479

<https://www.phoenixcontact.com/in/products/0803479>

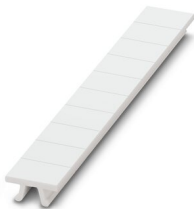


Zack marker strip, Strip, white, labeled, can be labeled with: CMS-P1-PLOTTER, mounting type: snapped, for terminal block width: 8.3 mm, lettering field size: 10.5 x 8.3 mm

ZB 8,3 CUS - Zack marker strip

8191573

<https://www.phoenixcontact.com/in/products/8191573>



Zack marker strip, Strip, white, labeled according to customer specifications, mounting type: snap into tall marker groove, for terminal block width: 8.3 mm, lettering field size: 10.5 x 8.3 mm

PTRV 8 /WHRD - Marshalling panel

3270133

<https://www.phoenixcontact.com/in/products/3270133>

TM-PTRV 8,QR:1-8 - Marker for terminal blocks

0803468

<https://www.phoenixcontact.com/in/products/0803468>



Marker for terminal blocks, white, labeled, mounting type: snapped, for terminal block width: 8 mm, lettering field size: 2.4 x 9.2 mm, Number of individual labels: 2

TM-PTRV 8,QR:8-1 - Marker for terminal blocks

0803470

<https://www.phoenixcontact.com/in/products/0803470>



Marker for terminal blocks, white, labeled, mounting type: snapped, for terminal block width: 8 mm, lettering field size: 2.4 x 9.2 mm

PTRV 8 /WHRD - Marshalling panel

3270133

<https://www.phoenixcontact.com/in/products/3270133>

TM-PTRV 8,QR:A-H - Marker for terminal blocks

0803471

<https://www.phoenixcontact.com/in/products/0803471>



Marker for terminal blocks, white, labeled, mounting type: snapped, for terminal block width: 8 mm, lettering field size: 2.4 x 9.2 mm

TM-PTRV 8,QR:H-A - Marker for terminal blocks

0803473

<https://www.phoenixcontact.com/in/products/0803473>



Marker for terminal blocks, white, labeled, mounting type: snapped, for terminal block width: 8 mm, lettering field size: 2.4 x 9.2 mm, Number of individual labels: 8

PTRV 8 /WHRD - Marshalling panel

3270133

<https://www.phoenixcontact.com/in/products/3270133>

D-PTRV 8 WH - End cover

3270154

<https://www.phoenixcontact.com/in/products/3270154>



End cover, length: 100 mm, width: 3.8 mm, height: 80.8 mm, color: white

D-PTRV 8 WH 1-8 - End cover

3270155

<https://www.phoenixcontact.com/in/products/3270155>



End cover, length: 100 mm, width: 2.2 mm, height: 80.8 mm, color: white

PTRV 8 /WHRD - Marshalling panel

3270133

<https://www.phoenixcontact.com/in/products/3270133>

D-PTRV 8 WH 1-8 LGS - End cover

3270240

<https://www.phoenixcontact.com/in/products/3270240>



End cover, length: 100 mm, width: 2.2 mm, height: 80.8 mm, color: white

D-PTRV 8 WH 8-1 - End cover

3270242

<https://www.phoenixcontact.com/in/products/3270242>



End cover, length: 100 mm, width: 2.2 mm, height: 80.8 mm, color: white

PTRV 8 /WHRD - Marshalling panel

3270133

<https://www.phoenixcontact.com/in/products/3270133>

D-PTRV 8 WH 8-1 LGS - End cover

3270244

<https://www.phoenixcontact.com/in/products/3270244>



End cover, length: 100 mm, width: 2.2 mm, height: 80.8 mm, color: white

D-PTRV 8 WH 1-16 - End cover

3270228

<https://www.phoenixcontact.com/in/products/3270228>



End cover, length: 100 mm, width: 2.2 mm, height: 80.8 mm, color: white

PTRV 8 /WHRD - Marshalling panel

3270133

<https://www.phoenixcontact.com/in/products/3270133>

D-PTRV 8 WH 1-16 LGS - End cover

3270229

<https://www.phoenixcontact.com/in/products/3270229>



End cover, length: 100 mm, width: 2.2 mm, height: 80.8 mm, color: white

D-PTRV 8 WH 9-16 - End cover

3270211

<https://www.phoenixcontact.com/in/products/3270211>



End cover, length: 100 mm, width: 2.2 mm, height: 80.8 mm, color: white

PTRV 8 /WHRD - Marshalling panel



3270133

<https://www.phoenixcontact.com/in/products/3270133>

D-PTRV 8 WH 9-16 LGS - End cover

3270212

<https://www.phoenixcontact.com/in/products/3270212>



End cover, length: 100 mm, width: 2.2 mm, height: 80.8 mm, color: white

D-PTRV 8 WH 17-24 - End cover

3270213

<https://www.phoenixcontact.com/in/products/3270213>



End cover, length: 100 mm, width: 2.2 mm, height: 80.8 mm, color: white

PTRV 8 /WHRD - Marshalling panel

3270133

<https://www.phoenixcontact.com/in/products/3270133>

D-PTRV 8 WH 17-24 LGS - End cover

3270214

<https://www.phoenixcontact.com/in/products/3270214>



End cover, length: 100 mm, width: 2.2 mm, height: 80.8 mm, color: white

D-PTRV 8 WH 25-32 - End cover

3270215

<https://www.phoenixcontact.com/in/products/3270215>



End cover, length: 100 mm, width: 2.2 mm, height: 80.8 mm, color: white

PTRV 8 /WHRD - Marshalling panel

3270133

<https://www.phoenixcontact.com/in/products/3270133>

D-PTRV 8 WH 25-32 LGS - End cover

3270216

<https://www.phoenixcontact.com/in/products/3270216>



End cover, length: 100 mm, width: 2.2 mm, height: 80.8 mm, color: white

D-PTRV 8 WH A-H - End cover

3270156

<https://www.phoenixcontact.com/in/products/3270156>



End cover, length: 100 mm, width: 2.2 mm, height: 80.8 mm, color: white

PTRV 8 /WHRD - Marshalling panel

3270133

<https://www.phoenixcontact.com/in/products/3270133>

D-PTRV 8 WH A-H LGS - End cover

3270241

<https://www.phoenixcontact.com/in/products/3270241>



End cover, length: 100 mm, width: 2.2 mm, height: 80.8 mm, color: white

D-PTRV 8 WH H-A - End cover

3270243

<https://www.phoenixcontact.com/in/products/3270243>



End cover, length: 100 mm, width: 2.2 mm, height: 80.8 mm, color: white

PTRV 8 /WHRD - Marshalling panel

3270133

<https://www.phoenixcontact.com/in/products/3270133>

D-PTRV 8 WH H-A LGS - End cover

3270245

<https://www.phoenixcontact.com/in/products/3270245>



End cover, length: 100 mm, width: 2.2 mm, height: 80.8 mm, color: white

NS 35/ 7,5 PERF 2000MM - DIN rail perforated

0801733

<https://www.phoenixcontact.com/in/products/0801733>



DIN rail perforated, acc. to EN 60715, material: Steel, galvanized, passivated with a thick layer, Standard profile, color: silver, Pack of 25 (50 m)

PTRV 8 /WHRD - Marshalling panel

3270133

<https://www.phoenixcontact.com/in/products/3270133>



NS 35/ 7,5 UNPERF 2000MM - DIN rail, unperforated

0801681

<https://www.phoenixcontact.com/in/products/0801681>



DIN rail, unperforated, acc. to EN 60715, material: Steel, galvanized, passivated with a thick layer, Standard profile, color: silver, Pack of 25 (50 m)

NS 35/ 7,5 WH PERF 2000MM - DIN rail perforated

1204119

<https://www.phoenixcontact.com/in/products/1204119>



DIN rail perforated, acc. to EN 60715, material: Steel, Galvanized, white passivated, Standard profile, color: silver, Pack of 25 (50 m)

PTRV 8 /WHRD - Marshalling panel

3270133

<https://www.phoenixcontact.com/in/products/3270133>



NS 35/ 7,5 WH UNPERF 2000MM-VPE 10 - DIN rail, unperforated

1204122

<https://www.phoenixcontact.com/in/products/1204122>



DIN rail, unperforated, acc. to EN 60715, material: Steel, Galvanized, white passivated, Standard profile, color: silver, Pack of 10 (20 m)

NS 35/ 7,5 AL UNPERF 2000MM - DIN rail, unperforated

0801704

<https://www.phoenixcontact.com/in/products/0801704>



DIN rail, unperforated, acc. to EN 60715, material: Aluminum, uncoated, Standard profile, color: silver, Pack of 25 (50 m)

PTRV 8 /WHRD - Marshalling panel

3270133

<https://www.phoenixcontact.com/in/products/3270133>



NS 35/ 7,5 ZN PERF 2000MM - DIN rail perforated

1206421

<https://www.phoenixcontact.com/in/products/1206421>



DIN rail perforated, acc. to EN 60715, material: Steel, galvanized, Standard profile, color: silver, Pack of 25 (50 m)

NS 35/ 7,5 ZN UNPERF 2000MM - DIN rail, unperforated

1206434

<https://www.phoenixcontact.com/in/products/1206434>



DIN rail, unperforated, acc. to EN 60715, material: Steel, galvanized, Standard profile, color: silver, Pack of 25 (50 m)

PTRV 8 /WHRD - Marshalling panel

3270133

<https://www.phoenixcontact.com/in/products/3270133>



NS 35/ 7,5 CU UNPERF 2000MM-VPE 10 - DIN rail, unperforated

0801762

<https://www.phoenixcontact.com/in/products/0801762>



DIN rail, unperforated, acc. to EN 60715, material: Copper, uncoated, Standard profile, color: copper-colored, Pack of 10 (20 m)

NS 35/ 7,5 CAP - End cap

1206560

<https://www.phoenixcontact.com/in/products/1206560>

DIN rail end piece, for DIN rail NS 35/7.5



PTRV 8 /WHRD - Marshalling panel

3270133

<https://www.phoenixcontact.com/in/products/3270133>

CLIPFIX 35 - End clamp

3022218

<https://www.phoenixcontact.com/in/products/3022218>



Quick mounting end clamp for NS 35/7,5 DIN rail or NS 35/15 DIN rail, with marking option, width: 9.5 mm, color: gray

CLIPFIX 35-5 - End clamp

3022276

<https://www.phoenixcontact.com/in/products/3022276>



Quick mounting end clamp for NS 35/7,5 DIN rail or NS 35/15 DIN rail, with marking option, with parking option for FBS...5, FBS...6, KSS 5, KSS 6, width: 5.15 mm, color: gray

PTRV 8 /WHRD - Marshalling panel

3270133

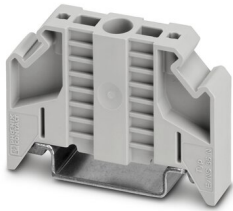
<https://www.phoenixcontact.com/in/products/3270133>

E/NS 35 N - End clamp

0800886

<https://www.phoenixcontact.com/in/products/0800886>

End clamp, width: 9.5 mm, color: gray



E/UK - End clamp

1201442

<https://www.phoenixcontact.com/in/products/1201442>

End clamp, material: PA, color: gray, Mounting on a DIN rail NS 32 or NS 35



PTRV 8 /WHRD - Marshalling panel

3270133

<https://www.phoenixcontact.com/in/products/3270133>



E/UK 1 - End clamp

1201413

<https://www.phoenixcontact.com/in/products/1201413>



End clamps, for supporting the ends of double-level and three-level terminal blocks, width: 10 mm, color: gray

MPS-MT - Test plugs

0201744

<https://www.phoenixcontact.com/in/products/0201744>



Test plugs, with solder connection up to 1 mm² conductor cross section, number of positions: 1, color: gray

PTRV 8 /WHRD - Marshalling panel

3270133

<https://www.phoenixcontact.com/in/products/3270133>



MPS-IH WH - Insulating sleeve

0201663

<https://www.phoenixcontact.com/in/products/0201663>

Insulating sleeve, color: white



MPS-IH RD - Insulating sleeve

0201676

<https://www.phoenixcontact.com/in/products/0201676>

Insulating sleeve, color: red



PTRV 8 /WHRD - Marshalling panel

3270133

<https://www.phoenixcontact.com/in/products/3270133>

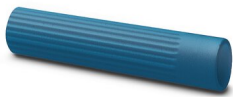


MPS-IH BU - Insulating sleeve

0201689

<https://www.phoenixcontact.com/in/products/0201689>

Insulating sleeve, color: blue



MPS-IH YE - Insulating sleeve

0201692

<https://www.phoenixcontact.com/in/products/0201692>

Insulating sleeve, color: yellow



PTRV 8 /WHRD - Marshalling panel

3270133

<https://www.phoenixcontact.com/in/products/3270133>



MPS-IH GN - Insulating sleeve

0201702

<https://www.phoenixcontact.com/in/products/0201702>

Insulating sleeve, color: green



MPS-IH GY - Insulating sleeve

0201728

<https://www.phoenixcontact.com/in/products/0201728>

Insulating sleeve, color: gray



PTRV 8 /WHRD - Marshalling panel

3270133

<https://www.phoenixcontact.com/in/products/3270133>



MPS-IH BK - Insulating sleeve

0201731

<https://www.phoenixcontact.com/in/products/0201731>

Insulating sleeve, color: black



Phoenix Contact 2023 © - all rights reserved

<https://www.phoenixcontact.com>

PHOENIX CONTACT (I) Pvt. Ltd.

A-58/2, Okhla Industrial Area, Phase - II, New Delhi-110 020

+91.1275.71420

info@phoenixcontact.co.in