

# TB 10 EI BU - Feed-through terminal block



3246748

<https://www.phoenixcontact.com/in/products/3246748>

Please be informed that the data shown in this PDF document is generated from our Online Catalog. Please find the complete data in the user documentation. Our General Terms of Use for Downloads are valid.



Feed-through terminal block, nom. voltage: 1000 V, nominal current: 57 A, number of connections: 2, connection method: Screw connection, Rated cross section: 10 mm<sup>2</sup>, cross section: 1.5 mm<sup>2</sup> - 16 mm<sup>2</sup>, mounting type: NS 35/7,5, NS 35/15, NS 32, color: blue

## Commercial Data

|                                      |               |
|--------------------------------------|---------------|
| Item number                          | 3246748       |
| Packing unit                         | 50 pc         |
| Minimum order quantity               | 50 pc         |
| Sales Key                            | BE1           |
| Product Key                          | BE1411        |
| GTIN                                 | 4046356605649 |
| Weight per Piece (including packing) | 15.413 g      |
| Weight per Piece (excluding packing) | 15.413 g      |
| Customs tariff number                | 85369010      |
| Country of origin                    | IN            |

# TB 10 EI BU - Feed-through terminal block



3246748

<https://www.phoenixcontact.com/in/products/3246748>

## Technical Data

### Product properties

|                       |                             |
|-----------------------|-----------------------------|
| Product type          | Feed-through terminal block |
| Number of connections | 2                           |
| Number of rows        | 1                           |
| Potentials            | 1                           |

### Insulation characteristics

|                      |     |
|----------------------|-----|
| Overvoltage category | III |
| Degree of pollution  | 3   |

### Electrical properties

|   |        |
|---|--------|
| Rated surge voltage                             | 8 kV   |
| Maximum power dissipation for nominal condition | 2.43 W |

### Connection data

|                                 |                    |
|---------------------------------|--------------------|
| Number of connections per level | 2                  |
| Nominal cross section           | 10 mm <sup>2</sup> |

### Level 1 above 1 below 1

|   |   |
|---|---|
| Screw thread  | M4  |
| Tightening torque   | 1.2 Nm  |
| Stripping length  | 10 mm   |
| Connection in acc. with standard  | IEC 60947-7-1                                   |
| Conductor cross section rigid   | 1.5 mm <sup>2</sup> ... 16 mm <sup>2</sup>      |
| Cross section AWG   | 16 ... 6 (converted acc. to IEC)                |
| Conductor cross section flexible  | 1.5 mm <sup>2</sup> ... 10 mm <sup>2</sup>      |
| Conductor cross section, flexible [AWG]   | 16 ... 8 (converted acc. to IEC)                |
| Conductor cross-section flexible (ferrule without plastic sleeve)                   | 1.5 mm <sup>2</sup> ... 10 mm <sup>2</sup>      |
| Flexible conductor cross section (ferrule with plastic sleeve)                      | 1.5 mm <sup>2</sup> ... 6 mm <sup>2</sup>       |
| 2 conductors with same cross section, solid   | 1.5 mm <sup>2</sup> ... 4 mm <sup>2</sup>       |
| 2 conductors with the same cross-section AWG rigid                                  | 16 ... 12 (converted acc. to IEC)               |
| 2 conductors with same cross section, flexible                                      | 1.5 mm <sup>2</sup> ... 4 mm <sup>2</sup>       |
| 2 conductors with the same cross-section AWG flexible                               | 16 ... 12 (converted acc. to IEC)               |
| 2 conductors with same cross section, flexible, with ferrule without plastic sleeve | 1.5 mm <sup>2</sup> ... 2.5 mm <sup>2</sup>     |
| Nominal current   | 57 A  |
| Maximum load current  | 57 A  |
| Nominal voltage   | 1000 V (in the case of enclosed clamping space) |
| Nominal cross section   | 10 mm <sup>2</sup>                              |

### Dimensions

|                 |         |
|-----------------|---------|
| Width           | 10.2 mm |
| End cover width | 1.8 mm  |

# TB 10 EI BU - Feed-through terminal block



3246748

<https://www.phoenixcontact.com/in/products/3246748>

|                  |         |
|------------------|---------|
| Height NS 35/15  | 54.5 mm |
| Height NS 35/7,5 | 47 mm   |
| Height           | 1.85 "  |
| Height NS 32     | 52.8 mm |
| Length           | 42.8 mm |

## Material specifications

|   |        |
|---|--------|
| Color   | blue   |
| Flammability rating according to UL 94                                  | V2     |
| Insulating material group   | I      |
| Insulating material   | PA     |
| Static insulating material application in cold                          | -40 °C |
| Temperature index of insulation material (DIN EN 60216-1 (VDE 0304-21)) | 125 °C |
| Relative insulation material temperature index (Elec., UL 746 B)        | 125 °C |

## Electrical tests

### Surge voltage test

|                       |             |
|-----------------------|-------------|
| Test voltage setpoint | 9.8 kV      |
| Result                | Test passed |

### Temperature-rise test

|   |                                     |
|---|-------------------------------------|
| Requirement temperature-rise test               | Increase in temperature $\leq 45$ K |
| Result  | Test passed                         |
| Short-time withstand current 10 mm <sup>2</sup> | 1.2 kA                              |
| Result  | Test passed                         |

### Power-frequency withstand voltage

|                       |             |
|-----------------------|-------------|
| Test voltage setpoint | 2.2 kV      |
| Result                | Test passed |

## Mechanical properties

### Mechanical data

|                 |     |
|-----------------|-----|
| Open side panel | Yes |
|-----------------|-----|

## Mechanical tests

### Mechanical strength

|        |             |
|--------|-------------|
| Result | Test passed |
|--------|-------------|

### Attachment on the carrier

|        |             |
|--------|-------------|
| Result | Test passed |
|--------|-------------|

### Test for conductor damage and slackening

|                |        |
|----------------|--------|
| Rotation speed | 10 rpm |
| Revolutions    | 135    |

# TB 10 EI BU - Feed-through terminal block



3246748

<https://www.phoenixcontact.com/in/products/3246748>

|                                |                              |
|--------------------------------|------------------------------|
| Conductor cross section/weight | 1.5 mm <sup>2</sup> / 0.4 kg |
|                                | 10 mm <sup>2</sup> / 2 kg    |
|                                | 16 mm <sup>2</sup> / 2.9 kg  |
| Result                         | Test passed                  |

## Environmental and real-life conditions

### Needle-flame test

|                  |             |
|------------------|-------------|
| Time of exposure | 30 s        |
| Result           | Test passed |

### Oscillation/broadband noise

|                        |  |
|------------------------|--|
| Specification          | DIN EN 50155 (VDE 0115-200):2018-05            |
| Spectrum               | Service life test category 2, bogie-mounted    |
| Frequency              | $f_1 = 5 \text{ Hz}$ to $f_2 = 250 \text{ Hz}$ |
| ASD level              | 6.12 (m/s <sup>2</sup> ) <sup>2</sup> /Hz      |
| Acceleration           | 3.12g  |
| Test duration per axis | 5 h  |
| Test directions        | X-, Y- and Z-axis                              |
| Result                 | Test passed                                    |

### Shocks

|                                |                                   |
|--------------------------------|-----------------------------------|
| Pulse shape                    | Half-sine                         |
| Acceleration                   | 30g                               |
| Shock duration                 | 18 ms                             |
| Number of shocks per direction | 3                                 |
| Test directions                | X-, Y- and Z-axis (pos. and neg.) |
| Result                         | Test passed                       |

### Ambient conditions

|  |   |
|--|---|
| Ambient temperature (operation)          | -60 °C ... 105 °C (max. short-term operating temperature RTI Elec.)       |
| Ambient temperature (storage/transport)  | -25 °C ... 60 °C (for a short time, not exceeding 24 h, -60 °C to +70 °C) |
| Ambient temperature (assembly)           | -5 °C ... 70 °C   |
| Ambient temperature (actuation)          | -5 °C ... 70 °C   |
| Permissible humidity (storage/transport) | 30 % ... 70 %   |

## Standards and regulations

|                                  |               |
|----------------------------------|---------------|
| Connection in acc. with standard | IEC 60947-7-1 |
|----------------------------------|---------------|

## Mounting

|               |           |
|---------------|-----------|
| Mounting type | NS 35/7,5 |
|               | NS 35/15  |
|               | NS 32     |

# TB 10 EI BU - Feed-through terminal block

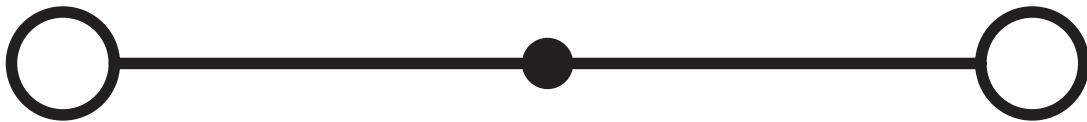
3246748

<https://www.phoenixcontact.com/in/products/3246748>



## Drawings

### Circuit diagram




# TB 10 EI BU - Feed-through terminal block



3246748

<https://www.phoenixcontact.com/in/products/3246748>

## Approvals

|  <b>UL Recognized</b><br>Approval ID: E60425 |  | Nominal Voltage $U_N$ | Nominal Current $I_N$ | Cross Section AWG | Cross Section $\text{mm}^2$ |
|---|--|-----------------------|-----------------------|-------------------|-----------------------------|
| Use group B   |  | 600 V                 | 50 A                  | 16 - 6            | -                           |
| Use group C   |  | 600 V                 | 50 A                  | 16 - 6            | -                           |
| Use group F   |  | 600 V                 | 50 A                  | 16 - 6            | -                           |
| Use group D   |  | 600 V                 | 5 A                   | 16 - 6            | -                           |

# TB 10 EI BU - Feed-through terminal block



3246748

<https://www.phoenixcontact.com/in/products/3246748>

## Classifications

### ECLASS

ECLASS-11.0

27141120

### ETIM

ETIM 7.0

EC000897

### UNSPSC

UNSPSC 21.0

39121410

# TB 10 EI BU - Feed-through terminal block



3246748

<https://www.phoenixcontact.com/in/products/3246748>

## Environmental Product Compliance

|            |   |
|------------|---|
| China RoHS | Environmentally friendly use period: unlimited = EFUP-e |
|            | No hazardous substances above threshold values          |



# TB 10 EI BU - Feed-through terminal block



3246748

<https://www.phoenixcontact.com/in/products/3246748>

## Accessories

### INB 10-10 - Insertion bridge

3246201

<https://www.phoenixcontact.com/in/products/3246201>

Insertion bridge, pitch: 10 mm, number of positions: 10, color: gray



---

### D-TB 4/10 E - End cover

3246104

<https://www.phoenixcontact.com/in/products/3246104>

End cover, length: 42.5 mm, width: 1.5 mm, height: 35.9 mm, color: dark gray



# TB 10 EI BU - Feed-through terminal block

3246748

<https://www.phoenixcontact.com/in/products/3246748>



## TS-TB - Separating plate

3062838

<https://www.phoenixcontact.com/in/products/3062838>



Separating plate, for electrical isolation of neighboring bridges in the terminal center, length: 22 mm, height: 22 mm, color: dark gray

---

## ATP-TB - Partition plate

3046272

<https://www.phoenixcontact.com/in/products/3046272>



Partition plate, length: 56 mm, width: 3 mm, height: 45.7 mm, color: dark gray

# TB 10 EI BU - Feed-through terminal block

3246748

<https://www.phoenixcontact.com/in/products/3246748>



## TPS 4/7/6 - Female test connector

3246243

<https://www.phoenixcontact.com/in/products/3246243>



Female test connector, for 4 mm test plugs, for screwing into the bridge shaft, number of positions: 1, color: silver

---

## SZS 1,0X4,0 VDE - Screwdriver

1205066

<https://www.phoenixcontact.com/in/products/1205066>



Screwdriver, slot-headed, VDE insulated, size: 1.0 x 4.0 x 100 mm, 2-component grip, with non-slip grip

# TB 10 EI BU - Feed-through terminal block

3246748

<https://www.phoenixcontact.com/in/products/3246748>

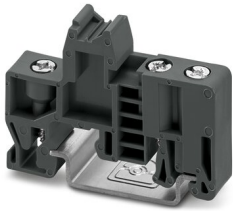


## E/TB - End clamp

3246966

<https://www.phoenixcontact.com/in/products/3246966>

End clamp, for assembly on NS 32 or NS 35/7.5 DIN rail



---

## NS 32 PERF 2000MM-VPE 10 - DIN rail perforated

1201002

<https://www.phoenixcontact.com/in/products/1201002>

DIN rail perforated, acc. to EN 60715, material: Steel, galvanized, passivated with a thick layer, G profile, color: silver, Pack of 10 (20 m)



# TB 10 EI BU - Feed-through terminal block

3246748

<https://www.phoenixcontact.com/in/products/3246748>



## NS 32 UNPERF 2000MM-VPE 10 - DIN rail, unperforated

1201015

<https://www.phoenixcontact.com/in/products/1201015>



DIN rail, unperforated, acc. to EN 60715, material: Steel, galvanized, passivated with a thick layer, G profile, color: silver, Pack of 10 (20 m)

---

## PS-MT - Test plugs

0311647

<https://www.phoenixcontact.com/in/products/0311647>



Test plugs, number of positions: 1, color: silver

# TB 10 EI BU - Feed-through terminal block

3246748

<https://www.phoenixcontact.com/in/products/3246748>



## PS-IH WH - Insulating sleeve

0311566

<https://www.phoenixcontact.com/in/products/0311566>



Insulating sleeve, number of positions: 1, color: white

---

## PS-IH RD - Insulating sleeve

0311579

<https://www.phoenixcontact.com/in/products/0311579>



Insulating sleeve, number of positions: 1, color: red

# TB 10 EI BU - Feed-through terminal block

3246748

<https://www.phoenixcontact.com/in/products/3246748>



## PS-IH BU - Insulating sleeve

0311582

<https://www.phoenixcontact.com/in/products/0311582>



Insulating sleeve, number of positions: 1, color: blue

---

## PS-IH YE - Insulating sleeve

0311595

<https://www.phoenixcontact.com/in/products/0311595>



Insulating sleeve, number of positions: 1, color: yellow

# TB 10 EI BU - Feed-through terminal block

3246748

<https://www.phoenixcontact.com/in/products/3246748>



## PS-IH GN - Insulating sleeve

0311605

<https://www.phoenixcontact.com/in/products/0311605>



Insulating sleeve, number of positions: 1, color: green

---

## PS-IH GY - Insulating sleeve

0311621

<https://www.phoenixcontact.com/in/products/0311621>



Insulating sleeve, number of positions: 1, color: gray



# TB 10 EI BU - Feed-through terminal block

3246748

<https://www.phoenixcontact.com/in/products/3246748>



## PS-IH BK - Insulating sleeve

0311634

<https://www.phoenixcontact.com/in/products/0311634>



Insulating sleeve, number of positions: 1, color: black

---

## PS-IH VT - Insulating sleeve

0311618

<https://www.phoenixcontact.com/in/products/0311618>



Insulating sleeve, number of positions: 1, color: violet

---

Phoenix Contact 2023 © - all rights reserved  
<https://www.phoenixcontact.com>

PHOENIX CONTACT (I) Pvt. Ltd.  
A-58/2, Okhla Industrial Area, Phase - II, New Delhi-110 020

+91.1275.71420  
[info@phoenixcontact.co.in](mailto:info@phoenixcontact.co.in)