

PT 6-TG - Disconnect terminal block



3212163

<https://www.phoenixcontact.com/in/products/3212163>

Please be informed that the data shown in this PDF document is generated from our Online Catalog. Please find the complete data in the user documentation. Our General Terms of Use for Downloads are valid.



Disconnect terminal block, Current and voltage are determined by the plug used., nom. voltage: 500 V, nominal current: 20 A, connection method: Push-in connection, Rated cross section: 6 mm², cross section: 0.5 mm² - 10 mm², mounting: NS 35/7,5, NS 35/15, color: gray

Your advantages

- In addition to the testing facility in the double function shaft, all terminal blocks provide an additional test connection
- The compact design and front connection enable wiring in a confined space
- The Push-in connection terminal blocks are characterized by the system features of the CLIPLINE complete system and by easy and tool-free wiring of conductors with ferrules or solid conductors

Commercial Data

Item number	3212163
Packing unit	50 pc
Minimum order quantity	50 pc
Sales Key	BE2
Product Key	BE2232
Catalog Page	Page 113 (C-1-2019)
GTIN	4055626394305
Weight per Piece (including packing)	19.354 g
Weight per Piece (excluding packing)	17.7 g
Customs tariff number	85369010
Country of origin	CN

PT 6-TG - Disconnect terminal block



3212163

<https://www.phoenixcontact.com/in/products/3212163>

Technical Data

Notes

General	Current and voltage are determined by the plug used.
---------	--

Product properties

Product type	Disconnect terminal block
Number of connections	2
Number of rows	1
Potentials	1

Insulation characteristics

Overvoltage category	III
Degree of pollution	3

Electrical properties

Rated surge voltage	6 kV
Maximum power dissipation for nominal condition	1.31 W

Connection data

Number of connections per level	2
Nominal cross section	6 mm ²
Stripping length	10 mm ... 12 mm
Internal cylindrical gage	A5
Connection in acc. with standard	IEC 60947-7-1
Conductor cross section rigid	0.5 mm ² ... 10 mm ²
Cross section AWG	20 ... 8 (converted acc. to IEC)
Conductor cross section flexible	0.5 mm ² ... 10 mm ²
Conductor cross section, flexible [AWG]	20 ... 8 (converted acc. to IEC)
Conductor cross-section flexible (ferrule without plastic sleeve)	0.5 mm ² ... 6 mm ²
Flexible conductor cross section (ferrule with plastic sleeve)	0.5 mm ² ... 6 mm ²
2 conductors with the same cross section, flexible, with TWIN ferrule with plastic sleeve	0.5 mm ² ... 2.5 mm ² When using TWIN ferrules, we recommend a minimum ferrule length of 13 mm.
Nominal current	20 A
Maximum load current	20 A (with 10 mm ² conductor cross section, rigid)
Nominal voltage	500 V
Nominal cross section	6 mm ²

Connection cross sections directly pluggable

Conductor cross section rigid	1 mm ² ... 10 mm ²
Conductor cross-section flexible (ferrule without plastic sleeve)	1 mm ² ... 6 mm ²
Flexible conductor cross section (ferrule with plastic sleeve)	1 mm ² ... 6 mm ²

Dimensions

Width	8.2 mm
-------	--------

PT 6-TG - Disconnect terminal block



3212163

<https://www.phoenixcontact.com/in/products/3212163>

Height	42.2 mm
Height NS 35/15	52.8 mm
Height NS 35/7,5	45.3 mm
Length	74.1 mm

Material specifications

Color	gray
Flammability rating according to UL 94	V0
Insulating material group	I
Insulating material	PA
Static insulating material application in cold	-60 °C
Temperature index of insulation material (DIN EN 60216-1 (VDE 0304-21))	130 °C
Relative insulation material temperature index (Elec., UL 746 B)	130 °C
Fire protection for rail vehicles (DIN EN 45545-2) R22	HL 1 - HL 3
Fire protection for rail vehicles (DIN EN 45545-2) R23	HL 1 - HL 3
Fire protection for rail vehicles (DIN EN 45545-2) R24	HL 1 - HL 3
Fire protection for rail vehicles (DIN EN 45545-2) R26	HL 1 - HL 3
Calorimetric heat release NFPA 130 (ASTM E 1354)	28 MJ/kg
Surface flammability NFPA 130 (ASTM E 162)	passed
Specific optical density of smoke NFPA 130 (ASTM E 662)	passed
Smoke gas toxicity NFPA 130 (SMP 800C)	passed

Electrical tests

Surge voltage test

Test voltage setpoint	7.3 kV
Result	Test passed

Temperature-rise test

Requirement temperature-rise test	Increase in temperature \leq 45 K
Result	Test passed
Short-time withstand current 2.5 mm ²	0.3 kA
Result	Test passed

Power-frequency withstand voltage

Test voltage setpoint	1.89 kV
Result	Test passed

Mechanical properties

Mechanical data

Open side panel	No
-----------------	----

Mechanical tests

Mechanical strength

PT 6-TG - Disconnect terminal block



3212163

<https://www.phoenixcontact.com/in/products/3212163>

Result	Test passed
--------	-------------

Attachment on the carrier

DIN rail/fixing support	NS 35
Test force setpoint	5 N
Result	Test passed

Test for conductor damage and slackening

Rotation speed	10 rpm
Revolutions	135
Conductor cross section/weight	0.5 mm ² / 0.3 kg
	6 mm ² / 1.4 kg
	10 mm ² / 2 kg
Result	Test passed

Environmental and real-life conditions

Aging

Temperature cycles	192
Result	Test passed

Needle-flame test

Time of exposure	30 s
Result	Test passed

Oscillation/broadband noise

Specification	DIN EN 50155 (VDE 0115-200):2008-03
Spectrum	Service life test category 1, class B, body mounted
Frequency	$f_1 = 5 \text{ Hz}$ to $f_2 = 150 \text{ Hz}$
ASD level	0.964 (m/s ²)/Hz
Acceleration	0.58g
Test duration per axis	5 h
Test directions	X-, Y- and Z-axis
Result	Test passed

Shocks

Specification	DIN EN 50155 (VDE 0115-200):2008-03
Pulse shape	Half-sine
Acceleration	5g
Shock duration	30 ms
Number of shocks per direction	3
Test directions	X-, Y- and Z-axis (pos. and neg.)
Result	Test passed

Ambient conditions

Ambient temperature (operation)	-60 °C ... 105 °C (max. short-term operating temperature RTI Elec.)
---------------------------------	---

PT 6-TG - Disconnect terminal block



3212163

<https://www.phoenixcontact.com/in/products/3212163>

Ambient temperature (storage/transport)	-25 °C ... 60 °C (for a short time, not exceeding 24 h, -60 °C to +70 °C)
Ambient temperature (assembly)	-5 °C ... 70 °C
Ambient temperature (actuation)	-5 °C ... 70 °C
Permissible humidity (storage/transport)	30 % ... 70 %

Standards and regulations

Connection in acc. with standard	IEC 60947-7-1
----------------------------------	---------------

Mounting

Mounting type	NS 35/7,5
	NS 35/15

PT 6-TG - Disconnect terminal block

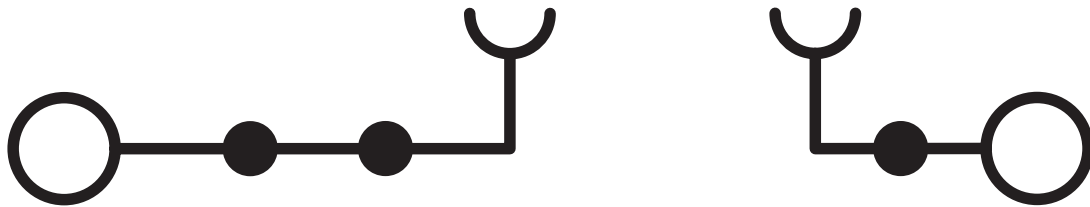


3212163

<https://www.phoenixcontact.com/in/products/3212163>

Drawings

Circuit diagram




PT 6-TG - Disconnect terminal block





3212163

<https://www.phoenixcontact.com/in/products/3212163>

Approvals

 CSA Approval ID: 13631				
	Nominal Voltage U_N	Nominal Current I_N	Cross Section AWG	Cross Section mm^2
Use group B	300 V	20 A	20 - 8	-
Use group C	300 V	20 A	20 - 8	-
Use group D	600 V	5 A	20 - 8	-

 EAC Approval ID: RU C-DE.BL08.B.00644				
---	--	--	--	--

 cULus Recognized Approval ID: E60425				
	Nominal Voltage U_N	Nominal Current I_N	Cross Section AWG	Cross Section mm^2
Use group B	300 V	20 A	20 - 8	-
Use group C	300 V	20 A	20 - 8	-
Use group D	600 V	5 A	20 - 8	-

PT 6-TG - Disconnect terminal block



3212163

<https://www.phoenixcontact.com/in/products/3212163>

Classifications

ECLASS

ECLASS-11.0	27141126
ECLASS-12.0	27141126

ETIM

ETIM 8.0	EC000902
----------	----------

UNSPSC

UNSPSC 21.0	39121400
-------------	----------

PT 6-TG - Disconnect terminal block



3212163

<https://www.phoenixcontact.com/in/products/3212163>

Environmental Product Compliance

China RoHS	Environmentally friendly use period: unlimited = EFUP-e
	No hazardous substances above threshold values

PT 6-TG - Disconnect terminal block

3212163

<https://www.phoenixcontact.com/in/products/3212163>

Accessories

 Note: Applying some accessories below might limit this product.


FBS 2-8 - Plug-in bridge

3030284

<https://www.phoenixcontact.com/in/products/3030284>



Plug-in bridge, pitch: 8.2 mm, number of positions: 2, color: red

 Max. current carrying capacity: 20 A

FBS 3-8 - Plug-in bridge

3030297

<https://www.phoenixcontact.com/in/products/3030297>



Plug-in bridge, pitch: 8.2 mm, number of positions: 3, color: red

 Max. current carrying capacity: 20 A

PT 6-TG - Disconnect terminal block

3212163

<https://www.phoenixcontact.com/in/products/3212163>



FBS 4-8 - Plug-in bridge

3030307

<https://www.phoenixcontact.com/in/products/3030307>

Plug-in bridge, pitch: 8.2 mm, number of positions: 4, color: red



 Max. current carrying capacity: 20 A

FBS 5-8 - Plug-in bridge

3030310

<https://www.phoenixcontact.com/in/products/3030310>

Plug-in bridge, pitch: 8.2 mm, number of positions: 5, color: red



 Max. current carrying capacity: 20 A

PT 6-TG - Disconnect terminal block

3212163

<https://www.phoenixcontact.com/in/products/3212163>




FBS 6-8 - Plug-in bridge

3032470

<https://www.phoenixcontact.com/in/products/3032470>

Plug-in bridge, pitch: 8.2 mm, number of positions: 6, color: red



 Max. current carrying capacity: 20 A


FBS 10-8 - Plug-in bridge

3030323

<https://www.phoenixcontact.com/in/products/3030323>

Plug-in bridge, pitch: 8.2 mm, number of positions: 10, color: red



 Max. current carrying capacity: 20 A

PT 6-TG - Disconnect terminal block

3212163

<https://www.phoenixcontact.com/in/products/3212163>




FBS 2-8 CT - Plug-in bridge

3033830

<https://www.phoenixcontact.com/in/products/3033830>



Plug-in bridge, pitch: 8.2 mm, number of positions: 2, color: orange

 Max. current carrying capacity: 20 A


FBS 3-8 CT - Plug-in bridge

3033831

<https://www.phoenixcontact.com/in/products/3033831>



Plug-in bridge, pitch: 8.2 mm, number of positions: 3, color: orange

 Max. current carrying capacity: 20 A

PT 6-TG - Disconnect terminal block

3212163

<https://www.phoenixcontact.com/in/products/3212163>




FBS 4-8 CT - Plug-in bridge

3033832

<https://www.phoenixcontact.com/in/products/3033832>



Plug-in bridge, pitch: 8.2 mm, number of positions: 4, color: orange

 Max. current carrying capacity: 20 A

FBS 10-8 CT - Plug-in bridge

3033833

<https://www.phoenixcontact.com/in/products/3033833>



Plug-in bridge, pitch: 8.2 mm, number of positions: 10, color: orange

 Max. current carrying capacity: 20 A

PT 6-TG - Disconnect terminal block

3212163

<https://www.phoenixcontact.com/in/products/3212163>

FBS 2-8 BU - Plug-in bridge

3032567

<https://www.phoenixcontact.com/in/products/3032567>



Plug-in bridge, pitch: 8.2 mm, number of positions: 2, color: blue

 Max. current carrying capacity: 20 A


FBS 3-8 BU - Plug-in bridge

3032570

<https://www.phoenixcontact.com/in/products/3032570>



Plug-in bridge, pitch: 8.2 mm, number of positions: 3, color: blue

 Max. current carrying capacity: 20 A

PT 6-TG - Disconnect terminal block

3212163

<https://www.phoenixcontact.com/in/products/3212163>


FBS 4-8 BU - Plug-in bridge

3032583

<https://www.phoenixcontact.com/in/products/3032583>



Plug-in bridge, pitch: 8.2 mm, number of positions: 4, color: blue

 Max. current carrying capacity: 20 A


FBS 5-8 BU - Plug-in bridge

3032596

<https://www.phoenixcontact.com/in/products/3032596>



Plug-in bridge, pitch: 8.2 mm, number of positions: 5, color: blue

 Max. current carrying capacity: 20 A

PT 6-TG - Disconnect terminal block

3212163

<https://www.phoenixcontact.com/in/products/3212163>




FBS 6-8 BU - Plug-in bridge

3032677

<https://www.phoenixcontact.com/in/products/3032677>

Plug-in bridge, pitch: 8.2 mm, number of positions: 6, color: blue



 Max. current carrying capacity: 20 A


FBS 10-8 BU - Plug-in bridge

3032606

<https://www.phoenixcontact.com/in/products/3032606>

Plug-in bridge, pitch: 8.2 mm, number of positions: 10, color: blue



 Max. current carrying capacity: 20 A

PT 6-TG - Disconnect terminal block

3212163

<https://www.phoenixcontact.com/in/products/3212163>




FBS 2-8 GY - Plug-in bridge

3032621

<https://www.phoenixcontact.com/in/products/3032621>



Plug-in bridge, pitch: 8.2 mm, number of positions: 2, color: gray

 Max. current carrying capacity: 20 A


FBS 3-8 GY - Plug-in bridge

3032622

<https://www.phoenixcontact.com/in/products/3032622>



Plug-in bridge, pitch: 8.2 mm, number of positions: 3, color: gray

 Max. current carrying capacity: 20 A

PT 6-TG - Disconnect terminal block

3212163

<https://www.phoenixcontact.com/in/products/3212163>


FBS 4-8 GY - Plug-in bridge

3032635

<https://www.phoenixcontact.com/in/products/3032635>



Plug-in bridge, pitch: 8.2 mm, number of positions: 4, color: gray

 Max. current carrying capacity: 20 A


FBS 5-8 GY - Plug-in bridge

3032648

<https://www.phoenixcontact.com/in/products/3032648>



Plug-in bridge, pitch: 8.2 mm, number of positions: 5, color: gray

 Max. current carrying capacity: 20 A

PT 6-TG - Disconnect terminal block

3212163

<https://www.phoenixcontact.com/in/products/3212163>




FBS 6-8 GY - Plug-in bridge

3032664

<https://www.phoenixcontact.com/in/products/3032664>



Plug-in bridge, pitch: 8.2 mm, number of positions: 6, color: gray

 Max. current carrying capacity: 20 A


FBS 10-8 GY - Plug-in bridge

3032651

<https://www.phoenixcontact.com/in/products/3032651>



Plug-in bridge, pitch: 8.2 mm, number of positions: 10, color: gray

 Max. current carrying capacity: 20 A

PT 6-TG - Disconnect terminal block

3212163

<https://www.phoenixcontact.com/in/products/3212163>


FBSR 2-8 - Plug-in bridge

3033808

<https://www.phoenixcontact.com/in/products/3033808>



Plug-in bridge, pitch: 8.2 mm, number of positions: 2, color: red

 Max. current carrying capacity: 20 A


FBSR 3-8 - Plug-in bridge

3001597

<https://www.phoenixcontact.com/in/products/3001597>



Plug-in bridge, pitch: 8.2 mm, number of positions: 3, color: red

 Max. current carrying capacity: 20 A

PT 6-TG - Disconnect terminal block

3212163

<https://www.phoenixcontact.com/in/products/3212163>


FBSR 4-8 - Plug-in bridge

3000585

<https://www.phoenixcontact.com/in/products/3000585>



Plug-in bridge, pitch: 8.2 mm, number of positions: 4, color: red

 Max. current carrying capacity: 20 A


FBSR 5-8 - Plug-in bridge

3033809

<https://www.phoenixcontact.com/in/products/3033809>



Plug-in bridge, pitch: 8.2 mm, number of positions: 5, color: red

 Max. current carrying capacity: 20 A

PT 6-TG - Disconnect terminal block

3212163

<https://www.phoenixcontact.com/in/products/3212163>



FBSR 10-8 - Plug-in bridge

3001599

<https://www.phoenixcontact.com/in/products/3001599>



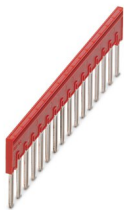
Plug-in bridge, pitch: 8.2 mm, number of positions: 10, color: red

 Max. current carrying capacity: 20 A

FBSR 16-8 - Plug-in bridge

3033816

<https://www.phoenixcontact.com/in/products/3033816>



Plug-in bridge, pitch: 8.2 mm, number of positions: 16, color: red

 Max. current carrying capacity: 20 A

PT 6-TG - Disconnect terminal block

3212163

<https://www.phoenixcontact.com/in/products/3212163>

SB-MER 2-8 - Switching jumper

3000587

<https://www.phoenixcontact.com/in/products/3000587>



Switching jumper, pitch: 8.2 mm, number of positions: 2, length: 25 mm, color: gray/orange

 Max. current carrying capacity: 20 A


SB-MER 3-8 - Switching jumper

3000588

<https://www.phoenixcontact.com/in/products/3000588>



Switching jumper, pitch: 8.2 mm, number of positions: 3, length: 25 mm, color: gray/orange

 Max. current carrying capacity: 20 A

PT 6-TG - Disconnect terminal block

3212163

<https://www.phoenixcontact.com/in/products/3212163>



SB-MER 4-8 - Switching jumper

3000589

<https://www.phoenixcontact.com/in/products/3000589>



Switching jumper, pitch: 8.2 mm, number of positions: 4, length: 25 mm, color: gray/orange

 Max. current carrying capacity: 20 A

ATP-ST 6 - Partition plate

3024481

<https://www.phoenixcontact.com/in/products/3024481>

Partition plate, length: 73.5 mm, width: 2 mm, height: 47.2 mm, color: gray



PT 6-TG - Disconnect terminal block

3212163

<https://www.phoenixcontact.com/in/products/3212163>



SZF 2-0,8X4,0 - Screwdriver

1204520

<https://www.phoenixcontact.com/in/products/1204520>



Actuation tool, for ST terminal blocks, also suitable for use as a bladed screwdriver, size: 0.8 x 4.0 x 100 mm, 2-component grip, with non-slip grip

PT-IL - Mounting material

3208090

<https://www.phoenixcontact.com/in/products/3208090>

Operating decal for the push-in Technology



PT 6-TG - Disconnect terminal block

3212163

<https://www.phoenixcontact.com/in/products/3212163>

WS PT 6 - Warning label

1029029

<https://www.phoenixcontact.com/in/products/1029029>



Warning label, yellow/black, labeled: Lightning flash, mounting type: plug in, for terminal block width: 8.2 mm

P-DI - Isolating plugs

3036783

<https://www.phoenixcontact.com/in/products/3036783>



Isolating plugs, length: 10.8 mm, width: 3.5 mm, height: 23.1 mm, color: orange

PT 6-TG - Disconnect terminal block

3212163

<https://www.phoenixcontact.com/in/products/3212163>

P-DI GY - Isolating plugs

3047390

<https://www.phoenixcontact.com/in/products/3047390>



Isolating plugs, length: 10.8 mm, width: 3.5 mm, height: 23.1 mm, color: gray

P-DI GN - Isolating plugs

1071062

<https://www.phoenixcontact.com/in/products/1071062>



Isolating plugs, length: 10.8 mm, width: 3.5 mm, height: 23.1 mm, color: green

PT 6-TG - Disconnect terminal block

3212163

<https://www.phoenixcontact.com/in/products/3212163>



NS 35/ 7,5 PERF 2000MM - DIN rail perforated

0801733

<https://www.phoenixcontact.com/in/products/0801733>



DIN rail perforated, acc. to EN 60715, material: Steel, galvanized, passivated with a thick layer, Standard profile, color: silver, Pack of 25 (50 m)

NS 35/ 7,5 UNPERF 2000MM - DIN rail, unperforated

0801681

<https://www.phoenixcontact.com/in/products/0801681>



DIN rail, unperforated, acc. to EN 60715, material: Steel, galvanized, passivated with a thick layer, Standard profile, color: silver, Pack of 25 (50 m)

PT 6-TG - Disconnect terminal block

3212163

<https://www.phoenixcontact.com/in/products/3212163>



NS 35/ 7,5 WH PERF 2000MM - DIN rail perforated

1204119

<https://www.phoenixcontact.com/in/products/1204119>



DIN rail perforated, acc. to EN 60715, material: Steel, Galvanized, white passivated, Standard profile, color: silver, Pack of 25 (50 m)

NS 35/ 7,5 WH UNPERF 2000MM-VPE 10 - DIN rail, unperforated

1204122

<https://www.phoenixcontact.com/in/products/1204122>



DIN rail, unperforated, acc. to EN 60715, material: Steel, Galvanized, white passivated, Standard profile, color: silver, Pack of 10 (20 m)

PT 6-TG - Disconnect terminal block

3212163

<https://www.phoenixcontact.com/in/products/3212163>



NS 35/ 7,5 AL UNPERF 2000MM - DIN rail, unperforated

0801704

<https://www.phoenixcontact.com/in/products/0801704>



DIN rail, unperforated, acc. to EN 60715, material: Aluminum, uncoated, Standard profile, color: silver, Pack of 25 (50 m)

NS 35/ 7,5 ZN PERF 2000MM - DIN rail perforated

1206421

<https://www.phoenixcontact.com/in/products/1206421>



DIN rail perforated, acc. to EN 60715, material: Steel, galvanized, Standard profile, color: silver, Pack of 25 (50 m)

PT 6-TG - Disconnect terminal block

3212163

<https://www.phoenixcontact.com/in/products/3212163>



NS 35/ 7,5 ZN UNPERF 2000MM - DIN rail, unperforated

1206434

<https://www.phoenixcontact.com/in/products/1206434>



DIN rail, unperforated, acc. to EN 60715, material: Steel, galvanized, Standard profile, color: silver, Pack of 25 (50 m)

NS 35/ 7,5 CU UNPERF 2000MM-VPE 10 - DIN rail, unperforated

0801762

<https://www.phoenixcontact.com/in/products/0801762>



DIN rail, unperforated, acc. to EN 60715, material: Copper, uncoated, Standard profile, color: copper-colored, Pack of 10 (20 m)

PT 6-TG - Disconnect terminal block

3212163

<https://www.phoenixcontact.com/in/products/3212163>

NS 35/ 7,5 CAP - End cap

1206560

<https://www.phoenixcontact.com/in/products/1206560>

DIN rail end piece, for DIN rail NS 35/7.5



NS 35/15 PERF 2000MM - DIN rail perforated

1201730

<https://www.phoenixcontact.com/in/products/1201730>



DIN rail perforated, similar to EN 60715, material: Steel, galvanized, passivated with a thick layer, Standard profile, color: silver, Pack of 25 (50 m)

PT 6-TG - Disconnect terminal block

3212163

<https://www.phoenixcontact.com/in/products/3212163>



NS 35/15 UNPERF 2000MM - DIN rail, unperforated

1201714

<https://www.phoenixcontact.com/in/products/1201714>



DIN rail, unperforated, similar to EN 60715, material: Steel, galvanized, passivated with a thick layer, Standard profile, color: silver, Pack of 25 (50 m)

NS 35/15 WH PERF 2000MM - DIN rail perforated

0806602

<https://www.phoenixcontact.com/in/products/0806602>



DIN rail perforated, similar to EN 60715, material: Steel, Galvanized, white passivated, Standard profile, color: white, Pack of 25 (50 m)

PT 6-TG - Disconnect terminal block

3212163

<https://www.phoenixcontact.com/in/products/3212163>



NS 35/15 WH UNPERF 2000MM-VPE 10 - DIN rail, unperforated

1204135

<https://www.phoenixcontact.com/in/products/1204135>



DIN rail, unperforated, similar to EN 60715, material: Steel, Galvanized, white passivated, Standard profile, color: silver, Pack of 10 (20 m)

NS 35/15 AL UNPERF 2000MM - DIN rail, unperforated

1201756

<https://www.phoenixcontact.com/in/products/1201756>



DIN rail, unperforated, similar to EN 60715, material: Aluminum, uncoated, Standard profile, color: silver

PT 6-TG - Disconnect terminal block

3212163

<https://www.phoenixcontact.com/in/products/3212163>



NS 35/15 ZN PERF 2000MM - DIN rail perforated

1206599

<https://www.phoenixcontact.com/in/products/1206599>



DIN rail perforated, similar to EN 60715, material: Steel, galvanized, Standard profile, color: silver, Pack of 25 (50 m)

NS 35/15 ZN UNPERF 2000MM - DIN rail, unperforated

1206586

<https://www.phoenixcontact.com/in/products/1206586>



DIN rail, unperforated, similar to EN 60715, material: Steel, galvanized, Standard profile, color: silver, Pack of 25 (50 m)

PT 6-TG - Disconnect terminal block

3212163

<https://www.phoenixcontact.com/in/products/3212163>



NS 35/15 CU UNPERF 2000MM-VPE 10 - DIN rail, unperforated

1201895

<https://www.phoenixcontact.com/in/products/1201895>



DIN rail, unperforated, similar to EN 60715, material: Copper, uncoated, Standard profile, color: copper-colored, Pack of 10 (20 m)

NS 35/15 CAP - End cap

1206573

<https://www.phoenixcontact.com/in/products/1206573>

DIN rail end piece, for DIN rail NS 35/15



PT 6-TG - Disconnect terminal block

3212163

<https://www.phoenixcontact.com/in/products/3212163>



NS 35/15-2,3 UNPERF 2000MM-VPE 10 - DIN rail, unperforated

1201798

<https://www.phoenixcontact.com/in/products/1201798>



DIN rail, unperforated, acc. to EN 60715, material: Steel, galvanized, passivated with a thick layer, Standard profile 2.3 mm, color: silver, Pack of 10 (20 m)

ZBF 8:UNBEDRUCKT - Zack Marker strip, flat

0808781

<https://www.phoenixcontact.com/in/products/0808781>



Zack Marker strip, flat, Strip, white, unlabeled, can be labeled with: PLOTMARK, CMS-P1-PLOTTER, mounting type: snapped, for terminal block width: 8 mm, lettering field size: 5.15 x 8.15 mm, Number of individual labels: 10

PT 6-TG - Disconnect terminal block

3212163

<https://www.phoenixcontact.com/in/products/3212163>



ZBF 8 CUS - Zack Marker strip, flat

0825030

<https://www.phoenixcontact.com/in/products/0825030>



Zack Marker strip, flat, can be ordered: Strip, white, labeled according to customer specifications, mounting type: snap into flat marker groove, for terminal block width: 8 mm, lettering field size: 5.15 x 8.15 mm, Number of individual labels: 10

ZBF 8,LGS:FORTL.ZAHLEN - Zack Marker strip, flat

0808804

<https://www.phoenixcontact.com/in/products/0808804>



Zack Marker strip, flat, Strip, white, labeled, printed horizontally: consecutive numbers 1 ... 10, 11 ... 20, etc. up to 101 ... 110, mounting type: snapped, for terminal block width: 8 mm, lettering field size: 5.15 x 8.15 mm, Number of individual labels: 10

PT 6-TG - Disconnect terminal block



3212163

<https://www.phoenixcontact.com/in/products/3212163>

UC-TMF 8 - Marker for terminal blocks

0818137

<https://www.phoenixcontact.com/in/products/0818137>



Marker for terminal blocks, Sheet, white, unlabeled, can be labeled with: BLUEMARK ID COLOR, BLUEMARK ID, BLUEMARK CLED, PLOTMARK, CMS-P1-PLOTTER, mounting type: snapped, for terminal block width: 8.2 mm, lettering field size: 7.6 x 5.1 mm, Number of individual labels: 56

UC-TMF 8 CUS - Marker for terminal blocks

0824654

<https://www.phoenixcontact.com/in/products/0824654>



Marker for terminal blocks, can be ordered: by sheet, white, labeled according to customer specifications, mounting type: snap into flat marker groove, for terminal block width: 8.2 mm, lettering field size: 7.6 x 5.1 mm, Number of individual labels: 56

PT 6-TG - Disconnect terminal block

3212163

<https://www.phoenixcontact.com/in/products/3212163>

UCT-TMF 8 - Marker for terminal blocks

0828748

<https://www.phoenixcontact.com/in/products/0828748>



Marker for terminal blocks, Sheet, white, unlabeled, can be labeled with: TOPMARK NEO, TOPMARK LASER, BLUEMARK ID COLOR, BLUEMARK ID, BLUEMARK CLED, THERMOMARK PRIME, THERMOMARK CARD 2.0, THERMOMARK CARD, mounting type: snapped, for terminal block width: 8.2 mm, lettering field size: 7.4 x 4.7 mm, Number of individual labels: 42

UCT-TMF 8 CUS - Marker for terminal blocks

0829672

<https://www.phoenixcontact.com/in/products/0829672>



Marker for terminal blocks, can be ordered: by sheet, white, labeled according to customer specifications, mounting type: snap into flat marker groove, for terminal block width: 8.2 mm, lettering field size: 7.4 x 4.7 mm, Number of individual labels: 42

PT 6-TG - Disconnect terminal block

3212163

<https://www.phoenixcontact.com/in/products/3212163>



MPS-MT - Test plugs

0201744

<https://www.phoenixcontact.com/in/products/0201744>



Test plugs, with solder connection up to 1 mm² conductor cross section, number of positions: 1, color: gray

MPS-IH WH - Insulating sleeve

0201663

<https://www.phoenixcontact.com/in/products/0201663>

Insulating sleeve, color: white



PT 6-TG - Disconnect terminal block

3212163

<https://www.phoenixcontact.com/in/products/3212163>



MPS-IH RD - Insulating sleeve

0201676

<https://www.phoenixcontact.com/in/products/0201676>

Insulating sleeve, color: red

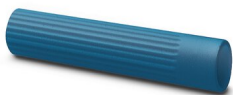


MPS-IH BU - Insulating sleeve

0201689

<https://www.phoenixcontact.com/in/products/0201689>

Insulating sleeve, color: blue



PT 6-TG - Disconnect terminal block

3212163

<https://www.phoenixcontact.com/in/products/3212163>

MPS-IH YE - Insulating sleeve

0201692

<https://www.phoenixcontact.com/in/products/0201692>

Insulating sleeve, color: yellow



MPS-IH GN - Insulating sleeve

0201702

<https://www.phoenixcontact.com/in/products/0201702>

Insulating sleeve, color: green



PT 6-TG - Disconnect terminal block

3212163

<https://www.phoenixcontact.com/in/products/3212163>



MPS-IH GY - Insulating sleeve

0201728

<https://www.phoenixcontact.com/in/products/0201728>

Insulating sleeve, color: gray



MPS-IH BK - Insulating sleeve

0201731

<https://www.phoenixcontact.com/in/products/0201731>

Insulating sleeve, color: black



PT 6-TG - Disconnect terminal block

3212163

<https://www.phoenixcontact.com/in/products/3212163>



PAI-4-FIX BU - Test adapter

3032729

<https://www.phoenixcontact.com/in/products/3032729>



Test adapter, Touch proof against unintentional direct contact according to DIN EN 50274 when plugged in, for 4 mm test plug and terminal blocks with 8.2 mm pitch, number of positions: 1, color: blue

PAI-4-FIX OG - Test adapter

3034455

<https://www.phoenixcontact.com/in/products/3034455>



4 mm test adapter, for terminal blocks with 8.2 mm pitch

PT 6-TG - Disconnect terminal block

3212163

<https://www.phoenixcontact.com/in/products/3212163>

PAI-4-FIX YE - Test adapter

3032745

<https://www.phoenixcontact.com/in/products/3032745>



Test adapter, Touch proof against unintentional direct contact according to DIN EN 50274 when plugged in, for 4 mm test plug and terminal blocks with 8.2 mm pitch, number of positions: 1, color: yellow

PAI-4-FIX RD - Test adapter

3032732

<https://www.phoenixcontact.com/in/products/3032732>



Test adapter, Touch proof against unintentional direct contact according to DIN EN 50274 when plugged in, for 4 mm test plug and terminal blocks with 8.2 mm pitch, number of positions: 1, color: red

PT 6-TG - Disconnect terminal block

3212163

<https://www.phoenixcontact.com/in/products/3212163>



PAI-4-FIX GN - Test adapter

3032758

<https://www.phoenixcontact.com/in/products/3032758>



Test adapter, Touch proof against unintentional direct contact according to DIN EN 50274 when plugged in, for 4 mm test plug and terminal blocks with 8.2 mm pitch, number of positions: 1, color: green

PAI-4-FIX BK - Test adapter

3032774

<https://www.phoenixcontact.com/in/products/3032774>



Test adapter, Touch proof against unintentional direct contact according to DIN EN 50274 when plugged in, for 4 mm test plug and terminal blocks with 8.2 mm pitch, number of positions: 1, color: black

PT 6-TG - Disconnect terminal block

3212163

<https://www.phoenixcontact.com/in/products/3212163>

PAI-4-FIX GY - Test adapter

3032790

<https://www.phoenixcontact.com/in/products/3032790>



Test adapter, Touch proof against unintentional direct contact according to DIN EN 50274 when plugged in, for 4 mm test plug and terminal blocks with 8.2 mm pitch, number of positions: 1, color: gray

PAI-4-FIX VT - Test adapter

3032761

<https://www.phoenixcontact.com/in/products/3032761>



Test adapter, Touch proof against unintentional direct contact according to DIN EN 50274 when plugged in, for 4 mm test plug and terminal blocks with 4.2 mm .. 8.2 mm pitch, number of positions: 1, color: violet

PT 6-TG - Disconnect terminal block

3212163

<https://www.phoenixcontact.com/in/products/3212163>



PAI-4-FIX BN - Test adapter

3032787

<https://www.phoenixcontact.com/in/products/3032787>



Test adapter, Touch proof against unintentional direct contact according to DIN EN 50274 when plugged in, for 4 mm test plug and terminal blocks with 8.2 mm pitch, number of positions: 1, color: brown

PAI-4-FIX WH - Test adapter

3032797

<https://www.phoenixcontact.com/in/products/3032797>



4 mm test adapter, for terminal blocks with 8.2 mm pitch

PT 6-TG - Disconnect terminal block

3212163

<https://www.phoenixcontact.com/in/products/3212163>



PAIS-4-FIX GY - Test adapter

3032791

<https://www.phoenixcontact.com/in/products/3032791>



Test adapter, Touch proof against unintentional direct contact according to DIN EN 50274 when plugged in, for 4 mm test plug and terminal blocks with 5.2 mm, 6.2 mm, and 8.2 mm pitch, number of positions: 1, color: gray

PAIS-4-FIX BK - Test adapter

3032792

<https://www.phoenixcontact.com/in/products/3032792>



Test adapter, Touch proof against unintentional direct contact according to DIN EN 50274 when plugged in, for 4 mm test plug and terminal blocks with 5.2 mm, 6.2 mm, and 8.2 mm pitch, number of positions: 1, color: black

PT 6-TG - Disconnect terminal block



3212163

<https://www.phoenixcontact.com/in/products/3212163>

PAIS-4-FIX RD - Test adapter

3032793

<https://www.phoenixcontact.com/in/products/3032793>



Test adapter, Do not plug in while the power is connected, for 4 mm test plug and terminal blocks with 5.2 mm, 6.2 mm, and 8.2 mm pitch, number of positions: 1, color: red

PAIS-4-FIX BU - Test adapter

3032798

<https://www.phoenixcontact.com/in/products/3032798>



Test adapter, Touch proof against unintentional direct contact according to DIN EN 50274 when plugged in, for 4 mm test plug and terminal blocks with 5.2 mm, 6.2 mm, and 8.2 mm pitch, number of positions: 1, color: blue

PT 6-TG - Disconnect terminal block

3212163

<https://www.phoenixcontact.com/in/products/3212163>

PAIS-4-FIX YE - Test adapter

3032799

<https://www.phoenixcontact.com/in/products/3032799>



Test adapter, Touch proof against unintentional direct contact according to DIN EN 50274 when plugged in, for 4 mm test plug and terminal blocks with 5.2 mm, 6.2 mm, and 8.2 mm pitch, number of positions: 1, color: yellow

PAIS-4-FIX GN - Test adapter

3032801

<https://www.phoenixcontact.com/in/products/3032801>



Test adapter, Touch proof against unintentional direct contact according to DIN EN 50274 when plugged in, for 4 mm test plug and terminal blocks with 5.2 mm, 6.2 mm, and 8.2 mm pitch, number of positions: 1, color: green

PT 6-TG - Disconnect terminal block

3212163

<https://www.phoenixcontact.com/in/products/3212163>



PAIS-4-FIX VT - Test adapter

3032802

<https://www.phoenixcontact.com/in/products/3032802>



Test adapter, Touch proof against unintentional direct contact according to DIN EN 50274 when plugged in, for 4 mm test plug and terminal blocks with 5.2 mm, 6.2 mm, and 8.2 mm pitch, number of positions: 1, color: violet

PS-8 - Test plugs

3031005

<https://www.phoenixcontact.com/in/products/3031005>



Test plugs, Modular test plug, number of positions: 1, color: red

PT 6-TG - Disconnect terminal block



3212163

<https://www.phoenixcontact.com/in/products/3212163>

DP PS-8 - Spacer plate

3036741

<https://www.phoenixcontact.com/in/products/3036741>



Spacer plate, length: 22.4 mm, width: 8.2 mm, height: 29 mm, number of positions: 1, color: red

PS-8/2,3MM RD - Test plugs

3048564

<https://www.phoenixcontact.com/in/products/3048564>



Test plugs, number of positions: 1, color: red

PT 6-TG - Disconnect terminal block

3212163

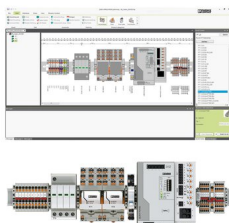
<https://www.phoenixcontact.com/in/products/3212163>



PROJECT COMPLETE - Software

1050453

<https://www.phoenixcontact.com/in/products/1050453>

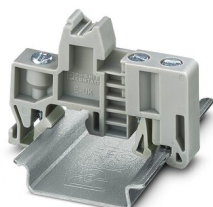


Intuitive planning and marking software for configuring terminal strips and for professional marking of marking materials for terminal blocks, conductors, cables, devices, and systems. The software is available for download

E/UK - End clamp

1201442

<https://www.phoenixcontact.com/in/products/1201442>



End clamp, material: PA, color: gray, Mounting on a DIN rail NS 32 or NS 35

PT 6-TG - Disconnect terminal block

3212163

<https://www.phoenixcontact.com/in/products/3212163>

E/UK 1 - End clamp

1201413

<https://www.phoenixcontact.com/in/products/1201413>



End clamps, for supporting the ends of double-level and three-level terminal blocks, width: 10 mm, color: gray

CLIPFIX 35 - End clamp

3022218

<https://www.phoenixcontact.com/in/products/3022218>



Quick mounting end clamp for NS 35/7,5 DIN rail or NS 35/15 DIN rail, with marking option, width: 9.5 mm, color: gray

PT 6-TG - Disconnect terminal block

3212163

<https://www.phoenixcontact.com/in/products/3212163>

CLIPFIX 35-5 - End clamp

3022276

<https://www.phoenixcontact.com/in/products/3022276>

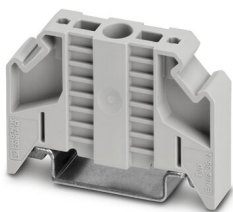


Quick mounting end clamp for NS 35/7,5 DIN rail or NS 35/15 DIN rail, with marking option, with parking option for FBS...5, FBS...6, KSS 5, KSS 6, width: 5.15 mm, color: gray

E/NS 35 N - End clamp

0800886

<https://www.phoenixcontact.com/in/products/0800886>



End clamp, width: 9.5 mm, color: gray

PT 6-TG - Disconnect terminal block

3212163

<https://www.phoenixcontact.com/in/products/3212163>

P-DI - Isolating plugs

3036783

<https://www.phoenixcontact.com/in/products/3036783>

Isolating plugs, length: 10.8 mm, width: 3.5 mm, height: 23.1 mm, color: orange



P-FIX - Feed-through connector

3038956

<https://www.phoenixcontact.com/in/products/3038956>

Feed-through connector, length: 10.5 mm, width: 4 mm, color: gray



PT 6-TG - Disconnect terminal block

3212163

<https://www.phoenixcontact.com/in/products/3212163>

P-CO - Component connector

3036796

<https://www.phoenixcontact.com/in/products/3036796>



Component connector, for installing components that can be individually selected, nominal current: 6 A, pitch: 5.2 mm, length: 24.2 mm, width: 5.1 mm, height: 33.2 mm, number of positions: 1, color: gray

P-CO 1N4007/R-L - Component connector

3032457

<https://www.phoenixcontact.com/in/products/3032457>



Component connector, with diode 1N4007, length: 24.2 mm, width: 5.2 mm, height: 33.3 mm, number of positions: 1, color: gray

PT 6-TG - Disconnect terminal block

3212163

<https://www.phoenixcontact.com/in/products/3212163>



P-CO 1N4007/L-R - Component connector

3032460

<https://www.phoenixcontact.com/in/products/3032460>



Component connector, with diode 1N4007, length: 24.2 mm, width: 5.2 mm, height: 33.3 mm, number of positions: 1, color: gray

P-CO XL-UT - Component connector

3036799

<https://www.phoenixcontact.com/in/products/3036799>



Component connector, for installing components that can be individually selected up to a diameter of 10 mm and power dissipation of up to 1 W, nominal current: 10 A, length: 41.2 mm, width: 12.3 mm, height: 37.5 mm, number of positions: 1, color: gray

PT 6-TG - Disconnect terminal block

3212163

<https://www.phoenixcontact.com/in/products/3212163>

P-FU 5X20 - Fuse plug

3036806

<https://www.phoenixcontact.com/in/products/3036806>



Fuse plug, Prior to replacing the cartridge fuse, disconnect the fuse connector from the basic terminal block., nom. voltage: 500 V, nominal current: 6.3 A, connection method: Plug-in connection, fuse type: G / 5 x 20, mounting type: Plug-in mounting, color: black

P-FU 5X20 LED 24 - Fuse plug

3036819

<https://www.phoenixcontact.com/in/products/3036819>



Fuse plug, Prior to replacing the cartridge fuse, disconnect the fuse connector from the basic terminal block., nom. voltage: 24 V, nominal current: 6.3 A, fuse type: G / 5 x 20, mounting type: Plug-in mounting, color: black

PT 6-TG - Disconnect terminal block

3212163

<https://www.phoenixcontact.com/in/products/3212163>

P-FU 5X20 LED 60 - Fuse plug

3036822

<https://www.phoenixcontact.com/in/products/3036822>



Fuse plug, Prior to replacing the cartridge fuse, disconnect the fuse connector from the basic terminal block., nom. voltage: 500 V, nominal current: 6.3 A, fuse type: G / 5 x 20, mounting type: Plug-in mounting, color: black

P-FU 5X20 LA 250 - Fuse plug

3036835

<https://www.phoenixcontact.com/in/products/3036835>



Fuse plug, Prior to replacing the cartridge fuse, disconnect the fuse connector from the basic terminal block., nom. voltage: 500 V, nominal current: 6.3 A, fuse type: G / 5 x 20, mounting type: Plug-in mounting, color: black

PT 6-TG - Disconnect terminal block

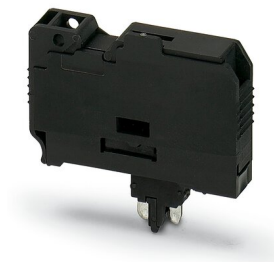
3212163

<https://www.phoenixcontact.com/in/products/3212163>

P-FU 6,3X32 - Fuse plug

3046498

<https://www.phoenixcontact.com/in/products/3046498>

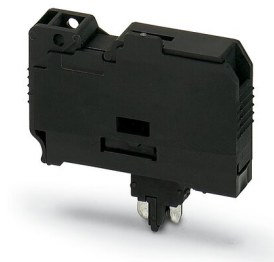


Fuse plug, Prior to replacing the cartridge fuse, disconnect the fuse connector from the basic terminal block., nom. voltage: 630 V, nominal current: 10 A, connection method: Plug-in connection, fuse type: G / 6,3 x 32, mounting type: Plug-in mounting, color: black

P-FU 6,3X32 LED 24 - Fuse plug

3046508

<https://www.phoenixcontact.com/in/products/3046508>



Fuse plug, Prior to replacing the cartridge fuse, disconnect the fuse connector from the basic terminal block., nominal current: 10 A, connection method: Plug-in connection, fuse type: G / 6,3 x 32, mounting type: Plug-in mounting, color: black

PT 6-TG - Disconnect terminal block



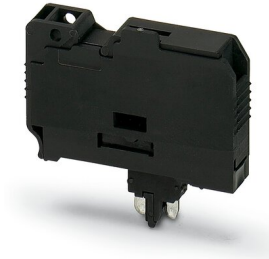
3212163

<https://www.phoenixcontact.com/in/products/3212163>

P-FU 6,3X32 LED 60 - Fuse plug

3046511

<https://www.phoenixcontact.com/in/products/3046511>

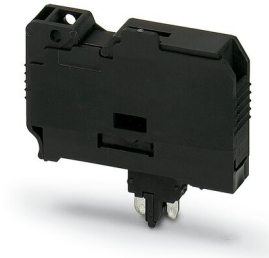


Fuse plug, Prior to replacing the cartridge fuse, disconnect the fuse connector from the basic terminal block., nominal current: 10 A, connection method: Plug-in connection, fuse type: G / 6,3 x 32, mounting type: Plug-in mounting, color: black

P-FU 6,3X32 LA 250 - Fuse plug

3046524

<https://www.phoenixcontact.com/in/products/3046524>



Fuse plug, Prior to replacing the cartridge fuse, disconnect the fuse connector from the basic terminal block., nominal current: 10 A, connection method: Plug-in connection, fuse type: G / 6,3 x 32, mounting type: Plug-in mounting, color: black

Phoenix Contact 2023 © - all rights reserved
<https://www.phoenixcontact.com>

PHOENIX CONTACT (I) Pvt. Ltd.
A-58/2, Okhla Industrial Area, Phase - II, New Delhi-110 020

+91.1275.71420
info@phoenixcontact.co.in