

DT 6/2,5-DREHSILED 24 (5X20) - Fuse modular terminal block



3034251

<https://www.phoenixcontact.com/in/products/3034251>

Please be informed that the data shown in this PDF document is generated from our Online Catalog. Please find the complete data in the user documentation. Our General Terms of Use for Downloads are valid.



Fuse terminal block for cartridge fuse insert, cross section: 0.5-10 mm², AWG: 20-8, width: 12.2 mm, color: Black

Commercial Data

Item number	3034251
Packing unit	25 pc
Minimum order quantity	25 pc
Sales Key	BE2
Product Key	BE2235
Catalog Page	Page 213 (CL-2009)
GTIN	4046356052801
Weight per Piece (including packing)	26.311 g
Weight per Piece (excluding packing)	24.733 g
Customs tariff number	85369095
Country of origin	PL

DT 6/2,5-DREHSILED 24 (5X20) - Fuse modular terminal block



3034251

<https://www.phoenixcontact.com/in/products/3034251>

Technical Data

Product properties

Product type	Fuse terminal block
Number of connections	2
Number of rows	1
Potentials	1

Insulation characteristics

Overvoltage category	III
Degree of pollution	3

Electrical properties

Fuse type	Glass / ceramics / ...
Rated surge voltage	6 kV
Maximum power dissipation for nominal condition	0.77 W
Fuse	G / 5 x 20
LED voltage range	12 V AC/DC ... 30 V AC/DC
LED current range	1 mA ... 2.5 mA

Input data

LED voltage range	12 V AC/DC ... 30 V AC/DC
-------------------	---------------------------

Connection data

Number of connections per level	2
Nominal cross section	2.5 mm ²

Level 1 above 1

Stripping length	12 mm
Internal cylindrical gage	A5
Connection in acc. with standard	IEC 60947-7-3
Conductor cross section rigid	0.5 mm ² ... 10 mm ²
Cross section AWG	20 ... 8 (converted acc. to IEC)
Conductor cross section flexible	0.5 mm ² ... 6 mm ²
Conductor cross section, flexible [AWG]	20 ... 10 (converted acc. to IEC)
Conductor cross-section flexible (ferrule without plastic sleeve)	0.5 mm ² ... 6 mm ²
Flexible conductor cross section (ferrule with plastic sleeve)	0.5 mm ² ... 6 mm ²
2 conductors with the same cross section, flexible, with TWIN ferrule with plastic sleeve	0.5 mm ² ... 1.5 mm ²
Nominal current	10 A
Maximum load current	10 A (with 4 mm ² conductor cross section)
Nominal voltage	500 V
Nominal cross section	1.5 mm ²

DT 6/2,5-DREHSILED 24 (5X20) - Fuse modular terminal block



3034251

<https://www.phoenixcontact.com/in/products/3034251>

Level 1 below 1

Stripping length	10 mm
Internal cylindrical gage	A3
Connection in acc. with standard	IEC 60947-7-1
Conductor cross section rigid	0.2 mm ² ... 4 mm ²
Cross section AWG	24 ... 12 (converted acc. to IEC)
Conductor cross section flexible	0.2 mm ² ... 2.5 mm ²
Conductor cross-section flexible (ferrule without plastic sleeve)	0.25 mm ² ... 2.5 mm ²
Flexible conductor cross section (ferrule with plastic sleeve)	0.25 mm ² ... 2.5 mm ²
2 conductors with the same cross section, flexible, with TWIN ferrule with plastic sleeve	0.5 mm ²
Nominal cross section	1.5 mm ²

Dimensions

Width	12.2 mm
Height NS 35/15	58.8 mm
Height NS 35/7,5	51.3 mm
Length	71.5 mm

Material specifications

Color	black
Flammability rating according to UL 94	V0
Insulating material group	I
Insulating material	PA
Static insulating material application in cold	-60 °C
Temperature index of insulation material (DIN EN 60216-1 (VDE 0304-21))	130 °C
Relative insulation material temperature index (Elec., UL 746 B)	130 °C
Fire protection for rail vehicles (DIN EN 45545-2) R22	HL 1 - HL 3
Fire protection for rail vehicles (DIN EN 45545-2) R23	HL 1 - HL 3
Fire protection for rail vehicles (DIN EN 45545-2) R24	HL 1 - HL 3
Fire protection for rail vehicles (DIN EN 45545-2) R26	HL 1 - HL 3
Calorimetric heat release NFPA 130 (ASTM E 1354)	28 MJ/kg
Surface flammability NFPA 130 (ASTM E 162)	passed
Specific optical density of smoke NFPA 130 (ASTM E 662)	passed
Smoke gas toxicity NFPA 130 (SMP 800C)	passed

Mechanical properties

Mechanical data

Open side panel	No
-----------------	----

Environmental and real-life conditions

DT 6/2,5-DREHSILED 24 (5X20) - Fuse modular terminal block



3034251

<https://www.phoenixcontact.com/in/products/3034251>

Ambient conditions

Ambient temperature (operation)	-60 °C ... 105 °C (max. short-term operating temperature RTI Elec.)
Ambient temperature (storage/transport)	-25 °C ... 60 °C (for a short time, not exceeding 24 h, -60 °C to +70 °C)
Ambient temperature (assembly)	-5 °C ... 70 °C
Ambient temperature (actuation)	-5 °C ... 70 °C
Permissible humidity (storage/transport)	30 % ... 70 %

Standards and regulations

Connection in acc. with standard	IEC 60947-7-3
	IEC 60947-7-1

Mounting

Mounting type	NS 35/7,5
	NS 35/7,5

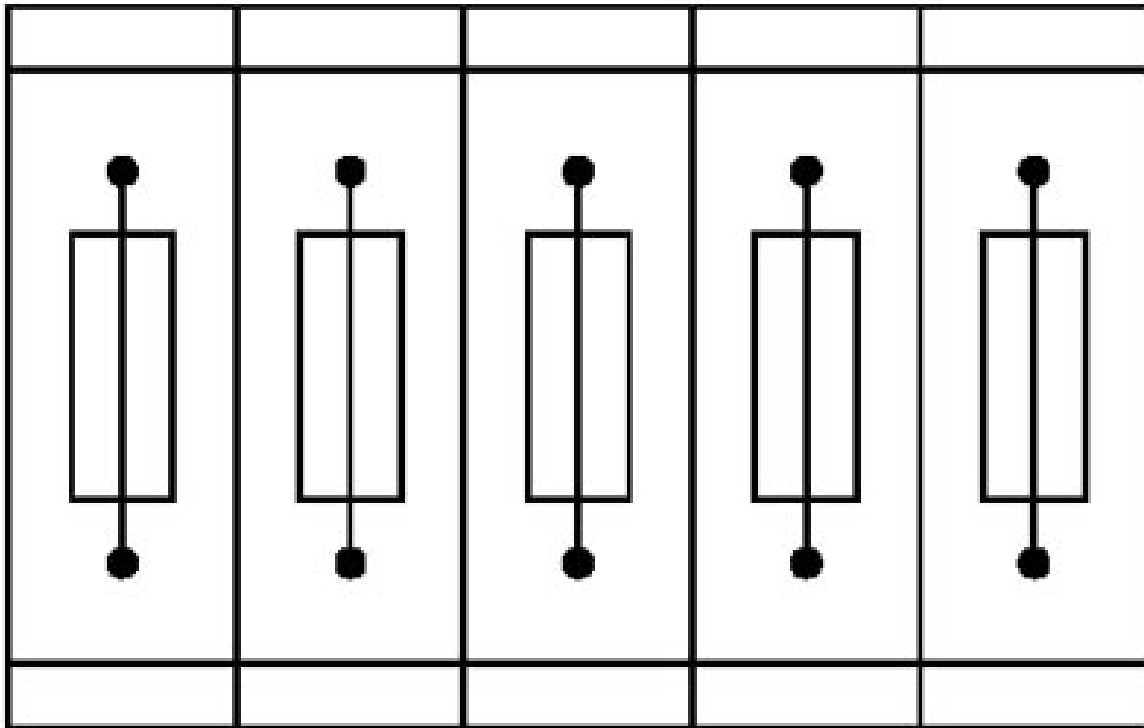
DT 6/2,5-DREHSEILED 24 (5X20) - Fuse modular terminal block

3034251

<https://www.phoenixcontact.com/in/products/3034251>

Drawings

Application drawing



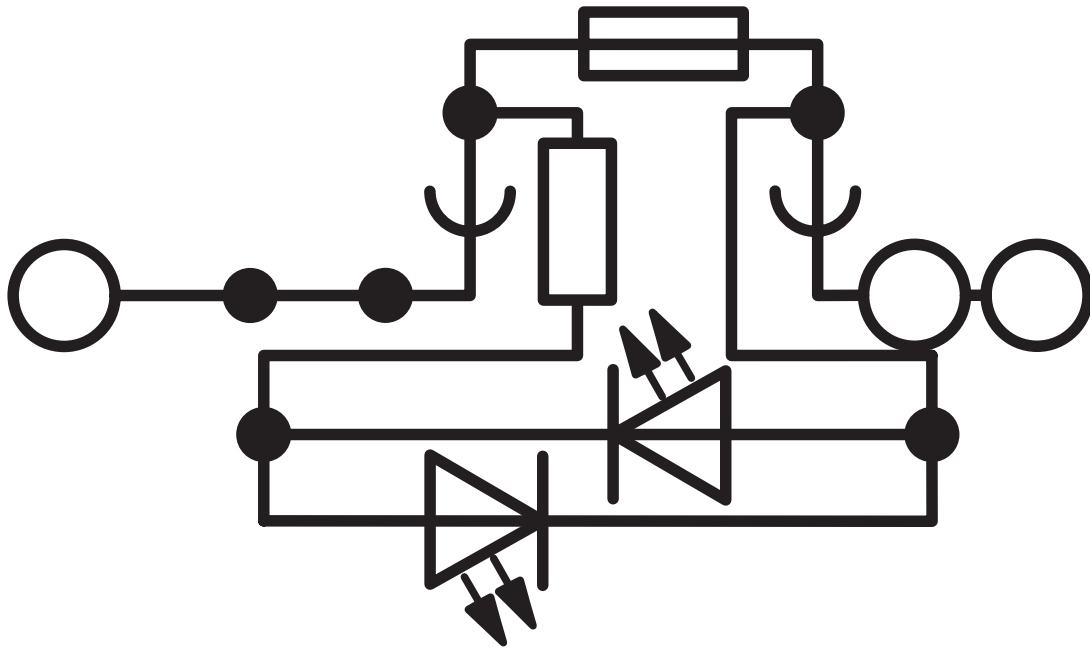
Fuse terminal blocks in interconnected arrangement, block consisting of 5 fuse terminal blocks

DT 6/2,5-DREHSILED 24 (5X20) - Fuse modular terminal block

3034251

<https://www.phoenixcontact.com/in/products/3034251>

Circuit diagram

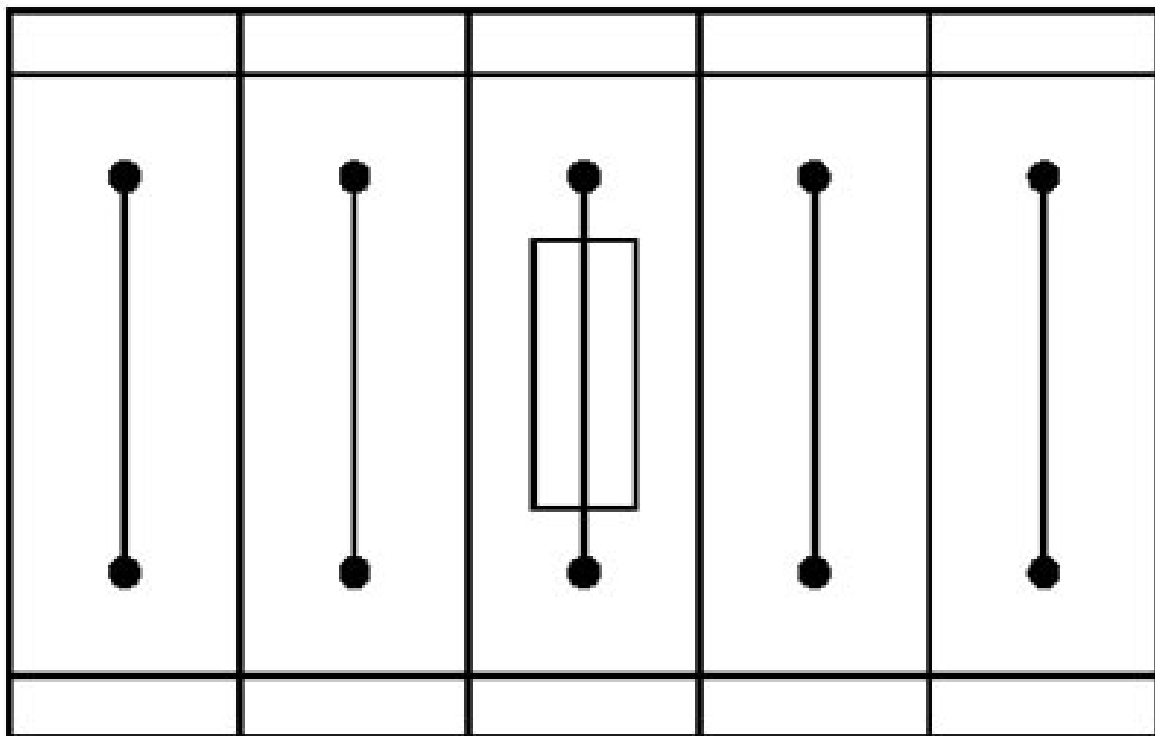


DT 6/2,5-DREHSEILED 24 (5X20) - Fuse modular terminal block

3034251

<https://www.phoenixcontact.com/in/products/3034251>

Application drawing



Fuse terminal block in single arrangement,
block consisting of one fuse terminal block and 4 feed-through terminal blocks

DT 6/2,5-DREHSILED 24 (5X20) - Fuse modular terminal block



3034251

<https://www.phoenixcontact.com/in/products/3034251>

Approvals



IECEE CB Scheme

Approval ID: NL-23160



EAC

Approval ID: RU C-DE.AI30.B.01102



KEMA-KEUR

Approval ID: 71-104946



EAC

Approval ID: RU C-DE.BL08.B.00644



cULus Recognized

Approval ID: E60425

	Nominal Voltage U_N	Nominal Current I_N	Cross Section AWG	Cross Section mm^2
Use group B				
Output	600 V	10 A	24 - 12	-
Input	600 V	10 A	20 - 8	-
Use group C				
Output	600 V	10 A	24 - 12	-
Input	600 V	10 A	20 - 8	-

DT 6/2,5-DREHSILED 24 (5X20) - Fuse modular terminal block



3034251

<https://www.phoenixcontact.com/in/products/3034251>

Classifications

ECLASS

ECLASS-11.0	27141116
ECLASS-12.0	27141116
ECLASS-13.0	27250113

ETIM

ETIM 8.0	EC000899
----------	----------

UNSPSC

UNSPSC 21.0	39121400
-------------	----------

DT 6/2,5-DREHSILED 24 (5X20) - Fuse modular terminal block



3034251

<https://www.phoenixcontact.com/in/products/3034251>

Environmental Product Compliance


REACH SVHC	Lead 7439-92-1
China RoHS	Environmentally Friendly Use Period = 50 years
	For information on hazardous substances, refer to the manufacturer's declaration available under "Downloads"

DT 6/2,5-DREHSILED 24 (5X20) - Fuse modular terminal block

3034251

<https://www.phoenixcontact.com/in/products/3034251>

Accessories

 Note: Applying some accessories below might limit this product.


FBS 2-6 - Plug-in bridge

3030336

<https://www.phoenixcontact.com/in/products/3030336>



Plug-in bridge, pitch: 6.2 mm, number of positions: 2, color: red

 Max. current carrying capacity: 24 A


FBS 3-6 - Plug-in bridge

3030242

<https://www.phoenixcontact.com/in/products/3030242>



Plug-in bridge, pitch: 6.2 mm, number of positions: 3, color: red

 Max. current carrying capacity: 24 A

DT 6/2,5-DREHSILED 24 (5X20) - Fuse modular terminal block

3034251

<https://www.phoenixcontact.com/in/products/3034251>


FBS 4-6 - Plug-in bridge

3030255

<https://www.phoenixcontact.com/in/products/3030255>



Plug-in bridge, pitch: 6.2 mm, number of positions: 4, color: red

 Max. current carrying capacity: 24 A


FBS 5-6 - Plug-in bridge

3030349

<https://www.phoenixcontact.com/in/products/3030349>



Plug-in bridge, pitch: 6.2 mm, number of positions: 5, color: red

 Max. current carrying capacity: 24 A

DT 6/2,5-DREHSEILED 24 (5X20) - Fuse modular terminal block

3034251

<https://www.phoenixcontact.com/in/products/3034251>


FBS 10-6 - Plug-in bridge

3030271

<https://www.phoenixcontact.com/in/products/3030271>



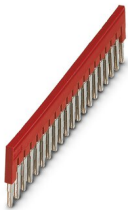
Plug-in bridge, pitch: 6.2 mm, number of positions: 10, color: red

 Max. current carrying capacity: 24 A


FBS 20-6 - Plug-in bridge

3030365

<https://www.phoenixcontact.com/in/products/3030365>



Plug-in bridge, pitch: 6.2 mm, number of positions: 20, color: red

 Max. current carrying capacity: 24 A

DT 6/2,5-DREHSILED 24 (5X20) - Fuse modular terminal block

3034251

<https://www.phoenixcontact.com/in/products/3034251>


FBS 6-6 - Plug-in bridge

1008238

<https://www.phoenixcontact.com/in/products/1008238>



Plug-in bridge, One side not fully isolated, pitch: 6.2 mm, number of positions: 6, color: red

 Max. current carrying capacity: 24 A


FBS 2-6 BU - Plug-in bridge

3036932

<https://www.phoenixcontact.com/in/products/3036932>



Plug-in bridge, pitch: 6.2 mm, number of positions: 2, color: blue

 Max. current carrying capacity: 24 A

DT 6/2,5-DREHSILED 24 (5X20) - Fuse modular terminal block

3034251

<https://www.phoenixcontact.com/in/products/3034251>


FBS 3-6 BU - Plug-in bridge

3036945

<https://www.phoenixcontact.com/in/products/3036945>



Plug-in bridge, pitch: 6.2 mm, number of positions: 3, color: blue

 Max. current carrying capacity: 24 A


FBS 4-6 BU - Plug-in bridge

3036958

<https://www.phoenixcontact.com/in/products/3036958>



Plug-in bridge, pitch: 6.2 mm, number of positions: 4, color: blue

 Max. current carrying capacity: 24 A

DT 6/2,5-DREHSEILED 24 (5X20) - Fuse modular terminal block

3034251

<https://www.phoenixcontact.com/in/products/3034251>

FBS 5-6 BU - Plug-in bridge

3036961

<https://www.phoenixcontact.com/in/products/3036961>



Plug-in bridge, pitch: 6.2 mm, number of positions: 5, color: blue

 Max. current carrying capacity: 24 A


FBS 10-6 BU - Plug-in bridge

3032198

<https://www.phoenixcontact.com/in/products/3032198>



Plug-in bridge, pitch: 6.2 mm, number of positions: 10, color: blue

 Max. current carrying capacity: 24 A

DT 6/2,5-DREHSEILED 24 (5X20) - Fuse modular terminal block

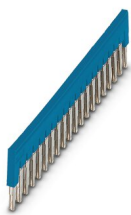
3034251

<https://www.phoenixcontact.com/in/products/3034251>

FBS 20-6 BU - Plug-in bridge

3032208

<https://www.phoenixcontact.com/in/products/3032208>



Plug-in bridge, pitch: 6.2 mm, number of positions: 20, color: blue

 Max. current carrying capacity: 24 A


FBS 50-6 BU - Plug-in bridge

3032211

<https://www.phoenixcontact.com/in/products/3032211>



Plug-in bridge, pitch: 6.2 mm, number of positions: 50, color: blue

 Max. current carrying capacity: 24 A

DT 6/2,5-DREHSILED 24 (5X20) - Fuse modular terminal block

3034251

<https://www.phoenixcontact.com/in/products/3034251>

SZF 1-0,6X3,5 - Screwdriver

1204517

<https://www.phoenixcontact.com/in/products/1204517>



Actuation tool, for ST terminal blocks, also suitable for use as a bladed screwdriver, size: 0.6 x 3.5 x 100 mm, 2-component grip, with non-slip grip

ST-BW - Actuation tool

1207608

<https://www.phoenixcontact.com/in/products/1207608>



Actuation tool, for all 2.5 mm² - 4.0 mm² spring-cages

DT 6/2,5-DREHSILED 24 (5X20) - Fuse modular terminal block



3034251

<https://www.phoenixcontact.com/in/products/3034251>

NS 35/ 7,5 PERF 2000MM - DIN rail perforated

0801733

<https://www.phoenixcontact.com/in/products/0801733>



DIN rail perforated, acc. to EN 60715, material: Steel, galvanized, passivated with a thick layer, Standard profile, color: silver, Pack of 25 (50 m)

NS 35/ 7,5 UNPERF 2000MM - DIN rail, unperforated

0801681

<https://www.phoenixcontact.com/in/products/0801681>



DIN rail, unperforated, acc. to EN 60715, material: Steel, galvanized, passivated with a thick layer, Standard profile, color: silver, Pack of 25 (50 m)

DT 6/2,5-DREHSILED 24 (5X20) - Fuse modular terminal block



3034251

<https://www.phoenixcontact.com/in/products/3034251>

NS 35/ 7,5 WH PERF 2000MM - DIN rail perforated

1204119

<https://www.phoenixcontact.com/in/products/1204119>



DIN rail perforated, acc. to EN 60715, material: Steel, Galvanized, white passivated, Standard profile, color: silver, Pack of 25 (50 m)

NS 35/ 7,5 WH UNPERF 2000MM-VPE 10 - DIN rail, unperforated

1204122

<https://www.phoenixcontact.com/in/products/1204122>



DIN rail, unperforated, acc. to EN 60715, material: Steel, Galvanized, white passivated, Standard profile, color: silver, Pack of 10 (20 m)

DT 6/2,5-DREHSILED 24 (5X20) - Fuse modular terminal block



3034251

<https://www.phoenixcontact.com/in/products/3034251>

NS 35/ 7,5 AL UNPERF 2000MM - DIN rail, unperforated

0801704

<https://www.phoenixcontact.com/in/products/0801704>



DIN rail, unperforated, acc. to EN 60715, material: Aluminum, uncoated, Standard profile, color: silver, Pack of 25 (50 m)

NS 35/ 7,5 ZN PERF 2000MM - DIN rail perforated

1206421

<https://www.phoenixcontact.com/in/products/1206421>



DIN rail perforated, acc. to EN 60715, material: Steel, galvanized, Standard profile, color: silver, Pack of 25 (50 m)

DT 6/2,5-DREHSILED 24 (5X20) - Fuse modular terminal block



3034251

<https://www.phoenixcontact.com/in/products/3034251>

NS 35/ 7,5 ZN UNPERF 2000MM - DIN rail, unperforated

1206434

<https://www.phoenixcontact.com/in/products/1206434>



DIN rail, unperforated, acc. to EN 60715, material: Steel, galvanized, Standard profile, color: silver, Pack of 25 (50 m)

NS 35/ 7,5 CU UNPERF 2000MM-VPE 10 - DIN rail, unperforated

0801762

<https://www.phoenixcontact.com/in/products/0801762>



DIN rail, unperforated, acc. to EN 60715, material: Copper, uncoated, Standard profile, color: copper-colored, Pack of 10 (20 m)

DT 6/2,5-DREHSILED 24 (5X20) - Fuse modular terminal block



3034251

<https://www.phoenixcontact.com/in/products/3034251>

NS 35/ 7,5 CAP - End cap

1206560

<https://www.phoenixcontact.com/in/products/1206560>

DIN rail end piece, for DIN rail NS 35/7.5



NS 35/15 PERF 2000MM - DIN rail perforated

1201730

<https://www.phoenixcontact.com/in/products/1201730>



DIN rail perforated, similar to EN 60715, material: Steel, galvanized, passivated with a thick layer, Standard profile, color: silver, Pack of 25 (50 m)

DT 6/2,5-DREHSILED 24 (5X20) - Fuse modular terminal block



3034251

<https://www.phoenixcontact.com/in/products/3034251>

NS 35/15 UNPERF 2000MM - DIN rail, unperforated

1201714

<https://www.phoenixcontact.com/in/products/1201714>



DIN rail, unperforated, similar to EN 60715, material: Steel, galvanized, passivated with a thick layer, Standard profile, color: silver, Pack of 25 (50 m)

NS 35/15 WH PERF 2000MM - DIN rail perforated

0806602

<https://www.phoenixcontact.com/in/products/0806602>



DIN rail perforated, similar to EN 60715, material: Steel, Galvanized, white passivated, Standard profile, color: white, Pack of 25 (50 m)

DT 6/2,5-DREHSILED 24 (5X20) - Fuse modular terminal block



3034251

<https://www.phoenixcontact.com/in/products/3034251>

NS 35/15 WH UNPERF 2000MM-VPE 10 - DIN rail, unperforated

1204135

<https://www.phoenixcontact.com/in/products/1204135>



DIN rail, unperforated, similar to EN 60715, material: Steel, Galvanized, white passivated, Standard profile, color: silver, Pack of 10 (20 m)

NS 35/15 AL UNPERF 2000MM - DIN rail, unperforated

1201756

<https://www.phoenixcontact.com/in/products/1201756>



DIN rail, unperforated, similar to EN 60715, material: Aluminum, uncoated, Standard profile, color: silver

DT 6/2,5-DREHSILED 24 (5X20) - Fuse modular terminal block



3034251

<https://www.phoenixcontact.com/in/products/3034251>

NS 35/15 ZN PERF 2000MM - DIN rail perforated

1206599

<https://www.phoenixcontact.com/in/products/1206599>



DIN rail perforated, similar to EN 60715, material: Steel, galvanized, Standard profile, color: silver, Pack of 25 (50 m)

NS 35/15 ZN UNPERF 2000MM - DIN rail, unperforated

1206586

<https://www.phoenixcontact.com/in/products/1206586>



DIN rail, unperforated, similar to EN 60715, material: Steel, galvanized, Standard profile, color: silver, Pack of 25 (50 m)

DT 6/2,5-DREHSILED 24 (5X20) - Fuse modular terminal block



3034251

<https://www.phoenixcontact.com/in/products/3034251>

NS 35/15 CU UNPERF 2000MM-VPE 10 - DIN rail, unperforated

1201895

<https://www.phoenixcontact.com/in/products/1201895>



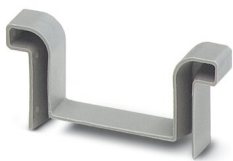
DIN rail, unperforated, similar to EN 60715, material: Copper, uncoated, Standard profile, color: copper-colored, Pack of 10 (20 m)

NS 35/15 CAP - End cap

1206573

<https://www.phoenixcontact.com/in/products/1206573>

DIN rail end piece, for DIN rail NS 35/15



DT 6/2,5-DREHSILED 24 (5X20) - Fuse modular terminal block



3034251

<https://www.phoenixcontact.com/in/products/3034251>

NS 35/15-2,3 UNPERF 2000MM-VPE 10 - DIN rail, unperforated

1201798

<https://www.phoenixcontact.com/in/products/1201798>



DIN rail, unperforated, acc. to EN 60715, material: Steel, galvanized, passivated with a thick layer, Standard profile 2.3 mm, color: silver, Pack of 10 (20 m)

PS-6 - Test plugs

3030996

<https://www.phoenixcontact.com/in/products/3030996>



Test plugs, Modular test plug, number of positions: 1, color: red

DT 6/2,5-DREHSEILED 24 (5X20) - Fuse modular terminal block



3034251

<https://www.phoenixcontact.com/in/products/3034251>

PS-6/2,3MM RD - Test plugs

3038736

<https://www.phoenixcontact.com/in/products/3038736>

Test plugs, number of positions: 1, color: red



CLIPFIX 35 - End clamp

3022218

<https://www.phoenixcontact.com/in/products/3022218>

Quick mounting end clamp for NS 35/7,5 DIN rail or NS 35/15 DIN rail, with marking option, width: 9.5 mm, color: gray



DT 6/2,5-DREHSEILED 24 (5X20) - Fuse modular terminal block

3034251

<https://www.phoenixcontact.com/in/products/3034251>

CLIPFIX 35-5 - End clamp

3022276

<https://www.phoenixcontact.com/in/products/3022276>

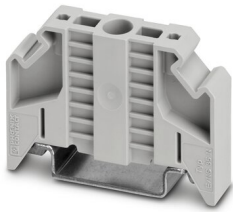


Quick mounting end clamp for NS 35/7,5 DIN rail or NS 35/15 DIN rail, with marking option, with parking option for FBS...5, FBS...6, KSS 5, KSS 6, width: 5.15 mm, color: gray

E/NS 35 N - End clamp

0800886

<https://www.phoenixcontact.com/in/products/0800886>



End clamp, width: 9.5 mm, color: gray

DT 6/2,5-DREHSEILED 24 (5X20) - Fuse modular terminal block

3034251

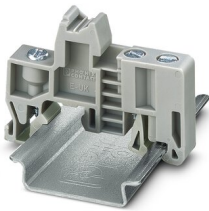
<https://www.phoenixcontact.com/in/products/3034251>

E/UK - End clamp

1201442

<https://www.phoenixcontact.com/in/products/1201442>

End clamp, material: PA, color: gray, Mounting on a DIN rail NS 32 or NS 35



E/UK 1 - End clamp

1201413

<https://www.phoenixcontact.com/in/products/1201413>

End clamps, for supporting the ends of double-level and three-level terminal blocks, width: 10 mm, color: gray



DT 6/2,5-DREHSILED 24 (5X20) - Fuse modular terminal block



3034251

<https://www.phoenixcontact.com/in/products/3034251>

PAI-4-FIX-5/6 BU - Test adapter

3035975

<https://www.phoenixcontact.com/in/products/3035975>



4 mm test adapter, for terminal blocks with 5.2 mm and 6.2 mm pitch

PAI-4-FIX-5/6 OG - Test adapter

3035974

<https://www.phoenixcontact.com/in/products/3035974>



4 mm test adapter, for terminal blocks with 5.2 mm and 6.2 mm pitch

DT 6/2,5-DREHSILED 24 (5X20) - Fuse modular terminal block



3034251

<https://www.phoenixcontact.com/in/products/3034251>

PAI-4-FIX-5/6 YE - Test adapter

3035977

<https://www.phoenixcontact.com/in/products/3035977>



4 mm test adapter, for terminal blocks with 5.2 mm and 6.2 mm pitch

PAI-4-FIX-5/6 RD - Test adapter

3035976

<https://www.phoenixcontact.com/in/products/3035976>



4 mm test adapter, for terminal blocks with 5.2 mm and 6.2 mm pitch

DT 6/2,5-DREHSILED 24 (5X20) - Fuse modular terminal block



3034251

<https://www.phoenixcontact.com/in/products/3034251>

PAI-4-FIX-5/6 GN - Test adapter

3035978

<https://www.phoenixcontact.com/in/products/3035978>



4 mm test adapter, for terminal blocks with 5.2 mm and 6.2 mm pitch

PAI-4-FIX-5/6 BK - Test adapter

3035980

<https://www.phoenixcontact.com/in/products/3035980>



4 mm test adapter, for terminal blocks with 5.2 mm and 6.2 mm pitch

DT 6/2,5-DREHSILED 24 (5X20) - Fuse modular terminal block



3034251

<https://www.phoenixcontact.com/in/products/3034251>

PAI-4-FIX-5/6 GY - Test adapter

3035982

<https://www.phoenixcontact.com/in/products/3035982>



4 mm test adapter, for terminal blocks with 5.2 mm and 6.2 mm pitch

PAI-4-FIX-5/6 VT - Test adapter

3035979

<https://www.phoenixcontact.com/in/products/3035979>



4 mm test adapter, for terminal blocks with 5.2 mm and 6.2 mm pitch

DT 6/2,5-DREHSILED 24 (5X20) - Fuse modular terminal block



3034251

<https://www.phoenixcontact.com/in/products/3034251>

PAI-4-FIX-5/6 BN - Test adapter

3035981

<https://www.phoenixcontact.com/in/products/3035981>



4 mm test adapter, for terminal blocks with 5.2 mm and 6.2 mm pitch

PAI-4-FIX-5/6 WH - Test adapter

3035983

<https://www.phoenixcontact.com/in/products/3035983>



4 mm test adapter, for terminal blocks with 5.2 mm and 6.2 mm pitch

Phoenix Contact 2023 © - all rights reserved

<https://www.phoenixcontact.com>

PHOENIX CONTACT (I) Pvt. Ltd.

A-58/2, Okhla Industrial Area, Phase - II, New Delhi-110 020

+91.1275.71420

info@phoenixcontact.co.in