

ZRV 8 - Marshalling panel

3025956

<https://www.phoenixcontact.com/in/products/3025956>



Please be informed that the data shown in this PDF document is generated from our Online Catalog. Please find the complete data in the user documentation. Our General Terms of Use for Downloads are valid.



Marshalling panel, nom. voltage: 250 V, nominal current: 10 A, connection method: Spring-cage connection, 1st, 2nd, 3rd, 4th, 5th, 6th, 7th and 8th level, Rated cross section: 1 mm², cross section: 0.14 mm² - 1.5 mm², mounting: NS 35/7,5, NS 35/15, color: gray

Commercial Data

Item number	3025956
Packing unit	10 pc
Minimum order quantity	10 pc
Sales Key	BE6
Product Key	BE6211
Catalog Page	Page 241 (C-3-2013)
GTIN	4017918147556
Weight per Piece (including packing)	78.15 g
Weight per Piece (excluding packing)	77.66 g
Customs tariff number	85369010
Country of origin	IN

ZRV 8 - Marshalling panel



3025956

<https://www.phoenixcontact.com/in/products/3025956>

Technical Data

Product properties

Product type	Potential distributor
Number of connections	32
Number of rows	8
Potentials	8

Insulation characteristics

Overvoltage category	III
Degree of pollution	3

Electrical properties

Rated surge voltage	4 kV
---------------------	------

Connection data

Number of connections per level	32
Nominal cross section	1 mm ²

1st, 2nd, 3rd, 4th, 5th, 6th, 7th and 8th level

Stripping length	8 mm
Connection in acc. with standard	IEC 60947-7-1
Conductor cross section rigid	0.14 mm ² ... 1.5 mm ²
Cross section AWG	26 ... 14 (converted acc. to IEC)
Conductor cross section flexible	0.14 mm ² ... 1 mm ²
Conductor cross section, flexible [AWG]	26 ... 16 (converted acc. to IEC)
Conductor cross-section flexible (ferrule without plastic sleeve)	0.14 mm ² ... 0.75 mm ²
Flexible conductor cross section (ferrule with plastic sleeve)	0.14 mm ² ... 0.75 mm ²
Nominal current	10 A
Maximum load current	10 A (with 1.5 mm ² conductor cross section)
Nominal voltage	250 V
Nominal cross section	1 mm ²

Dimensions

Width	7.62 mm
End cover width	7.62 mm
Height NS 35/15	89.5 mm
Height NS 35/7,5	82 mm
Height	3.228 "
Length	225 mm

Material specifications

Color	gray
Flammability rating according to UL 94	V0
Insulating material group	IIIa

ZRV 8 - Marshalling panel



3025956

<https://www.phoenixcontact.com/in/products/3025956>

Insulating material	PC
Temperature index of insulation material (DIN EN 60216-1 (VDE 0304-21))	130 °C
Relative insulation material temperature index (Elec., UL 746 B)	125 °C

Electrical tests

Surge voltage test

Test voltage setpoint	4.8 kV
Result	Test passed

Temperature-rise test

Requirement temperature-rise test	Increase in temperature \leq 45 K
Result	Test passed
Short-time withstand current 1.5 mm ²	0.18 kA
Result	Test passed

Power-frequency withstand voltage

Test voltage setpoint	1.5 kV
Result	Test passed

Mechanical properties

Mechanical data

Open side panel	Yes
-----------------	-----

Mechanical tests

Mechanical strength

Result	Test passed
--------	-------------

Attachment on the carrier

DIN rail/fixing support	NS 35
Test force setpoint	1 N
Result	Test passed

Test for conductor damage and slackening

Rotation speed	10 rpm
Revolutions	135
Conductor cross section/weight	0.14 mm ² / 0.2 kg
	1 mm ² / 0.4 kg
	1.5 mm ² / 0.4 kg
Result	Test passed

Environmental and real-life conditions

Aging

Temperature cycles	192
Result	Test passed

ZRV 8 - Marshalling panel



3025956

<https://www.phoenixcontact.com/in/products/3025956>

Needle-flame test

Time of exposure	30 s
Result	Test passed

Standards and regulations

Connection in acc. with standard	IEC 60947-7-1
----------------------------------	---------------

Mounting

Mounting type	NS 35/7,5
	NS 35/15

ZRV 8 - Marshalling panel

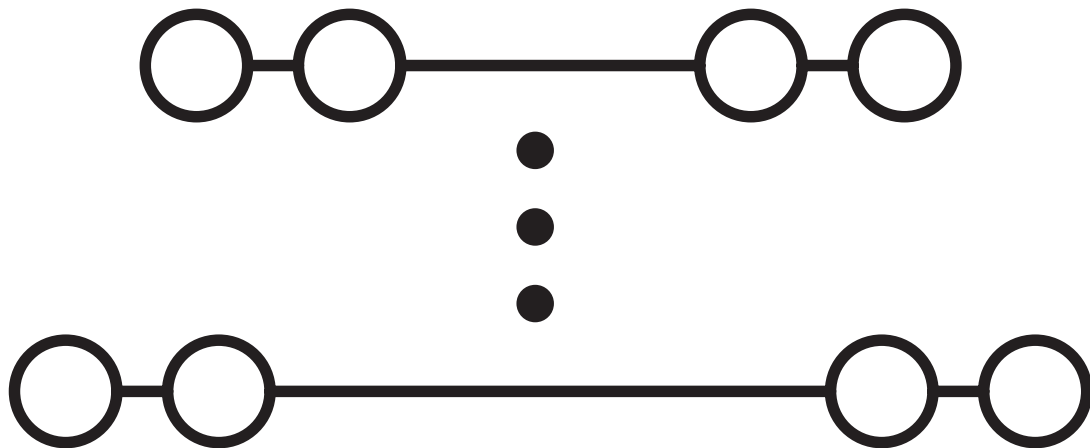
3025956

<https://www.phoenixcontact.com/in/products/3025956>



Drawings

Circuit diagram



ZRV 8 - Marshalling panel

3025956

<https://www.phoenixcontact.com/in/products/3025956>



Environmental Product Compliance

China RoHS	Environmentally friendly use period: unlimited = EFUP-e
	No hazardous substances above threshold values

ZRV 8 - Marshalling panel

3025956

<https://www.phoenixcontact.com/in/products/3025956>



Accessories

RV 8-SPSA - Mounting material

3193011

<https://www.phoenixcontact.com/in/products/3193011>



Mounting material

SZF 0-0,4X2,5 - Screwdriver

1204504

<https://www.phoenixcontact.com/in/products/1204504>



Actuation tool, for ST terminal blocks, also suitable for use as a bladed screwdriver, size: 0.4 x 2.5 x 75 mm, 2-component grip, with non-slip grip

ZRV 8 - Marshalling panel

3025956

<https://www.phoenixcontact.com/in/products/3025956>



DB 50- 90 BU - Wire bridge

2821180

<https://www.phoenixcontact.com/in/products/2821180>

Flexible wire loop bridge, 50-pos., conductor cross-section: 0.5 mm², loop length: 90 mm, ferrule length: 8 mm, color: blue



DB 50- 90 BK - Wire bridge

2820916

<https://www.phoenixcontact.com/in/products/2820916>

Flexible wire loop bridge, 50-pos., conductor cross-section: 0.5 mm², loop length: 90 mm, ferrule length: 8 mm, color: black



ZRV 8 - Marshalling panel

3025956

<https://www.phoenixcontact.com/in/products/3025956>



DB 50- 90 GY - Wire bridge

2820929

<https://www.phoenixcontact.com/in/products/2820929>

Flexible wire loop bridge, 50-pos., conductor cross-section: 0.5 mm², loop length: 90 mm, ferrule length: 8 mm, color: gray



NS 35/ 7,5 PERF 2000MM - DIN rail perforated

0801733

<https://www.phoenixcontact.com/in/products/0801733>

DIN rail perforated, acc. to EN 60715, material: Steel, galvanized, passivated with a thick layer, Standard profile, color: silver, Pack of 25 (50 m)



ZRV 8 - Marshalling panel

3025956

<https://www.phoenixcontact.com/in/products/3025956>



NS 35/ 7,5 UNPERF 2000MM - DIN rail, unperforated

0801681

<https://www.phoenixcontact.com/in/products/0801681>



DIN rail, unperforated, acc. to EN 60715, material: Steel, galvanized, passivated with a thick layer, Standard profile, color: silver, Pack of 25 (50 m)

NS 35/ 7,5 WH PERF 2000MM - DIN rail perforated

1204119

<https://www.phoenixcontact.com/in/products/1204119>



DIN rail perforated, acc. to EN 60715, material: Steel, Galvanized, white passivated, Standard profile, color: silver, Pack of 25 (50 m)

ZRV 8 - Marshalling panel

3025956

<https://www.phoenixcontact.com/in/products/3025956>



NS 35/ 7,5 WH UNPERF 2000MM-VPE 10 - DIN rail, unperforated

1204122

<https://www.phoenixcontact.com/in/products/1204122>



DIN rail, unperforated, acc. to EN 60715, material: Steel, Galvanized, white passivated, Standard profile, color: silver, Pack of 10 (20 m)

NS 35/ 7,5 AL UNPERF 2000MM - DIN rail, unperforated

0801704

<https://www.phoenixcontact.com/in/products/0801704>



DIN rail, unperforated, acc. to EN 60715, material: Aluminum, uncoated, Standard profile, color: silver, Pack of 25 (50 m)

ZRV 8 - Marshalling panel

3025956

<https://www.phoenixcontact.com/in/products/3025956>



NS 35/ 7,5 ZN PERF 2000MM - DIN rail perforated

1206421

<https://www.phoenixcontact.com/in/products/1206421>



DIN rail perforated, acc. to EN 60715, material: Steel, galvanized, Standard profile, color: silver, Pack of 25 (50 m)

NS 35/ 7,5 ZN UNPERF 2000MM - DIN rail, unperforated

1206434

<https://www.phoenixcontact.com/in/products/1206434>



DIN rail, unperforated, acc. to EN 60715, material: Steel, galvanized, Standard profile, color: silver, Pack of 25 (50 m)

ZRV 8 - Marshalling panel

3025956

<https://www.phoenixcontact.com/in/products/3025956>



NS 35/ 7,5 CU UNPERF 2000MM-VPE 10 - DIN rail, unperforated

0801762

<https://www.phoenixcontact.com/in/products/0801762>



DIN rail, unperforated, acc. to EN 60715, material: Copper, uncoated, Standard profile, color: copper-colored, Pack of 10 (20 m)

NS 35/ 7,5 CAP - End cap

1206560

<https://www.phoenixcontact.com/in/products/1206560>

DIN rail end piece, for DIN rail NS 35/7.5



ZRV 8 - Marshalling panel

3025956

<https://www.phoenixcontact.com/in/products/3025956>



ZB 7,62:UNBEDRUCKT - Zack marker strip

1054000

<https://www.phoenixcontact.com/in/products/1054000>

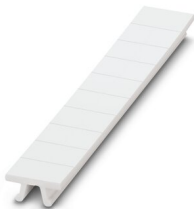


Zack marker strip, Strip, white, unlabeled, can be labeled with: PLOTMARK, CMS-P1-PLOTTER, mounting type: snapped, for terminal block width: 7.62 mm, lettering field size: 10.5 x 7.5 mm, Number of individual labels: 10

ZB 7,62 CUS - Zack marker strip

0824997

<https://www.phoenixcontact.com/in/products/0824997>



Zack marker strip, can be ordered: Strip, white, labeled according to customer specifications, mounting type: snap into tall marker groove, for terminal block width: 7.62 mm, lettering field size: 10.5 x 7.5 mm, Number of individual labels: 10

ZRV 8 - Marshalling panel

3025956

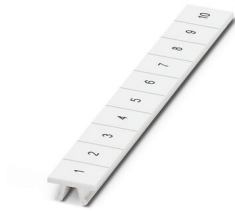
<https://www.phoenixcontact.com/in/products/3025956>



ZB 7,62,LGS:FORTL.ZAHLEN - Zack marker strip

1054233

<https://www.phoenixcontact.com/in/products/1054233>



Zack marker strip, Strip, white, labeled, can be labeled with: CMS-P1-PLOTTER, printed horizontally: consecutive numbers 1 ... 10, 11 ... 20, etc. up to 91 ... 100, mounting type: snapped, for terminal block width: 7.62 mm, lettering field size: 10.5 x 7.5 mm, Number of individual labels: 10

CLIPFIX 35 - End clamp

3022218

<https://www.phoenixcontact.com/in/products/3022218>



Quick mounting end clamp for NS 35/7,5 DIN rail or NS 35/15 DIN rail, with marking option, width: 9.5 mm, color: gray

ZRV 8 - Marshalling panel

3025956

<https://www.phoenixcontact.com/in/products/3025956>



CLIPFIX 35-5 - End clamp

3022276

<https://www.phoenixcontact.com/in/products/3022276>

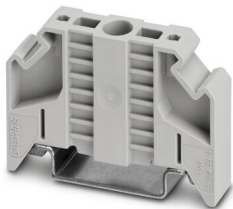


Quick mounting end clamp for NS 35/7,5 DIN rail or NS 35/15 DIN rail, with marking option, with parking option for FBS...5, FBS...6, KSS 5, KSS 6, width: 5.15 mm, color: gray

E/NS 35 N - End clamp

0800886

<https://www.phoenixcontact.com/in/products/0800886>



End clamp, width: 9.5 mm, color: gray

ZRV 8 - Marshalling panel

3025956

<https://www.phoenixcontact.com/in/products/3025956>

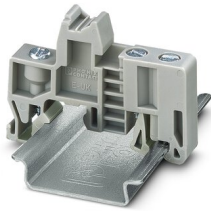


E/UK - End clamp

1201442

<https://www.phoenixcontact.com/in/products/1201442>

End clamp, material: PA, color: gray, Mounting on a DIN rail NS 32 or NS 35



E/UK 1 - End clamp

1201413

<https://www.phoenixcontact.com/in/products/1201413>

End clamps, for supporting the ends of double-level and three-level terminal blocks, width: 10 mm, color: gray



Phoenix Contact 2023 © - all rights reserved
<https://www.phoenixcontact.com>

PHOENIX CONTACT (I) Pvt. Ltd.
A-58/2, Okhla Industrial Area, Phase - II, New Delhi-110 020

+91.1275.71420
info@phoenixcontact.co.in