

# FT 6-DREHSILA 250 (5X20) - Fuse modular terminal block



3025043

<https://www.phoenixcontact.com/in/products/3025043>

Please be informed that the data shown in this PDF document is generated from our Online Catalog. Please find the complete data in the user documentation. Our General Terms of Use for Downloads are valid.



Fuse modular terminal block, without actuation lever, fuse type: Glass / ceramics / ..., fuse type: G / 5 x 20, nom. voltage: 1000 V, nominal current: 10 A, connection method: Push-in connection, 1 level, Rated cross section: 6 mm<sup>2</sup>, cross section: 0.5 mm<sup>2</sup>- 10 mm<sup>2</sup>, mounting type: NS 35/7,5, NS 35/15, color: black

## Commercial Data

Item number	3025043
Packing unit	25 pc
Minimum order quantity	25 pc
Sales Key	BE2
Product Key	BE2235
GTIN	4055626379418
Weight per Piece (including packing)	9.99 g
Weight per Piece (excluding packing)	9.99 g
Customs tariff number	85389099
Country of origin	IN

# FT 6-DREHSILA 250 (5X20) - Fuse modular terminal block



3025043

<https://www.phoenixcontact.com/in/products/3025043>

## Technical Data

### Product properties

Product type	Fuse terminal block
Number of connections	2
Number of rows	1
Potentials	1

### Insulation characteristics

Overvoltage category	III
Degree of pollution	3

### Electrical properties

Fuse type	Glass / ceramics / ...
Rated surge voltage	6 kV
Fuse	G / 5 x 20
LED voltage range	110 V AC/DC ... 250 V AC/DC (LED red)
LED current range	0.5 mA ... 2.5 mA
Maximum power dissipation	max. 1.6 W (with single arrangement of the fuse terminal block in the event of overload) max. 1.6 W (With interconnected arrangement of several fuse terminal blocks in the event of overload) max. 4 W (with single arrangement of the fuse terminal block in the event of a short-circuit) max. 2.5 W (With interconnected arrangement of several fuse terminal blocks in the event of a short-circuit)

### Input data

LED voltage range	110 V AC/DC ... 250 V AC/DC (LED red)
-------------------	---------------------------------------

### Connection data

Number of connections per level	2
Nominal cross section	6 mm <sup>2</sup>
Rated cross section AWG	10

#### 1 level

Stripping length	10 mm ... 12 mm
Internal cylindrical gage	A5
Connection in acc. with standard	IEC 60947-7-3
Conductor cross section rigid	0.5 mm <sup>2</sup> ... 10 mm <sup>2</sup>
Cross section AWG	20 ... 8 (converted acc. to IEC)
Conductor cross section flexible	0.5 mm <sup>2</sup> ... 6 mm <sup>2</sup>
Conductor cross section, flexible [AWG]	20 ... 10 (converted acc. to IEC)
Conductor cross-section flexible (ferrule without plastic sleeve)	0.5 mm <sup>2</sup> ... 6 mm <sup>2</sup>
Flexible conductor cross section (ferrule with plastic sleeve)	0.5 mm <sup>2</sup> ... 6 mm <sup>2</sup>
Conductor cross-section flexible (2 conductors with the same	0.5 mm <sup>2</sup> ... 1.5 mm <sup>2</sup>

# FT 6-DREHSILA 250 (5X20) - Fuse modular terminal block



3025043

<https://www.phoenixcontact.com/in/products/3025043>

cross-section, with TWIN ferrule and plastic sleeve)	
2 conductors with the same cross section, flexible, with TWIN ferrule with plastic sleeve	0.5 mm <sup>2</sup> ... 1.5 mm <sup>2</sup>
Nominal current	10 A
Maximum load current	10 A (the current is determined by the fuse used)
Nominal voltage	1000 V
Nominal cross section	6 mm <sup>2</sup>

## 1 level Connection cross sections directly pluggable

Conductor cross section rigid	1 mm <sup>2</sup> ... 10 mm <sup>2</sup>
Conductor cross-section flexible (ferrule without plastic sleeve)	1 mm <sup>2</sup> ... 6 mm <sup>2</sup>
Flexible conductor cross section (ferrule with plastic sleeve)	1 mm <sup>2</sup> ... 6 mm <sup>2</sup>

## Dimensions

Width	12.3 mm
End cover width	2.2 mm
Height	49.7 mm
Height NS 35/15	58.7 mm
Height NS 35/7,5	51.2 mm
Length	77.7 mm

## Material specifications

Color	black
Flammability rating according to UL 94	V0
Insulating material group	I
Insulating material	PA

## Mechanical properties

### Mechanical data

Open side panel	No
-----------------	----

## Environmental and real-life conditions

### Ambient conditions

Ambient temperature (operation)	-60 °C ... 105 °C (max. short-term operating temperature RTI Elec.)
Ambient temperature (storage/transport)	-25 °C ... 60 °C (for a short time, not exceeding 24 h, -60 °C to +70 °C)
Ambient temperature (assembly)	-5 °C ... 70 °C
Ambient temperature (actuation)	-5 °C ... 70 °C
Permissible humidity (storage/transport)	30 % ... 70 %

## Standards and regulations

Connection in acc. with standard	IEC 60947-7-3
----------------------------------	---------------

## Mounting

# FT 6-DREHSILA 250 (5X20) - Fuse modular terminal block



3025043

<https://www.phoenixcontact.com/in/products/3025043>

Mounting type	NS 35/7,5
	NS 35/15

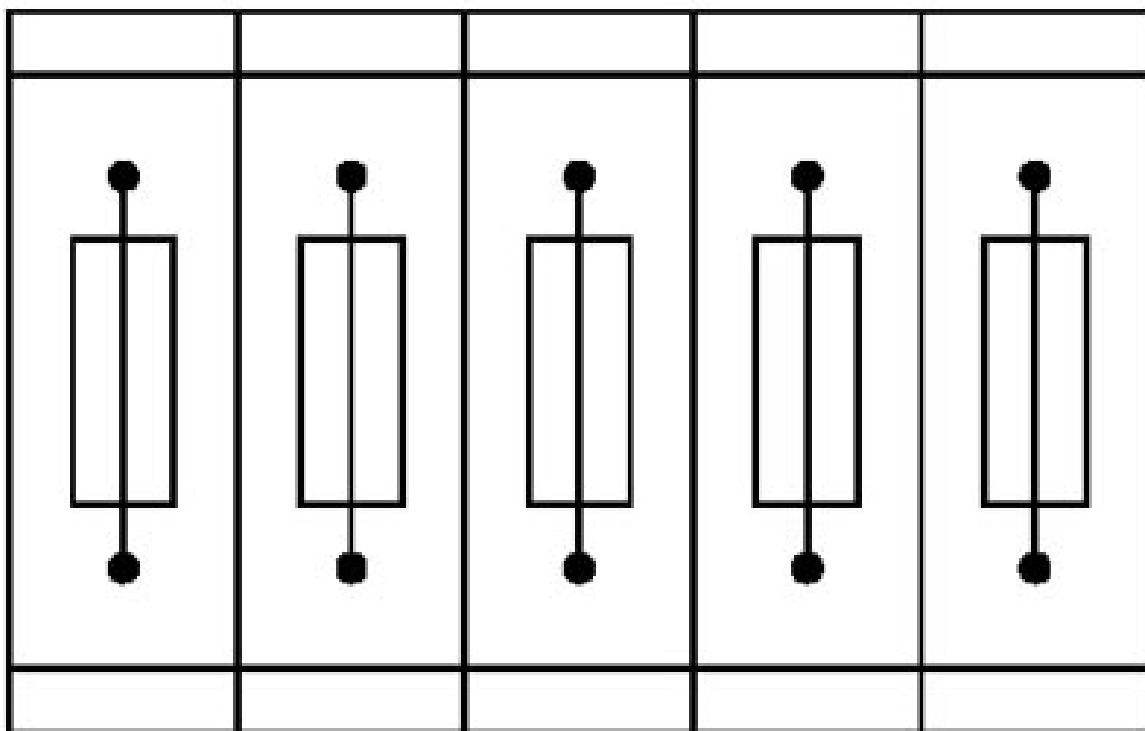
# FT 6-DREHSILA 250 (5X20) - Fuse modular terminal block

3025043

<https://www.phoenixcontact.com/in/products/3025043>

## Drawings

### Application drawing



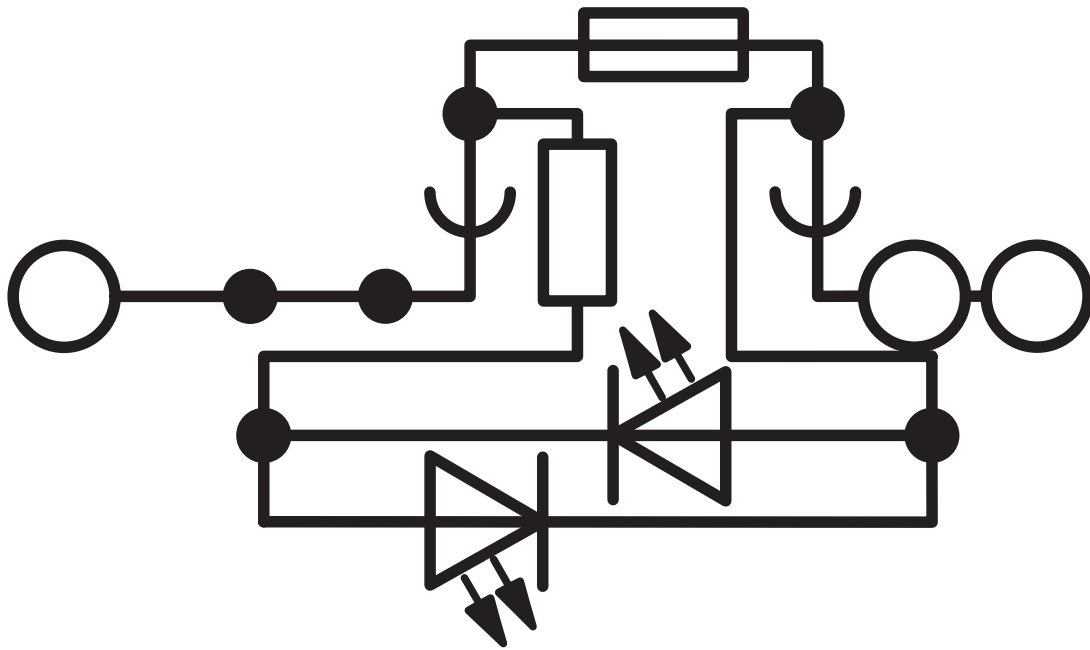
Fuse terminal blocks in interconnected arrangement,  
block consisting of 5 fuse terminal blocks

# FT 6-DREHSILA 250 (5X20) - Fuse modular terminal block

3025043

<https://www.phoenixcontact.com/in/products/3025043>

Circuit diagram

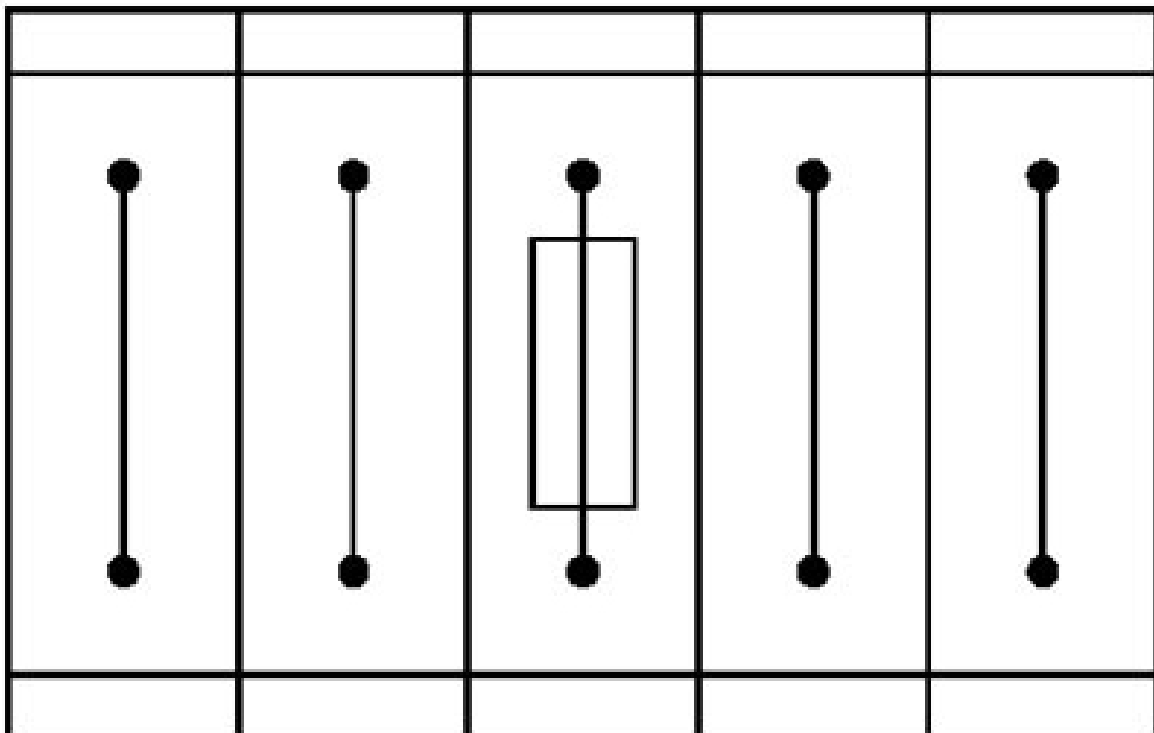


# FT 6-DREHSILA 250 (5X20) - Fuse modular terminal block

3025043

<https://www.phoenixcontact.com/in/products/3025043>

Application drawing



Fuse terminal block in single arrangement,  
block consisting of one fuse terminal block and 4 feed-through terminal blocks


# FT 6-DREHSILA 250 (5X20) - Fuse modular terminal block



3025043

<https://www.phoenixcontact.com/in/products/3025043>

## Approvals

 <b>cULus Recognized</b> Approval ID: E60425		Nominal Voltage $U_N$	Nominal Current $I_N$	Cross Section AWG	Cross Section $\text{mm}^2$
Use group B		600 V	10 A	20 - 8	-
Use group C		600 V	10 A	20 - 8	-



# FT 6-DREHSILA 250 (5X20) - Fuse modular terminal block



3025043

<https://www.phoenixcontact.com/in/products/3025043>

## Classifications

### ECLASS

ECLASS-11.0	27141116
ECLASS-12.0	27141116
ECLASS-13.0	27250113

### ETIM

ETIM 7.0	EC000899
----------	----------

# FT 6-DREHSILA 250 (5X20) - Fuse modular terminal block



3025043

<https://www.phoenixcontact.com/in/products/3025043>

## Environmental Product Compliance

REACH SVHC	Lead 7439-92-1
China RoHS	Environmentally Friendly Use Period = 50 years
	For information on hazardous substances, refer to the manufacturer's declaration available under "Downloads"

# FT 6-DREHSILA 250 (5X20) - Fuse modular terminal block

3025043

<https://www.phoenixcontact.com/in/products/3025043>

## Accessories

### FBS 2-6 - Plug-in bridge

3030336

<https://www.phoenixcontact.com/in/products/3030336>



Plug-in bridge, pitch: 6.2 mm, number of positions: 2, color: red

---

### FBS 2-6 GY - Plug-in bridge

3032237

<https://www.phoenixcontact.com/in/products/3032237>



Plug-in bridge, pitch: 6.2 mm, number of positions: 2, color: gray

# FT 6-DREHSILA 250 (5X20) - Fuse modular terminal block

3025043

<https://www.phoenixcontact.com/in/products/3025043>

## FBS 2-6 BU - Plug-in bridge

3036932

<https://www.phoenixcontact.com/in/products/3036932>



Plug-in bridge, pitch: 6.2 mm, number of positions: 2, color: blue

---

## SZF 2-0,8X4,0 - Screwdriver

1204520

<https://www.phoenixcontact.com/in/products/1204520>



Actuation tool, for ST terminal blocks, also suitable for use as a bladed screwdriver, size: 0.8 x 4.0 x 100 mm, 2-component grip, with non-slip grip

# FT 6-DREHSILA 250 (5X20) - Fuse modular terminal block



3025043

<https://www.phoenixcontact.com/in/products/3025043>

## ST-BW - Actuation tool

1207608

<https://www.phoenixcontact.com/in/products/1207608>

Actuation tool, for all 2.5 mm<sup>2</sup> - 4.0 mm<sup>2</sup> spring-cages



---

## NS 35/ 7,5 PERF 2000MM - DIN rail perforated

0801733

<https://www.phoenixcontact.com/in/products/0801733>



DIN rail perforated, acc. to EN 60715, material: Steel, galvanized, passivated with a thick layer, Standard profile, color: silver, Pack of 25 (50 m)

# FT 6-DREHSILA 250 (5X20) - Fuse modular terminal block

3025043

<https://www.phoenixcontact.com/in/products/3025043>

## NS 35/ 7,5 UNPERF 2000MM - DIN rail, unperforated

0801681

<https://www.phoenixcontact.com/in/products/0801681>



DIN rail, unperforated, acc. to EN 60715, material: Steel, galvanized, passivated with a thick layer, Standard profile, color: silver, Pack of 25 (50 m)

---

## NS 35/ 7,5 WH PERF 2000MM - DIN rail perforated

1204119

<https://www.phoenixcontact.com/in/products/1204119>



DIN rail perforated, acc. to EN 60715, material: Steel, Galvanized, white passivated, Standard profile, color: silver, Pack of 25 (50 m)

# FT 6-DREHSILA 250 (5X20) - Fuse modular terminal block

3025043

<https://www.phoenixcontact.com/in/products/3025043>

## NS 35/ 7,5 WH UNPERF 2000MM-VPE 10 - DIN rail, unperforated

1204122

<https://www.phoenixcontact.com/in/products/1204122>



DIN rail, unperforated, acc. to EN 60715, material: Steel, Galvanized, white passivated, Standard profile, color: silver, Pack of 10 (20 m)

---

## NS 35/ 7,5 AL UNPERF 2000MM - DIN rail, unperforated

0801704

<https://www.phoenixcontact.com/in/products/0801704>



DIN rail, unperforated, acc. to EN 60715, material: Aluminum, uncoated, Standard profile, color: silver, Pack of 25 (50 m)

# FT 6-DREHSILA 250 (5X20) - Fuse modular terminal block

3025043

<https://www.phoenixcontact.com/in/products/3025043>

## NS 35/ 7,5 ZN PERF 2000MM - DIN rail perforated

1206421

<https://www.phoenixcontact.com/in/products/1206421>



DIN rail perforated, acc. to EN 60715, material: Steel, galvanized, Standard profile, color: silver, Pack of 25 (50 m)

---

## NS 35/ 7,5 ZN UNPERF 2000MM - DIN rail, unperforated

1206434

<https://www.phoenixcontact.com/in/products/1206434>



DIN rail, unperforated, acc. to EN 60715, material: Steel, galvanized, Standard profile, color: silver, Pack of 25 (50 m)



# FT 6-DREHSILA 250 (5X20) - Fuse modular terminal block

3025043

<https://www.phoenixcontact.com/in/products/3025043>

NS 35/ 7,5 CU UNPERF 2000MM-VPE 10 - DIN rail, unperforated

0801762

<https://www.phoenixcontact.com/in/products/0801762>



DIN rail, unperforated, acc. to EN 60715, material: Copper, uncoated, Standard profile, color: copper-colored, Pack of 10 (20 m)

---

NS 35/ 7,5 CAP - End cap

1206560

<https://www.phoenixcontact.com/in/products/1206560>

DIN rail end piece, for DIN rail NS 35/7.5



# FT 6-DREHSILA 250 (5X20) - Fuse modular terminal block

3025043

<https://www.phoenixcontact.com/in/products/3025043>

## NS 35/15 PERF 2000MM - DIN rail perforated

1201730

<https://www.phoenixcontact.com/in/products/1201730>



DIN rail perforated, similar to EN 60715, material: Steel, galvanized, passivated with a thick layer, Standard profile, color: silver, Pack of 25 (50 m)

---

## NS 35/15 UNPERF 2000MM - DIN rail, unperforated

1201714

<https://www.phoenixcontact.com/in/products/1201714>



DIN rail, unperforated, similar to EN 60715, material: Steel, galvanized, passivated with a thick layer, Standard profile, color: silver, Pack of 25 (50 m)

# FT 6-DREHSILA 250 (5X20) - Fuse modular terminal block

3025043

<https://www.phoenixcontact.com/in/products/3025043>

## NS 35/15 WH PERF 2000MM - DIN rail perforated

0806602

<https://www.phoenixcontact.com/in/products/0806602>



DIN rail perforated, similar to EN 60715, material: Steel, Galvanized, white passivated, Standard profile, color: white, Pack of 25 (50 m)

---

## NS 35/15 WH UNPERF 2000MM-VPE 10 - DIN rail, unperforated

1204135

<https://www.phoenixcontact.com/in/products/1204135>



DIN rail, unperforated, similar to EN 60715, material: Steel, Galvanized, white passivated, Standard profile, color: silver, Pack of 10 (20 m)

# FT 6-DREHSILA 250 (5X20) - Fuse modular terminal block

3025043

<https://www.phoenixcontact.com/in/products/3025043>

## NS 35/15 AL UNPERF 2000MM - DIN rail, unperforated

1201756

<https://www.phoenixcontact.com/in/products/1201756>



DIN rail, unperforated, similar to EN 60715, material: Aluminum, uncoated, Standard profile, color: silver

---

## NS 35/15 ZN PERF 2000MM - DIN rail perforated

1206599

<https://www.phoenixcontact.com/in/products/1206599>



DIN rail perforated, similar to EN 60715, material: Steel, galvanized, Standard profile, color: silver, Pack of 25 (50 m)

# FT 6-DREHSILA 250 (5X20) - Fuse modular terminal block

3025043

<https://www.phoenixcontact.com/in/products/3025043>

## NS 35/15 ZN UNPERF 2000MM - DIN rail, unperforated

1206586

<https://www.phoenixcontact.com/in/products/1206586>



DIN rail, unperforated, similar to EN 60715, material: Steel, galvanized, Standard profile, color: silver, Pack of 25 (50 m)

---

## NS 35/15 CU UNPERF 2000MM-VPE 10 - DIN rail, unperforated

1201895

<https://www.phoenixcontact.com/in/products/1201895>



DIN rail, unperforated, similar to EN 60715, material: Copper, uncoated, Standard profile, color: copper-colored, Pack of 10 (20 m)

# FT 6-DREHSILA 250 (5X20) - Fuse modular terminal block

3025043

<https://www.phoenixcontact.com/in/products/3025043>

## NS 35/15 CAP - End cap

1206573

<https://www.phoenixcontact.com/in/products/1206573>

DIN rail end piece, for DIN rail NS 35/15



---

## NS 35/15-2,3 UNPERF 2000MM-VPE 10 - DIN rail, unperforated

1201798

<https://www.phoenixcontact.com/in/products/1201798>



DIN rail, unperforated, acc. to EN 60715, material: Steel, galvanized, passivated with a thick layer, Standard profile 2.3 mm, color: silver, Pack of 10 (20 m)

# FT 6-DREHSILA 250 (5X20) - Fuse modular terminal block

3025043

<https://www.phoenixcontact.com/in/products/3025043>

## PS-6 - Test plugs

3030996

<https://www.phoenixcontact.com/in/products/3030996>



Test plugs, Modular test plug, number of positions: 1, color: red

---

## PS-6/2,3MM RD - Test plugs

3038736

<https://www.phoenixcontact.com/in/products/3038736>



Test plugs, number of positions: 1, color: red

# FT 6-DREHSILA 250 (5X20) - Fuse modular terminal block

3025043

<https://www.phoenixcontact.com/in/products/3025043>

## CLIPFIX 35 - End clamp

3022218

<https://www.phoenixcontact.com/in/products/3022218>



Quick mounting end clamp for NS 35/7,5 DIN rail or NS 35/15 DIN rail, with marking option, width: 9.5 mm, color: gray

---

## CLIPFIX 35-5 - End clamp

3022276

<https://www.phoenixcontact.com/in/products/3022276>



Quick mounting end clamp for NS 35/7,5 DIN rail or NS 35/15 DIN rail, with marking option, with parking option for FBS...5, FBS...6, KSS 5, KSS 6, width: 5.15 mm, color: gray



# FT 6-DREHSILA 250 (5X20) - Fuse modular terminal block

3025043

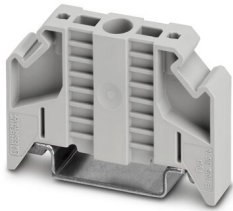
<https://www.phoenixcontact.com/in/products/3025043>

## E/NS 35 N - End clamp

0800886

<https://www.phoenixcontact.com/in/products/0800886>

End clamp, width: 9.5 mm, color: gray



---

## E/UK - End clamp

1201442

<https://www.phoenixcontact.com/in/products/1201442>

End clamp, material: PA, color: gray, Mounting on a DIN rail NS 32 or NS 35



# FT 6-DREHSILA 250 (5X20) - Fuse modular terminal block



3025043

<https://www.phoenixcontact.com/in/products/3025043>

## E/UK 1 - End clamp

1201413

<https://www.phoenixcontact.com/in/products/1201413>



End clamps, for supporting the ends of double-level and three-level terminal blocks, width: 10 mm, color: gray

---

## PAI-4-FIX-5/6 BU - Test adapter

3035975

<https://www.phoenixcontact.com/in/products/3035975>



4 mm test adapter, for terminal blocks with 5.2 mm and 6.2 mm pitch

# FT 6-DREHSILA 250 (5X20) - Fuse modular terminal block

3025043

<https://www.phoenixcontact.com/in/products/3025043>

## PAI-4-FIX-5/6 OG - Test adapter

3035974

<https://www.phoenixcontact.com/in/products/3035974>



4 mm test adapter, for terminal blocks with 5.2 mm and 6.2 mm pitch

---

## PAI-4-FIX-5/6 YE - Test adapter

3035977

<https://www.phoenixcontact.com/in/products/3035977>



4 mm test adapter, for terminal blocks with 5.2 mm and 6.2 mm pitch

# FT 6-DREHSILA 250 (5X20) - Fuse modular terminal block

3025043

<https://www.phoenixcontact.com/in/products/3025043>

## PAI-4-FIX-5/6 RD - Test adapter

3035976

<https://www.phoenixcontact.com/in/products/3035976>



4 mm test adapter, for terminal blocks with 5.2 mm and 6.2 mm pitch

---

## PAI-4-FIX-5/6 GN - Test adapter

3035978

<https://www.phoenixcontact.com/in/products/3035978>



4 mm test adapter, for terminal blocks with 5.2 mm and 6.2 mm pitch

# FT 6-DREHSILA 250 (5X20) - Fuse modular terminal block



3025043

<https://www.phoenixcontact.com/in/products/3025043>

## PAI-4-FIX-5/6 BK - Test adapter

3035980

<https://www.phoenixcontact.com/in/products/3035980>



4 mm test adapter, for terminal blocks with 5.2 mm and 6.2 mm pitch

---

## PAI-4-FIX-5/6 GY - Test adapter

3035982

<https://www.phoenixcontact.com/in/products/3035982>



4 mm test adapter, for terminal blocks with 5.2 mm and 6.2 mm pitch

# FT 6-DREHSILA 250 (5X20) - Fuse modular terminal block



3025043

<https://www.phoenixcontact.com/in/products/3025043>

## PAI-4-FIX-5/6 VT - Test adapter

3035979

<https://www.phoenixcontact.com/in/products/3035979>



4 mm test adapter, for terminal blocks with 5.2 mm and 6.2 mm pitch

---

## PAI-4-FIX-5/6 BN - Test adapter

3035981

<https://www.phoenixcontact.com/in/products/3035981>



4 mm test adapter, for terminal blocks with 5.2 mm and 6.2 mm pitch

# FT 6-DREHSILA 250 (5X20) - Fuse modular terminal block



3025043

<https://www.phoenixcontact.com/in/products/3025043>

## PAI-4-FIX-5/6 WH - Test adapter

3035983

<https://www.phoenixcontact.com/in/products/3035983>



4 mm test adapter, for terminal blocks with 5.2 mm and 6.2 mm pitch

---

## ZBF 12:UNBEDRUCKT - Zack Marker strip, flat

0809735

<https://www.phoenixcontact.com/in/products/0809735>



Zack Marker strip, flat, Strip, white, unlabeled, can be labeled with: PLOTMARK, CMS-P1-PLOTTER, mounting type: snapped, for terminal block width: 12 mm, lettering field size: 5.15 x 12.15 mm, Number of individual labels: 5

# FT 6-DREHSILA 250 (5X20) - Fuse modular terminal block

3025043

<https://www.phoenixcontact.com/in/products/3025043>

## ZBF 12 CUS - Zack Marker strip, flat

0825018

<https://www.phoenixcontact.com/in/products/0825018>



Zack Marker strip, flat, can be ordered: Strip, white, labeled according to customer specifications, mounting type: snap into flat marker groove, for terminal block width: 12 mm, lettering field size: 5.15 x 12.15 mm, Number of individual labels: 5

---

## UC-TMF 12 - Marker for terminal blocks

0819233

<https://www.phoenixcontact.com/in/products/0819233>



Marker for terminal blocks, Sheet, white, unlabeled, can be labeled with: BLUEMARK ID COLOR, BLUEMARK ID, BLUEMARK CLED, PLOTMARK, CMS-P1-PLOTTER, mounting type: snapped, for terminal block width: 12 mm, lettering field size: 11.45 x 5.1 mm, Number of individual labels: 40



# FT 6-DREHSILA 250 (5X20) - Fuse modular terminal block



3025043

<https://www.phoenixcontact.com/in/products/3025043>

## UC-TMF 12 CUS - Marker for terminal blocks

0824670

<https://www.phoenixcontact.com/in/products/0824670>



Marker for terminal blocks, can be ordered: by sheet, white, labeled according to customer specifications, mounting type: snap into flat marker groove, for terminal block width: 12 mm, lettering field size: 11.45 x 5.1 mm, Number of individual labels: 40

---

## UCT-TMF 12 - Marker for terminal blocks

0829214

<https://www.phoenixcontact.com/in/products/0829214>



Marker for terminal blocks, Sheet, white, unlabeled, can be labeled with: TOPMARK NEO, TOPMARK LASER, BLUEMARK ID COLOR, BLUEMARK ID, BLUEMARK CLED, THERMOMARK PRIME, THERMOMARK CARD 2.0, THERMOMARK CARD, mounting type: snapped, for terminal block width: 12 mm, lettering field size: 11.2 x 4.7 mm, Number of individual labels: 30

# FT 6-DREHSILA 250 (5X20) - Fuse modular terminal block



3025043

<https://www.phoenixcontact.com/in/products/3025043>

## UCT-TMF 12 CUS - Marker for terminal blocks

0829686

<https://www.phoenixcontact.com/in/products/0829686>



Marker for terminal blocks, can be ordered: by sheet, white, labeled according to customer specifications, mounting type: snap into flat marker groove, for terminal block width: 12 mm, lettering field size: 11.2 x 4.7 mm, Number of individual labels: 30

---

Phoenix Contact 2023 © - all rights reserved

<https://www.phoenixcontact.com>

PHOENIX CONTACT (I) Pvt. Ltd.

A-58/2, Okhla Industrial Area, Phase - II, New Delhi-110 020

+91.1275.71420

[info@phoenixcontact.co.in](mailto:info@phoenixcontact.co.in)