

FT 6-DREHSI (5X20) - Fuse modular terminal block



3025041

<https://www.phoenixcontact.com/in/products/3025041>

Please be informed that the data shown in this PDF document is generated from our Online Catalog. Please find the complete data in the user documentation. Our General Terms of Use for Downloads are valid.



Fuse modular terminal block, without actuation lever, fuse type: Glass / ceramics / ..., fuse type: G / 5 x 20, nom. voltage: 1000 V, nominal current: 10 A, connection method: Push-in connection, 1 level, Rated cross section: 6 mm², cross section: 0.5 mm²- 10 mm², mounting type: NS 35/7,5, NS 35/15, color: black

Commercial Data

| | |
|--------------------------------------|---------------|
| Item number | 3025041 |
| Packing unit | 25 pc |
| Minimum order quantity | 25 pc |
| Sales Key | BE2 |
| Product Key | BE2235 |
| GTIN | 4055626379395 |
| Weight per Piece (including packing) | 9.99 g |
| Weight per Piece (excluding packing) | 9.99 g |
| Customs tariff number | 85389099 |
| Country of origin | IN |

FT 6-DREHSI (5X20) - Fuse modular terminal block



3025041

<https://www.phoenixcontact.com/in/products/3025041>

Technical Data

Notes

General

| | |
|------|--|
| Note | The current is determined by the fuse used, the voltage by the fuse or selected light indicator. |
|------|--|

Product properties

| | |
|-----------------------|---------------------|
| Product type | Fuse terminal block |
| Number of connections | 2 |
| Number of rows | 1 |
| Potentials | 1 |

Insulation characteristics

| | |
|----------------------|-----|
| Overvoltage category | III |
| Degree of pollution | 3 |

Electrical properties

| | |
|---------------------------|--|
| Fuse type | Glass / ceramics / ... |
| Rated surge voltage | 6 kV |
| Fuse | G / 5 x 20 |
| Maximum power dissipation | max. 1.6 W (with single arrangement of the fuse terminal block in the event of overload) max. 1.6 W (With interconnected arrangement of several fuse terminal blocks in the event of overload) max. 4 W (with single arrangement of the fuse terminal block in the event of a short-circuit) max. 2.5 W (With interconnected arrangement of several fuse terminal blocks in the event of a short-circuit) |

Connection data

| | |
|---------------------------------|-------------------|
| Number of connections per level | 2 |
| Nominal cross section | 6 mm ² |
| Rated cross section AWG | 10 |

1 level

| | |
|---|--|
| Stripping length | 10 mm ... 12 mm |
| Internal cylindrical gage | A5 |
| Connection in acc. with standard | IEC 60947-7-3 |
| Conductor cross section rigid | 0.5 mm ² ... 10 mm ² |
| Cross section AWG | 20 ... 8 (converted acc. to IEC) |
| Conductor cross section flexible | 0.5 mm ² ... 6 mm ² |
| Conductor cross section, flexible [AWG] | 20 ... 10 (converted acc. to IEC) |
| Conductor cross-section flexible (ferrule without plastic sleeve) | 0.5 mm ² ... 6 mm ² |
| Flexible conductor cross section (ferrule with plastic sleeve) | 0.5 mm ² ... 6 mm ² |

FT 6-DREHSI (5X20) - Fuse modular terminal block



3025041

<https://www.phoenixcontact.com/in/products/3025041>

| | |
|---|---|
| Conductor cross-section flexible (2 conductors with the same cross-section, with TWIN ferrule and plastic sleeve) | 0.5 mm ² ... 1.5 mm ² |
| 2 conductors with the same cross section, flexible, with TWIN ferrule with plastic sleeve | 0.5 mm ² ... 1.5 mm ² |
| Nominal current | 10 A |
| Maximum load current | 10 A (the current is determined by the fuse used) |
| Nominal voltage | 1000 V |
| Nominal cross section | 6 mm ² |

1 level Connection cross sections directly pluggable

| | |
|---|--|
| Conductor cross section rigid | 1 mm ² ... 10 mm ² |
| Conductor cross-section flexible (ferrule without plastic sleeve) | 1 mm ² ... 6 mm ² |
| Flexible conductor cross section (ferrule with plastic sleeve) | 1 mm ² ... 6 mm ² |

Dimensions

| | |
|------------------|---------|
| Width | 12.3 mm |
| End cover width | 2.2 mm |
| Height | 49.7 mm |
| Height NS 35/15 | 58.7 mm |
| Height NS 35/7,5 | 51.2 mm |
| Length | 77.7 mm |

Material specifications

| | |
|---|-------------|
| Color | black |
| Flammability rating according to UL 94 | V0 |
| Insulating material group | I |
| Insulating material | PA |
| Static insulating material application in cold | -60 °C |
| Temperature index of insulation material (DIN EN 60216-1 (VDE 0304-21)) | 130 °C |
| Relative insulation material temperature index (Elec., UL 746 B) | 130 °C |
| Fire protection for rail vehicles (DIN EN 45545-2) R22 | HL 1 - HL 3 |
| Fire protection for rail vehicles (DIN EN 45545-2) R23 | HL 1 - HL 3 |
| Fire protection for rail vehicles (DIN EN 45545-2) R24 | HL 1 - HL 3 |
| Fire protection for rail vehicles (DIN EN 45545-2) R26 | HL 1 - HL 3 |
| Calorimetric heat release NFPA 130 (ASTM E 1354) | 28 MJ/kg |
| Surface flammability NFPA 130 (ASTM E 162) | passed |
| Specific optical density of smoke NFPA 130 (ASTM E 662) | passed |
| Smoke gas toxicity NFPA 130 (SMP 800C) | passed |

Mechanical properties

Mechanical data

| | |
|-----------------|----|
| Open side panel | No |
|-----------------|----|

Environmental and real-life conditions

FT 6-DREHSI (5X20) - Fuse modular terminal block



3025041

<https://www.phoenixcontact.com/in/products/3025041>

Oscillation/broadband noise

| | |
|------------------------|--|
| Specification | DIN EN 50155 (VDE 0115-200):2008-03 |
| Spectrum | Service life test category 2, bogie-mounted |
| Frequency | $f_1 = 5 \text{ Hz}$ to $f_2 = 250 \text{ Hz}$ |
| ASD level | 6.12 (m/s ²) ² /Hz |
| Acceleration | 3.12g |
| Test duration per axis | 5 h |
| Test directions | X-, Y- and Z-axis |
| Result | Test passed |

Shocks

| | |
|--------------------------------|-------------------------------------|
| Specification | DIN EN 50155 (VDE 0115-200):2008-03 |
| Pulse shape | Half-sine |
| Acceleration | 30g |
| Shock duration | 18 ms |
| Number of shocks per direction | 3 |
| Test directions | X-, Y- and Z-axis (pos. and neg.) |
| Result | Test passed |

Ambient conditions

| | |
|--|---|
| Ambient temperature (operation) | -60 °C ... 105 °C (max. short-term operating temperature RTI Elec.) |
| Ambient temperature (storage/transport) | -25 °C ... 60 °C (for a short time, not exceeding 24 h, -60 °C to +70 °C) |
| Ambient temperature (assembly) | -5 °C ... 70 °C |
| Ambient temperature (actuation) | -5 °C ... 70 °C |
| Permissible humidity (storage/transport) | 30 % ... 70 % |

Standards and regulations

| | |
|----------------------------------|---------------|
| Connection in acc. with standard | IEC 60947-7-3 |
|----------------------------------|---------------|

Mounting

| | |
|---------------|-----------|
| Mounting type | NS 35/7,5 |
| | NS 35/15 |

FT 6-DREHSI (5X20) - Fuse modular terminal block

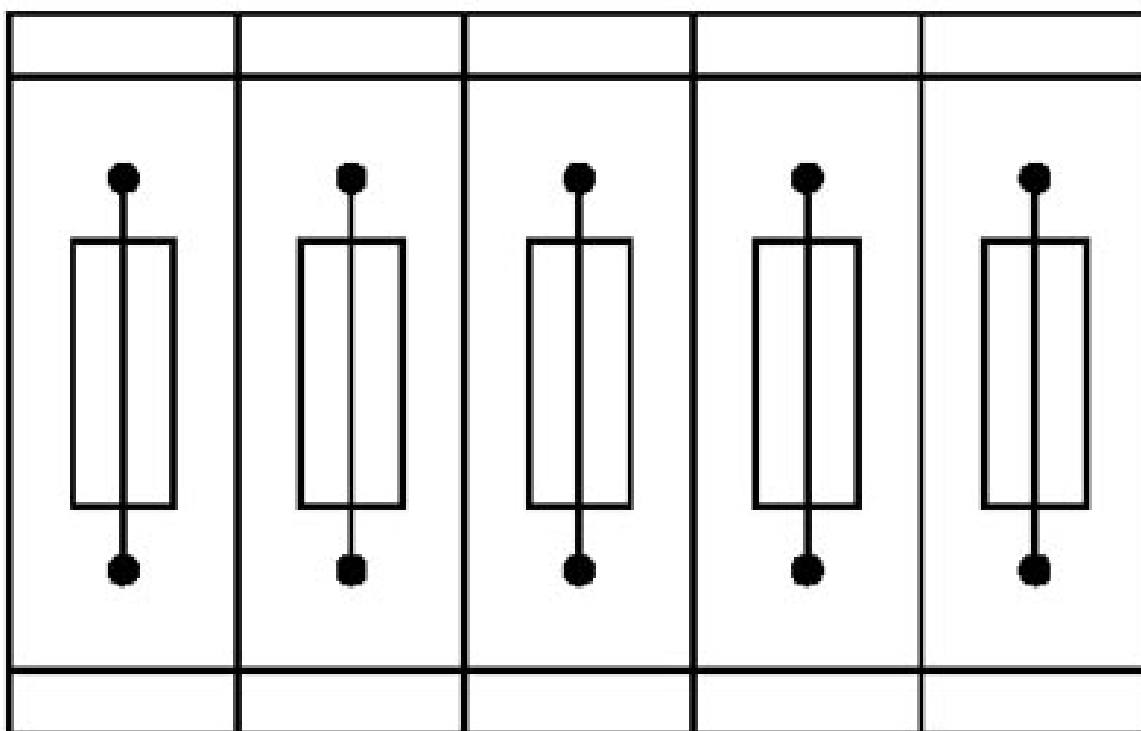


3025041

<https://www.phoenixcontact.com/in/products/3025041>

Drawings

Application drawing



Fuse terminal blocks in interconnected arrangement,
block consisting of 5 fuse terminal blocks

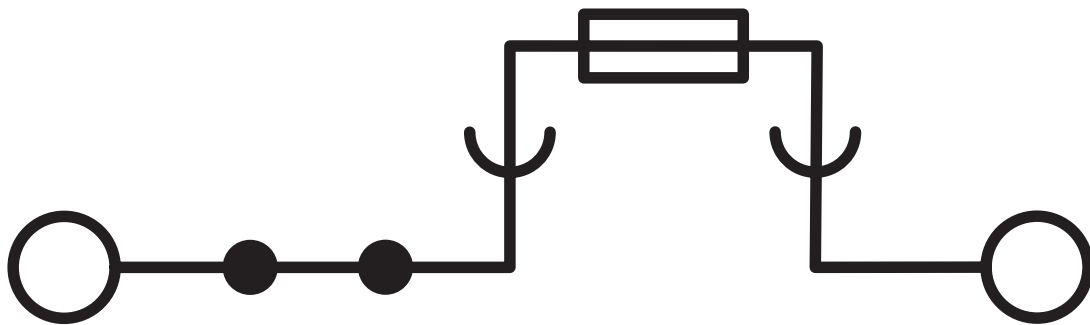
FT 6-DREHSI (5X20) - Fuse modular terminal block



3025041

<https://www.phoenixcontact.com/in/products/3025041>

Circuit diagram



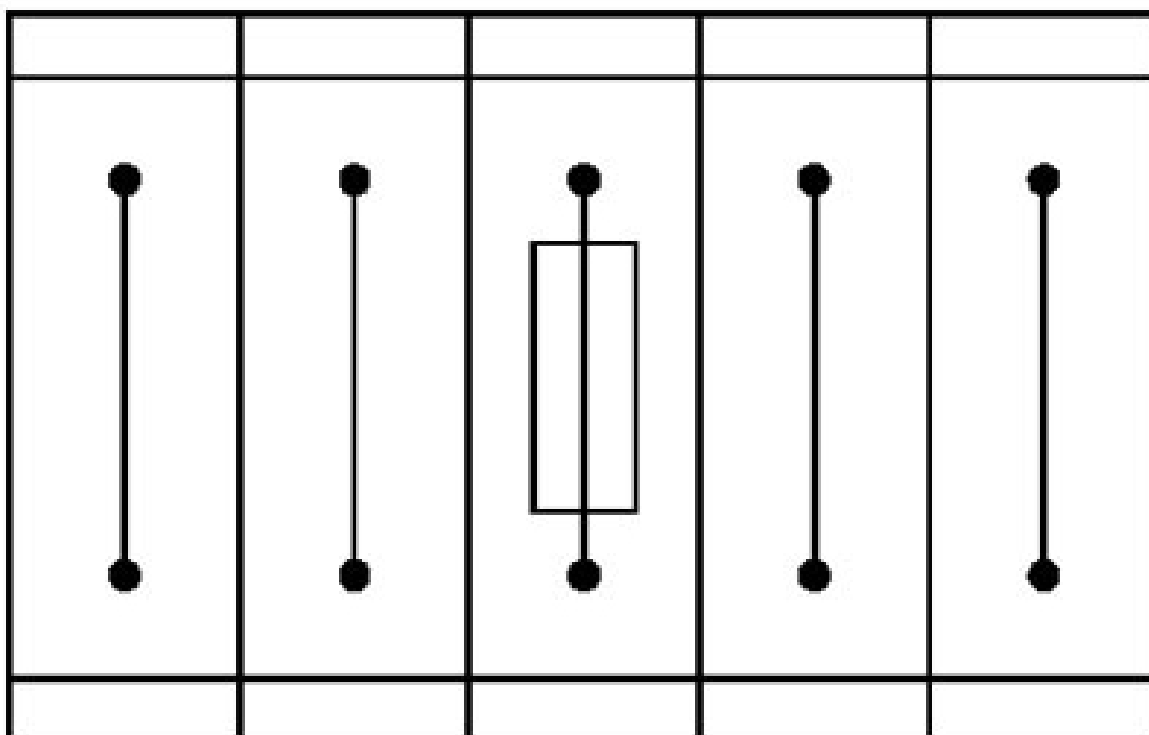
FT 6-DREHSI (5X20) - Fuse modular terminal block



3025041

<https://www.phoenixcontact.com/in/products/3025041>

Application drawing



Fuse terminal block in single arrangement,
block consisting of one fuse terminal block and 4 feed-through terminal blocks

FT 6-DREHSI (5X20) - Fuse modular terminal block




3025041

<https://www.phoenixcontact.com/in/products/3025041>

Approvals

|  IECEE CB Scheme Approval ID: NL-50196 | | | | |
|---|-----------------------|-----------------------|-------------------|-----------------------------|
| | Nominal Voltage U_N | Nominal Current I_N | Cross Section AWG | Cross Section mm^2 |
| | 1000 V | 10 A | - | - |

|  cULus Recognized Approval ID: E60425 | | | | |
|--|-----------------------|-----------------------|-------------------|-----------------------------|
| | Nominal Voltage U_N | Nominal Current I_N | Cross Section AWG | Cross Section mm^2 |
| Use group B | 600 V | 10 A | 20 - 8 | - |
| Use group C | 600 V | 10 A | 20 - 8 | - |

FT 6-DREHSI (5X20) - Fuse modular terminal block



3025041

<https://www.phoenixcontact.com/in/products/3025041>

Classifications

ECLASS

| | |
|-------------|----------|
| ECLASS-11.0 | 27141116 |
| ECLASS-12.0 | 27141116 |
| ECLASS-13.0 | 27250113 |

ETIM

| | |
|----------|----------|
| ETIM 7.0 | EC000899 |
|----------|----------|

FT 6-DREHSI (5X20) - Fuse modular terminal block



3025041

<https://www.phoenixcontact.com/in/products/3025041>

Environmental Product Compliance

| | |
|------------|--|
| REACH SVHC | Lead 7439-92-1 |
| China RoHS | Environmentally Friendly Use Period = 50 years |
| | For information on hazardous substances, refer to the manufacturer's declaration available under "Downloads" |

FT 6-DREHSI (5X20) - Fuse modular terminal block



3025041

<https://www.phoenixcontact.com/in/products/3025041>

Accessories

FBS 2-6 - Plug-in bridge

3030336

<https://www.phoenixcontact.com/in/products/3030336>



Plug-in bridge, pitch: 6.2 mm, number of positions: 2, color: red

FBS 2-6 GY - Plug-in bridge

3032237

<https://www.phoenixcontact.com/in/products/3032237>



Plug-in bridge, pitch: 6.2 mm, number of positions: 2, color: gray

FT 6-DREHSI (5X20) - Fuse modular terminal block

3025041

<https://www.phoenixcontact.com/in/products/3025041>



FBS 2-6 BU - Plug-in bridge

3036932

<https://www.phoenixcontact.com/in/products/3036932>



Plug-in bridge, pitch: 6.2 mm, number of positions: 2, color: blue

SZF 2-0,8X4,0 - Screwdriver

1204520

<https://www.phoenixcontact.com/in/products/1204520>



Actuation tool, for ST terminal blocks, also suitable for use as a bladed screwdriver, size: 0.8 x 4.0 x 100 mm, 2-component grip, with non-slip grip

FT 6-DREHSI (5X20) - Fuse modular terminal block



3025041

<https://www.phoenixcontact.com/in/products/3025041>

ST-BW - Actuation tool

1207608

<https://www.phoenixcontact.com/in/products/1207608>

Actuation tool, for all 2.5 mm² - 4.0 mm² spring-cages



NS 35/ 7,5 PERF 2000MM - DIN rail perforated

0801733

<https://www.phoenixcontact.com/in/products/0801733>



DIN rail perforated, acc. to EN 60715, material: Steel, galvanized, passivated with a thick layer, Standard profile, color: silver, Pack of 25 (50 m)

FT 6-DREHSI (5X20) - Fuse modular terminal block

3025041

<https://www.phoenixcontact.com/in/products/3025041>



NS 35/ 7,5 UNPERF 2000MM - DIN rail, unperforated

0801681

<https://www.phoenixcontact.com/in/products/0801681>



DIN rail, unperforated, acc. to EN 60715, material: Steel, galvanized, passivated with a thick layer, Standard profile, color: silver, Pack of 25 (50 m)

NS 35/ 7,5 WH PERF 2000MM - DIN rail perforated

1204119

<https://www.phoenixcontact.com/in/products/1204119>



DIN rail perforated, acc. to EN 60715, material: Steel, Galvanized, white passivated, Standard profile, color: silver, Pack of 25 (50 m)

FT 6-DREHSI (5X20) - Fuse modular terminal block



3025041

<https://www.phoenixcontact.com/in/products/3025041>

NS 35/ 7,5 WH UNPERF 2000MM-VPE 10 - DIN rail, unperforated

1204122

<https://www.phoenixcontact.com/in/products/1204122>



DIN rail, unperforated, acc. to EN 60715, material: Steel, Galvanized, white passivated, Standard profile, color: silver, Pack of 10 (20 m)

NS 35/ 7,5 AL UNPERF 2000MM - DIN rail, unperforated

0801704

<https://www.phoenixcontact.com/in/products/0801704>



DIN rail, unperforated, acc. to EN 60715, material: Aluminum, uncoated, Standard profile, color: silver, Pack of 25 (50 m)

FT 6-DREHSI (5X20) - Fuse modular terminal block

3025041

<https://www.phoenixcontact.com/in/products/3025041>

NS 35/ 7,5 ZN PERF 2000MM - DIN rail perforated

1206421

<https://www.phoenixcontact.com/in/products/1206421>



DIN rail perforated, acc. to EN 60715, material: Steel, galvanized, Standard profile, color: silver, Pack of 25 (50 m)

NS 35/ 7,5 ZN UNPERF 2000MM - DIN rail, unperforated

1206434

<https://www.phoenixcontact.com/in/products/1206434>



DIN rail, unperforated, acc. to EN 60715, material: Steel, galvanized, Standard profile, color: silver, Pack of 25 (50 m)

FT 6-DREHSI (5X20) - Fuse modular terminal block



3025041

<https://www.phoenixcontact.com/in/products/3025041>

NS 35/ 7,5 CU UNPERF 2000MM-VPE 10 - DIN rail, unperforated

0801762

<https://www.phoenixcontact.com/in/products/0801762>



DIN rail, unperforated, acc. to EN 60715, material: Copper, uncoated, Standard profile, color: copper-colored, Pack of 10 (20 m)

NS 35/ 7,5 CAP - End cap

1206560

<https://www.phoenixcontact.com/in/products/1206560>

DIN rail end piece, for DIN rail NS 35/7.5



FT 6-DREHSI (5X20) - Fuse modular terminal block



3025041

<https://www.phoenixcontact.com/in/products/3025041>

NS 35/15 PERF 2000MM - DIN rail perforated

1201730

<https://www.phoenixcontact.com/in/products/1201730>



DIN rail perforated, similar to EN 60715, material: Steel, galvanized, passivated with a thick layer, Standard profile, color: silver, Pack of 25 (50 m)

NS 35/15 UNPERF 2000MM - DIN rail, unperforated

1201714

<https://www.phoenixcontact.com/in/products/1201714>



DIN rail, unperforated, similar to EN 60715, material: Steel, galvanized, passivated with a thick layer, Standard profile, color: silver, Pack of 25 (50 m)

FT 6-DREHSI (5X20) - Fuse modular terminal block

3025041

<https://www.phoenixcontact.com/in/products/3025041>



NS 35/15 WH PERF 2000MM - DIN rail perforated

0806602

<https://www.phoenixcontact.com/in/products/0806602>



DIN rail perforated, similar to EN 60715, material: Steel, Galvanized, white passivated, Standard profile, color: white, Pack of 25 (50 m)

NS 35/15 WH UNPERF 2000MM-VPE 10 - DIN rail, unperforated

1204135

<https://www.phoenixcontact.com/in/products/1204135>



DIN rail, unperforated, similar to EN 60715, material: Steel, Galvanized, white passivated, Standard profile, color: silver, Pack of 10 (20 m)

FT 6-DREHSI (5X20) - Fuse modular terminal block



3025041

<https://www.phoenixcontact.com/in/products/3025041>

NS 35/15 AL UNPERF 2000MM - DIN rail, unperforated

1201756

<https://www.phoenixcontact.com/in/products/1201756>



DIN rail, unperforated, similar to EN 60715, material: Aluminum, uncoated, Standard profile, color: silver

NS 35/15 ZN PERF 2000MM - DIN rail perforated

1206599

<https://www.phoenixcontact.com/in/products/1206599>



DIN rail perforated, similar to EN 60715, material: Steel, galvanized, Standard profile, color: silver, Pack of 25 (50 m)

FT 6-DREHSI (5X20) - Fuse modular terminal block



3025041

<https://www.phoenixcontact.com/in/products/3025041>

NS 35/15 ZN UNPERF 2000MM - DIN rail, unperforated

1206586

<https://www.phoenixcontact.com/in/products/1206586>



DIN rail, unperforated, similar to EN 60715, material: Steel, galvanized, Standard profile, color: silver, Pack of 25 (50 m)

NS 35/15 CU UNPERF 2000MM-VPE 10 - DIN rail, unperforated

1201895

<https://www.phoenixcontact.com/in/products/1201895>



DIN rail, unperforated, similar to EN 60715, material: Copper, uncoated, Standard profile, color: copper-colored, Pack of 10 (20 m)

FT 6-DREHSI (5X20) - Fuse modular terminal block



3025041

<https://www.phoenixcontact.com/in/products/3025041>

NS 35/15 CAP - End cap

1206573

<https://www.phoenixcontact.com/in/products/1206573>

DIN rail end piece, for DIN rail NS 35/15



NS 35/15-2,3 UNPERF 2000MM-VPE 10 - DIN rail, unperforated

1201798

<https://www.phoenixcontact.com/in/products/1201798>



DIN rail, unperforated, acc. to EN 60715, material: Steel, galvanized, passivated with a thick layer, Standard profile 2.3 mm, color: silver, Pack of 10 (20 m)

FT 6-DREHSI (5X20) - Fuse modular terminal block



3025041

<https://www.phoenixcontact.com/in/products/3025041>

PS-6 - Test plugs

3030996

<https://www.phoenixcontact.com/in/products/3030996>



Test plugs, Modular test plug, number of positions: 1, color: red

PS-6/2,3MM RD - Test plugs

3038736

<https://www.phoenixcontact.com/in/products/3038736>



Test plugs, number of positions: 1, color: red

FT 6-DREHSI (5X20) - Fuse modular terminal block



3025041

<https://www.phoenixcontact.com/in/products/3025041>

CLIPFIX 35 - End clamp

3022218

<https://www.phoenixcontact.com/in/products/3022218>



Quick mounting end clamp for NS 35/7,5 DIN rail or NS 35/15 DIN rail, with marking option, width: 9.5 mm, color: gray

CLIPFIX 35-5 - End clamp

3022276

<https://www.phoenixcontact.com/in/products/3022276>



Quick mounting end clamp for NS 35/7,5 DIN rail or NS 35/15 DIN rail, with marking option, with parking option for FBS...5, FBS...6, KSS 5, KSS 6, width: 5.15 mm, color: gray

FT 6-DREHSI (5X20) - Fuse modular terminal block



3025041

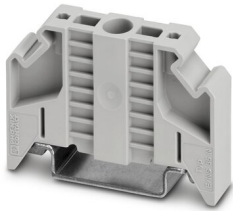
<https://www.phoenixcontact.com/in/products/3025041>

E/NS 35 N - End clamp

0800886

<https://www.phoenixcontact.com/in/products/0800886>

End clamp, width: 9.5 mm, color: gray

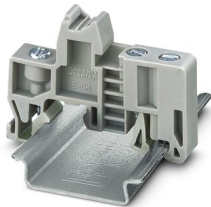


E/UK - End clamp

1201442

<https://www.phoenixcontact.com/in/products/1201442>

End clamp, material: PA, color: gray, Mounting on a DIN rail NS 32 or NS 35



FT 6-DREHSI (5X20) - Fuse modular terminal block



3025041

<https://www.phoenixcontact.com/in/products/3025041>

E/UK 1 - End clamp

1201413

<https://www.phoenixcontact.com/in/products/1201413>



End clamps, for supporting the ends of double-level and three-level terminal blocks, width: 10 mm, color: gray

PAI-4-FIX-5/6 BU - Test adapter

3035975

<https://www.phoenixcontact.com/in/products/3035975>



4 mm test adapter, for terminal blocks with 5.2 mm and 6.2 mm pitch

FT 6-DREHSI (5X20) - Fuse modular terminal block



3025041

<https://www.phoenixcontact.com/in/products/3025041>

PAI-4-FIX-5/6 OG - Test adapter

3035974

<https://www.phoenixcontact.com/in/products/3035974>



4 mm test adapter, for terminal blocks with 5.2 mm and 6.2 mm pitch

PAI-4-FIX-5/6 YE - Test adapter

3035977

<https://www.phoenixcontact.com/in/products/3035977>



4 mm test adapter, for terminal blocks with 5.2 mm and 6.2 mm pitch

FT 6-DREHSI (5X20) - Fuse modular terminal block

3025041

<https://www.phoenixcontact.com/in/products/3025041>

PAI-4-FIX-5/6 RD - Test adapter

3035976

<https://www.phoenixcontact.com/in/products/3035976>



4 mm test adapter, for terminal blocks with 5.2 mm and 6.2 mm pitch

PAI-4-FIX-5/6 GN - Test adapter

3035978

<https://www.phoenixcontact.com/in/products/3035978>



4 mm test adapter, for terminal blocks with 5.2 mm and 6.2 mm pitch

FT 6-DREHSI (5X20) - Fuse modular terminal block



3025041

<https://www.phoenixcontact.com/in/products/3025041>

PAI-4-FIX-5/6 BK - Test adapter

3035980

<https://www.phoenixcontact.com/in/products/3035980>



4 mm test adapter, for terminal blocks with 5.2 mm and 6.2 mm pitch

PAI-4-FIX-5/6 GY - Test adapter

3035982

<https://www.phoenixcontact.com/in/products/3035982>



4 mm test adapter, for terminal blocks with 5.2 mm and 6.2 mm pitch

FT 6-DREHSI (5X20) - Fuse modular terminal block



3025041

<https://www.phoenixcontact.com/in/products/3025041>

PAI-4-FIX-5/6 VT - Test adapter

3035979

<https://www.phoenixcontact.com/in/products/3035979>



4 mm test adapter, for terminal blocks with 5.2 mm and 6.2 mm pitch

PAI-4-FIX-5/6 BN - Test adapter

3035981

<https://www.phoenixcontact.com/in/products/3035981>



4 mm test adapter, for terminal blocks with 5.2 mm and 6.2 mm pitch

FT 6-DREHSI (5X20) - Fuse modular terminal block



3025041

<https://www.phoenixcontact.com/in/products/3025041>

PAI-4-FIX-5/6 WH - Test adapter

3035983

<https://www.phoenixcontact.com/in/products/3035983>



4 mm test adapter, for terminal blocks with 5.2 mm and 6.2 mm pitch

ZBF 12:UNBEDRUCKT - Zack Marker strip, flat

0809735

<https://www.phoenixcontact.com/in/products/0809735>



Zack Marker strip, flat, Strip, white, unlabeled, can be labeled with: PLOTMARK, CMS-P1-PLOTTER, mounting type: snapped, for terminal block width: 12 mm, lettering field size: 5.15 x 12.15 mm, Number of individual labels: 5

FT 6-DREHSI (5X20) - Fuse modular terminal block



3025041

<https://www.phoenixcontact.com/in/products/3025041>

ZBF 12 CUS - Zack Marker strip, flat

0825018

<https://www.phoenixcontact.com/in/products/0825018>



Zack Marker strip, flat, can be ordered: Strip, white, labeled according to customer specifications, mounting type: snap into flat marker groove, for terminal block width: 12 mm, lettering field size: 5.15 x 12.15 mm, Number of individual labels: 5

UC-TMF 12 - Marker for terminal blocks

0819233

<https://www.phoenixcontact.com/in/products/0819233>



Marker for terminal blocks, Sheet, white, unlabeled, can be labeled with: BLUEMARK ID COLOR, BLUEMARK ID, BLUEMARK CLED, PLOTMARK, CMS-P1-PLOTTER, mounting type: snapped, for terminal block width: 12 mm, lettering field size: 11.45 x 5.1 mm, Number of individual labels: 40

FT 6-DREHSI (5X20) - Fuse modular terminal block



3025041

<https://www.phoenixcontact.com/in/products/3025041>

UC-TMF 12 CUS - Marker for terminal blocks

0824670

<https://www.phoenixcontact.com/in/products/0824670>



Marker for terminal blocks, can be ordered: by sheet, white, labeled according to customer specifications, mounting type: snap into flat marker groove, for terminal block width: 12 mm, lettering field size: 11.45 x 5.1 mm, Number of individual labels: 40

UCT-TMF 12 - Marker for terminal blocks

0829214

<https://www.phoenixcontact.com/in/products/0829214>



Marker for terminal blocks, Sheet, white, unlabeled, can be labeled with: TOPMARK NEO, TOPMARK LASER, BLUEMARK ID COLOR, BLUEMARK ID, BLUEMARK CLED, THERMOMARK PRIME, THERMOMARK CARD 2.0, THERMOMARK CARD, mounting type: snapped, for terminal block width: 12 mm, lettering field size: 11.2 x 4.7 mm, Number of individual labels: 30

FT 6-DREHSI (5X20) - Fuse modular terminal block



3025041

<https://www.phoenixcontact.com/in/products/3025041>

UCT-TMF 12 CUS - Marker for terminal blocks

0829686

<https://www.phoenixcontact.com/in/products/0829686>



Marker for terminal blocks, can be ordered: by sheet, white, labeled according to customer specifications, mounting type: snap into flat marker groove, for terminal block width: 12 mm, lettering field size: 11.2 x 4.7 mm, Number of individual labels: 30

Phoenix Contact 2023 © - all rights reserved

<https://www.phoenixcontact.com>

PHOENIX CONTACT (I) Pvt. Ltd.

A-58/2, Okhla Industrial Area, Phase - II, New Delhi-110 020

+91.1275.71420

info@phoenixcontact.co.in