

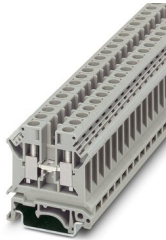
# UK 6 N - Feed-through terminal block



3004524

<https://www.phoenixcontact.com/in/products/3004524>

Please be informed that the data shown in this PDF document is generated from our Online Catalog. Please find the complete data in the user documentation. Our General Terms of Use for Downloads are valid.



Feed-through terminal block, nom. voltage: 800 V, nominal current: 41 A, number of connections: 2, connection method: Screw connection, Rated cross section: 6 mm<sup>2</sup>, cross section: 0.2 mm<sup>2</sup> - 10 mm<sup>2</sup>, mounting type: NS 35/7,5, NS 35/15, NS 32, color: gray

## Your advantages

- All universal terminal blocks in the UK... series can also be used in the Ex e area according to IEC/EN 60079 as standard
- The corresponding EC-type examination numbers for Ex approval can be found in the technical connection data

## Commercial Data

Item number	3004524
Packing unit	50 pc
Minimum order quantity	50 pc
Sales Key	BE1
Product Key	BE1211
Catalog Page	Page 460 (C-1-2019)
GTIN	4017918090821
Weight per Piece (including packing)	13.49 g
Weight per Piece (excluding packing)	13.014 g
Customs tariff number	85369010
Country of origin	IN

# UK 6 N - Feed-through terminal block



3004524

<https://www.phoenixcontact.com/in/products/3004524>

## Technical Data

### Product properties

Product type	Feed-through terminal block
Number of connections	2
Number of rows	1
Potentials	1

### Insulation characteristics

Overvoltage category	III
Degree of pollution	3

### Electrical properties

Rated surge voltage	8 kV
Maximum power dissipation for nominal condition	1.31 W

### Connection data

Number of connections per level	2
Nominal cross section	6 mm <sup>2</sup>

### Level 1 above 1 below 1

Screw thread	M4
Tightening torque	1.5 ... 1.8 Nm
Stripping length	10 mm
Internal cylindrical gage	A5
Connection in acc. with standard	IEC 60947-7-1
Conductor cross section rigid	0.2 mm <sup>2</sup> ... 10 mm <sup>2</sup>
Cross section AWG	24 ... 8 (converted acc. to IEC)
Conductor cross section flexible	0.2 mm <sup>2</sup> ... 6 mm <sup>2</sup>
Conductor cross section, flexible [AWG]	24 ... 12 (converted acc. to IEC)
Conductor cross-section flexible (ferrule without plastic sleeve)	0.25 mm <sup>2</sup> ... 6 mm <sup>2</sup>
Flexible conductor cross section (ferrule with plastic sleeve)	0.25 mm <sup>2</sup> ... 6 mm <sup>2</sup>
Cross-section with insertion bridge, rigid	4 mm <sup>2</sup>
Cross-section with insertion bridge, flexible	4 mm <sup>2</sup>
2 conductors with same cross section, solid	0.2 mm <sup>2</sup> ... 2.5 mm <sup>2</sup>
2 conductors with same cross section, flexible	0.2 mm <sup>2</sup> ... 2.5 mm <sup>2</sup>
2 conductors with same cross section, flexible, with ferrule without plastic sleeve	0.25 mm <sup>2</sup> ... 1.5 mm <sup>2</sup>
2 conductors with the same cross section, flexible, with TWIN ferrule with plastic sleeve	0.5 mm <sup>2</sup> ... 4 mm <sup>2</sup>
Nominal current	41 A
Maximum load current	57 A (with 10 mm <sup>2</sup> conductor cross section)
Nominal voltage	800 V
Nominal cross section	6 mm <sup>2</sup>

# UK 6 N - Feed-through terminal block



3004524

<https://www.phoenixcontact.com/in/products/3004524>

## Ex data

### Rated data (ATEX/IECEx)

Identification	□ II 2 GD Ex eb IIC Gb
Operating temperature range	-60 °C ... 110 °C
Ex-certified accessories	3003020 D-UK 4/10
	3006027 D-UK 16
	3003224 ATP-UK
	1205066 SZS 1,0X4,0 VDE
	1201442 E/UK
List of bridges	Fixed bridge / FB 2- 8-EX / 3029224
	Fixed bridge / FB 10- 8-EX / 3003185
Bridge data	37.5 A / 6 mm <sup>2</sup>
List of bridges	Fixed bridge / FBI 10- 8-EX / 0711700
Bridge data	39.5 A / 6 mm <sup>2</sup>
Ex temperature increase	40 K (47 A / 6 mm <sup>2</sup> )
Rated voltage	690 V
for bridging with bridge	690 V
Rated insulation voltage	630 V
output	(Permanent)

### Ex level General

Rated current	41 A
Maximum load current	51 A
Contact resistance	0.16 mΩ

### Ex connection data General

Torque range	1.5 Nm ... 1.8 Nm
Nominal cross section	6 mm <sup>2</sup>
Rated cross section AWG	10
Connection capacity rigid	0.2 mm <sup>2</sup> ... 10 mm <sup>2</sup>
Connection capacity AWG	24 ... 8
Connection capacity flexible	0.2 mm <sup>2</sup> ... 6 mm <sup>2</sup>
Connection capacity AWG	24 ... 10
2 conductors with same cross section, solid	0.2 mm <sup>2</sup> ... 1.5 mm <sup>2</sup>
2 conductors with the same cross-section AWG rigid	24 ... 16
2 conductors with same cross section, stranded	0.2 mm <sup>2</sup> ... 1.5 mm <sup>2</sup>
2 conductors with the same cross-section AWG flexible	24 ... 16

## Dimensions

Width	8.2 mm
End cover width	1.8 mm
Height NS 35/15	54.5 mm
Height NS 35/7,5	47 mm
Height	1.85 "

# UK 6 N - Feed-through terminal block



3004524

<https://www.phoenixcontact.com/in/products/3004524>

Height NS 32	52 mm
Length	42.5 mm

## Material specifications

Color	gray
Flammability rating according to UL 94	V0
Insulating material group	I
Insulating material	PA
Static insulating material application in cold	-60 °C
Temperature index of insulation material (DIN EN 60216-1 (VDE 0304-21))	130 °C
Relative insulation material temperature index (Elec., UL 746 B)	130 °C
Fire protection for rail vehicles (DIN EN 45545-2) R22	HL 1 - HL 3
Fire protection for rail vehicles (DIN EN 45545-2) R23	HL 1 - HL 3
Fire protection for rail vehicles (DIN EN 45545-2) R24	HL 1 - HL 3
Fire protection for rail vehicles (DIN EN 45545-2) R26	HL 1 - HL 3
Calorimetric heat release NFPA 130 (ASTM E 1354)	28 MJ/kg
Surface flammability NFPA 130 (ASTM E 162)	passed
Specific optical density of smoke NFPA 130 (ASTM E 662)	passed
Smoke gas toxicity NFPA 130 (SMP 800C)	passed

## Electrical tests

### Surge voltage test

Test voltage setpoint	9.8 kV
Result	Test passed

### Temperature-rise test

Requirement temperature-rise test	Increase in temperature $\leq$ 45 K
Result	Test passed
Short-time withstand current 6 mm <sup>2</sup>	0.72 kA
Result	Test passed

### Power-frequency withstand voltage

Test voltage setpoint	2 kV
Result	Test passed

## Mechanical properties

### Mechanical data

Open side panel	Yes
-----------------	-----

## Mechanical tests

### Mechanical strength

Result	Test passed
--------	-------------

### Attachment on the carrier

# UK 6 N - Feed-through terminal block



3004524

<https://www.phoenixcontact.com/in/products/3004524>

DIN rail/fixing support	NS 32/NS 35
Test force setpoint	5 N
Result	Test passed

## Environmental and real-life conditions

### Needle-flame test

Time of exposure	30 s
Result	Test passed

### Ambient conditions

Ambient temperature (operation)	-60 °C ... 105 °C (max. short-term operating temperature RTI Elec.)
Ambient temperature (storage/transport)	-25 °C ... 60 °C (for a short time, not exceeding 24 h, -60 °C to +70 °C)
Ambient temperature (assembly)	-5 °C ... 70 °C
Ambient temperature (actuation)	-5 °C ... 70 °C
Permissible humidity (storage/transport)	30 % ... 70 %

## Standards and regulations

Connection in acc. with standard	IEC 60947-7-1
----------------------------------	---------------

## Mounting

Mounting type	NS 35/7,5
	NS 35/15
	NS 32

# UK 6 N - Feed-through terminal block

3004524

<https://www.phoenixcontact.com/in/products/3004524>



## Drawings

### Circuit diagram




# UK 6 N - Feed-through terminal block





3004524


<https://www.phoenixcontact.com/in/products/3004524>


## Approvals

 <b>CSA</b> Approval ID: 13631				
	Nominal Voltage $U_N$	Nominal Current $I_N$	Cross Section AWG	Cross Section $\text{mm}^2$
	600 V	50 A	26 - 8	-

 <b>IECEE CB Scheme</b> Approval ID: NL-65053				
	Nominal Voltage $U_N$	Nominal Current $I_N$	Cross Section AWG	Cross Section $\text{mm}^2$
	800 V	41 A	-	- 6

 <b>cULus Recognized</b> Approval ID: E60425				
	Nominal Voltage $U_N$	Nominal Current $I_N$	Cross Section AWG	Cross Section $\text{mm}^2$
Use group B				
	600 V	50 A	26 - 8	-
Multi-conductor connection	600 V	50 A	18 - 12	-
Use group C				
	600 V	50 A	26 - 8	-
Multi-conductor connection	600 V	50 A	18 - 12	-
Use group F				
	800 V	50 A	26 - 8	-
Multi-conductor connection	800 V	50 A	18 - 12	-

 <b>KEMA-KEUR</b> Approval ID: 71-119849				
	Nominal Voltage $U_N$	Nominal Current $I_N$	Cross Section AWG	Cross Section $\text{mm}^2$
	800 V	41 A	-	- 6

 <b>LR</b> Approval ID: 96/20013				
	Nominal Voltage $U_N$	Nominal Current $I_N$	Cross Section AWG	Cross Section $\text{mm}^2$
	800 V	41 A	-	- 6

 <b>KR</b> Approval ID: HMB17372-EL001				
--	--	--	--	--

# UK 6 N - Feed-through terminal block



3004524

<https://www.phoenixcontact.com/in/products/3004524>



**NK**  
Approval ID: 09 ME 141



**RS**  
Approval ID: 22.44.01.00083.250



**ATEX**  
Approval ID: KEMA98ATEX1651U



**cUL Recognized**  
Approval ID: E192998

	Nominal Voltage $U_N$	Nominal Current $I_N$	Cross Section AWG	Cross Section $\text{mm}^2$
	600 V	50 A	26 - 8	-



**EAC Ex**  
Approval ID: RU C-DE.HA91.B.00066



**GL**  
Approval ID: 98876-96 HH

	Nominal Voltage $U_N$	Nominal Current $I_N$	Cross Section AWG	Cross Section $\text{mm}^2$
EEx e II part certificate	690 V	43.5 A	-	- 6



**IEC Ex**  
Approval ID: IECEx KEM 06.0034U



**UL Recognized**  
Approval ID: E192998

	Nominal Voltage $U_N$	Nominal Current $I_N$	Cross Section AWG	Cross Section $\text{mm}^2$
	600 V	50 A	26 - 8	-



**CCC**  
Approval ID: 2020322313000623



**NEPSI**  
Approval ID: GYJ20.1195U



**DNV GL-EX**



# UK 6 N - Feed-through terminal block



3004524

<https://www.phoenixcontact.com/in/products/3004524>

Approval ID: TAE00003K6				
	Nominal Voltage $U_N$	Nominal Current $I_N$	Cross Section AWG	Cross Section $\text{mm}^2$
EEx e II part certificate	440 V	32 A	-	- 2.5

# UK 6 N - Feed-through terminal block



3004524

<https://www.phoenixcontact.com/in/products/3004524>

## Classifications

### ECLASS

ECLASS-11.0

27141120

### ETIM

ETIM 8.0

EC000897

### UNSPSC

UNSPSC 21.0

39121400

# UK 6 N - Feed-through terminal block

3004524

<https://www.phoenixcontact.com/in/products/3004524>



## Environmental Product Compliance

China RoHS	Environmentally friendly use period: unlimited = EFUP-e
	No hazardous substances above threshold values

# UK 6 N - Feed-through terminal block

3004524

<https://www.phoenixcontact.com/in/products/3004524>



## Accessories

**i** Note: Applying some accessories below might limit this product.

### SB 2- 8/13 N - Switching jumper

0200062

<https://www.phoenixcontact.com/in/products/0200062>



Switching jumper, pitch: 13 mm, number of positions: 2, color: silver

**i** Max. current carrying capacity: 40 A

---

### ISSBI 10- 8 - Bridge

0301534

<https://www.phoenixcontact.com/in/products/0301534>



Bridge, pitch: 8 mm, number of positions: 10, color: silver

**i** Max. current carrying capacity: 57 A

# UK 6 N - Feed-through terminal block

3004524

<https://www.phoenixcontact.com/in/products/3004524>




## FBI 2- 8 - Fixed bridge

0200020

<https://www.phoenixcontact.com/in/products/0200020>



Fixed bridge, pitch: 8 mm, number of positions: 2, color: silver

 Max. current carrying capacity: 57 A

---


## FBI 3- 8 - Fixed bridge

0200059

<https://www.phoenixcontact.com/in/products/0200059>



Fixed bridge, pitch: 8 mm, number of positions: 3, color: silver

 Max. current carrying capacity: 57 A

# UK 6 N - Feed-through terminal block

3004524

<https://www.phoenixcontact.com/in/products/3004524>




## FBI 4- 8 - Fixed bridge

0200046

<https://www.phoenixcontact.com/in/products/0200046>

Fixed bridge, pitch: 8 mm, number of positions: 4, color: silver



 Max. current carrying capacity: 57 A

---


## FBI 10- 8 - Fixed bridge

0203263

<https://www.phoenixcontact.com/in/products/0203263>

Fixed bridge, pitch: 8 mm, number of positions: 10, color: silver



 Max. current carrying capacity: 57 A

# UK 6 N - Feed-through terminal block

3004524

<https://www.phoenixcontact.com/in/products/3004524>




## FBI 10- 8-EX - Fixed bridge

0711700

<https://www.phoenixcontact.com/in/products/0711700>

Fixed bridge, pitch: 8 mm, number of positions: 10, color: silver



 Max. current carrying capacity: 57 A

---

## FB 2- 8-EX - Fixed bridge

3029224

<https://www.phoenixcontact.com/in/products/3029224>

Fixed bridge, pitch: 8 mm, number of positions: 2, color: silver



 Max. current carrying capacity: 57 A

# UK 6 N - Feed-through terminal block

3004524

<https://www.phoenixcontact.com/in/products/3004524>




## FB 4- 8 - Fixed bridge

0202183

<https://www.phoenixcontact.com/in/products/0202183>



Fixed bridge, number of positions: 4, color: silver

 Max. current carrying capacity: 57 A

---


## FB 10- 8 - Fixed bridge

0202170

<https://www.phoenixcontact.com/in/products/0202170>



Fixed bridge, pitch: 8 mm, number of positions: 10, color: silver

 Max. current carrying capacity: 57 A



# UK 6 N - Feed-through terminal block

3004524

<https://www.phoenixcontact.com/in/products/3004524>




## FB 10- 8-EX - Fixed bridge

3003185

<https://www.phoenixcontact.com/in/products/3003185>

Fixed bridge, pitch: 8 mm, number of positions: 10, color: silver



 Max. current carrying capacity: 57 A

---


## EB 2- 8 - Insertion bridge

0202154

<https://www.phoenixcontact.com/in/products/0202154>

Insertion bridge, pitch: 8 mm, number of positions: 2, color: gray



 Max. current carrying capacity: 57 A

# UK 6 N - Feed-through terminal block

3004524

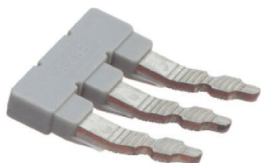
<https://www.phoenixcontact.com/in/products/3004524>




## EB 3- 8 - Insertion bridge

0202141

<https://www.phoenixcontact.com/in/products/0202141>



Insertion bridge, pitch: 8 mm, number of positions: 3, color: gray

 Max. current carrying capacity: 57 A

---


## EB 4- 8 - Insertion bridge

0202142

<https://www.phoenixcontact.com/in/products/0202142>



Insertion bridge, pitch: 8 mm, number of positions: 4, color: gray

 Max. current carrying capacity: 57 A

# UK 6 N - Feed-through terminal block

3004524

<https://www.phoenixcontact.com/in/products/3004524>

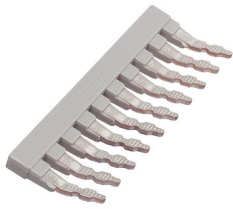


## EB 10- 8 - Insertion bridge

0202138

<https://www.phoenixcontact.com/in/products/0202138>

Insertion bridge, pitch: 8 mm, number of positions: 10, color: gray



 Max. current carrying capacity: 57 A

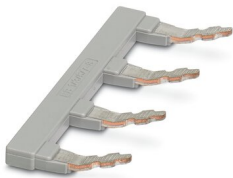
---


## EB 1/3/5/7-8 - Insertion bridge

3072340

<https://www.phoenixcontact.com/in/products/3072340>

Insertion bridge, pitch: 16.4 mm, number of positions: 4, pin assignment: 1, 3, 5, 7, length: 24 mm, color: gray



 Max. current carrying capacity: 57 A

# UK 6 N - Feed-through terminal block

3004524

<https://www.phoenixcontact.com/in/products/3004524>

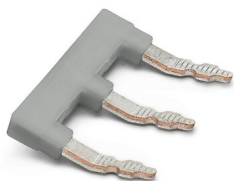



## EB 1/3/5-8 - Insertion bridge

3072341

<https://www.phoenixcontact.com/in/products/3072341>

Insertion bridge, pitch: 16.4 mm, number of positions: 3, pin assignment: 1,3,5, length: 24 mm, color: gray



 Max. current carrying capacity: 57 A

---

## D-UK 4/10 - End cover

3003020

<https://www.phoenixcontact.com/in/products/3003020>

End cover, length: 42.5 mm, width: 1.8 mm, height: 35.9 mm, color: gray



# UK 6 N - Feed-through terminal block

3004524

<https://www.phoenixcontact.com/in/products/3004524>

## WS 5- 8 - Warning label

1004416

<https://www.phoenixcontact.com/in/products/1004416>

Warning plate, with 2 plastic screws, across 5 terminal blocks, pitch 8 mm



---

## WS 4- 8 - Warning label

1004212

<https://www.phoenixcontact.com/in/products/1004212>

Warning plate, with 2 plastic screws, across 4 terminal blocks, pitch 8 mm



# UK 6 N - Feed-through terminal block

3004524

<https://www.phoenixcontact.com/in/products/3004524>



## WS 3- 8 - Warning label

1004128

<https://www.phoenixcontact.com/in/products/1004128>

Warning plate, with 2 plastic screws, across 3 terminal blocks, pitch 8 mm



---

## EA 5-WS - Cover

1024085

<https://www.phoenixcontact.com/in/products/1024085>

Single covers, for covering one terminal block, with black symbol (lightning flash)  
snap fit, color: transparent/yellow



# UK 6 N - Feed-through terminal block

3004524

<https://www.phoenixcontact.com/in/products/3004524>



## EA 5 - Cover

1024014

<https://www.phoenixcontact.com/in/products/1024014>

Cover, material: ABS, color: transparent



---

## KSS 8 - Short-circuit connector

0311540

<https://www.phoenixcontact.com/in/products/0311540>

Short-circuit connector, pitch: 8 mm, number of positions: 2, color: black



# UK 6 N - Feed-through terminal block

3004524

<https://www.phoenixcontact.com/in/products/3004524>



## TS-K - Separating plate

1302215

<https://www.phoenixcontact.com/in/products/1302215>



Separating plate, length: 22 mm, width: 0.5 mm, height: 22 mm, color: gray

---

## ATP-UK - Partition plate

3003224

<https://www.phoenixcontact.com/in/products/3003224>



Partition plate, length: 56 mm, width: 1.5 mm, height: 45.7 mm, color: gray



## UK 6 N - Feed-through terminal block

3004524

<https://www.phoenixcontact.com/in/products/3004524>



## SBS 8:UNBEDRUCKT - Marker card

1007235

<https://www.phoenixcontact.com/in/products/1007235>



Marker card, Card, white, unlabeled, can be labeled with: Marker pen, mounting type: snap into tall marker groove, snap into flat marker groove, for terminal block width: 8 mm, lettering field size: 6 x 8.1 mm

---

## IS-K 10 - Bridge bar isolator

1303337

<https://www.phoenixcontact.com/in/products/1303337>



Bridge bar isolator, color: gray

# UK 6 N - Feed-through terminal block

3004524

<https://www.phoenixcontact.com/in/products/3004524>



## SZS 1,0X4,0 VDE - Screwdriver

1205066

<https://www.phoenixcontact.com/in/products/1205066>



Screwdriver, slot-headed, VDE insulated, size: 1.0 x 4.0 x 100 mm, 2-component grip, with non-slip grip

---

## NS 32 PERF 2000MM-VPE 10 - DIN rail perforated

1201002

<https://www.phoenixcontact.com/in/products/1201002>



DIN rail perforated, acc. to EN 60715, material: Steel, galvanized, passivated with a thick layer, G profile, color: silver, Pack of 10 (20 m)

# UK 6 N - Feed-through terminal block

3004524

<https://www.phoenixcontact.com/in/products/3004524>



## NS 32 UNPERF 2000MM-VPE 10 - DIN rail, unperforated

1201015

<https://www.phoenixcontact.com/in/products/1201015>



DIN rail, unperforated, acc. to EN 60715, material: Steel, galvanized, passivated with a thick layer, G profile, color: silver, Pack of 10 (20 m)

---

## NS 35/ 7,5 PERF 2000MM - DIN rail perforated

0801733

<https://www.phoenixcontact.com/in/products/0801733>



DIN rail perforated, acc. to EN 60715, material: Steel, galvanized, passivated with a thick layer, Standard profile, color: silver, Pack of 25 (50 m)

# UK 6 N - Feed-through terminal block

3004524

<https://www.phoenixcontact.com/in/products/3004524>



## NS 35/ 7,5 UNPERF 2000MM - DIN rail, unperforated

0801681

<https://www.phoenixcontact.com/in/products/0801681>



DIN rail, unperforated, acc. to EN 60715, material: Steel, galvanized, passivated with a thick layer, Standard profile, color: silver, Pack of 25 (50 m)

---

## NS 35/ 7,5 WH PERF 2000MM - DIN rail perforated

1204119

<https://www.phoenixcontact.com/in/products/1204119>



DIN rail perforated, acc. to EN 60715, material: Steel, Galvanized, white passivated, Standard profile, color: silver, Pack of 25 (50 m)

# UK 6 N - Feed-through terminal block

3004524

<https://www.phoenixcontact.com/in/products/3004524>



## NS 35/ 7,5 WH UNPERF 2000MM-VPE 10 - DIN rail, unperforated

1204122

<https://www.phoenixcontact.com/in/products/1204122>



DIN rail, unperforated, acc. to EN 60715, material: Steel, Galvanized, white passivated, Standard profile, color: silver, Pack of 10 (20 m)

---

## NS 35/ 7,5 AL UNPERF 2000MM - DIN rail, unperforated

0801704

<https://www.phoenixcontact.com/in/products/0801704>



DIN rail, unperforated, acc. to EN 60715, material: Aluminum, uncoated, Standard profile, color: silver, Pack of 25 (50 m)

# UK 6 N - Feed-through terminal block

3004524

<https://www.phoenixcontact.com/in/products/3004524>



## NS 35/ 7,5 ZN PERF 2000MM - DIN rail perforated

1206421

<https://www.phoenixcontact.com/in/products/1206421>



DIN rail perforated, acc. to EN 60715, material: Steel, galvanized, Standard profile, color: silver, Pack of 25 (50 m)

---

## NS 35/ 7,5 ZN UNPERF 2000MM - DIN rail, unperforated

1206434

<https://www.phoenixcontact.com/in/products/1206434>



DIN rail, unperforated, acc. to EN 60715, material: Steel, galvanized, Standard profile, color: silver, Pack of 25 (50 m)

# UK 6 N - Feed-through terminal block

3004524

<https://www.phoenixcontact.com/in/products/3004524>



## NS 35/ 7,5 CU UNPERF 2000MM-VPE 10 - DIN rail, unperforated

0801762

<https://www.phoenixcontact.com/in/products/0801762>



DIN rail, unperforated, acc. to EN 60715, material: Copper, uncoated, Standard profile, color: copper-colored, Pack of 10 (20 m)

---

## NS 35/ 7,5 CAP - End cap

1206560

<https://www.phoenixcontact.com/in/products/1206560>

DIN rail end piece, for DIN rail NS 35/7.5



# UK 6 N - Feed-through terminal block

3004524

<https://www.phoenixcontact.com/in/products/3004524>



## NS 35/15 PERF 2000MM - DIN rail perforated

1201730

<https://www.phoenixcontact.com/in/products/1201730>



DIN rail perforated, similar to EN 60715, material: Steel, galvanized, passivated with a thick layer, Standard profile, color: silver, Pack of 25 (50 m)

---

## NS 35/15 UNPERF 2000MM - DIN rail, unperforated

1201714

<https://www.phoenixcontact.com/in/products/1201714>



DIN rail, unperforated, similar to EN 60715, material: Steel, galvanized, passivated with a thick layer, Standard profile, color: silver, Pack of 25 (50 m)



# UK 6 N - Feed-through terminal block

3004524

<https://www.phoenixcontact.com/in/products/3004524>



## NS 35/15 WH PERF 2000MM - DIN rail perforated

0806602

<https://www.phoenixcontact.com/in/products/0806602>



DIN rail perforated, similar to EN 60715, material: Steel, Galvanized, white passivated, Standard profile, color: white, Pack of 25 (50 m)

---

## NS 35/15 WH UNPERF 2000MM-VPE 10 - DIN rail, unperforated

1204135

<https://www.phoenixcontact.com/in/products/1204135>



DIN rail, unperforated, similar to EN 60715, material: Steel, Galvanized, white passivated, Standard profile, color: silver, Pack of 10 (20 m)

# UK 6 N - Feed-through terminal block

3004524

<https://www.phoenixcontact.com/in/products/3004524>



## NS 35/15 AL UNPERF 2000MM - DIN rail, unperforated

1201756

<https://www.phoenixcontact.com/in/products/1201756>



DIN rail, unperforated, similar to EN 60715, material: Aluminum, uncoated, Standard profile, color: silver

---

## NS 35/15 ZN PERF 2000MM - DIN rail perforated

1206599

<https://www.phoenixcontact.com/in/products/1206599>



DIN rail perforated, similar to EN 60715, material: Steel, galvanized, Standard profile, color: silver, Pack of 25 (50 m)

# UK 6 N - Feed-through terminal block

3004524

<https://www.phoenixcontact.com/in/products/3004524>



## NS 35/15 ZN UNPERF 2000MM - DIN rail, unperforated

1206586

<https://www.phoenixcontact.com/in/products/1206586>



DIN rail, unperforated, similar to EN 60715, material: Steel, galvanized, Standard profile, color: silver, Pack of 25 (50 m)

---

## NS 35/15 CU UNPERF 2000MM-VPE 10 - DIN rail, unperforated

1201895

<https://www.phoenixcontact.com/in/products/1201895>



DIN rail, unperforated, similar to EN 60715, material: Copper, uncoated, Standard profile, color: copper-colored, Pack of 10 (20 m)

# UK 6 N - Feed-through terminal block

3004524

<https://www.phoenixcontact.com/in/products/3004524>



## NS 35/15 CAP - End cap

1206573

<https://www.phoenixcontact.com/in/products/1206573>

DIN rail end piece, for DIN rail NS 35/15



---

## NS 35/15-2,3 UNPERF 2000MM-VPE 10 - DIN rail, unperforated

1201798

<https://www.phoenixcontact.com/in/products/1201798>



DIN rail, unperforated, acc. to EN 60715, material: Steel, galvanized, passivated with a thick layer, Standard profile 2.3 mm, color: silver, Pack of 10 (20 m)

# UK 6 N - Feed-through terminal block

3004524

<https://www.phoenixcontact.com/in/products/3004524>

## ZB 8:UNBEDRUCKT - Zack marker strip

1052002

<https://www.phoenixcontact.com/in/products/1052002>



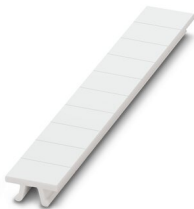
Zack marker strip, Strip, white, unlabeled, can be labeled with: CMS-P1-PLOTTER, PLOTMARK, mounting type: snapped, for terminal block width: 8.2 mm, lettering field size: 10.5 x 8.15 mm, Number of individual labels: 10

---

## ZB 8 CUS - Zack marker strip

0825011

<https://www.phoenixcontact.com/in/products/0825011>



Zack marker strip, can be ordered: Strip, white, labeled according to customer specifications, mounting type: snap into tall marker groove, for terminal block width: 8.2 mm, lettering field size: 10.5 x 8.15 mm, Number of individual labels: 10

# UK 6 N - Feed-through terminal block

3004524

<https://www.phoenixcontact.com/in/products/3004524>



## UC-TM 8 - Marker for terminal blocks

0818072

<https://www.phoenixcontact.com/in/products/0818072>



Marker for terminal blocks, Sheet, white, unlabeled, can be labeled with: BLUEMARK ID COLOR, BLUEMARK ID, BLUEMARK CLED, PLOTMARK, CMS-P1-PLOTTER, mounting type: snapped, for terminal block width: 8.2 mm, lettering field size: 7.6 x 10.5 mm, Number of individual labels: 56

---

## UC-TM 8 CUS - Marker for terminal blocks

0824597

<https://www.phoenixcontact.com/in/products/0824597>



Marker for terminal blocks, can be ordered: by sheet, white, labeled according to customer specifications, mounting type: snap into tall marker groove, for terminal block width: 8.2 mm, lettering field size: 7.6 x 10.5 mm, Number of individual labels: 56

# UK 6 N - Feed-through terminal block

3004524

<https://www.phoenixcontact.com/in/products/3004524>



## UCT-TM 8 - Marker for terminal blocks

0828740

<https://www.phoenixcontact.com/in/products/0828740>



Marker for terminal blocks, Sheet, white, unlabeled, can be labeled with: TOPMARK NEO, TOPMARK LASER, BLUEMARK ID COLOR, BLUEMARK ID, BLUEMARK CLED, THERMOMARK PRIME, THERMOMARK CARD 2.0, THERMOMARK CARD, mounting type: snapped, for terminal block width: 8.2 mm, lettering field size: 7.6 x 10.5 mm, Number of individual labels: 42

---

## UCT-TM 8 CUS - Marker for terminal blocks

0829616

<https://www.phoenixcontact.com/in/products/0829616>



Marker for terminal blocks, can be ordered: by sheet, white, labeled according to customer specifications, mounting type: snap into tall marker groove, for terminal block width: 8.2 mm, lettering field size: 7.6 x 10.5 mm, Number of individual labels: 42

# UK 6 N - Feed-through terminal block

3004524

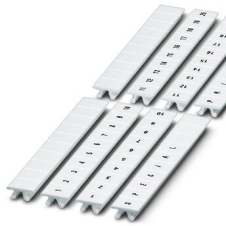
<https://www.phoenixcontact.com/in/products/3004524>



## ZB 8,LGS:FORTL.ZAHLEN - Zack marker strip

1052015

<https://www.phoenixcontact.com/in/products/1052015>



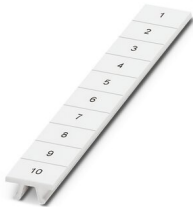
Zack marker strip, Strip, white, labeled, can be labeled with: CMS-P1-PLOTTER, printed horizontally: consecutive numbers 1 ... 10, 11 ... 20, etc. up to 91 ... 100, mounting type: snapped, for terminal block width: 8.2 mm, lettering field size: 10. 5 x 8.15 mm, Number of individual labels: 10

---

## ZB 8,QR:FORTL.ZAHLEN - Zack marker strip

1052028

<https://www.phoenixcontact.com/in/products/1052028>



Zack marker strip, Strip, white, labeled, can be labeled with: CMS-P1-PLOTTER, Printed vertically: consecutive numbers 1 ... 10, 11 ... 20, etc. up to 91 ... 100, mounting type: snapped, for terminal block width: 8.2 mm, lettering field size: 10. 5 x 8.15 mm, Number of individual labels: 10



# UK 6 N - Feed-through terminal block

3004524

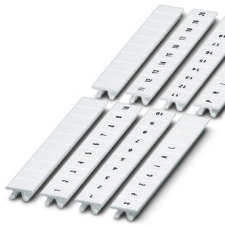
<https://www.phoenixcontact.com/in/products/3004524>



## ZB 8,LGS:L1-N,PE - Marker for terminal blocks

1052413

<https://www.phoenixcontact.com/in/products/1052413>



Marker for terminal blocks, Strip, white, labeled, can be labeled with: CMS-P1-PLOTTER, horizontal: L1, L2, L3, N, PE, L1, L2, L3, N, PE, mounting type: snapped, for terminal block width: 8.2 mm, lettering field size: 10.5 x 8.15 mm, Number of individual labels: 10

---

## PS-MT - Test plugs

0311647

<https://www.phoenixcontact.com/in/products/0311647>



Test plugs, number of positions: 1, color: silver

# UK 6 N - Feed-through terminal block

3004524

<https://www.phoenixcontact.com/in/products/3004524>



## PS-IH WH - Insulating sleeve

0311566

<https://www.phoenixcontact.com/in/products/0311566>



Insulating sleeve, number of positions: 1, color: white

---

## PS-IH RD - Insulating sleeve

0311579

<https://www.phoenixcontact.com/in/products/0311579>



Insulating sleeve, number of positions: 1, color: red

# UK 6 N - Feed-through terminal block

3004524

<https://www.phoenixcontact.com/in/products/3004524>



## PS-IH BU - Insulating sleeve

0311582

<https://www.phoenixcontact.com/in/products/0311582>



Insulating sleeve, number of positions: 1, color: blue

---

## PS-IH YE - Insulating sleeve

0311595

<https://www.phoenixcontact.com/in/products/0311595>



Insulating sleeve, number of positions: 1, color: yellow

# UK 6 N - Feed-through terminal block

3004524

<https://www.phoenixcontact.com/in/products/3004524>



## PS-IH GN - Insulating sleeve

0311605

<https://www.phoenixcontact.com/in/products/0311605>



Insulating sleeve, number of positions: 1, color: green

---

## PS-IH GY - Insulating sleeve

0311621

<https://www.phoenixcontact.com/in/products/0311621>



Insulating sleeve, number of positions: 1, color: gray

# UK 6 N - Feed-through terminal block

3004524

<https://www.phoenixcontact.com/in/products/3004524>



## PS-IH BK - Insulating sleeve

0311634

<https://www.phoenixcontact.com/in/products/0311634>



Insulating sleeve, number of positions: 1, color: black

---

## PS-IH VT - Insulating sleeve

0311618

<https://www.phoenixcontact.com/in/products/0311618>



Insulating sleeve, number of positions: 1, color: violet

# UK 6 N - Feed-through terminal block

3004524

<https://www.phoenixcontact.com/in/products/3004524>



## CLIPFIX 35 - End clamp

3022218

<https://www.phoenixcontact.com/in/products/3022218>



Quick mounting end clamp for NS 35/7,5 DIN rail or NS 35/15 DIN rail, with marking option, width: 9.5 mm, color: gray

---

## CLIPFIX 35-5 - End clamp

3022276

<https://www.phoenixcontact.com/in/products/3022276>



Quick mounting end clamp for NS 35/7,5 DIN rail or NS 35/15 DIN rail, with marking option, with parking option for FBS...5, FBS...6, KSS 5, KSS 6, width: 5.15 mm, color: gray

# UK 6 N - Feed-through terminal block

3004524

<https://www.phoenixcontact.com/in/products/3004524>

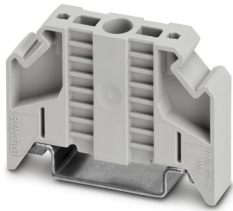


## E/NS 35 N - End clamp

0800886

<https://www.phoenixcontact.com/in/products/0800886>

End clamp, width: 9.5 mm, color: gray



---

## E/UK - End clamp

1201442

<https://www.phoenixcontact.com/in/products/1201442>

End clamp, material: PA, color: gray, Mounting on a DIN rail NS 32 or NS 35



# UK 6 N - Feed-through terminal block

3004524

<https://www.phoenixcontact.com/in/products/3004524>



## E/UK 1 - End clamp

1201413

<https://www.phoenixcontact.com/in/products/1201413>



End clamps, for supporting the ends of double-level and three-level terminal blocks, width: 10 mm, color: gray

---

## PSBJ 4/15/6 FARBLOS - Female test connector

0303419

<https://www.phoenixcontact.com/in/products/0303419>



Female test connector, number of positions: 1, color: transparent



# UK 6 N - Feed-through terminal block

3004524

<https://www.phoenixcontact.com/in/products/3004524>



## PSBJ 4/15/6 WH - Female test connector

0303312

<https://www.phoenixcontact.com/in/products/0303312>



Female test connector, number of positions: 1, color: white

---

## PSBJ 4/15/6 RD - Female test connector

0303325

<https://www.phoenixcontact.com/in/products/0303325>



Female test connector, number of positions: 1, color: red

# UK 6 N - Feed-through terminal block

3004524

<https://www.phoenixcontact.com/in/products/3004524>



## PSBJ 4/15/6 BU - Female test connector

0303354

<https://www.phoenixcontact.com/in/products/0303354>



Female test connector, number of positions: 1, color: blue

---

## PSBJ 4/15/6 YE - Female test connector

0303367

<https://www.phoenixcontact.com/in/products/0303367>



Female test connector, number of positions: 1, color: yellow

# UK 6 N - Feed-through terminal block

3004524

<https://www.phoenixcontact.com/in/products/3004524>



## PSBJ 4/15/6 GN - Female test connector

0303370

<https://www.phoenixcontact.com/in/products/0303370>



Female test connector, number of positions: 1, color: green

---

## PSBJ 4/15/6 VT - Female test connector

0303383

<https://www.phoenixcontact.com/in/products/0303383>



Female test connector, number of positions: 1, color: violet

# UK 6 N - Feed-through terminal block

3004524

<https://www.phoenixcontact.com/in/products/3004524>



## PSBJ 4/15/6 GY - Female test connector

0303396

<https://www.phoenixcontact.com/in/products/0303396>



Female test connector, number of positions: 1, color: gray

---

## PSBJ 4/15/6 BK - Female test connector

0303406

<https://www.phoenixcontact.com/in/products/0303406>



Female test connector, number of positions: 1, color: black

# UK 6 N - Feed-through terminal block

3004524

<https://www.phoenixcontact.com/in/products/3004524>



## PSB 4/7/6 - Female test connector

0303299

<https://www.phoenixcontact.com/in/products/0303299>

Female test connector, number of positions: 1, color: silver



---

Phoenix Contact 2023 © - all rights reserved

<https://www.phoenixcontact.com>

PHOENIX CONTACT (I) Pvt. Ltd.

A-58/2, Okhla Industrial Area, Phase - II, New Delhi-110 020

+91.1275.71420

[info@phoenixcontact.co.in](mailto:info@phoenixcontact.co.in)