

UK 5 N BU - Feed-through terminal block



3004388

<https://www.phoenixcontact.com/in/products/3004388>

Please be informed that the data shown in this PDF document is generated from our Online Catalog. Please find the complete data in the user documentation. Our General Terms of Use for Downloads are valid.



Feed-through terminal block, nom. voltage: 800 V, nominal current: 32 A, number of connections: 2, connection method: Screw connection, Rated cross section: 4 mm², cross section: 0.2 mm² - 6 mm², mounting type: NS 35/7,5, NS 35/15, NS 32, color: blue

Your advantages

- Universal foot which can be used on NS 35... and NS 32... DIN rails
- The UK universal screw terminal block series has the typical features which are decisive for practical applications
- Potential distribution via fixed bridges in the terminal center or insertion bridges in the clamping space

Commercial Data

Item number	3004388
Packing unit	50 pc
Minimum order quantity	50 pc
Sales Key	BE1
Product Key	BE1211
Catalog Page	Page 459 (C-1-2019)
GTIN	4017918090777
Weight per Piece (including packing)	8.629 g
Weight per Piece (excluding packing)	8.562 g
Customs tariff number	85369010
Country of origin	IN

Technical Data

Product properties

Product type	Feed-through terminal block
Number of connections	2
Number of rows	1
Potentials	1

Insulation characteristics

Overvoltage category	III
Degree of pollution	3

Electrical properties

Rated surge voltage	8 kV
Maximum power dissipation for nominal condition	1.02 W

Connection data

Number of connections per level	2
Nominal cross section	4 mm ²

Level 1 above 1 below 1

Screw thread	M3
Tightening torque	0.6 ... 0.8 Nm
Stripping length	8 mm
Internal cylindrical gage	A4
Connection in acc. with standard	IEC 60947-7-1
Conductor cross section rigid	0.2 mm ² ... 6 mm ²
Cross section AWG	24 ... 10 (converted acc. to IEC)
Conductor cross section flexible	0.2 mm ² ... 4 mm ²
Conductor cross section, flexible [AWG]	24 ... 12 (converted acc. to IEC)
Conductor cross-section flexible (ferrule without plastic sleeve)	0.25 mm ² ... 4 mm ²
Flexible conductor cross section (ferrule with plastic sleeve)	0.25 mm ² ... 2.5 mm ²
Cross-section with insertion bridge, rigid	4 mm ²
Cross-section with insertion bridge, flexible	4 mm ²
2 conductors with same cross section, solid	0.2 mm ² ... 1.5 mm ²
2 conductors with same cross section, flexible	0.2 mm ² ... 1.5 mm ²
2 conductors with same cross section, flexible, with ferrule without plastic sleeve	0.25 mm ² ... 1.5 mm ²
2 conductors with the same cross section, flexible, with TWIN ferrule with plastic sleeve	0.5 mm ² ... 2.5 mm ²
Nominal current	32 A
Maximum load current	41 A (with 6 mm ² conductor cross section)
Nominal voltage	800 V
Nominal cross section	4 mm ²

UK 5 N BU - Feed-through terminal block



3004388

<https://www.phoenixcontact.com/in/products/3004388>

Ex data

Rated data (ATEX/IECEX)

Identification	□ II 2 GD Ex eb IIC Gb
Operating temperature range	-60 °C ... 110 °C
Ex-certified accessories	3003020 D-UK 4/10
	3006027 D-UK 16
	3003224 ATP-UK
	1212587 SF-SL 0,6X3,5-100 S-VDE
	1201442 E/UK
List of bridges	Fixed bridge / FB 2- 6-EX / 0201456
	Fixed bridge / FB 3- 6-EX / 0201469
	Fixed bridge / FB 10- 6-EX / 0201281
Bridge data	27.5 A / 4 mm ²
List of bridges	Fixed bridge / FBI 10- 6-EX / 0203519
Bridge data	28.5 A / 4 mm ²
List of bridges	Chain bridge / KB- 6-EX / 0201485
Bridge data	28 A / 4 mm ²
List of bridges	Chain bridge / KBI- 6-EX / 0711849
Bridge data	28 A / 4 mm ²
	28 A / 4 mm ²
List of bridges	Cross connection bar / FB-150 METER / 0201595
	Cross connection bar / ZSR-EX / 0200017
Bridge data	26 A / 4 mm ²
Ex temperature increase	40 K (30 A / 4 mm ²)
Rated voltage	690 V (NS 35)
for bridging with bridge	550 V (NS 32)
- At bridging between non-adjacent terminal blocks	176 V
Rated insulation voltage	630 V (NS 35)
	500 V (NS 32)
output	(Permanent)

Ex level General

Rated current	27 A
Maximum load current	35 A
Contact resistance	0.37 mΩ

Ex connection data General

Torque range	0.6 Nm ... 0.8 Nm
Nominal cross section	4 mm ²
Rated cross section AWG	12
Connection capacity rigid	0.2 mm ² ... 6 mm ²
Connection capacity AWG	24 ... 10
Connection capacity flexible	0.2 mm ² ... 4 mm ²
Connection capacity AWG	24 ... 12

UK 5 N BU - Feed-through terminal block



3004388

<https://www.phoenixcontact.com/in/products/3004388>

2 conductors with same cross section, solid	0.2 mm ² ... 1.5 mm ²
2 conductors with the same cross-section AWG rigid	24 ... 16
2 conductors with same cross section, stranded	0.2 mm ² ... 1.5 mm ²
2 conductors with the same cross-section AWG flexible	24 ... 16

Dimensions

Width	6.2 mm
End cover width	1.8 mm
Height NS 35/15	54.5 mm
Height NS 35/7,5	47 mm
Height	1.85 "
Height NS 32	52 mm
Length	42.5 mm

Material specifications

Color	blue
Flammability rating according to UL 94	V0
Insulating material group	I
Insulating material	PA
Static insulating material application in cold	-60 °C
Temperature index of insulation material (DIN EN 60216-1 (VDE 0304-21))	125 °C
Relative insulation material temperature index (Elec., UL 746 B)	130 °C
Fire protection for rail vehicles (DIN EN 45545-2) R22	HL 1 - HL 3
Fire protection for rail vehicles (DIN EN 45545-2) R23	HL 1 - HL 3
Fire protection for rail vehicles (DIN EN 45545-2) R24	HL 1 - HL 3
Fire protection for rail vehicles (DIN EN 45545-2) R26	HL 1 - HL 3
Calorimetric heat release NFPA 130 (ASTM E 1354)	27,5 MJ/kg
Surface flammability NFPA 130 (ASTM E 162)	passed
Specific optical density of smoke NFPA 130 (ASTM E 662)	passed
Smoke gas toxicity NFPA 130 (SMP 800C)	passed

Electrical tests

Surge voltage test

Test voltage setpoint	9.8 kV
Result	Test passed

Temperature-rise test

Requirement temperature-rise test	Increase in temperature ≤ 45 K
Result	Test passed
Short-time withstand current 4 mm ²	0.48 kA
Result	Test passed

Power-frequency withstand voltage

Test voltage setpoint	2 kV
-----------------------	------

UK 5 N BU - Feed-through terminal block



3004388

<https://www.phoenixcontact.com/in/products/3004388>

Result	Test passed
--------	-------------

Mechanical properties

Mechanical data

Open side panel	Yes
-----------------	-----

Mechanical tests

Mechanical strength

Result	Test passed
--------	-------------

Attachment on the carrier

DIN rail/fixing support	NS 32/NS 35
Test force setpoint	5 N
Result	Test passed

Test for conductor damage and slackening

Rotation speed	10 rpm
Revolutions	135
Conductor cross section/weight	0.2 mm ² / 0.2 kg
	4 mm ² / 0.9 kg
	6 mm ² / 1.4 kg
Result	Test passed

Environmental and real-life conditions

Needle-flame test

Time of exposure	30 s
Result	Test passed

Ambient conditions

Ambient temperature (operation)	-60 °C ... 105 °C (max. short-term operating temperature RTI Elec.)
Ambient temperature (storage/transport)	-25 °C ... 60 °C (for a short time, not exceeding 24 h, -60 °C to +70 °C)
Ambient temperature (assembly)	-5 °C ... 70 °C
Ambient temperature (actuation)	-5 °C ... 70 °C
Permissible humidity (storage/transport)	30 % ... 70 %

Standards and regulations

Connection in acc. with standard	IEC 60947-7-1
----------------------------------	---------------

Mounting

Mounting type	NS 35/7,5
	NS 35/15
	NS 32

UK 5 N BU - Feed-through terminal block

3004388

<https://www.phoenixcontact.com/in/products/3004388>



Drawings

Circuit diagram



UK 5 N BU - Feed-through terminal block




3004388


<https://www.phoenixcontact.com/in/products/3004388>

Approvals

 CSA Approval ID: 13631				
	Nominal Voltage U_N	Nominal Current I_N	Cross Section AWG	Cross Section mm^2
	600 V	30 A	-	-

 IECEE CB Scheme Approval ID: NL-83812				
	Nominal Voltage U_N	Nominal Current I_N	Cross Section AWG	Cross Section mm^2
	800 V	32 A	-	0.2 - 4

 EAC Approval ID: RU C-DE.A*30.B.01742				
---	--	--	--	--

 cULus Recognized Approval ID: E60425				
	Nominal Voltage U_N	Nominal Current I_N	Cross Section AWG	Cross Section mm^2
Use group F	800 V	30 A	30 - 10	-

 KEMA-KEUR Approval ID: 71-125614				
	Nominal Voltage U_N	Nominal Current I_N	Cross Section AWG	Cross Section mm^2
	800 V	32 A	-	0.2 - 4

 CSA Approval ID: 13631				
	Nominal Voltage U_N	Nominal Current I_N	Cross Section AWG	Cross Section mm^2
	600 V	40 A	-	-

 ATEX Approval ID: KEMA98ATEX1651U				
---	--	--	--	--

 cUL Recognized Approval ID: E192998				
	Nominal Voltage U_N	Nominal Current I_N	Cross Section AWG	Cross Section mm^2
	600 V	30 A	30 - 10	-

UK 5 N BU - Feed-through terminal block



3004388

<https://www.phoenixcontact.com/in/products/3004388>



EAC Ex

Approval ID: RU C-DE.HA91.B.00066



GL

Approval ID: 98876-96 HH

	Nominal Voltage U_N	Nominal Current I_N	Cross Section AWG	Cross Section mm^2
EEx e II part certificate	690 V	32.5 A	-	- 4



IECEx

Approval ID: IECEx KEM 06.0034U



UL Recognized

Approval ID: E192998

	Nominal Voltage U_N	Nominal Current I_N	Cross Section AWG	Cross Section mm^2
	600 V	30 A	30 - 10	-



CCC

Approval ID: 2020322313000623



NEPSI

Approval ID: GYJ20.1195U



DNV GL-EX

Approval ID: TAE00003K6

	Nominal Voltage U_N	Nominal Current I_N	Cross Section AWG	Cross Section mm^2
EEx e II part certificate	440 V	32 A	-	- 2.5



UKCA-EX

Approval ID: DEKRA 21UKEX0306U

UK 5 N BU - Feed-through terminal block



3004388

<https://www.phoenixcontact.com/in/products/3004388>

Classifications

ECLASS

ECLASS-11.0

27141120

ETIM

ETIM 8.0

EC000897

UNSPSC

UNSPSC 21.0

39121400

UK 5 N BU - Feed-through terminal block



3004388

<https://www.phoenixcontact.com/in/products/3004388>

Environmental Product Compliance

REACH SVHC	Lead 7439-92-1
China RoHS	Environmentally Friendly Use Period = 50 years
	For information on hazardous substances, refer to the manufacturer's declaration available under "Downloads"

UK 5 N BU - Feed-through terminal block

3004388

<https://www.phoenixcontact.com/in/products/3004388>

Accessories



Note: Applying some accessories below might limit this product.

IS-K 4 - Bridge bar isolator

1302338

<https://www.phoenixcontact.com/in/products/1302338>



Bridge bar isolator, color: gray

ISSBI 10- 6 - Bridge

0301505

<https://www.phoenixcontact.com/in/products/0301505>



Bridge, pitch: 6 mm, number of positions: 10, color: silver



Max. current carrying capacity: 30 A

UK 5 N BU - Feed-through terminal block

3004388

<https://www.phoenixcontact.com/in/products/3004388>




LB 10-6 BU - Bridge

0202280

<https://www.phoenixcontact.com/in/products/0202280>



Bridge, pitch: 6 mm, number of positions: 10, color: blue

 Max. current carrying capacity: 32 A

LB 10-6 GY - Bridge

0202358

<https://www.phoenixcontact.com/in/products/0202358>



Bridge, pitch: 6 mm, number of positions: 10, color: gray

 Max. current carrying capacity: 32 A

UK 5 N BU - Feed-through terminal block

3004388

<https://www.phoenixcontact.com/in/products/3004388>



LB 100-6 GY - Bridge

0202345

<https://www.phoenixcontact.com/in/products/0202345>



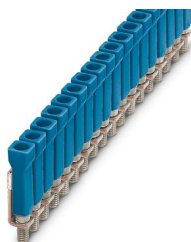
Bridge, pitch: 6 mm, number of positions: 100, color: gray

 Max. current carrying capacity: 32 A

LB 100-6 BU - Bridge

0202303

<https://www.phoenixcontact.com/in/products/0202303>



Bridge, number of positions: 100, color: blue

 Max. current carrying capacity: 32 A

UK 5 N BU - Feed-through terminal block

3004388

<https://www.phoenixcontact.com/in/products/3004388>




KB- 6-EX - Chain bridge

0201485

<https://www.phoenixcontact.com/in/products/0201485>



Chain bridge, number of positions: 1, color: silver

 Max. current carrying capacity: 32 A


FBI 2- 6 - Fixed bridge

0203438

<https://www.phoenixcontact.com/in/products/0203438>



Fixed bridge, pitch: 6.2 mm, number of positions: 2, color: silver

 Max. current carrying capacity: 41 A

UK 5 N BU - Feed-through terminal block

3004388

<https://www.phoenixcontact.com/in/products/3004388>




FBI 10- 6 - Fixed bridge

0203250

<https://www.phoenixcontact.com/in/products/0203250>



Fixed bridge, pitch: 6.2 mm, number of positions: 10, color: silver

 Max. current carrying capacity: 41 A


FB 3- 6-EX - Fixed bridge

0201469

<https://www.phoenixcontact.com/in/products/0201469>



Fixed bridge, pitch: 6.2 mm, number of positions: 3, color: silver

 Max. current carrying capacity: 41 A

UK 5 N BU - Feed-through terminal block

3004388

<https://www.phoenixcontact.com/in/products/3004388>




FB 2- 6-EX - Fixed bridge

0201456

<https://www.phoenixcontact.com/in/products/0201456>



Fixed bridge, pitch: 6.2 mm, number of positions: 2, color: silver

 Max. current carrying capacity: 41 A


FB 5- 6 - Fixed bridge

0201029

<https://www.phoenixcontact.com/in/products/0201029>



Fixed bridge, pitch: 6.2 mm, number of positions: 5, color: silver

 Max. current carrying capacity: 41 A

UK 5 N BU - Feed-through terminal block

3004388

<https://www.phoenixcontact.com/in/products/3004388>




FBI 100- 6 - Fixed bridge

0201650

<https://www.phoenixcontact.com/in/products/0201650>



Fixed bridge, pitch: 6.2 mm, number of positions: 100, color: silver

 Max. current carrying capacity: 41 A


FBI 20- 6 - Fixed bridge

0201867

<https://www.phoenixcontact.com/in/products/0201867>



Fixed bridge, pitch: 6.2 mm, number of positions: 20, color: silver

 Max. current carrying capacity: 41 A

UK 5 N BU - Feed-through terminal block

3004388

<https://www.phoenixcontact.com/in/products/3004388>




FB 10- 6-EX - Fixed bridge

0201281

<https://www.phoenixcontact.com/in/products/0201281>



Fixed bridge, pitch: 6.2 mm, number of positions: 10, color: silver

 Max. current carrying capacity: 41 A


FB 10- 6 - Fixed bridge

0201184

<https://www.phoenixcontact.com/in/products/0201184>



Fixed bridge, pitch: 6.2 mm, number of positions: 10, color: silver

 Max. current carrying capacity: 41 A

UK 5 N BU - Feed-through terminal block

3004388

<https://www.phoenixcontact.com/in/products/3004388>



EB 2- 6 - Insertion bridge

0201155

<https://www.phoenixcontact.com/in/products/0201155>

Insertion bridge, pitch: 6.2 mm, number of positions: 2, color: gray



 Max. current carrying capacity: 32 A

EB 3- 6 - Insertion bridge

0201142

<https://www.phoenixcontact.com/in/products/0201142>

Insertion bridge, pitch: 6.2 mm, number of positions: 3, color: gray



 Max. current carrying capacity: 32 A

UK 5 N BU - Feed-through terminal block

3004388

<https://www.phoenixcontact.com/in/products/3004388>




EB 10- 6 - Insertion bridge

0201139

<https://www.phoenixcontact.com/in/products/0201139>



Insertion bridge, pitch: 6.2 mm, number of positions: 10, color: gray

 Max. current carrying capacity: 32 A


USB RJ 2-7 - Switching jumper

2305538

<https://www.phoenixcontact.com/in/products/2305538>



Switching jumper, number of positions: 2, color: silver

 Max. current carrying capacity: 34 A

UK 5 N BU - Feed-through terminal block

3004388

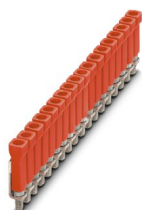
<https://www.phoenixcontact.com/in/products/3004388>




LB 100-6 RD - Bridge

0202316

<https://www.phoenixcontact.com/in/products/0202316>



Bridge, number of positions: 100, color: red

 Max. current carrying capacity: 32 A

LB 10-6 RD - Bridge

0202293

<https://www.phoenixcontact.com/in/products/0202293>



Bridge, pitch: 6 mm, number of positions: 10, color: red

 Max. current carrying capacity: 32 A

UK 5 N BU - Feed-through terminal block



3004388

<https://www.phoenixcontact.com/in/products/3004388>

D-UK 4/10 - End cover

3003020

<https://www.phoenixcontact.com/in/products/3003020>

End cover, length: 42.5 mm, width: 1.8 mm, height: 35.9 mm, color: gray



D-UK 4/10 BU - End cover

3003101

<https://www.phoenixcontact.com/in/products/3003101>

End cover, length: 42.5 mm, width: 1.8 mm, height: 47 mm, color: blue



UK 5 N BU - Feed-through terminal block

3004388

<https://www.phoenixcontact.com/in/products/3004388>

WS 3- 6 - Warning label

1004115

<https://www.phoenixcontact.com/in/products/1004115>

Warning plate, with 2 plastic screws, across 3 terminal blocks, pitch 6 mm



WS 5- 6 - Warning label

1004403

<https://www.phoenixcontact.com/in/products/1004403>

Warning plate, with 2 plastic screws, across 5 terminal blocks, pitch 6 mm



UK 5 N BU - Feed-through terminal block

3004388

<https://www.phoenixcontact.com/in/products/3004388>



WS 4- 6 - Warning label

1004209

<https://www.phoenixcontact.com/in/products/1004209>

Warning plate, with 2 plastic screws, across 4 terminal blocks, pitch 6 mm



ZSR - Screw

2303608

<https://www.phoenixcontact.com/in/products/2303608>

Screw



UK 5 N BU - Feed-through terminal block

3004388

<https://www.phoenixcontact.com/in/products/3004388>



ZSR-EX - Screw

0200017

<https://www.phoenixcontact.com/in/products/0200017>

Screw



FB-150

METER - Fixed bridge

0201595

<https://www.phoenixcontact.com/in/products/0201595>



Cross connection rail, for fixed bridging of identical inputs and outputs, made of Cu, nickel-plated, 1 m long

UK 5 N BU - Feed-through terminal block

3004388

<https://www.phoenixcontact.com/in/products/3004388>



KSS 6 - Short-circuit connector

0301547

<https://www.phoenixcontact.com/in/products/0301547>



Short-circuit connector, pitch: 6 mm, number of positions: 2, color: black

KSS 3- 6 - Short-circuit connector

0309523

<https://www.phoenixcontact.com/in/products/0309523>



Short-circuit connector, pitch: 6 mm, number of positions: 3, color: black

UK 5 N BU - Feed-through terminal block

3004388

<https://www.phoenixcontact.com/in/products/3004388>



EA 5 - Cover

1024014

<https://www.phoenixcontact.com/in/products/1024014>

Cover, material: ABS, color: transparent



EA 5-WS - Cover

1024085

<https://www.phoenixcontact.com/in/products/1024085>

Single covers, for covering one terminal block, with black symbol (lightning flash)
snap fit, color: transparent/yellow



UK 5 N BU - Feed-through terminal block

3004388

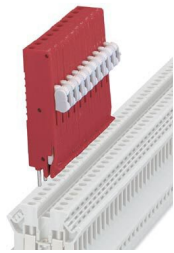
<https://www.phoenixcontact.com/in/products/3004388>



PS-UK 2,5 B/Z-6 - Test plugs

3001239

<https://www.phoenixcontact.com/in/products/3001239>



Test plugs, number of positions: 1, color: red

PS-UK 2,5 B/E - Test plugs

3001132

<https://www.phoenixcontact.com/in/products/3001132>



Test plugs, number of positions: 1, color: red

UK 5 N BU - Feed-through terminal block

3004388

<https://www.phoenixcontact.com/in/products/3004388>



RPS - Reducing plug

0201647

<https://www.phoenixcontact.com/in/products/0201647>



Reducing plug, number of positions: 1, color: gray

STL 35/ 5 - Step bracket

0204107

<https://www.phoenixcontact.com/in/products/0204107>



Step bracket, pitch: 5 mm, number of positions: 2, color: silver

UK 5 N BU - Feed-through terminal block

3004388

<https://www.phoenixcontact.com/in/products/3004388>



STL 10N/5N - Step bracket

0204110

<https://www.phoenixcontact.com/in/products/0204110>



Step bracket, pitch: 5 mm, number of positions: 2, color: silver

TS-K - Separating plate

1302215

<https://www.phoenixcontact.com/in/products/1302215>



Separating plate, length: 22 mm, width: 0.5 mm, height: 22 mm, color: gray

UK 5 N BU - Feed-through terminal block

3004388

<https://www.phoenixcontact.com/in/products/3004388>



ATP-UK - Partition plate

3003224

<https://www.phoenixcontact.com/in/products/3003224>



Partition plate, length: 56 mm, width: 1.5 mm, height: 45.7 mm, color: gray

SF-SL 0,6X3,5-100 S-VDE - Screwdriver

1212587

<https://www.phoenixcontact.com/in/products/1212587>



Actuation tool, for ST terminal blocks, VDE insulated, with slimmer insulation integrated in the blade, also suitable for use as a bladed screwdriver, size: 0.6 x 3.5 x 100 mm, 2-component grip, with non-slip grip

UK 5 N BU - Feed-through terminal block

3004388

<https://www.phoenixcontact.com/in/products/3004388>



NS 32 PERF 2000MM-VPE 10 - DIN rail perforated

1201002

<https://www.phoenixcontact.com/in/products/1201002>



DIN rail perforated, acc. to EN 60715, material: Steel, galvanized, passivated with a thick layer, G profile, color: silver, Pack of 10 (20 m)

NS 32 UNPERF 2000MM-VPE 10 - DIN rail, unperforated

1201015

<https://www.phoenixcontact.com/in/products/1201015>



DIN rail, unperforated, acc. to EN 60715, material: Steel, galvanized, passivated with a thick layer, G profile, color: silver, Pack of 10 (20 m)

UK 5 N BU - Feed-through terminal block

3004388

<https://www.phoenixcontact.com/in/products/3004388>



NS 35/ 7,5 PERF 2000MM - DIN rail perforated

0801733

<https://www.phoenixcontact.com/in/products/0801733>



DIN rail perforated, acc. to EN 60715, material: Steel, galvanized, passivated with a thick layer, Standard profile, color: silver, Pack of 25 (50 m)

NS 35/ 7,5 UNPERF 2000MM - DIN rail, unperforated

0801681

<https://www.phoenixcontact.com/in/products/0801681>



DIN rail, unperforated, acc. to EN 60715, material: Steel, galvanized, passivated with a thick layer, Standard profile, color: silver, Pack of 25 (50 m)

UK 5 N BU - Feed-through terminal block

3004388

<https://www.phoenixcontact.com/in/products/3004388>



NS 35/ 7,5 WH PERF 2000MM - DIN rail perforated

1204119

<https://www.phoenixcontact.com/in/products/1204119>



DIN rail perforated, acc. to EN 60715, material: Steel, Galvanized, white passivated, Standard profile, color: silver, Pack of 25 (50 m)

NS 35/ 7,5 WH UNPERF 2000MM-VPE 10 - DIN rail, unperforated

1204122

<https://www.phoenixcontact.com/in/products/1204122>



DIN rail, unperforated, acc. to EN 60715, material: Steel, Galvanized, white passivated, Standard profile, color: silver, Pack of 10 (20 m)

UK 5 N BU - Feed-through terminal block

3004388

<https://www.phoenixcontact.com/in/products/3004388>



NS 35/ 7,5 AL UNPERF 2000MM - DIN rail, unperforated

0801704

<https://www.phoenixcontact.com/in/products/0801704>



DIN rail, unperforated, acc. to EN 60715, material: Aluminum, uncoated, Standard profile, color: silver, Pack of 25 (50 m)

NS 35/ 7,5 ZN PERF 2000MM - DIN rail perforated

1206421

<https://www.phoenixcontact.com/in/products/1206421>



DIN rail perforated, acc. to EN 60715, material: Steel, galvanized, Standard profile, color: silver, Pack of 25 (50 m)

UK 5 N BU - Feed-through terminal block

3004388

<https://www.phoenixcontact.com/in/products/3004388>



NS 35/ 7,5 ZN UNPERF 2000MM - DIN rail, unperforated

1206434

<https://www.phoenixcontact.com/in/products/1206434>



DIN rail, unperforated, acc. to EN 60715, material: Steel, galvanized, Standard profile, color: silver, Pack of 25 (50 m)

NS 35/ 7,5 CU UNPERF 2000MM-VPE 10 - DIN rail, unperforated

0801762

<https://www.phoenixcontact.com/in/products/0801762>



DIN rail, unperforated, acc. to EN 60715, material: Copper, uncoated, Standard profile, color: copper-colored, Pack of 10 (20 m)

UK 5 N BU - Feed-through terminal block

3004388

<https://www.phoenixcontact.com/in/products/3004388>



NS 35/ 7,5 CAP - End cap

1206560

<https://www.phoenixcontact.com/in/products/1206560>

DIN rail end piece, for DIN rail NS 35/7.5



NS 35/15 PERF 2000MM - DIN rail perforated

1201730

<https://www.phoenixcontact.com/in/products/1201730>



DIN rail perforated, similar to EN 60715, material: Steel, galvanized, passivated with a thick layer, Standard profile, color: silver, Pack of 25 (50 m)

UK 5 N BU - Feed-through terminal block

3004388

<https://www.phoenixcontact.com/in/products/3004388>



NS 35/15 UNPERF 2000MM - DIN rail, unperforated

1201714

<https://www.phoenixcontact.com/in/products/1201714>



DIN rail, unperforated, similar to EN 60715, material: Steel, galvanized, passivated with a thick layer, Standard profile, color: silver, Pack of 25 (50 m)

NS 35/15 WH PERF 2000MM - DIN rail perforated

0806602

<https://www.phoenixcontact.com/in/products/0806602>



DIN rail perforated, similar to EN 60715, material: Steel, Galvanized, white passivated, Standard profile, color: white, Pack of 25 (50 m)

UK 5 N BU - Feed-through terminal block

3004388

<https://www.phoenixcontact.com/in/products/3004388>



NS 35/15 WH UNPERF 2000MM-VPE 10 - DIN rail, unperforated

1204135

<https://www.phoenixcontact.com/in/products/1204135>



DIN rail, unperforated, similar to EN 60715, material: Steel, Galvanized, white passivated, Standard profile, color: silver, Pack of 10 (20 m)

NS 35/15 AL UNPERF 2000MM - DIN rail, unperforated

1201756

<https://www.phoenixcontact.com/in/products/1201756>



DIN rail, unperforated, similar to EN 60715, material: Aluminum, uncoated, Standard profile, color: silver

UK 5 N BU - Feed-through terminal block

3004388

<https://www.phoenixcontact.com/in/products/3004388>



NS 35/15 ZN PERF 2000MM - DIN rail perforated

1206599

<https://www.phoenixcontact.com/in/products/1206599>



DIN rail perforated, similar to EN 60715, material: Steel, galvanized, Standard profile, color: silver, Pack of 25 (50 m)

NS 35/15 ZN UNPERF 2000MM - DIN rail, unperforated

1206586

<https://www.phoenixcontact.com/in/products/1206586>



DIN rail, unperforated, similar to EN 60715, material: Steel, galvanized, Standard profile, color: silver, Pack of 25 (50 m)

UK 5 N BU - Feed-through terminal block

3004388

<https://www.phoenixcontact.com/in/products/3004388>



NS 35/15 CU UNPERF 2000MM-VPE 10 - DIN rail, unperforated

1201895

<https://www.phoenixcontact.com/in/products/1201895>



DIN rail, unperforated, similar to EN 60715, material: Copper, uncoated, Standard profile, color: copper-colored, Pack of 10 (20 m)

NS 35/15 CAP - End cap

1206573

<https://www.phoenixcontact.com/in/products/1206573>

DIN rail end piece, for DIN rail NS 35/15



UK 5 N BU - Feed-through terminal block

3004388

<https://www.phoenixcontact.com/in/products/3004388>



NS 35/15-2,3 UNPERF 2000MM-VPE 10 - DIN rail, unperforated

1201798

<https://www.phoenixcontact.com/in/products/1201798>



DIN rail, unperforated, acc. to EN 60715, material: Steel, galvanized, passivated with a thick layer, Standard profile 2.3 mm, color: silver, Pack of 10 (20 m)

ZB 6:UNBEDRUCKT - Zack marker strip

1051003

<https://www.phoenixcontact.com/in/products/1051003>



Zack marker strip, Strip, white, unlabeled, can be labeled with: PLOTMARK, CMS-P1-PLOTTER, mounting type: snapped, for terminal block width: 6.2 mm, lettering field size: 6.15 x 10.5 mm, Number of individual labels: 10

UK 5 N BU - Feed-through terminal block

3004388

<https://www.phoenixcontact.com/in/products/3004388>



ZB 6 CUS - Zack marker strip

0824992

<https://www.phoenixcontact.com/in/products/0824992>



Zack marker strip, can be ordered: Strip, white, labeled according to customer specifications, mounting type: snap into tall marker groove, for terminal block width: 6.2 mm, lettering field size: 6.15 x 10.5 mm, Number of individual labels: 10

ZB 6,LGS:FORTL.ZAHLEN - Zack marker strip

1051016

<https://www.phoenixcontact.com/in/products/1051016>



Zack marker strip, Strip, white, labeled, can be labeled with: CMS-P1-PLOTTER, printed horizontally: consecutive numbers 1 ... 10, 11 ... 20, etc. up to 491 ... 500, mounting type: snapped, for terminal block width: 6.2 mm, lettering field size: 6.15 x 10.5 mm, Number of individual labels: 10

UK 5 N BU - Feed-through terminal block

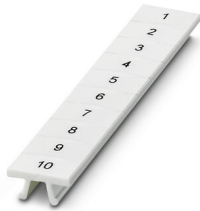
3004388

<https://www.phoenixcontact.com/in/products/3004388>

ZB 6,QR:FORTL.ZAHLEN - Zack marker strip

1051029

<https://www.phoenixcontact.com/in/products/1051029>



Zack marker strip, Strip, white, labeled, can be labeled with: CMS-P1-PLOTTER, Printed vertically: consecutive numbers 1 ... 10, 11 ... 20, etc. up to 491 ... 500, mounting type: snapped, for terminal block width: 6.2 mm, lettering field size: 6.15 x 10.5 mm, Number of individual labels: 10

ZB 6,LGS:GLEICHE ZAHLEN - Zack marker strip

1051032

<https://www.phoenixcontact.com/in/products/1051032>



Zack marker strip, Strip, white, labeled, can be labeled with: CMS-P1-PLOTTER, printed horizontally: Identical numbers 1 or 2, etc. up to 100, mounting type: snapped, for terminal block width: 6.2 mm, lettering field size: 6.15 x 10.5 mm, Number of individual labels: 10

UK 5 N BU - Feed-through terminal block

3004388

<https://www.phoenixcontact.com/in/products/3004388>

ZB 6,LGS:L1-N,PE - Marker for terminal blocks

1051414

<https://www.phoenixcontact.com/in/products/1051414>



Marker for terminal blocks, Strip, white, labeled, can be labeled with: CMS-P1-PLOTTER, horizontal: L1, L2, L3, N, PE, L1, L2, L3, N, PE, mounting type: snapped, for terminal block width: 6.2 mm, lettering field size: 6.15 x 10.5 mm, Number of individual labels: 10

ZB 6,LGS:U-N - Marker for terminal blocks

1051430

<https://www.phoenixcontact.com/in/products/1051430>



Marker for terminal blocks, Strip, white, labeled, can be labeled with: CMS-P1-PLOTTER, printed horizontally: U, V, W, N, GND, U, V, W, N, GND, mounting type: snapped, for terminal block width: 6.2 mm, lettering field size: 6.15 x 10.5 mm, Number of individual labels: 10

UK 5 N BU - Feed-through terminal block



3004388

<https://www.phoenixcontact.com/in/products/3004388>

UC-TM 6 - Marker for terminal blocks

0818085

<https://www.phoenixcontact.com/in/products/0818085>



Marker for terminal blocks, Sheet, white, unlabeled, can be labeled with: BLUEMARK ID COLOR, BLUEMARK ID, BLUEMARK CLED, PLOTMARK, CMS-P1-PLOTTER, mounting type: snapped, for terminal block width: 6.2 mm, lettering field size: 5.6 x 10.5 mm, Number of individual labels: 80

UC-TM 6 CUS - Marker for terminal blocks

0824589

<https://www.phoenixcontact.com/in/products/0824589>



Marker for terminal blocks, can be ordered: by sheet, white, labeled according to customer specifications, mounting type: snap into tall marker groove, for terminal block width: 6.2 mm, lettering field size: 5.6 x 10.5 mm, Number of individual labels: 80

UK 5 N BU - Feed-through terminal block

3004388

<https://www.phoenixcontact.com/in/products/3004388>



UCT-TM 6 - Marker for terminal blocks

0828736

<https://www.phoenixcontact.com/in/products/0828736>



Marker for terminal blocks, Sheet, white, unlabeled, can be labeled with: TOPMARK NEO, TOPMARK LASER, BLUEMARK ID COLOR, BLUEMARK ID, BLUEMARK CLED, THERMOMARK PRIME, THERMOMARK CARD 2.0, THERMOMARK CARD, mounting type: snapped, for terminal block width: 6.2 mm, lettering field size: 5.6 x 10.5 mm, Number of individual labels: 60

UCT-TM 6 CUS - Marker for terminal blocks

0829602

<https://www.phoenixcontact.com/in/products/0829602>



Marker for terminal blocks, can be ordered: by sheet, white, labeled according to customer specifications, mounting type: snap into tall marker groove, for terminal block width: 6.2 mm, lettering field size: 5.6 x 10.5 mm, Number of individual labels: 60

UK 5 N BU - Feed-through terminal block

3004388

<https://www.phoenixcontact.com/in/products/3004388>



MPS-MT - Test plugs

0201744

<https://www.phoenixcontact.com/in/products/0201744>



Test plugs, with solder connection up to 1 mm² conductor cross section, number of positions: 1, color: gray

MPS-IH WH - Insulating sleeve

0201663

<https://www.phoenixcontact.com/in/products/0201663>

Insulating sleeve, color: white



UK 5 N BU - Feed-through terminal block

3004388

<https://www.phoenixcontact.com/in/products/3004388>



MPS-IH RD - Insulating sleeve

0201676

<https://www.phoenixcontact.com/in/products/0201676>

Insulating sleeve, color: red

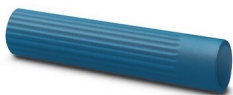


MPS-IH BU - Insulating sleeve

0201689

<https://www.phoenixcontact.com/in/products/0201689>

Insulating sleeve, color: blue



UK 5 N BU - Feed-through terminal block

3004388

<https://www.phoenixcontact.com/in/products/3004388>



MPS-IH YE - Insulating sleeve

0201692

<https://www.phoenixcontact.com/in/products/0201692>

Insulating sleeve, color: yellow



MPS-IH GN - Insulating sleeve

0201702

<https://www.phoenixcontact.com/in/products/0201702>

Insulating sleeve, color: green



UK 5 N BU - Feed-through terminal block

3004388

<https://www.phoenixcontact.com/in/products/3004388>



MPS-IH GY - Insulating sleeve

0201728

<https://www.phoenixcontact.com/in/products/0201728>

Insulating sleeve, color: gray



MPS-IH BK - Insulating sleeve

0201731

<https://www.phoenixcontact.com/in/products/0201731>

Insulating sleeve, color: black



UK 5 N BU - Feed-through terminal block

3004388

<https://www.phoenixcontact.com/in/products/3004388>

CLIPFIX 35 - End clamp

3022218

<https://www.phoenixcontact.com/in/products/3022218>



Quick mounting end clamp for NS 35/7,5 DIN rail or NS 35/15 DIN rail, with marking option, width: 9.5 mm, color: gray

CLIPFIX 35-5 - End clamp

3022276

<https://www.phoenixcontact.com/in/products/3022276>



Quick mounting end clamp for NS 35/7,5 DIN rail or NS 35/15 DIN rail, with marking option, with parking option for FBS...5, FBS...6, KSS 5, KSS 6, width: 5.15 mm, color: gray

UK 5 N BU - Feed-through terminal block

3004388

<https://www.phoenixcontact.com/in/products/3004388>

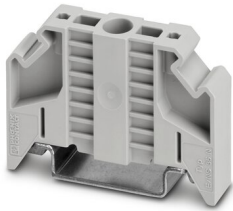


E/NS 35 N - End clamp

0800886

<https://www.phoenixcontact.com/in/products/0800886>

End clamp, width: 9.5 mm, color: gray



E/UK - End clamp

1201442

<https://www.phoenixcontact.com/in/products/1201442>

End clamp, material: PA, color: gray, Mounting on a DIN rail NS 32 or NS 35



UK 5 N BU - Feed-through terminal block

3004388

<https://www.phoenixcontact.com/in/products/3004388>



E/UK 1 - End clamp

1201413

<https://www.phoenixcontact.com/in/products/1201413>



End clamps, for supporting the ends of double-level and three-level terminal blocks, width: 10 mm, color: gray

PSBJ 3/13/4 - Female test connector

0201304

<https://www.phoenixcontact.com/in/products/0201304>



Female test connector, number of positions: 1, color: silver

UK 5 N BU - Feed-through terminal block

3004388

<https://www.phoenixcontact.com/in/products/3004388>



PSB 3/10/4 - Female test connector

0601292

<https://www.phoenixcontact.com/in/products/0601292>

Female test connector, number of positions: 1, color: silver



Phoenix Contact 2023 © - all rights reserved

<https://www.phoenixcontact.com>

PHOENIX CONTACT (I) Pvt. Ltd.

A-58/2, Okhla Industrial Area, Phase - II, New Delhi-110 020

+91.1275.71420

info@phoenixcontact.co.in