

# TB 4 EI YE - Feed-through terminal block



3000856

<https://www.phoenixcontact.com/in/products/3000856>

Please be informed that the data shown in this PDF document is generated from our Online Catalog. Please find the complete data in the user documentation. Our General Terms of Use for Downloads are valid.



Feed-through terminal block, nom. voltage: 800 V, nominal current: 32 A, number of connections: 2, connection method: Screw connection, Rated cross section: 4 mm<sup>2</sup>, cross section: 0.5 mm<sup>2</sup> - 6 mm<sup>2</sup>, mounting type: NS 35/7,5, NS 35/15, NS 32, color: yellow

## Commercial Data

Item number	3000856
Packing unit	50 pc
Minimum order quantity	50 pc
Sales Key	BE1
Product Key	BE1411
GTIN	4055626646008
Weight per Piece (including packing)	22.22 g
Weight per Piece (excluding packing)	22.22 g
Customs tariff number	39269098
Country of origin	IN

# TB 4 EI YE - Feed-through terminal block



3000856

<https://www.phoenixcontact.com/in/products/3000856>

## Technical Data

### Product properties

Product type	Feed-through terminal block
Number of connections	2
Number of rows	1
Potentials	1

### Insulation characteristics

Overvoltage category	III
Degree of pollution	3

### Electrical properties

Rated surge voltage	8 kV
Maximum power dissipation for nominal condition	1.02 W

### Connection data

Number of connections per level	2
Nominal cross section	4 mm <sup>2</sup>

### Level 1 above 1 below 1

Screw thread	M3
Tightening torque	0.5 ... 0.6 Nm
Stripping length	8 mm
Internal cylindrical gage	A4
Connection in acc. with standard	IEC 60947-7-1
Conductor cross section rigid	0.5 mm <sup>2</sup> ... 6 mm <sup>2</sup>
Cross section AWG	20 ... 10 (converted acc. to IEC)
Conductor cross section flexible	0.5 mm <sup>2</sup> ... 4 mm <sup>2</sup>
Conductor cross section, flexible [AWG]	20 ... 12 (converted acc. to IEC)
Conductor cross-section flexible (ferrule without plastic sleeve)	0.5 mm <sup>2</sup> ... 4 mm <sup>2</sup>
Flexible conductor cross section (ferrule with plastic sleeve)	0.5 mm <sup>2</sup> ... 2.5 mm <sup>2</sup>
2 conductors with same cross section, solid	0.5 mm <sup>2</sup> ... 1.5 mm <sup>2</sup>
2 conductors with the same cross-section AWG rigid	50 ... 16 (converted acc. to IEC)
2 conductors with same cross section, flexible	0.5 mm <sup>2</sup> ... 1.5 mm <sup>2</sup>
2 conductors with the same cross-section AWG flexible	20 ... 16 (converted acc. to IEC)
2 conductors with same cross section, flexible, with ferrule without plastic sleeve	0.5 mm <sup>2</sup> ... 1.5 mm <sup>2</sup>
Nominal current	32 A
Maximum load current	32 A
Nominal voltage	800 V (in the case of enclosed clamping space)
Nominal cross section	4 mm <sup>2</sup>

### Dimensions

Width	6.2 mm
-------	--------

# TB 4 EI YE - Feed-through terminal block



3000856

<https://www.phoenixcontact.com/in/products/3000856>

End cover width	1.8 mm
Height NS 35/15	54.5 mm
Height NS 35/7,5	47 mm
Height	1.85 "
Height NS 32	52 mm
Length	42.5 mm

## Material specifications

Color	yellow
Flammability rating according to UL 94	V2
Insulating material group	I
Insulating material	PA
Temperature index of insulation material (DIN EN 60216-1 (VDE 0304-21))	125 °C
Relative insulation material temperature index (Elec., UL 746 B)	125 °C

## Electrical tests

### Surge voltage test

Test voltage setpoint	9.8 kV
Result	Test passed

### Temperature-rise test

Requirement temperature-rise test	Increase in temperature $\leq 45$ K
Result	Test passed
Short-time withstand current 4 mm <sup>2</sup>	0.48 kA
Result	Test passed

### Power-frequency withstand voltage

Test voltage setpoint	2 kV
Result	Test passed

## Mechanical properties

### Mechanical data

Open side panel	Yes
-----------------	-----

## Mechanical tests

### Mechanical strength

Result	Test passed
--------	-------------

### Attachment on the carrier

DIN rail/fixing support	NS 32/NS 35
Test force setpoint	1 N
Result	Test passed

### Test for conductor damage and slackening

# TB 4 EI YE - Feed-through terminal block



3000856

<https://www.phoenixcontact.com/in/products/3000856>

Rotation speed	10 rpm
Revolutions	135
Conductor cross section/weight	0.5 mm <sup>2</sup> / 0.3 kg
	4 mm <sup>2</sup> / 0.9 kg
	6 mm <sup>2</sup> / 1.4 kg
Result	Test passed

## Environmental and real-life conditions

### Needle-flame test

Time of exposure	30 s
Result	Test passed

### Oscillation/broadband noise

Specification	DIN EN 50155 (VDE 0115-200):2008-03
Spectrum	Service life test category 1, class B, body mounted
Frequency	$f_1 = 5 \text{ Hz}$ to $f_2 = 150 \text{ Hz}$
ASD level	1.857 (m/s <sup>2</sup> )/Hz
Acceleration	0.8g
Test duration per axis	5 h
Test directions	X-, Y- and Z-axis
Result	Test passed

### Shocks

Specification	DIN EN 50155 (VDE 0115-200):2008-03
Pulse shape	Half-sine
Acceleration	5g
Shock duration	30 ms
Number of shocks per direction	3
Test directions	X-, Y- and Z-axis (pos. and neg.)
Result	Test passed

### Ambient conditions

Ambient temperature (operation)	-60 °C ... 105 °C (max. short-term operating temperature RTI Elec.)
Ambient temperature (storage/transport)	-25 °C ... 60 °C (for a short time, not exceeding 24 h, -60 °C to +70 °C)
Ambient temperature (assembly)	-5 °C ... 70 °C
Ambient temperature (actuation)	-5 °C ... 70 °C
Permissible humidity (storage/transport)	30 % ... 70 %

## Standards and regulations

Connection in acc. with standard	IEC 60947-7-1
----------------------------------	---------------

## Mounting

Mounting type	NS 35/7,5
	NS 35/15

# TB 4 EI YE - Feed-through terminal block

3000856

<https://www.phoenixcontact.com/in/products/3000856>



---

NS 32

# TB 4 EI YE - Feed-through terminal block

3000856

<https://www.phoenixcontact.com/in/products/3000856>



## Drawings

### Circuit diagram



# TB 4 EI YE - Feed-through terminal block



3000856

<https://www.phoenixcontact.com/in/products/3000856>

## Approvals



**EAC**

Approval ID: RU C-DE.A\*30.B.01742



**cULus Recognized**

Approval ID: E60425

	Nominal Voltage $U_N$	Nominal Current $I_N$	Cross Section AWG	Cross Section $\text{mm}^2$
Use group B				
	600 V	30 A	20 - 10	-
Use group C				
	600 V	30 A	20 - 10	-

# TB 4 EI YE - Feed-through terminal block



3000856

<https://www.phoenixcontact.com/in/products/3000856>

## Classifications

### ECLASS

ECLASS-11.0	27141120
ECLASS-13.0	27250101

### ETIM

ETIM 7.0	EC000897
----------	----------

### UNSPSC

UNSPSC 21.0	39121410
-------------	----------



# TB 4 EI YE - Feed-through terminal block



3000856

<https://www.phoenixcontact.com/in/products/3000856>

## Environmental Product Compliance

China RoHS	Environmentally friendly use period: unlimited = EFUP-e
	No hazardous substances above threshold values

# TB 4 EI YE - Feed-through terminal block



3000856

<https://www.phoenixcontact.com/in/products/3000856>

## Accessories

### SCBI 10-6 - Fixed bridge

3246120

<https://www.phoenixcontact.com/in/products/3246120>

Fixed bridge, number of positions: 10, color: silver



---

### INB 10-6 - Insertion bridge

3246188

<https://www.phoenixcontact.com/in/products/3246188>

Insertion bridge, Bridging in the terminal point, pitch: 6 mm, number of positions: 10, color: gray



# TB 4 EI YE - Feed-through terminal block

3000856

<https://www.phoenixcontact.com/in/products/3000856>

## D-TB 4/10 E - End cover

3246104

<https://www.phoenixcontact.com/in/products/3246104>



End cover, length: 42.5 mm, width: 1.5 mm, height: 35.9 mm, color: dark gray

---

## TS-TB - Separating plate

3062838

<https://www.phoenixcontact.com/in/products/3062838>



Separating plate, for electrical isolation of neighboring bridges in the terminal center, length: 22 mm, height: 22 mm, color: dark gray

# TB 4 EI YE - Feed-through terminal block

3000856

<https://www.phoenixcontact.com/in/products/3000856>



## ATP-TB - Partition plate

3046272

<https://www.phoenixcontact.com/in/products/3046272>



Partition plate, length: 56 mm, width: 3 mm, height: 45.7 mm, color: dark gray

---

## TPS 3/10/4 - Female test connector

3246230

<https://www.phoenixcontact.com/in/products/3246230>



Female test connector, for 2.3 mm test plugs, for screwing into the bridge shaft, number of positions: 1, color: silver

# TB 4 EI YE - Feed-through terminal block

3000856

<https://www.phoenixcontact.com/in/products/3000856>



## SZS 0,6X3,5 VDE - Screwdriver

1212602

<https://www.phoenixcontact.com/in/products/1212602>



Screwdriver, slot-headed, VDE insulated, size: 0.6 x 3.5 x 100 mm, 2-component grip, with non-slip grip

---

## E/TB - End clamp

3246966

<https://www.phoenixcontact.com/in/products/3246966>



End clamp, for assembly on NS 32 or NS 35/7.5 DIN rail

# TB 4 EI YE - Feed-through terminal block

3000856

<https://www.phoenixcontact.com/in/products/3000856>



## NS 32 PERF 2000MM-VPE 10 - DIN rail perforated

1201002

<https://www.phoenixcontact.com/in/products/1201002>



DIN rail perforated, acc. to EN 60715, material: Steel, galvanized, passivated with a thick layer, G profile, color: silver, Pack of 10 (20 m)

---

## NS 32 UNPERF 2000MM-VPE 10 - DIN rail, unperforated

1201015

<https://www.phoenixcontact.com/in/products/1201015>



DIN rail, unperforated, acc. to EN 60715, material: Steel, galvanized, passivated with a thick layer, G profile, color: silver, Pack of 10 (20 m)

## TB 4 EI YE - Feed-through terminal block

3000856

<https://www.phoenixcontact.com/in/products/3000856>



### MPS-MT - Test plugs

0201744

<https://www.phoenixcontact.com/in/products/0201744>



Test plugs, with solder connection up to 1 mm<sup>2</sup> conductor cross section, number of positions: 1, color: gray

---

### MPS-IH WH - Insulating sleeve

0201663

<https://www.phoenixcontact.com/in/products/0201663>

Insulating sleeve, color: white



# TB 4 EI YE - Feed-through terminal block

3000856

<https://www.phoenixcontact.com/in/products/3000856>



## MPS-IH RD - Insulating sleeve

0201676

<https://www.phoenixcontact.com/in/products/0201676>

Insulating sleeve, color: red



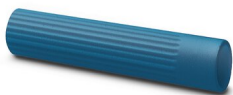
---

## MPS-IH BU - Insulating sleeve

0201689

<https://www.phoenixcontact.com/in/products/0201689>

Insulating sleeve, color: blue





# TB 4 EI YE - Feed-through terminal block

3000856

<https://www.phoenixcontact.com/in/products/3000856>



## MPS-IH YE - Insulating sleeve

0201692

<https://www.phoenixcontact.com/in/products/0201692>

Insulating sleeve, color: yellow



---

## MPS-IH GN - Insulating sleeve

0201702

<https://www.phoenixcontact.com/in/products/0201702>

Insulating sleeve, color: green



# TB 4 EI YE - Feed-through terminal block

3000856

<https://www.phoenixcontact.com/in/products/3000856>



## MPS-IH GY - Insulating sleeve

0201728

<https://www.phoenixcontact.com/in/products/0201728>

Insulating sleeve, color: gray



---

## MPS-IH BK - Insulating sleeve

0201731

<https://www.phoenixcontact.com/in/products/0201731>

Insulating sleeve, color: black



---

Phoenix Contact 2023 © - all rights reserved  
<https://www.phoenixcontact.com>

PHOENIX CONTACT (I) Pvt. Ltd.  
A-58/2, Okhla Industrial Area, Phase - II, New Delhi-110 020

+91.1275.71420  
[info@phoenixcontact.co.in](mailto:info@phoenixcontact.co.in)