

# RIF-0-RPT-12DC/ 1 - Relay Module



2903362

<https://www.phoenixcontact.com/in/products/2903362>

Please be informed that the data shown in this PDF document is generated from our Online Catalog. Please find the complete data in the user documentation. Our General Terms of Use for Downloads are valid.



Pre-assembled relay module with push-in connection, consisting of: relay base with ejector and power contact relay. Contact type: 1 N/O contact. Input voltage: 12 V DC

## Product Description

The pluggable electromechanical and solid-state relays in the RIFLINE complete product range and the base are recognized and approved in accordance with UL 508. The relevant approvals can be called up at the individual components in question.

## Commercial Data

Item number	2903362
Packing unit	10 pc
Minimum order quantity	10 pc
Sales Key	CK6
Product Key	CK6528
Catalog Page	Page 319 (C-5-2019)
GTIN	4046356731959
Weight per Piece (including packing)	24.68 g
Weight per Piece (excluding packing)	24.68 g
Customs tariff number	85364110
Country of origin	CZ

# RIF-0-RPT-12DC/ 1 - Relay Module

2903362

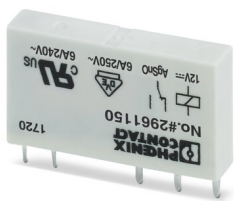
<https://www.phoenixcontact.com/in/products/2903362>

## Set consists of

### REL-MR- 12DC/21 - Single relay

2961150

<https://www.phoenixcontact.com/in/products/2961150>



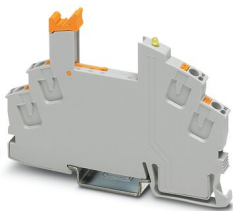
Plug-in miniature power relay, with power contact, 1 changeover contact, input voltage 12 V DC

---

### RIF-0-BPT/1 - Relay base

2901873

<https://www.phoenixcontact.com/in/products/2901873>



RIF-0... relay base, for miniature power relay with 1 N/O contact or solid-state relays of the same design, push-in connection, for mounting on NS 35/7,5

# RIF-0-RPT-12DC/ 1 - Relay Module



2903362

<https://www.phoenixcontact.com/in/products/2903362>

## Technical Data

### Product properties

Product type	Relay Module
Product family	RIFLINE complete
Application	Universal
Operating mode	100% operating factor
Mechanical service life	approx. $2 \times 10^7$ cycles

### Insulation characteristics

Insulation	safe isolation
------------	----------------

### Insulation characteristics

Insulation	safe isolation
Overvoltage category	III
Pollution degree	2

### Electrical properties

Service life electrical	see diagram
Maximum power dissipation for nominal condition	0.19 W
Test voltage (Winding/contact)	4 kV <sub>rms</sub> (50 Hz, 1 min., winding/contact)
Rated insulation voltage	250 V AC
Rated surge voltage	6 kV

### Input data

#### Coil side

Nominal input voltage $U_N$	12 V DC
Input voltage range	9.6 V DC ... 18 V DC (20 °C)
Input voltage range in reference to $U_N$	see diagram
Typical input current at $U_N$	16 mA
Typical response time	5 ms
Typical release time	8 ms
Coil voltage	12 V DC
Protective circuit	Freewheeling diode
Operating voltage display	Yellow LED

### Output data

#### Switching

Contact type	1 N/O contact
Type of switch contact	Single contact
Drive and function	monostable
Drive (polarity)	polarized
Contact material	AgSnO

# RIF-0-RPT-12DC/ 1 - Relay Module



2903362

<https://www.phoenixcontact.com/in/products/2903362>

Maximum switching voltage	250 V AC/DC
Minimum switching voltage	5 V (100 mA)
Limiting continuous current	6 A
Maximum inrush current	10 A (4 s)
Min. switching current	10 mA (12 V)
Interrupting rating (ohmic load) max.	140 W (24 V DC)
	20 W (48 V DC)
	18 W (60 V DC)
	23 W (110 V DC)
	40 W (220 V DC)
	1500 VA (250 V AC)
Utilization category CB Scheme (IEC 60947-5-1)	AC15, 3 A/250 V (N/O contact)
	AC15, 1 A/250 V (N/C contact)
	DC13, 1.5 A/24 V (N/O contact)
	DC13, 0.2 A/110 V (N/O contact)
	DC13, 0.1 A/220 V (N/O contact)

## Connection data

Connection method	Push-in connection
Stripping length	8 mm
Conductor cross section rigid	0.14 mm <sup>2</sup> ... 1.5 mm <sup>2</sup>
Conductor cross section flexible	0.14 mm <sup>2</sup> ... 1.5 mm <sup>2</sup>
	0.14 mm <sup>2</sup> ... 1.5 mm <sup>2</sup> (Ferrule with plastic sleeve)
Conductor cross section AWG	24 ... 16

## Dimensions

Width	6.2 mm
Height	93 mm
Depth	66 mm

## Material specifications

Flammability rating according to UL 94	V2 (Housing)
--	--------------

## Environmental and real-life conditions

### Ambient conditions

Degree of protection (Relay base)	IP20 (Relay base)
Degree of protection (Relay)	RT III (Relay)
Ambient temperature (operation)	-40 °C ... 60 °C
Ambient temperature (storage/transport)	-40 °C ... 85 °C

## Approvals

### Corrosive gas test

Identification	ISA-S71.04. G3 Harsh Group
	EN 60068-2-60

# RIF-0-RPT-12DC/ 1 - Relay Module



2903362

<https://www.phoenixcontact.com/in/products/2903362>

## Standards and regulations

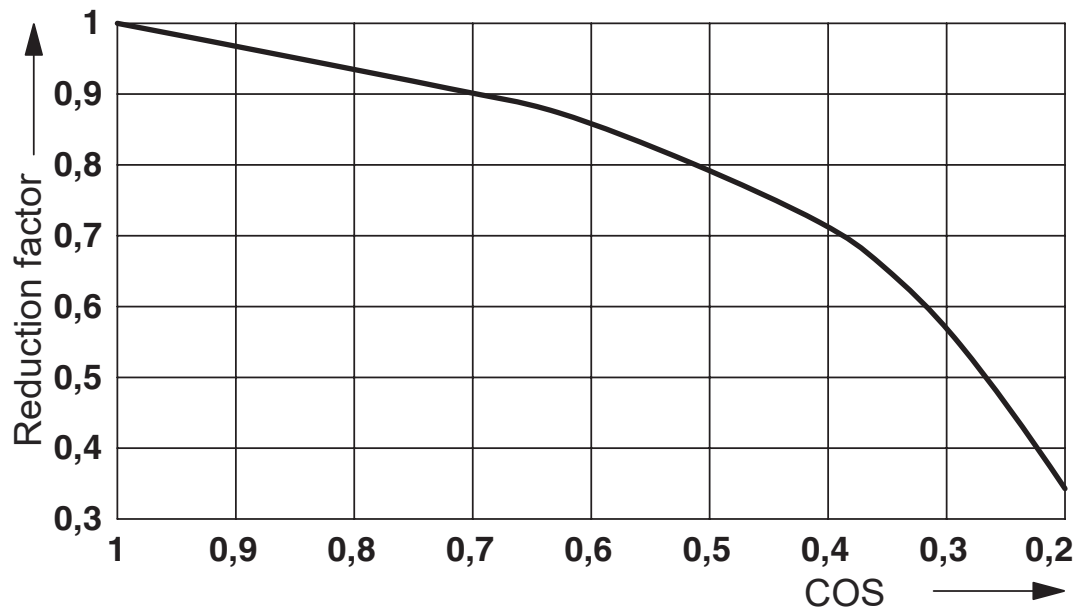
Standards/regulations	IEC 60947-5-1
-----------------------	---------------

## Mounting

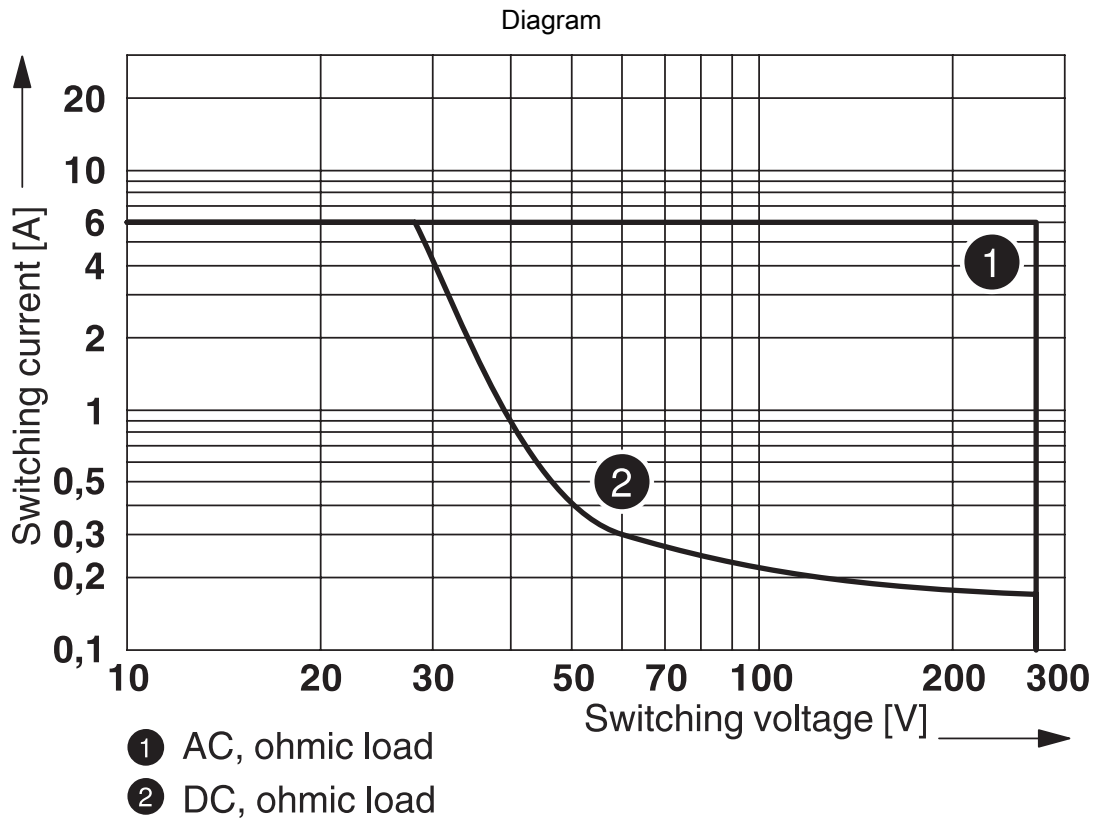
Mounting type	DIN rail mounting
Assembly instructions	in rows with zero spacing
Mounting position	any

## Drawings

Diagram

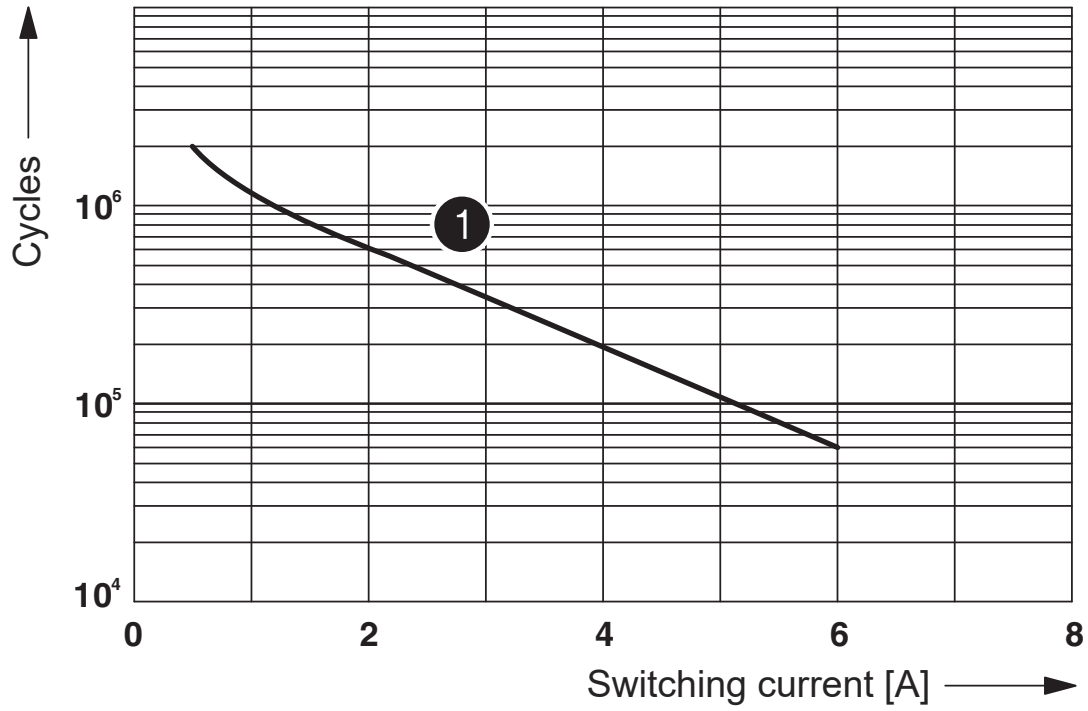


Service life reduction factor



Interrupting rating

Diagram



① 250 V AC, ohmic load

Electrical service life



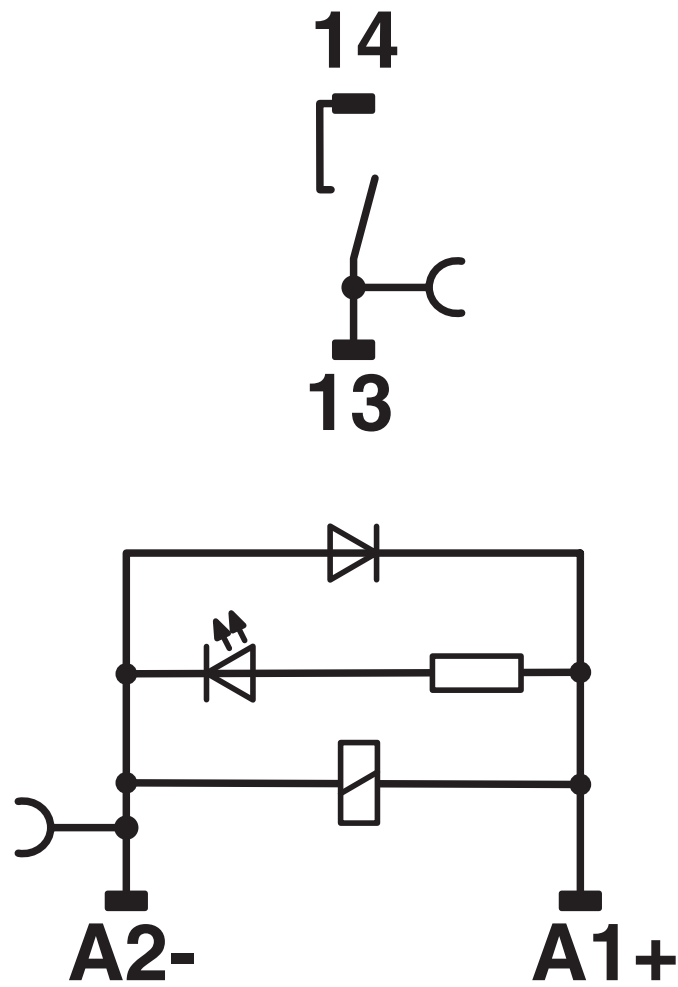
# RIF-0-RPT-12DC/ 1 - Relay Module

2903362

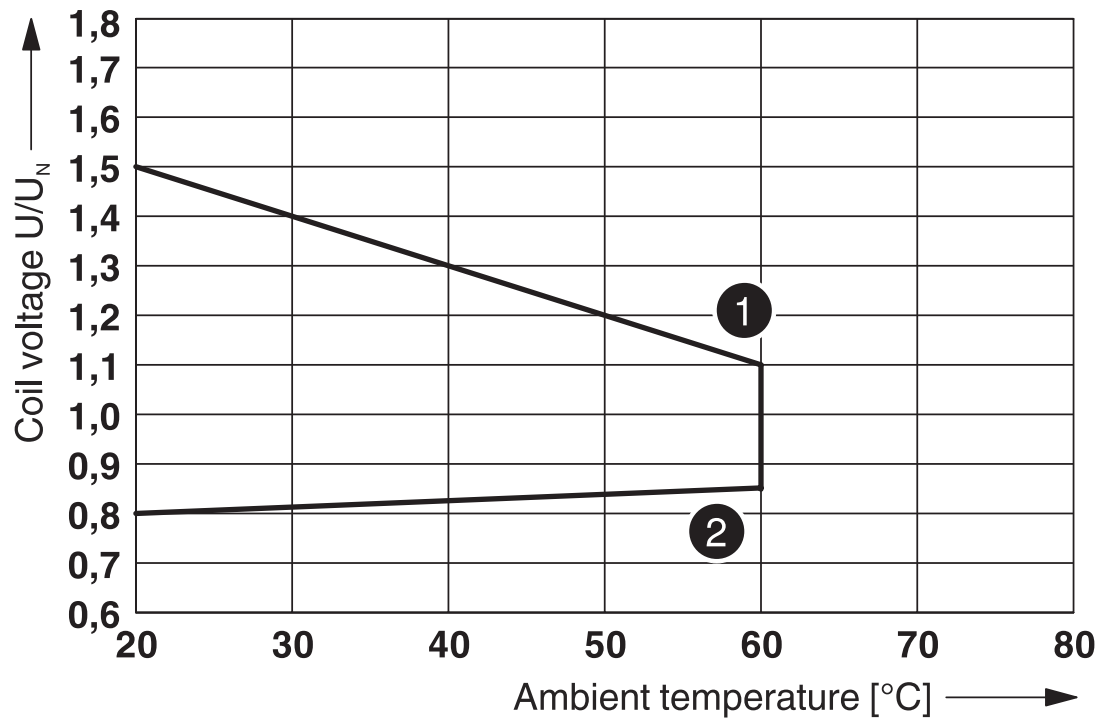
<https://www.phoenixcontact.com/in/products/2903362>



Circuit diagram



Diagram



- ① Maximum continuous voltage at limiting continuous current = 6 A
  - ② Minimum operate voltage
- For pre-excitation with  $U_N$  and limiting continuous current = 6 A

Operating voltage range

# RIF-0-RPT-12DC/ 1 - Relay Module



2903362

<https://www.phoenixcontact.com/in/products/2903362>

## Approvals



**EAC**

Approval ID: TR\_TS\_D\_00573\_c



**DNV GL**

Approval ID: TAA000018V



**DNV GL**

Approval ID: TAA000018V

# RIF-0-RPT-12DC/ 1 - Relay Module



2903362

<https://www.phoenixcontact.com/in/products/2903362>

## Classifications

### ECLASS

ECLASS-11.0	27371601
ECLASS-12.0	27371601
ECLASS-13.0	27371601

### ETIM

ETIM 8.0	EC001437
----------	----------

### UNSPSC

UNSPSC 21.0	39122300
-------------	----------

# RIF-0-RPT-12DC/ 1 - Relay Module



2903362

<https://www.phoenixcontact.com/in/products/2903362>

## Environmental Product Compliance

REACH SVHC	Lead 7439-92-1
China RoHS	Environmentally Friendly Use Period = 50 years
	For information on hazardous substances, refer to the manufacturer's declaration available under "Downloads"

# RIF-0-RPT-12DC/ 1 - Relay Module



2903362

<https://www.phoenixcontact.com/in/products/2903362>

## Accessories

### FBS 2-6 - Plug-in bridge

3030336

<https://www.phoenixcontact.com/in/products/3030336>



Plug-in bridge, pitch: 6.2 mm, number of positions: 2, color: red

---

### FBS 3-6 - Plug-in bridge

3030242

<https://www.phoenixcontact.com/in/products/3030242>



Plug-in bridge, pitch: 6.2 mm, number of positions: 3, color: red

# RIF-0-RPT-12DC/ 1 - Relay Module

2903362

<https://www.phoenixcontact.com/in/products/2903362>

## FBS 4-6 - Plug-in bridge

3030255

<https://www.phoenixcontact.com/in/products/3030255>



Plug-in bridge, pitch: 6.2 mm, number of positions: 4, color: red

---

## FBS 5-6 - Plug-in bridge

3030349

<https://www.phoenixcontact.com/in/products/3030349>



Plug-in bridge, pitch: 6.2 mm, number of positions: 5, color: red

# RIF-0-RPT-12DC/ 1 - Relay Module

2903362

<https://www.phoenixcontact.com/in/products/2903362>



## FBS 10-6 - Plug-in bridge

3030271

<https://www.phoenixcontact.com/in/products/3030271>



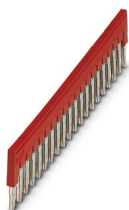
Plug-in bridge, pitch: 6.2 mm, number of positions: 10, color: red

---

## FBS 20-6 - Plug-in bridge

3030365

<https://www.phoenixcontact.com/in/products/3030365>



Plug-in bridge, pitch: 6.2 mm, number of positions: 20, color: red



# RIF-0-RPT-12DC/ 1 - Relay Module

2903362

<https://www.phoenixcontact.com/in/products/2903362>



## FBS 50-6 - Plug-in bridge

3032224

<https://www.phoenixcontact.com/in/products/3032224>



Plug-in bridge, pitch: 6.2 mm, number of positions: 50, color: red

---

## FBS 2-6 BU - Plug-in bridge

3036932

<https://www.phoenixcontact.com/in/products/3036932>



Plug-in bridge, pitch: 6.2 mm, number of positions: 2, color: blue

# RIF-0-RPT-12DC/ 1 - Relay Module

2903362

<https://www.phoenixcontact.com/in/products/2903362>



## FBS 3-6 BU - Plug-in bridge

3036945

<https://www.phoenixcontact.com/in/products/3036945>



Plug-in bridge, pitch: 6.2 mm, number of positions: 3, color: blue

---

## FBS 4-6 BU - Plug-in bridge

3036958

<https://www.phoenixcontact.com/in/products/3036958>



Plug-in bridge, pitch: 6.2 mm, number of positions: 4, color: blue

# RIF-0-RPT-12DC/ 1 - Relay Module

2903362

<https://www.phoenixcontact.com/in/products/2903362>



## FBS 5-6 BU - Plug-in bridge

3036961

<https://www.phoenixcontact.com/in/products/3036961>



Plug-in bridge, pitch: 6.2 mm, number of positions: 5, color: blue

---

## FBS 10-6 BU - Plug-in bridge

3032198

<https://www.phoenixcontact.com/in/products/3032198>



Plug-in bridge, pitch: 6.2 mm, number of positions: 10, color: blue

# RIF-0-RPT-12DC/ 1 - Relay Module

2903362

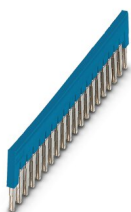
<https://www.phoenixcontact.com/in/products/2903362>



## FBS 20-6 BU - Plug-in bridge

3032208

<https://www.phoenixcontact.com/in/products/3032208>



Plug-in bridge, pitch: 6.2 mm, number of positions: 20, color: blue

---

## FBS 50-6 BU - Plug-in bridge

3032211

<https://www.phoenixcontact.com/in/products/3032211>



Plug-in bridge, pitch: 6.2 mm, number of positions: 50, color: blue

# RIF-0-RPT-12DC/ 1 - Relay Module

2903362

<https://www.phoenixcontact.com/in/products/2903362>

## FBS 2-6 GY - Plug-in bridge

3032237

<https://www.phoenixcontact.com/in/products/3032237>



Plug-in bridge, pitch: 6.2 mm, number of positions: 2, color: gray

---

## FBS 3-6 GY - Plug-in bridge

3032240

<https://www.phoenixcontact.com/in/products/3032240>



Plug-in bridge, pitch: 6.2 mm, number of positions: 3, color: gray

# RIF-0-RPT-12DC/ 1 - Relay Module

2903362

<https://www.phoenixcontact.com/in/products/2903362>

## FBS 4-6 GY - Plug-in bridge

3032279

<https://www.phoenixcontact.com/in/products/3032279>



Plug-in bridge, pitch: 6.2 mm, number of positions: 4, color: gray

---

## FBS 5-6 GY - Plug-in bridge

3032266

<https://www.phoenixcontact.com/in/products/3032266>



Plug-in bridge, pitch: 6.2 mm, number of positions: 5, color: gray

# RIF-0-RPT-12DC/ 1 - Relay Module

2903362

<https://www.phoenixcontact.com/in/products/2903362>



## FBS 10-6 GY - Plug-in bridge

3032253

<https://www.phoenixcontact.com/in/products/3032253>



Plug-in bridge, pitch: 6.2 mm, number of positions: 10, color: gray

---

## PLC-FA-5X20 - Fuse adapter

1186510

<https://www.phoenixcontact.com/in/products/1186510>



Safety plug adapter for use on a 6.2 mm PLC basic terminal block. For 5 x 20 mm fuses. Operating voltage: Universal. Without fuse failure indication.

# RIF-0-RPT-12DC/ 1 - Relay Module

2903362

<https://www.phoenixcontact.com/in/products/2903362>

## PLC-FA-I-5X20-12-24UC - Fuse adapter

1186499

<https://www.phoenixcontact.com/in/products/1186499>



Safety plug adapter for use on a 6.2 mm PLC basic terminal block. For 5 x 20 mm fuses. Operating voltage: 12 ... 24 V AC/DC. With LED for fuse failure indication.

---

## PLC-FA-I-5X20-120-230UC - Fuse adapter

1186508

<https://www.phoenixcontact.com/in/products/1186508>



Safety plug adapter for use on a 6.2 mm PLC basic terminal block. For 5 x 20 mm fuses. Operating voltage: 120 ... 230 V AC/DC. With LED for fuse failure indication.



# RIF-0-RPT-12DC/ 1 - Relay Module

2903362

<https://www.phoenixcontact.com/in/products/2903362>

## NS 35/ 7,5 PERF 2000MM - DIN rail perforated

0801733

<https://www.phoenixcontact.com/in/products/0801733>



DIN rail perforated, acc. to EN 60715, material: Steel, galvanized, passivated with a thick layer, Standard profile, color: silver, Pack of 25 (50 m)

---

## NS 35/ 7,5 UNPERF 2000MM - DIN rail, unperforated

0801681

<https://www.phoenixcontact.com/in/products/0801681>



DIN rail, unperforated, acc. to EN 60715, material: Steel, galvanized, passivated with a thick layer, Standard profile, color: silver, Pack of 25 (50 m)

# RIF-0-RPT-12DC/ 1 - Relay Module

2903362

<https://www.phoenixcontact.com/in/products/2903362>

## NS 35/ 7,5 WH PERF 2000MM - DIN rail perforated

1204119

<https://www.phoenixcontact.com/in/products/1204119>



DIN rail perforated, acc. to EN 60715, material: Steel, Galvanized, white passivated, Standard profile, color: silver, Pack of 25 (50 m)

---

## NS 35/ 7,5 WH UNPERF 2000MM-VPE 10 - DIN rail, unperforated

1204122

<https://www.phoenixcontact.com/in/products/1204122>



DIN rail, unperforated, acc. to EN 60715, material: Steel, Galvanized, white passivated, Standard profile, color: silver, Pack of 10 (20 m)

# RIF-0-RPT-12DC/ 1 - Relay Module

2903362

<https://www.phoenixcontact.com/in/products/2903362>



## NS 35/ 7,5 AL UNPERF 2000MM - DIN rail, unperforated

0801704

<https://www.phoenixcontact.com/in/products/0801704>



DIN rail, unperforated, acc. to EN 60715, material: Aluminum, uncoated, Standard profile, color: silver, Pack of 25 (50 m)

---

## NS 35/ 7,5 ZN PERF 2000MM - DIN rail perforated

1206421

<https://www.phoenixcontact.com/in/products/1206421>



DIN rail perforated, acc. to EN 60715, material: Steel, galvanized, Standard profile, color: silver, Pack of 25 (50 m)

# RIF-0-RPT-12DC/ 1 - Relay Module

2903362

<https://www.phoenixcontact.com/in/products/2903362>



## NS 35/ 7,5 ZN UNPERF 2000MM - DIN rail, unperforated

1206434

<https://www.phoenixcontact.com/in/products/1206434>



DIN rail, unperforated, acc. to EN 60715, material: Steel, galvanized, Standard profile, color: silver, Pack of 25 (50 m)

---

## NS 35/ 7,5 CU UNPERF 2000MM-VPE 10 - DIN rail, unperforated

0801762

<https://www.phoenixcontact.com/in/products/0801762>



DIN rail, unperforated, acc. to EN 60715, material: Copper, uncoated, Standard profile, color: copper-colored, Pack of 10 (20 m)

# RIF-0-RPT-12DC/ 1 - Relay Module

2903362

<https://www.phoenixcontact.com/in/products/2903362>

## NS 35/ 7,5 CAP - End cap

1206560

<https://www.phoenixcontact.com/in/products/1206560>

DIN rail end piece, for DIN rail NS 35/7.5



---

## NS 35/15 PERF 2000MM - DIN rail perforated

1201730

<https://www.phoenixcontact.com/in/products/1201730>



DIN rail perforated, similar to EN 60715, material: Steel, galvanized, passivated with a thick layer, Standard profile, color: silver, Pack of 25 (50 m)

# RIF-0-RPT-12DC/ 1 - Relay Module

2903362

<https://www.phoenixcontact.com/in/products/2903362>

## NS 35/15 UNPERF 2000MM - DIN rail, unperforated

1201714

<https://www.phoenixcontact.com/in/products/1201714>



DIN rail, unperforated, similar to EN 60715, material: Steel, galvanized, passivated with a thick layer, Standard profile, color: silver, Pack of 25 (50 m)

---

## NS 35/15 WH PERF 2000MM - DIN rail perforated

0806602

<https://www.phoenixcontact.com/in/products/0806602>



DIN rail perforated, similar to EN 60715, material: Steel, Galvanized, white passivated, Standard profile, color: white, Pack of 25 (50 m)

# RIF-0-RPT-12DC/ 1 - Relay Module

2903362

<https://www.phoenixcontact.com/in/products/2903362>

## NS 35/15 WH UNPERF 2000MM-VPE 10 - DIN rail, unperforated

1204135

<https://www.phoenixcontact.com/in/products/1204135>



DIN rail, unperforated, similar to EN 60715, material: Steel, Galvanized, white passivated, Standard profile, color: silver, Pack of 10 (20 m)

---

## NS 35/15 AL UNPERF 2000MM - DIN rail, unperforated

1201756

<https://www.phoenixcontact.com/in/products/1201756>



DIN rail, unperforated, similar to EN 60715, material: Aluminum, uncoated, Standard profile, color: silver

# RIF-0-RPT-12DC/ 1 - Relay Module

2903362

<https://www.phoenixcontact.com/in/products/2903362>

## NS 35/15 ZN PERF 2000MM - DIN rail perforated

1206599

<https://www.phoenixcontact.com/in/products/1206599>



DIN rail perforated, similar to EN 60715, material: Steel, galvanized, Standard profile, color: silver, Pack of 25 (50 m)

---

## NS 35/15 ZN UNPERF 2000MM - DIN rail, unperforated

1206586

<https://www.phoenixcontact.com/in/products/1206586>



DIN rail, unperforated, similar to EN 60715, material: Steel, galvanized, Standard profile, color: silver, Pack of 25 (50 m)



# RIF-0-RPT-12DC/ 1 - Relay Module

2903362

<https://www.phoenixcontact.com/in/products/2903362>

## NS 35/15 CU UNPERF 2000MM-VPE 10 - DIN rail, unperforated

1201895

<https://www.phoenixcontact.com/in/products/1201895>



DIN rail, unperforated, similar to EN 60715, material: Copper, uncoated, Standard profile, color: copper-colored, Pack of 10 (20 m)

---

## NS 35/15 CAP - End cap

1206573

<https://www.phoenixcontact.com/in/products/1206573>

DIN rail end piece, for DIN rail NS 35/15



# RIF-0-RPT-12DC/ 1 - Relay Module

2903362

<https://www.phoenixcontact.com/in/products/2903362>

## NS 35/15-2,3 UNPERF 2000MM-VPE 10 - DIN rail, unperforated

1201798

<https://www.phoenixcontact.com/in/products/1201798>



DIN rail, unperforated, acc. to EN 60715, material: Steel, galvanized, passivated with a thick layer, Standard profile 2.3 mm, color: silver, Pack of 10 (20 m)

---

## CLIPFIX 35 - End clamp

3022218

<https://www.phoenixcontact.com/in/products/3022218>



Quick mounting end clamp for NS 35/7,5 DIN rail or NS 35/15 DIN rail, with marking option, width: 9.5 mm, color: gray

# RIF-0-RPT-12DC/ 1 - Relay Module

2903362

<https://www.phoenixcontact.com/in/products/2903362>

## CLIPFIX 35-5 - End clamp

3022276

<https://www.phoenixcontact.com/in/products/3022276>



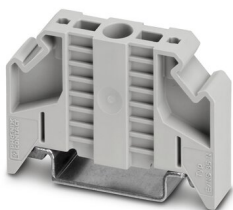
Quick mounting end clamp for NS 35/7,5 DIN rail or NS 35/15 DIN rail, with marking option, with parking option for FBS...5, FBS...6, KSS 5, KSS 6, width: 5.15 mm, color: gray

---

## E/NS 35 N - End clamp

0800886

<https://www.phoenixcontact.com/in/products/0800886>



End clamp, width: 9.5 mm, color: gray

# RIF-0-RPT-12DC/ 1 - Relay Module



2903362

<https://www.phoenixcontact.com/in/products/2903362>

## MPS-MT - Test plugs

0201744

<https://www.phoenixcontact.com/in/products/0201744>



Test plugs, with solder connection up to 1 mm<sup>2</sup> conductor cross section, number of positions: 1, color: gray

---

## MPS-IH WH - Insulating sleeve

0201663

<https://www.phoenixcontact.com/in/products/0201663>

Insulating sleeve, color: white



# RIF-0-RPT-12DC/ 1 - Relay Module

2903362

<https://www.phoenixcontact.com/in/products/2903362>

## MPS-IH RD - Insulating sleeve

0201676

<https://www.phoenixcontact.com/in/products/0201676>

Insulating sleeve, color: red



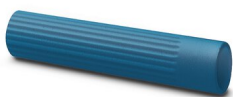
---

## MPS-IH BU - Insulating sleeve

0201689

<https://www.phoenixcontact.com/in/products/0201689>

Insulating sleeve, color: blue



# RIF-0-RPT-12DC/ 1 - Relay Module

2903362

<https://www.phoenixcontact.com/in/products/2903362>

## MPS-IH YE - Insulating sleeve

0201692

<https://www.phoenixcontact.com/in/products/0201692>

Insulating sleeve, color: yellow



## MPS-IH GN - Insulating sleeve

0201702

<https://www.phoenixcontact.com/in/products/0201702>

Insulating sleeve, color: green



# RIF-0-RPT-12DC/ 1 - Relay Module

2903362

<https://www.phoenixcontact.com/in/products/2903362>



## MPS-IH GY - Insulating sleeve

0201728

<https://www.phoenixcontact.com/in/products/0201728>

Insulating sleeve, color: gray



---

## MPS-IH BK - Insulating sleeve

0201731

<https://www.phoenixcontact.com/in/products/0201731>

Insulating sleeve, color: black



# RIF-0-RPT-12DC/ 1 - Relay Module

2903362

<https://www.phoenixcontact.com/in/products/2903362>

## ZB 6:UNBEDRUCKT - Zack marker strip

1051003

<https://www.phoenixcontact.com/in/products/1051003>



Zack marker strip, Strip, white, unlabeled, can be labeled with: PLOTMARK, CMS-P1-PLOTTER, mounting type: snapped, for terminal block width: 6.2 mm, lettering field size: 6.15 x 10.5 mm, Number of individual labels: 10

---

## ZB 6 CUS - Zack marker strip

0824992

<https://www.phoenixcontact.com/in/products/0824992>



Zack marker strip, can be ordered: Strip, white, labeled according to customer specifications, mounting type: snap into tall marker groove, for terminal block width: 6.2 mm, lettering field size: 6.15 x 10.5 mm, Number of individual labels: 10



# RIF-0-RPT-12DC/ 1 - Relay Module

2903362

<https://www.phoenixcontact.com/in/products/2903362>

## ZB 6,LGS:FORTL.ZAHLEN - Zack marker strip

1051016

<https://www.phoenixcontact.com/in/products/1051016>



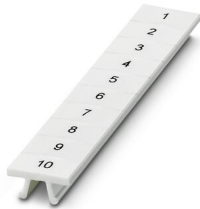
Zack marker strip, Strip, white, labeled, can be labeled with: CMS-P1-PLOTTER, printed horizontally: consecutive numbers 1 ... 10, 11 ... 20, etc. up to 491 ... 500, mounting type: snapped, for terminal block width: 6.2 mm, lettering field size: 6. 15 x 10.5 mm, Number of individual labels: 10

---

## ZB 6,QR:FORTL.ZAHLEN - Zack marker strip

1051029

<https://www.phoenixcontact.com/in/products/1051029>



Zack marker strip, Strip, white, labeled, can be labeled with: CMS-P1-PLOTTER, Printed vertically: consecutive numbers 1 ... 10, 11 ... 20, etc. up to 491 ... 500, mounting type: snapped, for terminal block width: 6.2 mm, lettering field size: 6. 15 x 10.5 mm, Number of individual labels: 10

# RIF-0-RPT-12DC/ 1 - Relay Module

2903362

<https://www.phoenixcontact.com/in/products/2903362>

## ZB 6,LGS:GLEICHE ZAHLEN - Zack marker strip

1051032

<https://www.phoenixcontact.com/in/products/1051032>



Zack marker strip, Strip, white, labeled, can be labeled with: CMS-P1-PLOTTER, printed horizontally: Identical numbers 1 or 2, etc. up to 100, mounting type: snapped, for terminal block width: 6.2 mm, lettering field size: 6.15 x 10.5 mm, Number of individual labels: 10

---

## ZB 6,LGS:L1-N,PE - Marker for terminal blocks

1051414

<https://www.phoenixcontact.com/in/products/1051414>



Marker for terminal blocks, Strip, white, labeled, can be labeled with: CMS-P1-PLOTTER, horizontal: L1, L2, L3, N, PE, L1, L2, L3, N, PE, mounting type: snapped, for terminal block width: 6.2 mm, lettering field size: 6.15 x 10.5 mm, Number of individual labels: 10

# RIF-0-RPT-12DC/ 1 - Relay Module



2903362

<https://www.phoenixcontact.com/in/products/2903362>

## ZB 6,LGS:U-N - Marker for terminal blocks

1051430

<https://www.phoenixcontact.com/in/products/1051430>



Marker for terminal blocks, Strip, white, labeled, can be labeled with: CMS-P1-PLOTTER, printed horizontally: U, V, W, N, GND, U, V, W, N, GND, mounting type: snapped, for terminal block width: 6.2 mm, lettering field size: 6.15 x 10.5 mm, Number of individual labels: 10

---

## UC-TM 6 - Marker for terminal blocks

0818085

<https://www.phoenixcontact.com/in/products/0818085>



Marker for terminal blocks, Sheet, white, unlabeled, can be labeled with: BLUEMARK ID COLOR, BLUEMARK ID, BLUEMARK CLED, PLOTMARK, CMS-P1-PLOTTER, mounting type: snapped, for terminal block width: 6.2 mm, lettering field size: 5.6 x 10.5 mm, Number of individual labels: 80

# RIF-0-RPT-12DC/ 1 - Relay Module



2903362

<https://www.phoenixcontact.com/in/products/2903362>

## UC-TM 6 CUS - Marker for terminal blocks

0824589

<https://www.phoenixcontact.com/in/products/0824589>



Marker for terminal blocks, can be ordered: by sheet, white, labeled according to customer specifications, mounting type: snap into tall marker groove, for terminal block width: 6.2 mm, lettering field size: 5.6 x 10.5 mm, Number of individual labels: 80

---

## UCT-TM 6 - Marker for terminal blocks

0828736

<https://www.phoenixcontact.com/in/products/0828736>



Marker for terminal blocks, Sheet, white, unlabeled, can be labeled with: TOPMARK NEO, TOPMARK LASER, BLUEMARK ID COLOR, BLUEMARK ID, BLUEMARK CLED, THERMOMARK PRIME, THERMOMARK CARD 2.0, THERMOMARK CARD, mounting type: snapped, for terminal block width: 6.2 mm, lettering field size: 5.6 x 10.5 mm, Number of individual labels: 60

# RIF-0-RPT-12DC/ 1 - Relay Module

2903362

<https://www.phoenixcontact.com/in/products/2903362>



## UCT-TM 6 CUS - Marker for terminal blocks

0829602

<https://www.phoenixcontact.com/in/products/0829602>

Marker for terminal blocks, can be ordered: by sheet, white, labeled according to customer specifications, mounting type: snap into tall marker groove, for terminal block width: 6.2 mm, lettering field size: 5.6 x 10.5 mm, Number of individual labels: 60

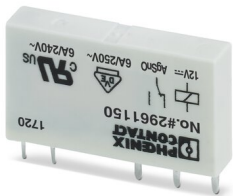


## REL-MR- 12DC/21 - Single relay

2961150

<https://www.phoenixcontact.com/in/products/2961150>

Plug-in miniature power relay, with power contact, 1 changeover contact, input voltage 12 V DC



# RIF-0-RPT-12DC/ 1 - Relay Module

2903362

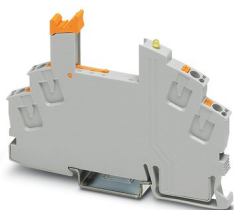
<https://www.phoenixcontact.com/in/products/2903362>



## RIF-0-BPT/1 - Relay base

2901873

<https://www.phoenixcontact.com/in/products/2901873>



RIF-0... relay base, for miniature power relay with 1 N/O contact or solid-state relays of the same design, push-in connection, for mounting on NS 35/7,5

---

Phoenix Contact 2023 © - all rights reserved

<https://www.phoenixcontact.com>

PHOENIX CONTACT (I) Pvt. Ltd.

A-58/2, Okhla Industrial Area, Phase - II, New Delhi-110 020

+91.1275.71420

[info@phoenixcontact.co.in](mailto:info@phoenixcontact.co.in)