

RIF-4-RPT-LV-230AC/3X21 - Relay Module



2903276

<https://www.phoenixcontact.com/in/products/2903276>

Please be informed that the data shown in this PDF document is generated from our Online Catalog. Please find the complete data in the user documentation. Our General Terms of Use for Downloads are valid.



Pre-assembled relay module with Push-in connection, consisting of: relay base, power contact relay, plug-in display/interference suppression module, and retaining bracket. Contact type: 3 changeover contacts. Input voltage: 230 V AC

Product Description

The pluggable electromechanical and solid-state relays in the RIFLINE complete product range and the base are recognized and approved in accordance with UL 508. The relevant approvals can be called up at the individual components in question.

Commercial Data

| | |
|--------------------------------------|---------------------|
| Item number | 2903276 |
| Packing unit | 5 pc |
| Minimum order quantity | 1 pc |
| Sales Key | CK6 |
| Product Key | CK652C |
| Catalog Page | Page 351 (C-5-2019) |
| GTIN | 4046356731638 |
| Weight per Piece (including packing) | 209.2 g |
| Weight per Piece (excluding packing) | 209.2 g |
| Customs tariff number | 85364900 |
| Country of origin | CN |

RIF-4-RPT-LV-230AC/3X21 - Relay Module



2903276

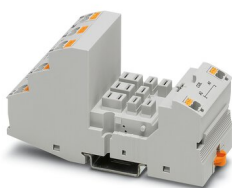
<https://www.phoenixcontact.com/in/products/2903276>

Set consists of

RIF-4-BPT/3X21 - Relay base

2900961

<https://www.phoenixcontact.com/in/products/2900961>



Relay base RIF-4..., for high-power relay with 2 or 3 changeover contacts or 3 N/O contacts, Push-in connection, plug-in option for input/interference suppression modules, for mounting on NS 35/7,5

REL-PR3-230AC/3X21 - Single relay

2903705

<https://www.phoenixcontact.com/in/products/2903705>



Plug-in high-power relay with power contacts, 3 changeover contacts, coil voltage: 230 V AC

RIF-4-RPT-LV-230AC/3X21 - Relay Module

2903276

<https://www.phoenixcontact.com/in/products/2903276>



RIF-LV-120-230 AC/110 DC - Plug-in module

2900944

<https://www.phoenixcontact.com/in/products/2900944>



Plug-in module, for mounting on RIF-1, RIF-2, RIF-3, and RIF-4, with varistor and yellow LED, input voltage: 120 V AC... 230 V AC / 110 V DC ± 20 %

RIF-RH-4 - Retaining bracket

2900956

<https://www.phoenixcontact.com/in/products/2900956>



Relay retaining bracket, with holder for marking material, suitable for RIF-4 relay base, for high-power relay

Technical Data

Product properties

| | |
|-------------------------|-----------------------|
| Product type | Relay Module |
| Product family | RIFLINE complete |
| Application | Universal |
| Operating mode | 100% operating factor |
| Mechanical service life | approx. 10^7 cycles |

Insulation characteristics

| | |
|------------|------------------|
| Insulation | Basic insulation |
|------------|------------------|

Insulation characteristics

| | |
|----------------------|------------------|
| Insulation | Basic insulation |
| Overvoltage category | III |
| Pollution degree | 2 |

Electrical properties

| | |
|---|--|
| Maximum power dissipation for nominal condition | 3.22 W |
| Test voltage (Winding/contact) | 2.5 kV _{rms} (50 Hz, 1 min., winding/contact) |
| Test voltage (Contact/contact) | 2.5 kV _{rms} (50 Hz, 1 min., contact/contact) |
| Rated insulation voltage | 250 V AC |
| Rated surge voltage | 4 kV |

Input data

Coil side

| | |
|---|---------------------------------|
| Nominal input voltage U_N | 230 V AC |
| Input voltage range | 195.5 V AC ... 253 V AC (20 °C) |
| Input voltage range in reference to U_N | see diagram |
| Mains frequency | 50/60 Hz |
| Typical input current at U_N | 14 mA |
| Typical response time | 5 ms ... 25 ms |
| Typical release time range | 5 ms ... 20 ms |
| Coil voltage | 230 V AC |
| Protective circuit | Varistor |
| Operating voltage display | Yellow LED |

Output data

Switching

| | |
|------------------------|-----------------------|
| Contact type | 3 changeover contacts |
| Type of switch contact | Single contact |
| Drive and function | monostable |
| Drive (polarity) | polarized |

RIF-4-RPT-LV-230AC/3X21 - Relay Module



2903276

<https://www.phoenixcontact.com/in/products/2903276>

| | |
|--|--|
| Contact material | AgNi |
| Maximum switching voltage | 440 V AC |
| | 250 V DC |
| Minimum switching voltage | 10 V (24 mA) |
| Limiting continuous current | 8 A (see diagram) |
| Maximum inrush current | 50 A (20 ms, N/O contacts) |
| Min. switching current | 10 mA (24 V) |
| Interrupting rating (ohmic load) max. | 216 W (24 V DC) |
| | 124 W (48 V DC) |
| | 108 W (60 V DC) |
| | 52 W (110 V DC) |
| | 70 W (220 V DC) |
| | 2250 VA (250 V AC) |
| | 4000 VA (440 V AC) |
| 3-phase motor load | 1500 W |
| Motor load according to UL 508 | 1/3 HP, 120 V AC (single-phase AC motor) |
| | 1/2 HP, 240 V AC (single-phase AC motor) |
| | 1/2 HP, 240 V AC (three-phase induction motor) |
| Utilization category CB Scheme (IEC 60947-5-1) | AC15, 1.5 A/240 V (N/O contact) |
| | DC13, 2 A/240 V (N/O contact) |

Connection data

Coil side

| | |
|----------------------------------|---|
| Connection method | Push-in connection |
| Stripping length | 8 mm |
| Conductor cross section rigid | 0.14 mm ² ... 1.5 mm ² |
| Conductor cross section flexible | 0.14 mm ² ... 1.5 mm ² |
| | 0.14 mm ² ... 1.5 mm ² (Ferrule with plastic sleeve) |
| | 0.14 mm ² ... 1 mm ² (Ferrule with plastic sleeve, two conductors on double terminal block) |
| Conductor cross section AWG | 26 ... 16 (solid) |
| | 26 ... 16 (flexible) |

Contact side

| | |
|----------------------------------|---|
| Connection method | Push-in connection |
| Stripping length | 10 mm |
| Conductor cross section rigid | 0.14 mm ² ... 2.5 mm ² |
| Conductor cross section flexible | 0.14 mm ² ... 2.5 mm ² |
| | 0.14 mm ² ... 2.5 mm ² (Ferrule with plastic sleeve) |
| | 0.14 mm ² ... 1 mm ² (Ferrule with plastic sleeve, two conductors on double terminal block) |
| Conductor cross section AWG | 26 ... 14 (solid) |
| | 26 ... 14 (flexible) |

Dimensions

RIF-4-RPT-LV-230AC/3X21 - Relay Module



2903276

<https://www.phoenixcontact.com/in/products/2903276>

| | |
|--------|--------|
| Width | 43 mm |
| Height | 111 mm |
| Depth | 90 mm |

Drill hole

| | |
|----------|--------|
| Diameter | 3.2 mm |
|----------|--------|

Material specifications

| | |
|--|--------------|
| Flammability rating according to UL 94 | V2 (Housing) |
|--|--------------|

Environmental and real-life conditions

Ambient conditions

| | |
|---|-------------------|
| Degree of protection (Relay base) | IP20 (Relay base) |
| Degree of protection (Relay) | RT I (Relay) |
| Ambient temperature (operation) | -40 °C ... 40 °C |
| Ambient temperature (storage/transport) | -40 °C ... 85 °C |

Approvals

Corrosive gas test

| | |
|----------------|----------------------------|
| Identification | ISA-S71.04. G3 Harsh Group |
| | EN 60068-2-60 |

Standards and regulations

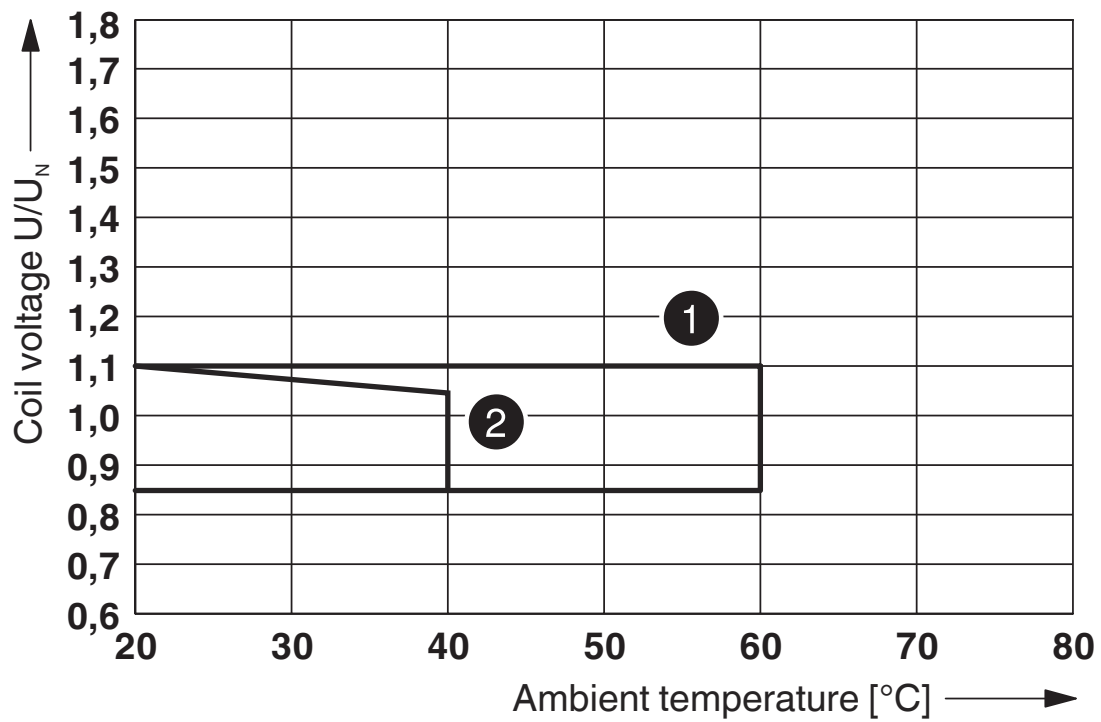
| | |
|-----------------------|---------------|
| Standards/regulations | IEC 60947-5-1 |
|-----------------------|---------------|

Mounting

| | |
|-----------------------|---------------------------|
| Mounting type | DIN rail mounting |
| Assembly instructions | in rows with zero spacing |
| Mounting position | any |

Drawings

Diagram



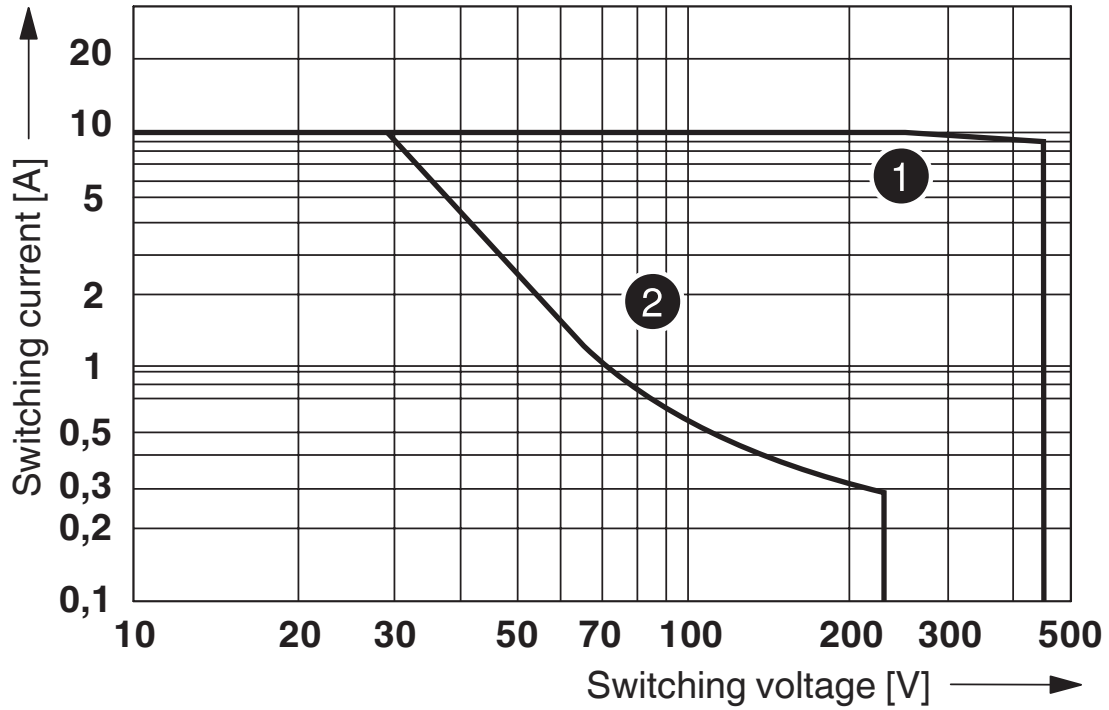
- ① DC coil (observe contact derating)
- ② AC coil (observe contact derating)

Operating voltage range

2903276

<https://www.phoenixcontact.com/in/products/2903276>

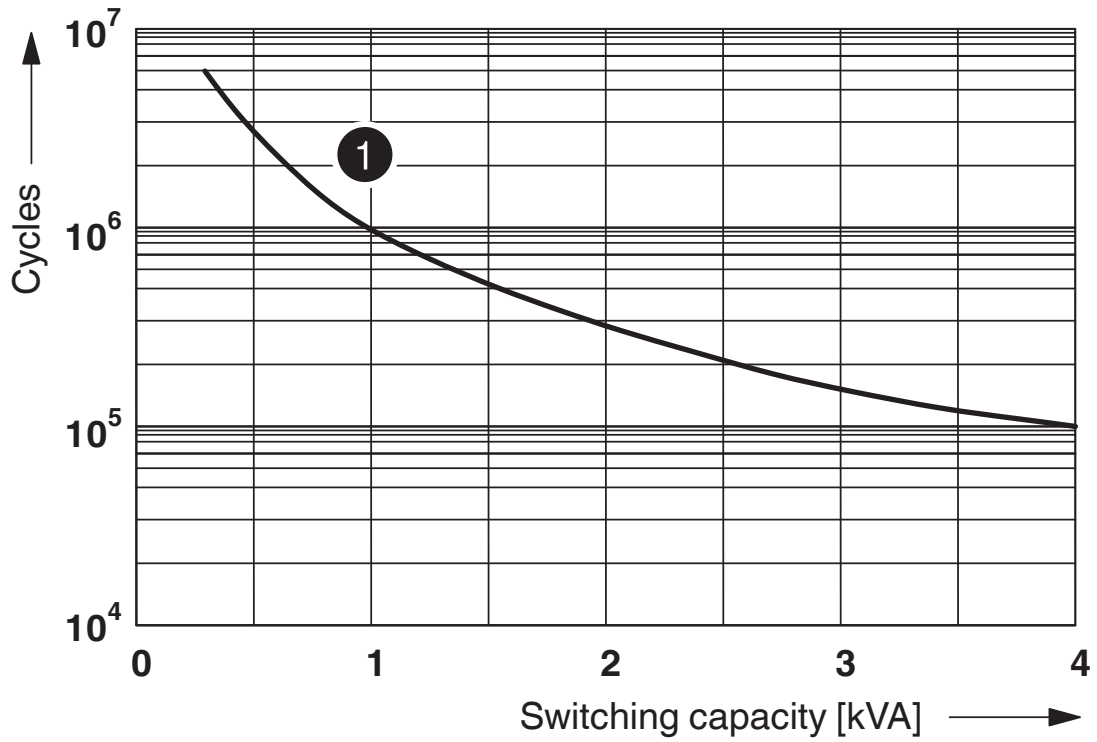
Diagram



- ① AC, ohmic load
- ② DC, ohmic load

Interrupting rating

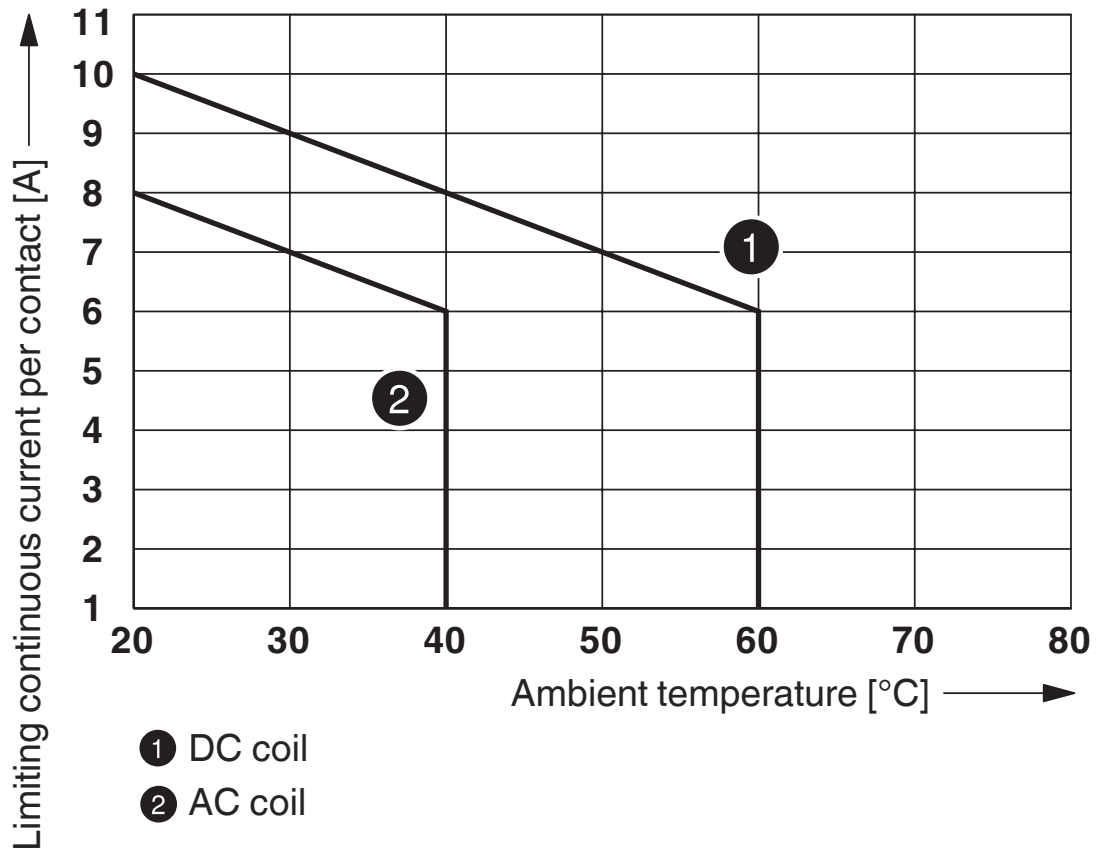
Diagram



① 250 V AC, Ohmic load

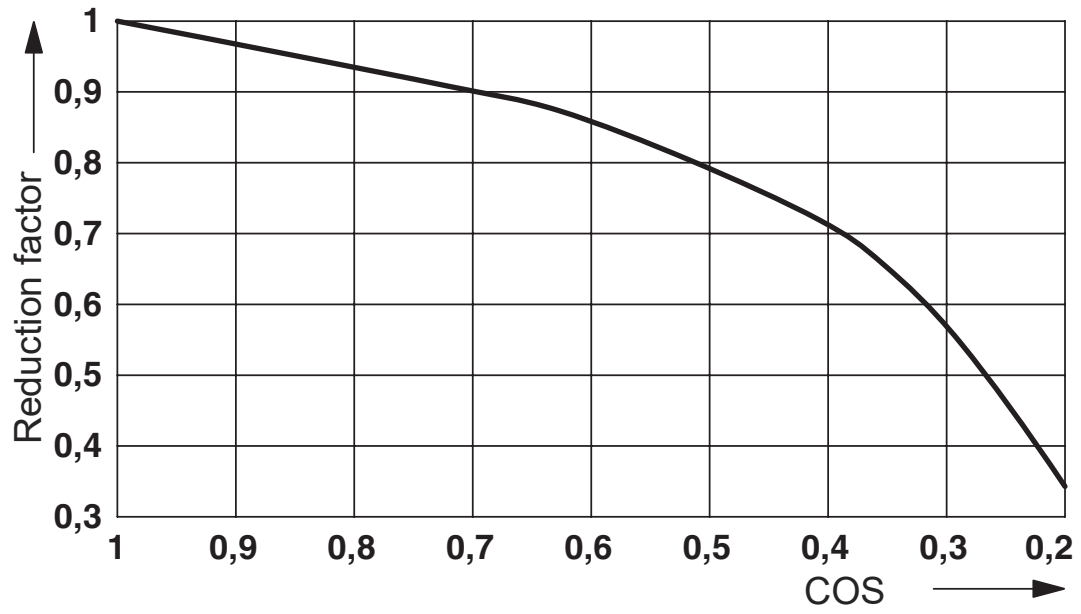
Electrical service life

Diagram



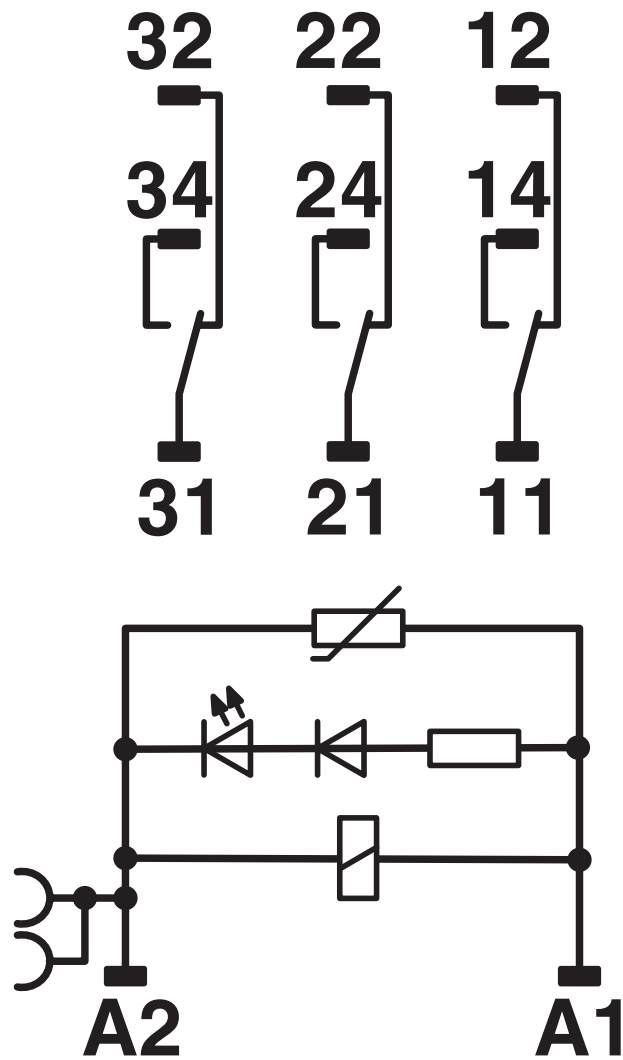
Contact derating

Diagram



Service life reduction factor

Circuit diagram



RIF-4-RPT-LV-230AC/3X21 - Relay Module




2903276


<https://www.phoenixcontact.com/in/products/2903276>

Approvals

 **CSA**
Approval ID: 76787

 **EAC**
Approval ID: TR_TS_D_00573_c

 **DNV GL**
Approval ID: TAA000018V

 **EAC**
Approval ID: RU*C-DE.*08.B.00010

 **DNV GL**
Approval ID: TAA000018V

RIF-4-RPT-LV-230AC/3X21 - Relay Module



2903276

<https://www.phoenixcontact.com/in/products/2903276>

Classifications

ECLASS

| | |
|-------------|----------|
| ECLASS-11.0 | 27371601 |
| ECLASS-12.0 | 27371601 |
| ECLASS-13.0 | 27371601 |

ETIM

| | |
|----------|----------|
| ETIM 8.0 | EC001437 |
|----------|----------|

UNSPSC

| | |
|-------------|----------|
| UNSPSC 21.0 | 39122300 |
|-------------|----------|

RIF-4-RPT-LV-230AC/3X21 - Relay Module



2903276

<https://www.phoenixcontact.com/in/products/2903276>

Environmental Product Compliance

| | |
|------------|--|
| REACH SVHC | Lead 7439-92-1 |
| China RoHS | Environmentally Friendly Use Period = 50 years |
| | For information on hazardous substances, refer to the manufacturer's declaration available under "Downloads" |

RIF-4-RPT-LV-230AC/3X21 - Relay Module



2903276

<https://www.phoenixcontact.com/in/products/2903276>

Accessories

FBS 2-6 - Plug-in bridge

3030336

<https://www.phoenixcontact.com/in/products/3030336>



Plug-in bridge, pitch: 6.2 mm, number of positions: 2, color: red

FBS 2-6 BU - Plug-in bridge

3036932

<https://www.phoenixcontact.com/in/products/3036932>



Plug-in bridge, pitch: 6.2 mm, number of positions: 2, color: blue

RIF-4-RPT-LV-230AC/3X21 - Relay Module



2903276

<https://www.phoenixcontact.com/in/products/2903276>

FBS 2-6 GY - Plug-in bridge

3032237

<https://www.phoenixcontact.com/in/products/3032237>



Plug-in bridge, pitch: 6.2 mm, number of positions: 2, color: gray

STP 5-2 - Marker carriers

0800967

<https://www.phoenixcontact.com/in/products/0800967>



Marker carriers, snaps into STTB 2,5, STTB 4, PTTB 2,5, and PTTB 4 double-level spring-cage terminal blocks, can be marked with UC-TM 5, UC-TMF 5, UCT-TM 5, UCT-TMF 5, ZB 5, or ZBF 5, gray, unlabeled, mounting type: plug in, lettering field size: 5 x 10.5 mm

RIF-4-RPT-LV-230AC/3X21 - Relay Module



2903276

<https://www.phoenixcontact.com/in/products/2903276>

UC-TM 16 - Marker for terminal blocks

0819217

<https://www.phoenixcontact.com/in/products/0819217>



Marker for terminal blocks, Sheet, white, unlabeled, can be labeled with: BLUEMARK ID COLOR, BLUEMARK ID, BLUEMARK CLED, PLOTMARK, CMS-P1-PLOTTER, mounting type: snapped, for terminal block width: 16 mm, lettering field size: 15.45 x 10.5 mm, Number of individual labels: 32

UC-TMF 16 - Marker for terminal blocks

0819262

<https://www.phoenixcontact.com/in/products/0819262>



Marker for terminal blocks, Sheet, white, unlabeled, can be labeled with: BLUEMARK ID COLOR, BLUEMARK ID, BLUEMARK CLED, PLOTMARK, CMS-P1-PLOTTER, mounting type: snapped, for terminal block width: 16 mm, lettering field size: 15.45 x 5.1 mm, Number of individual labels: 32

RIF-4-RPT-LV-230AC/3X21 - Relay Module



2903276

<https://www.phoenixcontact.com/in/products/2903276>

NS 35/ 7,5 PERF 2000MM - DIN rail perforated

0801733

<https://www.phoenixcontact.com/in/products/0801733>



DIN rail perforated, acc. to EN 60715, material: Steel, galvanized, passivated with a thick layer, Standard profile, color: silver, Pack of 25 (50 m)

NS 35/ 7,5 UNPERF 2000MM - DIN rail, unperforated

0801681

<https://www.phoenixcontact.com/in/products/0801681>



DIN rail, unperforated, acc. to EN 60715, material: Steel, galvanized, passivated with a thick layer, Standard profile, color: silver, Pack of 25 (50 m)

RIF-4-RPT-LV-230AC/3X21 - Relay Module



2903276

<https://www.phoenixcontact.com/in/products/2903276>

NS 35/ 7,5 WH PERF 2000MM - DIN rail perforated

1204119

<https://www.phoenixcontact.com/in/products/1204119>



DIN rail perforated, acc. to EN 60715, material: Steel, Galvanized, white passivated, Standard profile, color: silver, Pack of 25 (50 m)

NS 35/ 7,5 WH UNPERF 2000MM-VPE 10 - DIN rail, unperforated

1204122

<https://www.phoenixcontact.com/in/products/1204122>



DIN rail, unperforated, acc. to EN 60715, material: Steel, Galvanized, white passivated, Standard profile, color: silver, Pack of 10 (20 m)

RIF-4-RPT-LV-230AC/3X21 - Relay Module



2903276

<https://www.phoenixcontact.com/in/products/2903276>

NS 35/ 7,5 AL UNPERF 2000MM - DIN rail, unperforated

0801704

<https://www.phoenixcontact.com/in/products/0801704>



DIN rail, unperforated, acc. to EN 60715, material: Aluminum, uncoated, Standard profile, color: silver, Pack of 25 (50 m)

NS 35/ 7,5 ZN PERF 2000MM - DIN rail perforated

1206421

<https://www.phoenixcontact.com/in/products/1206421>



DIN rail perforated, acc. to EN 60715, material: Steel, galvanized, Standard profile, color: silver, Pack of 25 (50 m)

RIF-4-RPT-LV-230AC/3X21 - Relay Module



2903276

<https://www.phoenixcontact.com/in/products/2903276>

NS 35/ 7,5 ZN UNPERF 2000MM - DIN rail, unperforated

1206434

<https://www.phoenixcontact.com/in/products/1206434>



DIN rail, unperforated, acc. to EN 60715, material: Steel, galvanized, Standard profile, color: silver, Pack of 25 (50 m)

NS 35/ 7,5 CU UNPERF 2000MM-VPE 10 - DIN rail, unperforated

0801762

<https://www.phoenixcontact.com/in/products/0801762>



DIN rail, unperforated, acc. to EN 60715, material: Copper, uncoated, Standard profile, color: copper-colored, Pack of 10 (20 m)

RIF-4-RPT-LV-230AC/3X21 - Relay Module



2903276

<https://www.phoenixcontact.com/in/products/2903276>

NS 35/ 7,5 CAP - End cap

1206560

<https://www.phoenixcontact.com/in/products/1206560>

DIN rail end piece, for DIN rail NS 35/7.5



NS 35/15 PERF 2000MM - DIN rail perforated

1201730

<https://www.phoenixcontact.com/in/products/1201730>



DIN rail perforated, similar to EN 60715, material: Steel, galvanized, passivated with a thick layer, Standard profile, color: silver, Pack of 25 (50 m)

RIF-4-RPT-LV-230AC/3X21 - Relay Module



2903276

<https://www.phoenixcontact.com/in/products/2903276>

NS 35/15 UNPERF 2000MM - DIN rail, unperforated

1201714

<https://www.phoenixcontact.com/in/products/1201714>



DIN rail, unperforated, similar to EN 60715, material: Steel, galvanized, passivated with a thick layer, Standard profile, color: silver, Pack of 25 (50 m)

NS 35/15 WH PERF 2000MM - DIN rail perforated

0806602

<https://www.phoenixcontact.com/in/products/0806602>



DIN rail perforated, similar to EN 60715, material: Steel, Galvanized, white passivated, Standard profile, color: white, Pack of 25 (50 m)

RIF-4-RPT-LV-230AC/3X21 - Relay Module



2903276

<https://www.phoenixcontact.com/in/products/2903276>

NS 35/15 WH UNPERF 2000MM-VPE 10 - DIN rail, unperforated

1204135

<https://www.phoenixcontact.com/in/products/1204135>



DIN rail, unperforated, similar to EN 60715, material: Steel, Galvanized, white passivated, Standard profile, color: silver, Pack of 10 (20 m)

NS 35/15 AL UNPERF 2000MM - DIN rail, unperforated

1201756

<https://www.phoenixcontact.com/in/products/1201756>



DIN rail, unperforated, similar to EN 60715, material: Aluminum, uncoated, Standard profile, color: silver

RIF-4-RPT-LV-230AC/3X21 - Relay Module

2903276

<https://www.phoenixcontact.com/in/products/2903276>

NS 35/15 ZN PERF 2000MM - DIN rail perforated

1206599

<https://www.phoenixcontact.com/in/products/1206599>



DIN rail perforated, similar to EN 60715, material: Steel, galvanized, Standard profile, color: silver, Pack of 25 (50 m)

NS 35/15 ZN UNPERF 2000MM - DIN rail, unperforated

1206586

<https://www.phoenixcontact.com/in/products/1206586>



DIN rail, unperforated, similar to EN 60715, material: Steel, galvanized, Standard profile, color: silver, Pack of 25 (50 m)

RIF-4-RPT-LV-230AC/3X21 - Relay Module



2903276

<https://www.phoenixcontact.com/in/products/2903276>

NS 35/15 CU UNPERF 2000MM-VPE 10 - DIN rail, unperforated

1201895

<https://www.phoenixcontact.com/in/products/1201895>



DIN rail, unperforated, similar to EN 60715, material: Copper, uncoated, Standard profile, color: copper-colored, Pack of 10 (20 m)

NS 35/15 CAP - End cap

1206573

<https://www.phoenixcontact.com/in/products/1206573>

DIN rail end piece, for DIN rail NS 35/15



RIF-4-RPT-LV-230AC/3X21 - Relay Module



2903276

<https://www.phoenixcontact.com/in/products/2903276>

NS 35/15-2,3 UNPERF 2000MM-VPE 10 - DIN rail, unperforated

1201798

<https://www.phoenixcontact.com/in/products/1201798>



DIN rail, unperforated, acc. to EN 60715, material: Steel, galvanized, passivated with a thick layer, Standard profile 2.3 mm, color: silver, Pack of 10 (20 m)

CLIPFIX 35 - End clamp

3022218

<https://www.phoenixcontact.com/in/products/3022218>



Quick mounting end clamp for NS 35/7,5 DIN rail or NS 35/15 DIN rail, with marking option, width: 9.5 mm, color: gray

RIF-4-RPT-LV-230AC/3X21 - Relay Module



2903276

<https://www.phoenixcontact.com/in/products/2903276>

CLIPFIX 35-5 - End clamp

3022276

<https://www.phoenixcontact.com/in/products/3022276>

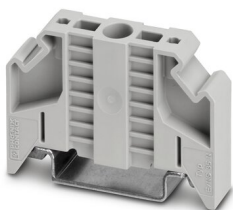


Quick mounting end clamp for NS 35/7,5 DIN rail or NS 35/15 DIN rail, with marking option, with parking option for FBS...5, FBS...6, KSS 5, KSS 6, width: 5.15 mm, color: gray

E/NS 35 N - End clamp

0800886

<https://www.phoenixcontact.com/in/products/0800886>



End clamp, width: 9.5 mm, color: gray

RIF-4-RPT-LV-230AC/3X21 - Relay Module



2903276

<https://www.phoenixcontact.com/in/products/2903276>

MPS-MT - Test plugs

0201744

<https://www.phoenixcontact.com/in/products/0201744>



Test plugs, with solder connection up to 1 mm² conductor cross section, number of positions: 1, color: gray

MPS-IH WH - Insulating sleeve

0201663

<https://www.phoenixcontact.com/in/products/0201663>

Insulating sleeve, color: white



RIF-4-RPT-LV-230AC/3X21 - Relay Module



2903276

<https://www.phoenixcontact.com/in/products/2903276>

MPS-IH RD - Insulating sleeve

0201676

<https://www.phoenixcontact.com/in/products/0201676>

Insulating sleeve, color: red

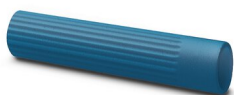


MPS-IH BU - Insulating sleeve

0201689

<https://www.phoenixcontact.com/in/products/0201689>

Insulating sleeve, color: blue



RIF-4-RPT-LV-230AC/3X21 - Relay Module



2903276

<https://www.phoenixcontact.com/in/products/2903276>

MPS-IH YE - Insulating sleeve

0201692

<https://www.phoenixcontact.com/in/products/0201692>

Insulating sleeve, color: yellow



MPS-IH GN - Insulating sleeve

0201702

<https://www.phoenixcontact.com/in/products/0201702>

Insulating sleeve, color: green



RIF-4-RPT-LV-230AC/3X21 - Relay Module



2903276

<https://www.phoenixcontact.com/in/products/2903276>

MPS-IH GY - Insulating sleeve

0201728

<https://www.phoenixcontact.com/in/products/0201728>

Insulating sleeve, color: gray



MPS-IH BK - Insulating sleeve

0201731

<https://www.phoenixcontact.com/in/products/0201731>

Insulating sleeve, color: black



RIF-4-RPT-LV-230AC/3X21 - Relay Module



2903276

<https://www.phoenixcontact.com/in/products/2903276>

ZB 5 :UNBEDRUCKT - Zack marker strip

1050004

<https://www.phoenixcontact.com/in/products/1050004>



Zack marker strip, Strip, white, unlabeled, can be labeled with: PLOTMARK, CMS-P1-PLOTTER, mounting type: snapped, for terminal block width: 5.2 mm, lettering field size: 5.1 x 10.5 mm, Number of individual labels: 10

ZB 5 CUS - Zack marker strip

0824962

<https://www.phoenixcontact.com/in/products/0824962>



Zack marker strip, can be ordered: Strip, white, labeled according to customer specifications, mounting type: snap into tall marker groove, for terminal block width: 5.2 mm, lettering field size: 5.15 x 10.5 mm, Number of individual labels: 10

RIF-4-RPT-LV-230AC/3X21 - Relay Module



2903276

<https://www.phoenixcontact.com/in/products/2903276>

ZB 5,LGS:FORTL.ZAHLEN - Zack marker strip

1050017

<https://www.phoenixcontact.com/in/products/1050017>

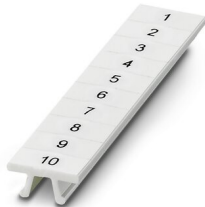


Zack marker strip, Strip, white, labeled, printed horizontally: consecutive numbers 1 ... 10, 11 ... 20, etc. up to 491 ... 500, mounting type: snapped, for terminal block width: 5.2 mm, lettering field size: 5.15 x 10.5 mm, Number of individual labels: 10

ZB 5,QR:FORTL.ZAHLEN - Zack marker strip

1050020

<https://www.phoenixcontact.com/in/products/1050020>



Zack marker strip, white, Printed vertically: consecutive numbers 1 ... 10, 11 ... 20, etc. up to 491 ... 500, mounting type: snapped, for terminal block width: 5.2 mm, lettering field size: 5.15 x 10.5 mm

RIF-4-RPT-LV-230AC/3X21 - Relay Module



2903276

<https://www.phoenixcontact.com/in/products/2903276>

ZB 5,LGS:GLEICHE ZAHLEN - Zack marker strip

1050033

<https://www.phoenixcontact.com/in/products/1050033>



Zack marker strip, Strip, white, labeled, can be labeled with: CMS-P1-PLOTTER, printed horizontally: Identical numbers 1 or 2, etc. up to 100, mounting type: snapped, for terminal block width: 5.2 mm, lettering field size: 5.15 x 10.5 mm, Number of individual labels: 10

ZB 5,LGS:L1-N,PE - Zack marker strip

1050415

<https://www.phoenixcontact.com/in/products/1050415>



Zack marker strip, Strip, white, labeled, horizontal: L1, L2, L3, N, PE, L1, L2, L3, N, PE, mounting type: snapped, for terminal block width: 5.2 mm, lettering field size: 5.15 x 10.5 mm, Number of individual labels: 10

RIF-4-RPT-LV-230AC/3X21 - Relay Module



2903276

<https://www.phoenixcontact.com/in/products/2903276>

UC-TM 5 - Marker for terminal blocks

0818108

<https://www.phoenixcontact.com/in/products/0818108>



Marker for terminal blocks, Sheet, white, unlabeled, can be labeled with: BLUEMARK ID COLOR, BLUEMARK ID, BLUEMARK CLED, PLOTMARK, CMS-P1-PLOTTER, mounting type: snapped, for terminal block width: 5.2 mm, lettering field size: 4.6 x 10.5 mm, Number of individual labels: 96

UC-TM 5 CUS - Marker for terminal blocks

0824581

<https://www.phoenixcontact.com/in/products/0824581>



Marker for terminal blocks, can be ordered: by sheet, white, labeled according to customer specifications, mounting type: snap into tall marker groove, for terminal block width: 5.2 mm, lettering field size: 10.5 x 4.6 mm, Number of individual labels: 96

RIF-4-RPT-LV-230AC/3X21 - Relay Module



2903276

<https://www.phoenixcontact.com/in/products/2903276>

UCT-TM 5 - Marker for terminal blocks

0828734

<https://www.phoenixcontact.com/in/products/0828734>



Marker for terminal blocks, Sheet, white, unlabeled, can be labeled with: TOPMARK NEO, TOPMARK LASER, BLUEMARK ID COLOR, BLUEMARK ID, BLUEMARK CLED, THERMOMARK PRIME, THERMOMARK CARD 2.0, THERMOMARK CARD, mounting type: snapped, for terminal block width: 5.2 mm, lettering field size: 4.6 x 10.5 mm, Number of individual labels: 72

UCT-TM 5 CUS - Marker for terminal blocks

0829595

<https://www.phoenixcontact.com/in/products/0829595>



Marker for terminal blocks, can be ordered: by sheet, white, labeled according to customer specifications, mounting type: snap into tall marker groove, for terminal block width: 5.2 mm, lettering field size: 4.6 x 10.5 mm, Number of individual labels: 72

RIF-4-RPT-LV-230AC/3X21 - Relay Module



2903276

<https://www.phoenixcontact.com/in/products/2903276>

GBS 5-25X12 - Group marker label for terminal marking

0810588

<https://www.phoenixcontact.com/in/products/0810588>



Group marker label, snaps onto terminal center for screw, spring-cage and quick connection terminal blocks, labeled with a 25 x 12 mm label or manually with the B-STIFT, in the foot part with ZB 5

GBS 5-25X5 - Group marker label for terminal marking

0829126

<https://www.phoenixcontact.com/in/products/0829126>



Group marking label, can be snapped into terminal center for screw, spring-cage, push-in, and fast connection terminal blocks, can be labeled with a 24 x 4 mm label or manually using B-STIFT, in the foot part with ZB 5

RIF-4-RPT-LV-230AC/3X21 - Relay Module



2903276

<https://www.phoenixcontact.com/in/products/2903276>

STP 5-2-ZB - Marker carriers

3037643

<https://www.phoenixcontact.com/in/products/3037643>

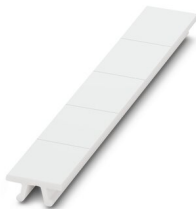


Marker carriers, snaps into ST 2,5 spring-cage terminal blocks, can be marked with UC-TM 5, UC-TMF 5, UCT-TM 5, UCT-TMF 5, ZB 5, or ZBF 5, gray, unlabeled, mounting type: plug in

ZB 15:UNBEDRUCKT - Zack marker strip

0811972

<https://www.phoenixcontact.com/in/products/0811972>



Zack marker strip, Strip, white, unlabeled, can be labeled with: PLOTMARK, CMS-P1-PLOTTER, mounting type: snapped, for terminal block width: 15.2 mm, lettering field size: 10.5 x 15.1 mm, Number of individual labels: 5

RIF-4-RPT-LV-230AC/3X21 - Relay Module



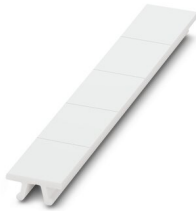
2903276

<https://www.phoenixcontact.com/in/products/2903276>

ZB 15 CUS - Zack marker strip

0824945

<https://www.phoenixcontact.com/in/products/0824945>

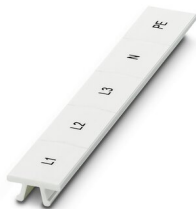


Zack marker strip, can be ordered: Strip, white, labeled according to customer specifications, mounting type: snap into tall marker groove, for terminal block width: 15.2 mm, lettering field size: 10.5 x 15.1 mm, Number of individual labels: 5

ZB 15,LGS:L1-N,PE - Zack marker strip

0811998

<https://www.phoenixcontact.com/in/products/0811998>



Zack marker strip, Strip, white, labeled, printed horizontally: L1, L2, L3, N, PE, mounting type: snapped, for terminal block width: 15.2 mm, lettering field size: 10.5 x 15.1 mm, Number of individual labels: 5

RIF-4-RPT-LV-230AC/3X21 - Relay Module



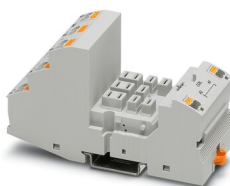
2903276

<https://www.phoenixcontact.com/in/products/2903276>

RIF-4-BPT/3X21 - Relay base

2900961

<https://www.phoenixcontact.com/in/products/2900961>



Relay base RIF-4..., for high-power relay with 2 or 3 changeover contacts or 3 N/O contacts, Push-in connection, plug-in option for input/interference suppression modules, for mounting on NS 35/7,5

REL-PR3-230AC/3X21 - Single relay

2903705

<https://www.phoenixcontact.com/in/products/2903705>



Plug-in high-power relay with power contacts, 3 changeover contacts, coil voltage: 230 V AC

RIF-4-RPT-LV-230AC/3X21 - Relay Module



2903276

<https://www.phoenixcontact.com/in/products/2903276>

RIF-LV-120-230 AC/110 DC - Plug-in module

2900944

<https://www.phoenixcontact.com/in/products/2900944>



Plug-in module, for mounting on RIF-1, RIF-2, RIF-3, and RIF-4, with varistor and yellow LED, input voltage: 120 V AC... 230 V AC / 110 V DC $\pm 20\%$

RIF-RH-4 - Retaining bracket

2900956

<https://www.phoenixcontact.com/in/products/2900956>



Relay retaining bracket, with holder for marking material, suitable for RIF-4 relay base, for high-power relay

Phoenix Contact 2023 © - all rights reserved
<https://www.phoenixcontact.com>

PHOENIX CONTACT (I) Pvt. Ltd.
A-58/2, Okhla Industrial Area, Phase - II, New Delhi-110 020

+91.1275.71420
info@phoenixcontact.co.in