

# MACX MCR-EX-SL-RPSSI-I-UP - Power/input isolating amplifier



2865793

<https://www.phoenixcontact.com/in/products/2865793>

Please be informed that the data shown in this PDF document is generated from our Online Catalog. Please find the complete data in the user documentation. Our General Terms of Use for Downloads are valid.



Ex i repeater power supply and input signal conditioner, HART-transparent. Transmits supplied or active 0/4 ... 20 mA signals from the Ex area to a load (active or passive) in the safe area. SIL 2 (1oo1) / SIL 3 (1oo2), wide-range supply.

## Your advantages

- 250  $\Omega$  resistor that can be activated via DIP switches to increase HART impedance for low-resistance systems
- Installation in zone 2, protection type "n" (EN 60079-15) permitted
- Up to SIL 2 in accordance with EN 61508
- Wide-range power supply of 19.2 ... 253 V AC/DC
- 3-way electrical isolation
- Plug-in screw or spring-cage connection technology (Push-in technology), with integrated sockets for HART communicators
- 0/4 ... 20 mA input, [Ex ia] IIC (powered or not powered)
- Bidirectional transmission of digital HART communication signals
- 0/4 ... 20 mA output (active or passive), 0/1 ... 5 V, can be selected via DIP switches

## Commercial Data

|                                      |                     |
|--------------------------------------|---------------------|
| Item number                          | 2865793             |
| Packing unit                         | 1 pc                |
| Minimum order quantity               | 1 pc                |
| Sales Key                            | CK3                 |
| Product Key                          | CK3111              |
| Catalog Page                         | Page 145 (C-5-2019) |
| GTIN                                 | 4046356324694       |
| Weight per Piece (including packing) | 194.2 g             |
| Weight per Piece (excluding packing) | 194.2 g             |
| Customs tariff number                | 85437090            |
| Country of origin                    | DE                  |

# MACX MCR-EX-SL-RPSSI-I-UP - Power/input isolating amplifier



2865793

<https://www.phoenixcontact.com/in/products/2865793>

## Technical Data

### Notes

#### Utilization restriction

|          |   |
|----------|---|
| EMC note | EMC: class A product, see manufacturer's declaration in the download area |
|----------|---|

### Product properties

|                 |   |
|-----------------|---|
| Product type    | Repeater power supplies                             |
| Product family  | MACX Analog   |
| Application     | Analog IN   |
| No. of channels | 1   |
| Type            | Ex i signal conditioners with SIL functional safety |
| Configuration   | DIP switches  |

#### Insulation characteristics: GB Standard

|                      |    |
|----------------------|----|
| Overvoltage category | II |
| Pollution degree     | 2  |

### Electrical properties

|   |   |
|---|---|
| No. of channels                               | 1                                       |
| Electrical isolation                          | 3-way isolation                         |
| Electrical isolation between input and output | yes                                     |
| Step response (10-90%)                        | < 600 $\mu$ s (for 4 mA ... 20 mA step) |
| Maximum temperature coefficient               | < 0.01 %/K                              |
| Maximum transmission error                    | < 0.1 % (of final value)                |
| Transmission error, typical                   | < 0.05 % (of final value)               |

#### Electrical isolation Input/output/power supply

|                          |  |
|--------------------------|--|
| Rated insulation voltage | 300 V <sub>rms</sub>                             |
| Test voltage             | 2.5 kV AC (50 Hz, 60 s)                          |
| Insulation               | Safe isolation in accordance with IEC/EN 61010-1 |

#### Electrical isolation Input/output

|                      |   |
|----------------------|---|
| Electrical isolation | 375 V (Peak value in accordance with IEC/EN 60079-11) |
|----------------------|---|

#### Electrical isolation Input/power supply

|                      |   |
|----------------------|---|
| Electrical isolation | 375 V (Peak value in accordance with IEC/EN 60079-11) |
|----------------------|---|

### Supply

|                              |   |
|------------------------------|---|
| Designation                  | Repeater power supply operation   |
| Nominal supply voltage range | 24 V AC/DC ... 230 V AC/DC (50/60 Hz)   |
| Supply voltage range         | 19.2 V AC/DC ... 253 V AC/DC (24 V AC/DC ... 230 V AC/DC (-20 % ... +10 %, 50/60 Hz)) |

# MACX MCR-EX-SL-RPSSI-I-UP - Power/input isolating amplifier



2865793

<https://www.phoenixcontact.com/in/products/2865793>

|                          |                           |
|--------------------------|---------------------------|
| Max. current consumption | < 80 mA (24 V DC / 20 mA) |
| Power dissipation        | < 1.6 W (24 V DC / 20 mA) |
| Power consumption        | < 2.2 W                   |

## Supply

|                              |   |
|------------------------------|---|
| Designation                  | Signal conditioner operation  |
| Nominal supply voltage range | 24 V AC/DC ... 230 V AC/DC (50/60 Hz)   |
| Supply voltage range         | 19.2 V AC/DC ... 253 V AC/DC (24 V AC/DC ... 230 V AC/DC (-20 % ... +10 %, 50/60 Hz)) |
| Max. current consumption     | < 45 mA (24 V DC / 20 mA)   |
| Power dissipation            | < 1.1 W (24 V DC / 20 mA)   |

## Input data

### Signal: Repeater power supply operation

|                            |  |
|----------------------------|--|
| Description of the input   | Active current input, intrinsically safe |
| Number of inputs           | 1  |
| Current input signal       | 4 mA ... 20 mA                           |
| Transmitter supply voltage | > 16 V (20 mA)<br>> 15.3 V (22.5 mA)     |

### Signal: Signal conditioner operation

|                          |  |
|--------------------------|--|
| Description of the input | Passive current input, intrinsically safe        |
| Current input signal     | 0 mA ... 20 mA<br>4 mA ... 20 mA                 |
| Voltage drop             | < 3.5 V (in input isolating amplifier operation) |

## Output data

### Signal: Repeater power supply operation

|  |   |
|--|---|
| Output description                       | Current output (active and passive)   |
| Number of outputs                        | 1   |
| Voltage output signal                    | 1 V ... 5 V (internal resistance, 250 Ω, 0.1%)<br>Configurable via DIP switches |
| Current output signal                    | 4 mA ... 20 mA (active)<br>4 mA ... 20 mA (14 ... 26 V ext. source voltage)     |
| Load/output load current output          | < 600 Ω (20 mA)<br>< 525 Ω (22.5 mA)  |
| Output ripple                            | < 20 mV <sub>rms</sub>  |
| Output behavior in the event of an error | 0 mA (Cable break in the input)<br>≥ 22.5 mA (Cable short-circuit in the input) |

### Signal: Signal conditioner operation

|                       |  |
|-----------------------|--|
| Output description    | Current output (active and passive)            |
| Voltage output signal | 0 V ... 5 V (internal resistance, 250 Ω, 0.1%) |

# MACX MCR-EX-SL-RPSSI-I-UP - Power/input isolating amplifier



2865793

<https://www.phoenixcontact.com/in/products/2865793>

|  |  |
|--|--|
|  | 1 V ... 5 V (internal resistance, 250 $\Omega$ , 0.1%) |
| Current output signal                    | 0 mA ... 20 mA (active)                                |
|  | 4 mA ... 20 mA (active)                                |
|  | 0 mA ... 20 mA (14 ... 26 V ext. source voltage)       |
|  | 4 mA ... 20 mA (14 ... 26 V ext. source voltage)       |
| Load/output load current output          | < 600 $\Omega$ (20 mA)                                 |
|  | < 525 $\Omega$ (22.5 mA)                               |
| Output ripple                            | < 20 mV <sub>rms</sub>                                 |
| Output behavior in the event of an error | 0 mA (Cable break in the input)                        |
|  | 0 mA (Cable short-circuit in the input)                |

## Connection data

|                                  |   |
|----------------------------------|---|
| Connection method                | Screw connection                            |
| Stripping length                 | 7 mm  |
| Screw thread                     | M3  |
| Conductor cross section rigid    | 0.2 mm <sup>2</sup> ... 2.5 mm <sup>2</sup> |
| Conductor cross section flexible | 0.2 mm <sup>2</sup> ... 2.5 mm <sup>2</sup> |
| Conductor cross section AWG      | 24 ... 14                                   |
| Tightening torque                | 0.5 Nm ... 0.6 Nm                           |

## Ex data

|                       |        |
|-----------------------|--------|
| Ex installation (EPL) | Gc     |
|                       | Div. 2 |
| Ex i circuits (EPL)   | Ga     |
|                       | Da     |
|                       | Ma     |
|                       | Div. 1 |

### Safety data: Repeater power supply operation

|   |                                 |
|---|---------------------------------|
| Note  | Repeater power supply operation |
| Max. output voltage $U_o$   | 25.2 V                          |
| Max. output current $I_o$   | 93 mA                           |
| Max. output power $P_o$   | 587 mW                          |
| Safety-related maximum voltage $U_m$  | 253 V AC/DC (Supply terminals)  |
|   | 253 V AC (Output terminals)     |
|   | 125 V DC (Output terminals)     |
| IIC (simple circuit): Max. external inductivity $L_o$ / Max. external capacitance $C_o$ | 2 mH / 107 nF                   |
| IIB (simple circuit): Max. external inductivity $L_o$ / Max. external capacitance $C_o$ | 4 mH / 820 nF                   |

### Safety data: Signal conditioner operation

|                     |                              |
|---------------------|------------------------------|
| Note                | Signal conditioner operation |
| Input voltage $U_i$ | $\leq 30$ V                  |

# MACX MCR-EX-SL-RPSSI-I-UP - Power/input isolating amplifier

2865793

<https://www.phoenixcontact.com/in/products/2865793>

|                                      |                                |
|--------------------------------------|--------------------------------|
| Input current $I_i$                  | $\leq 150$ mA                  |
| Max. internal inductance $L_i$       | negligible                     |
| Max. internal capacitance $C_i$      | negligible                     |
| Safety-related maximum voltage $U_m$ | 253 V AC/DC (Supply terminals) |
|                                      | 253 V AC (Output terminals)    |
|                                      | 125 V DC (Output terminals)    |

## Interfaces

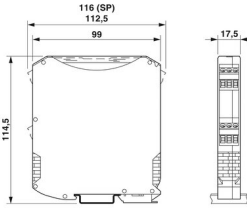
### Data communication (bypass)

|                     |                  |
|---------------------|------------------|
| HART function       | Yes              |
| Protocols supported | HART-transparent |

## Signaling

|                |                            |
|----------------|----------------------------|
| Status display | Green LED (supply voltage) |
|----------------|----------------------------|

## Dimensions

|                     |  |
|---------------------|--|
| Dimensional drawing |  |
| Width               | 17.5 mm  |
| Height              | 112.5 mm   |
| Depth               | 113.7 mm   |
| Depth NS 35/7,5     | 114.5 mm (Snapped onto DIN rail NS 35/7,5 in accordance with EN 60715)               |

## Material specifications

|  |              |
|--|--------------|
| Flammability rating according to UL 94 | V0 (Housing) |
| Housing material                       | PA 6.6-FR    |

## Environmental and real-life conditions

### Ambient conditions

|   |  |
|---|--|
| Degree of protection                    | IP20 (not assessed by UL)                |
| Ambient temperature (operation)         | -20 °C ... 60 °C (Any mounting position) |
| Ambient temperature (storage/transport) | -40 °C ... 80 °C                         |
| Altitude                                | $\leq 2000$ m                            |
| Permissible humidity (operation)        | 10 % ... 95 % (non-condensing)           |

## Approvals

# MACX MCR-EX-SL-RPSSI-I-UP - Power/input isolating amplifier



2865793

<https://www.phoenixcontact.com/in/products/2865793>

## CE

|             |              |
|-------------|--------------|
| Certificate | CE-compliant |
| Note        | and EN 61326 |

## ATEX

|                |  |
|----------------|--|
| Identification | <input type="checkbox"/> II (1) G [Ex ia Ga] IIC/IIB           |
|                | <input type="checkbox"/> II (1) D [Ex ia Da] IIIC              |
|                | <input type="checkbox"/> II 3(1) G Ex nA [ia Ga] IIC/IIB T4 Gc |
| Certificate    | BVS 08 ATEX E 094 X  |

## IECEX

|                |                             |
|----------------|-----------------------------|
| Identification | [Ex ia Ga] IIC/IIB          |
|                | [Ex ia Da] IIIC             |
|                | Ex nA [ia Ga] IIC/IIB T4 Gc |
| Certificate    | IECEX BVS 08.0035X          |

## CCC / China-Ex

|                |                             |
|----------------|-----------------------------|
| Identification | [Ex ia Ga] IIC              |
|                | [Ex iaD]                    |
|                | Ex nA [ia Ga] IIC/IIB T4 Gc |
| Certificate    | NEPSI GYJ20.1310X           |

## UL, USA/Canada

|                |  |
|----------------|--|
| Identification | Class I Div 2; IS for Class I, II, III Div 1 |
| Certificate    | <input type="checkbox"/> , C.D.-No 83104549  |

## Safety Integrity Level (SIL / SILCL, IEC 61508)

|                |            |
|----------------|------------|
| Identification | 2          |
| Certificate    | ZP/C031/20 |

## Systematic Capability (SC / SILCL)

|                |   |
|----------------|---|
| Identification | 3 |
|----------------|---|

## INMETRO

|                |                         |
|----------------|-------------------------|
| Identification | [Ex ia Ga] IIC          |
|                | [Ex ia Da] IIIC         |
|                | Ex ec [ia Ga] IIC T4 Gc |
| Certificate    | DNV 18.0138 X           |

## EAC Ex

|                |  |
|----------------|--|
| Identification | <input type="checkbox"/> [Ex ia Ga] IIC  |
|                | <input type="checkbox"/> [Ex ia Da] IIIC |
| Certificate    | RU C-DE.AB72.B.00093/19                  |

## EMC data

|                |              |
|----------------|--------------|
| Noise immunity | EN 61000-6-2 |
|----------------|--------------|

# MACX MCR-EX-SL-RPSSI-I-UP - Power/input isolating amplifier



2865793

<https://www.phoenixcontact.com/in/products/2865793>

|                               |  |
|-------------------------------|--|
| Note                          | When being exposed to interference, there may be minimal deviations. |
| Electromagnetic compatibility | Conformance with EMC directive                                       |
| Noise emission                | EN 61000-6-4   |

## Electromagnetic HF field

|  |                          |
|--|--------------------------|
| Designation  | Electromagnetic RF field |
| Standards/regulations                                  | EN 61000-4-3             |
| Typical deviation from the measuring range final value | 1 %                      |

## Fast transients (burst)

|  |                         |
|--|-------------------------|
| Designation  | Fast transients (burst) |
| Standards/regulations                                  | EN 61000-4-4            |
| Typical deviation from the measuring range final value | 1 %                     |

## Conducted interference

|  |                         |
|--|-------------------------|
| Designation  | Conducted interferences |
| Standards/regulations                                  | EN 61000-4-6            |
| Typical deviation from the measuring range final value | 1 %                     |

## Standards and regulations

|                      |                 |
|----------------------|-----------------|
| Electrical isolation | 3-way isolation |
|----------------------|-----------------|

## GB Standard

|                       |            |
|-----------------------|------------|
| Standards/regulations | GB 3626.20 |
|                       | GB 3836.1  |
|                       | GB 3836.4  |
|                       | GB 3836.8  |
|                       | GB 12476.1 |
|                       | GB 12476.4 |

## Mounting

|               |                   |
|---------------|-------------------|
| Mounting type | DIN rail mounting |
|---------------|-------------------|

# MACX MCR-EX-SL-RPSSI-I-UP - Power/input isolating amplifier

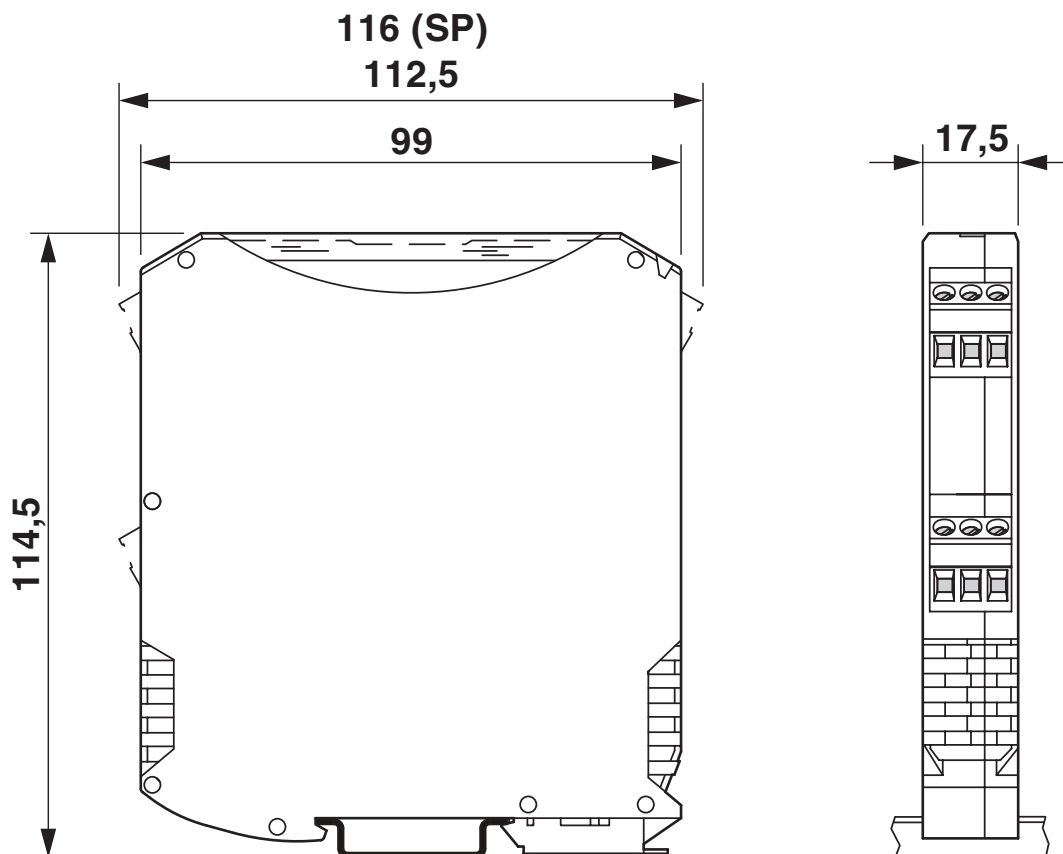


2865793

<https://www.phoenixcontact.com/in/products/2865793>

## Drawings

Dimensional drawing





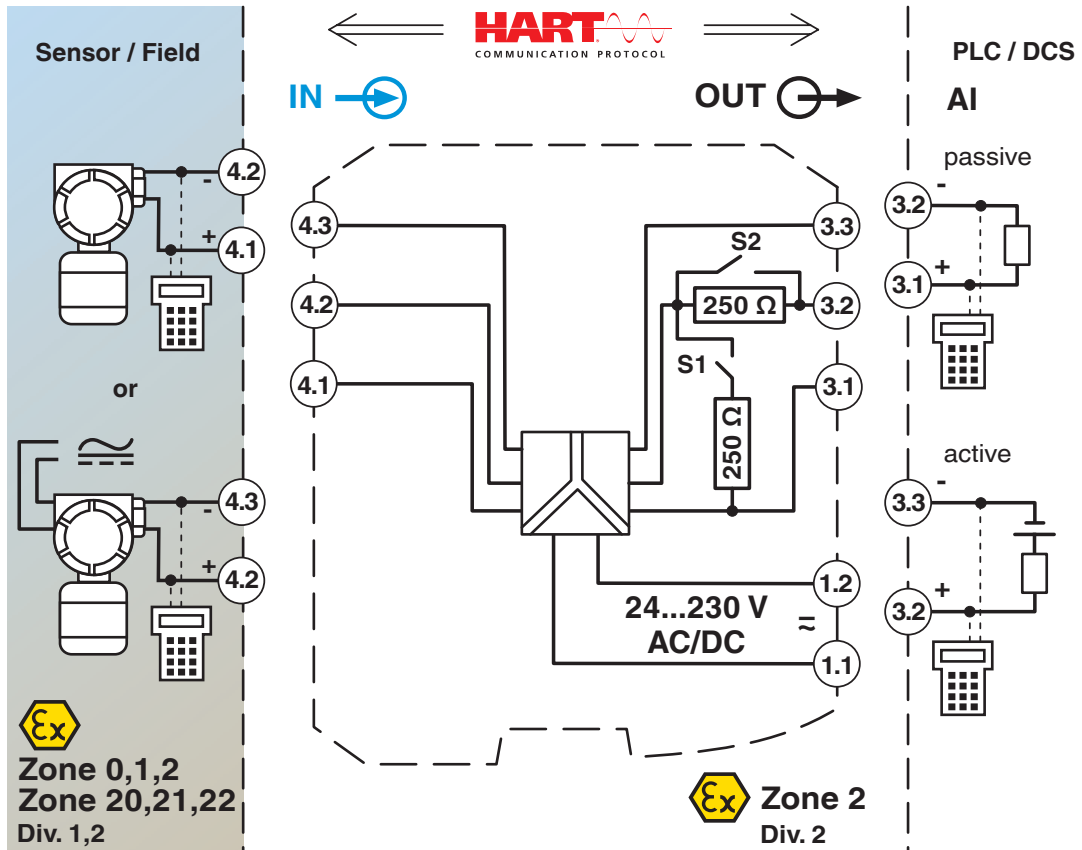
# MACX MCR-EX-SL-RPSSI-I-UP - Power/input isolating amplifier



2865793

<https://www.phoenixcontact.com/in/products/2865793>

Block diagram



# MACX MCR-EX-SL-RPSSI-I-UP - Power/input isolating amplifier



2865793

<https://www.phoenixcontact.com/in/products/2865793>

## Approvals



**UL Listed**

Approval ID: FILE E 330267



**CCC**

Approval ID: 2020322 316001383



**cUL Listed**

Approval ID: FILE E 330267



**EAC Ex**

Approval ID: RU C-DE.AB72.B.00093



**IECEx**

Approval ID: IECEx BVS 08.035X



**cUL Listed**

Approval ID: FILE E 199827



**UL Listed**

Approval ID: FILE E 199827



**ATEX**

Approval ID: BVS 08 ATEX E 094 X

# MACX MCR-EX-SL-RPSSI-I-UP - Power/input isolating amplifier



2865793

<https://www.phoenixcontact.com/in/products/2865793>

## Classifications

### ECLASS

|             |          |
|-------------|----------|
| ECLASS-11.0 | 27210120 |
| ECLASS-12.0 | 27210120 |
| ECLASS-13.0 | 27210120 |

### ETIM

|          |          |
|----------|----------|
| ETIM 8.0 | EC002653 |
|----------|----------|

### UNSPSC

|             |          |
|-------------|----------|
| UNSPSC 21.0 | 39121000 |
|-------------|----------|

# MACX MCR-EX-SL-RPSSI-I-UP - Power/input isolating amplifier



2865793

<https://www.phoenixcontact.com/in/products/2865793>

## Environmental Product Compliance

|            |  |
|------------|--|
| REACH SVHC | Lead 7439-92-1   |
| China RoHS | Environmentally Friendly Use Period = 50 years   |
|            | For information on hazardous substances, refer to the manufacturer's declaration available under "Downloads" |

# MACX MCR-EX-SL-RPSSI-I-UP - Power/input isolating amplifier



2865793

<https://www.phoenixcontact.com/in/products/2865793>

## Accessories

### GW HART USB MODEM - Cable adapter

1003824

<https://www.phoenixcontact.com/in/products/1003824>



USB HART modem cable for communication between a PC and HART devices, cable length: 1m.

---

### MACX MCR-PTB - Power and error message module

2865625

<https://www.phoenixcontact.com/in/products/2865625>



Power and fault signaling module with screw connection, including corresponding ME 17,5 TBUS 1,5/ 5-ST-3,81 GY DIN rail connector

# MACX MCR-EX-SL-RPSSI-I-UP - Power/input isolating amplifier



2865793

<https://www.phoenixcontact.com/in/products/2865793>

## MACX MCR-PTB-SP - Power and error message module

2924184

<https://www.phoenixcontact.com/in/products/2924184>



Power and fault signaling module with Push-in connection, including corresponding ME 17,5 TBUS 1,5/ 5-ST-3,81 GY DIN rail connector

---

## QUINT4-SYS-PS/1AC/24DC/2.5/SC - Power supply unit

2904614

<https://www.phoenixcontact.com/in/products/2904614>



Primary-switched power supply, QUINT POWER, screw connection, DIN rail mounting, supply of devices possible via the TBUS DIN rail connector, protective coating, input: single-phase, output: 24 V DC/2.5 A

# MACX MCR-EX-SL-RPSSI-I-UP - Power/input isolating amplifier



2865793

<https://www.phoenixcontact.com/in/products/2865793>

## MPS-IH WH - Insulating sleeve

0201663

<https://www.phoenixcontact.com/in/products/0201663>

Insulating sleeve, color: white



---

## MPS-IH RD - Insulating sleeve

0201676

<https://www.phoenixcontact.com/in/products/0201676>

Insulating sleeve, color: red



# MACX MCR-EX-SL-RPSSI-I-UP - Power/input isolating amplifier



2865793

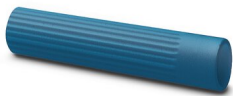
<https://www.phoenixcontact.com/in/products/2865793>

## MPS-IH BU - Insulating sleeve

0201689

<https://www.phoenixcontact.com/in/products/0201689>

Insulating sleeve, color: blue



---

## MPS-IH YE - Insulating sleeve

0201692

<https://www.phoenixcontact.com/in/products/0201692>

Insulating sleeve, color: yellow





# MACX MCR-EX-SL-RPSSI-I-UP - Power/input isolating amplifier



2865793

<https://www.phoenixcontact.com/in/products/2865793>

## MPS-IH GN - Insulating sleeve

0201702

<https://www.phoenixcontact.com/in/products/0201702>

Insulating sleeve, color: green



---

## MPS-IH GY - Insulating sleeve

0201728

<https://www.phoenixcontact.com/in/products/0201728>

Insulating sleeve, color: gray



# MACX MCR-EX-SL-RPSSI-I-UP - Power/input isolating amplifier



2865793

<https://www.phoenixcontact.com/in/products/2865793>

## MPS-IH BK - Insulating sleeve

0201731

<https://www.phoenixcontact.com/in/products/0201731>

Insulating sleeve, color: black



---

## MPS-MT - Test plugs

0201744

<https://www.phoenixcontact.com/in/products/0201744>

Test plugs, with solder connection up to 1 mm<sup>2</sup> conductor cross section, number of positions: 1, color: gray



# MACX MCR-EX-SL-RPSSI-I-UP - Power/input isolating amplifier



2865793

<https://www.phoenixcontact.com/in/products/2865793>

## UC-EMLP (11X9) - Plastic label

0819291

<https://www.phoenixcontact.com/in/products/0819291>



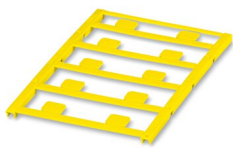
Plastic label, Sheet, white, unlabeled, can be labeled with: BLUEMARK ID COLOR, BLUEMARK ID, BLUEMARK CLED, PLOTMARK, CMS-P1-PLOTTER, mounting type: adhesive, lettering field size: 11 x 9 mm, Number of individual labels: 10

---

## UC-EMLP (11X9) YE - Plastic label

0822602

<https://www.phoenixcontact.com/in/products/0822602>



Plastic label, Sheet, yellow, unlabeled, can be labeled with: BLUEMARK ID COLOR, BLUEMARK ID, BLUEMARK CLED, PLOTMARK, CMS-P1-PLOTTER, mounting type: adhesive, lettering field size: 11 x 9 mm, Number of individual labels: 10

# MACX MCR-EX-SL-RPSSI-I-UP - Power/input isolating amplifier



2865793

<https://www.phoenixcontact.com/in/products/2865793>

## UC-EMLP (11X9) CUS - Plastic label

0824547

<https://www.phoenixcontact.com/in/products/0824547>

Plastic label, can be ordered: by sheet, white, labeled according to customer specifications, mounting type: adhesive, lettering field size: 11 x 9 mm



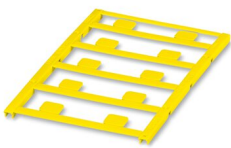
---

## UC-EMLP (11X9) YE CUS - Plastic label

0824548

<https://www.phoenixcontact.com/in/products/0824548>

Plastic label, can be ordered: by sheet, yellow, labeled according to customer specifications, mounting type: adhesive, lettering field size: 11 x 9 mm



# MACX MCR-EX-SL-RPSSI-I-UP - Power/input isolating amplifier



2865793

<https://www.phoenixcontact.com/in/products/2865793>

## UC-EMLP (11X9) SR - Plastic label

0828094

<https://www.phoenixcontact.com/in/products/0828094>



Plastic label, Sheet, silver, unlabeled, can be labeled with: BLUEMARK ID COLOR, BLUEMARK ID, BLUEMARK CLED, PLOTMARK, CMS-P1-PLOTTER, mounting type: adhesive, lettering field size: 11 x 9 mm, Number of individual labels: 10

---

## UC-EMLP (11X9) SR CUS - Plastic label

0828098

<https://www.phoenixcontact.com/in/products/0828098>



Plastic label, can be ordered: by sheet, silver, labeled according to customer specifications, mounting type: adhesive, lettering field size: 11 x 9 mm, Number of individual labels: 10

# MACX MCR-EX-SL-RPSSI-I-UP - Power/input isolating amplifier



2865793

<https://www.phoenixcontact.com/in/products/2865793>

## US-EMLP (11X9) - Plastic label

0828789

<https://www.phoenixcontact.com/in/products/0828789>



Plastic label, Card, white, unlabeled, can be labeled with: BLUEMARK ID COLOR, BLUEMARK ID, THERMOMARK PRIME, THERMOMARK CARD 2.0, THERMOMARK CARD, mounting type: adhesive, lettering field size: 11 x 9 mm, Number of individual labels: 135

---

## US-EMLP (11X9) YE - Plastic label

0828871

<https://www.phoenixcontact.com/in/products/0828871>



Plastic label, Card, yellow, unlabeled, can be labeled with: BLUEMARK ID COLOR, BLUEMARK ID, THERMOMARK PRIME, THERMOMARK CARD 2.0, THERMOMARK CARD, mounting type: adhesive, lettering field size: 11 x 9 mm, Number of individual labels: 135

# MACX MCR-EX-SL-RPSSI-I-UP - Power/input isolating amplifier



2865793

<https://www.phoenixcontact.com/in/products/2865793>

## US-EMLP (11X9) SR - Plastic label

0828872

<https://www.phoenixcontact.com/in/products/0828872>



Plastic label, Card, silver, unlabeled, can be labeled with: BLUEMARK ID COLOR, BLUEMARK ID, THERMOMARK PRIME, THERMOMARK CARD 2.0, THERMOMARK CARD, mounting type: adhesive, lettering field size: 11 x 9 mm, Number of individual labels: 135

---

## LS-EMLP (11X9) WH - Device marker

0831678

<https://www.phoenixcontact.com/in/products/0831678>



Device marker, Sheet, white, unlabeled, can be labeled with: TOPMARK NEO, TOPMARK LASER: without print, mounting type: adhesive, lettering field size: 11 x 9 mm, Number of individual labels: 255

# MACX MCR-EX-SL-RPSSI-I-UP - Power/input isolating amplifier



2865793

<https://www.phoenixcontact.com/in/products/2865793>

## LS-EMLP (11X9) SR - Device marker

0831705

<https://www.phoenixcontact.com/in/products/0831705>

Device marker, Sheet, silver, unlabeled, can be labeled with: TOPMARK NEO, TOPMARK LASER: without print, mounting type: adhesive, lettering field size: 11 x 9 mm, Number of individual labels: 255

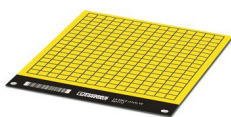


## LS-EMLP (11X9) YE - Device marker

0831732

<https://www.phoenixcontact.com/in/products/0831732>

Device marker, Sheet, yellow, unlabeled, can be labeled with: TOPMARK NEO, TOPMARK LASER: without print, mounting type: adhesive, lettering field size: 11 x 9 mm, Number of individual labels: 255



Phoenix Contact 2023 © - all rights reserved

<https://www.phoenixcontact.com>

PHOENIX CONTACT (I) Pvt. Ltd.

A-58/2, Okhla Industrial Area, Phase - II, New Delhi-110 020

+91.1275.71420

[info@phoenixcontact.co.in](mailto:info@phoenixcontact.co.in)