

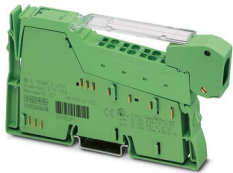
IB IL TEMP 2 UTH-PAC - Temperature module



2861386

<https://www.phoenixcontact.com/in/products/2861386>

Please be informed that the data shown in this PDF document is generated from our Online Catalog. Please find the complete data in the user documentation. Our General Terms of Use for Downloads are valid.



Inline, Temperature measurement terminal, Analog UTH inputs: 2 (Thermocouples or linear voltage), connection technology: 2-conductor, transmission speed in the local bus: 500 kbps, degree of protection: IP20, including Inline connector and labeling field

Product Description

The terminal is designed for use within an Inline station. This terminal can be used to acquire signals from standard thermocouples. It supports 13 different types of thermocouples according to DIN EN 60584-1 and DIN 43710, as well as a linear voltage input of -15 mV to +85 mV.

Your advantages

- 2 differential inputs for thermocouples or linear voltage
- 1 input for an external cold junction, Pt 1000 or Ni 1000
- The channels are parameterized independently of one another via the bus system
- Internal detection and compensation of cold junction temperature (can be parameterized)
- Absolute and differential temperature measurement (can be parameterized)
- Pt 1000 sensor in the vicinity of the connection terminal blocks of the thermocouple inputs for internal measurement of the cold junction temperature
- Measured values can be represented in three different formats

Commercial Data

Item number	2861386
Packing unit	1 pc
Minimum order quantity	1 pc
Sales Key	DRI
Product Key	DRI143
Catalog Page	Page 140 (C-6-2019)
GTIN	4017918894320
Weight per Piece (including packing)	100.6 g
Weight per Piece (excluding packing)	67 g
Customs tariff number	85389099
Country of origin	DE

IB IL TEMP 2 UTH-PAC - Temperature module



2861386

<https://www.phoenixcontact.com/in/products/2861386>

Technical Data

Dimensions

Dimensional drawing	
Width	12.2 mm
Height	136.8 mm
Depth	71.5 mm
Note on dimensions	Housing dimensions

Notes

Utilization restriction

CCEx note	Use in potentially explosive areas is not permitted in China.
-----------	---

Material specifications

Color	green
-------	-------

Interfaces

Inline local bus

Number of interfaces	2
Connection method	Inline data jumper
Transmission speed	500 kbps

System properties

Module

ID code (dec.)	127
ID code (hex)	7F
Length code (hex)	02
Length code (dec)	02
Process data channel	32 bit
Input address area	4 Byte
Output address area	4 Byte
Register length	32 bit
Required parameter data	6 Byte
Required configuration data	4 Byte

Input data

IB IL TEMP 2 UTH-PAC - Temperature module



2861386

<https://www.phoenixcontact.com/in/products/2861386>

Analog

Input name	Analog UTH inputs
Description of the input	Inputs for thermocouples or linear voltage
Number of inputs	2 (Thermocouples or linear voltage)
Connection method	Inline connector
Connection technology	2-conductor
Note regarding the connection technology	Shielded compensating line for TC with encapsulated sensors
A/D conversion time	typ. 120 µs (per channel)
Sensor types that can be used (TC)	U, T, L, J, E, K, N, S, R, B, C, W, HK
Measuring principle	Successive approximation
Measured value representation	16 bits (15 bits + sign bit)
Process data update	max. 30 ms (For both channels)
Protective circuit	Surge protection (TC channels); up to ±40 V

Product properties

Type	modular
Product type	I/O component
Product family	Inline
Scope of delivery	including Inline connector and labeling field
Operating mode	Process data operation with 2 words
Diagnostics messages	Failure of the internal I/O supply I/O error message sent to the bus coupler
	Failure of or insufficient communications power U_L I/O error message sent to the bus coupler
	I/O error Error message in the process data
	User error Error message in the process data

Electrical properties

Maximum power dissipation for nominal condition	0.59 W
---	--------

Potentials

Power consumption	typ. 587 mW
	max. 882 mW

Potentials: Communications power (U_L)

Supply voltage	7.5 V DC (via voltage jumper)
Current draw	max. 60 mA
	typ. 43 mA

Potentials: Supply of analog modules (U_{ANA})

Supply voltage	24 V DC (via voltage jumper)
Supply voltage range	19.2 V DC ... 30 V DC (including all tolerances, including ripple)
Current draw	max. 18 mA
	typ. 11 mA

Connection data

IB IL TEMP 2 UTH-PAC - Temperature module



2861386

<https://www.phoenixcontact.com/in/products/2861386>

Connection technology

Connection name	Inline connector
-----------------	------------------

Conductor connection

Connection method	Spring-cage connection
Conductor cross section rigid	0.08 mm ² ... 1.5 mm ²
Conductor cross section flexible	0.08 mm ² ... 1.5 mm ²
Conductor cross section AWG	28 ... 16
Stripping length	8 mm

Inline connector

Connection method	Spring-cage connection
Conductor cross section, rigid	0.08 mm ² ... 1.5 mm ²
Conductor cross section, flexible	0.08 mm ² ... 1.5 mm ²
Conductor cross section AWG	28 ... 16
Stripping length	8 mm

Environmental and real-life conditions

Ambient conditions

Ambient temperature (operation)	-25 °C ... 55 °C
Degree of protection	IP20
Air pressure (operation)	70 kPa ... 106 kPa (up to 3000 m above sea level)
Air pressure (storage/transport)	70 kPa ... 106 kPa (up to 3000 m above sea level)
Ambient temperature (storage/transport)	-25 °C ... 85 °C
Permissible humidity (operation)	10 % ... 95 % (non-condensing)
Permissible humidity (storage/transport)	10 % ... 95 % (non-condensing)

Standards and regulations

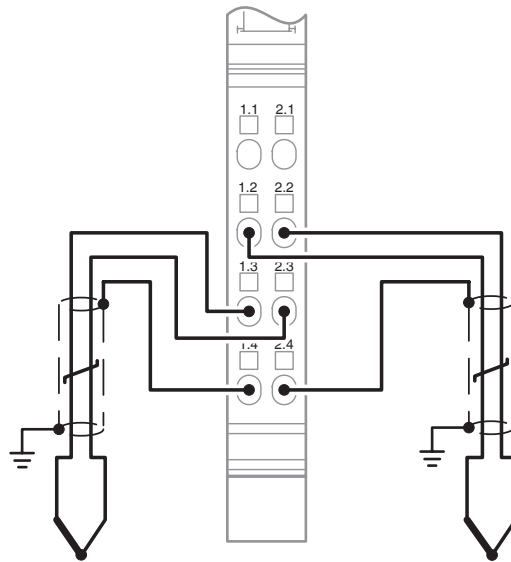
Protection class	III (IEC 61140, EN 61140, VDE 0140-1)
------------------	---------------------------------------

Mounting

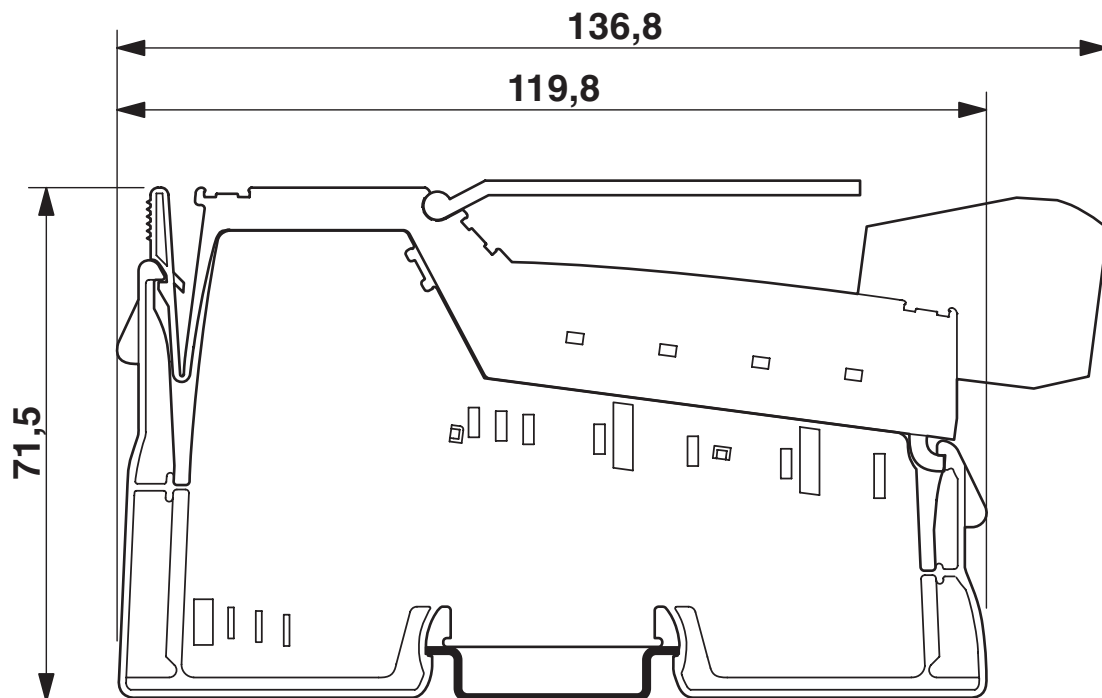
Mounting type	DIN rail mounting
---------------	-------------------

Drawings

Connection diagram



Dimensional drawing



IB IL TEMP 2 UTH-PAC - Temperature module



2861386

<https://www.phoenixcontact.com/in/products/2861386>

Approvals



UL Recognized

Approval ID: FILE E 140324



EAC

Approval ID: TR TS_D_01921-19



DNV GL

Approval ID: TAA00000BN



LR

Approval ID: LR22191720TA



BV

Approval ID: 20977/C0 BV



RINA

Approval ID: ELE121121XG



cUL Listed

Approval ID: FILE E 199827



UL Listed

Approval ID: FILE E 199827

IB IL TEMP 2 UTH-PAC - Temperature module



2861386

<https://www.phoenixcontact.com/in/products/2861386>

Classifications

ECLASS

ECLASS-11.0	27242601
ECLASS-12.0	27242601
ECLASS-13.0	27242601

ETIM

ETIM 8.0	EC001596
----------	----------

UNSPSC

UNSPSC 21.0	32151600
-------------	----------

IB IL TEMP 2 UTH-PAC - Temperature module

2861386

<https://www.phoenixcontact.com/in/products/2861386>



Environmental Product Compliance

REACH SVHC

Lead 7439-92-1

IB IL TEMP 2 UTH-PAC - Temperature module

2861386

<https://www.phoenixcontact.com/in/products/2861386>



Accessories

IB IL SCN 6-SHIELD-TWIN - Inline shield connector

2740245

<https://www.phoenixcontact.com/in/products/2740245>

Inline shield connector



IB IL SCN-6 SHIELD - Inline shield connector

2726353

<https://www.phoenixcontact.com/in/products/2726353>

Inline shield connector



IB IL FIELD 2 - Labeling field

2727501

<https://www.phoenixcontact.com/in/products/2727501>

Labeling field, width: 12.2 mm



IB IL TEMP 2 UTH-PAC - Temperature module

2861386

<https://www.phoenixcontact.com/in/products/2861386>

ESL 62X10 - Insert strip

0809492

<https://www.phoenixcontact.com/in/products/0809492>



Insert strip, Sheet, white, unlabeled, can be labeled with: Office printing systems: Laser printer, mounting type: insert, lettering field size: 62 x 10 mm, Number of individual labels: 72

MTKD-CU/CUNI - Thermoelectric voltage terminal block pair

3100059

<https://www.phoenixcontact.com/in/products/3100059>



Thermoelectric voltage terminal block pair, TC type T, nom. voltage: 400 V, nominal current: 1 A, number of connections: 4, number of positions: 2, connection method: Screw connection, 1 level, cross section: 0.2 mm² - 4 mm², mounting type: NS 35/7,5, NS 35/15, NS 32, color: gray

IB IL TEMP 2 UTH-PAC - Temperature module

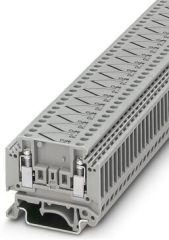
2861386

<https://www.phoenixcontact.com/in/products/2861386>

MTKD-FE/CUNI - Thermoelectric voltage terminal block pair

3100046

<https://www.phoenixcontact.com/in/products/3100046>



Thermoelectric voltage terminal block pair, TC type J, nom. voltage: 400 V, nominal current: 1 A, number of connections: 4, number of positions: 2, connection method: Screw connection, 1 level, cross section: 0.2 mm² - 4 mm², mounting type: NS 35/7,5, NS 35/15, NS 32, color: gray

MTKD-NICR/CUNI - Thermoelectric voltage terminal block pair

3100075

<https://www.phoenixcontact.com/in/products/3100075>



Thermoelectric voltage terminal block pair, TC type E, nom. voltage: 400 V, nominal current: 1 A, number of connections: 4, number of positions: 2, connection method: Screw connection, 1 level, cross section: 0.2 mm² - 4 mm², mounting type: NS 35/7,5, NS 35/15, NS 32, color: gray

IB IL TEMP 2 UTH-PAC - Temperature module

2861386

<https://www.phoenixcontact.com/in/products/2861386>

MTKD-NICR/NI - Thermoelectric voltage terminal block pair

3100062

<https://www.phoenixcontact.com/in/products/3100062>



Thermoelectric voltage terminal block pair, TC type K, nom. voltage: 400 V, nominal current: 1 A, number of connections: 4, number of positions: 2, connection method: Screw connection, 1 level, cross section: 0.2 mm² - 4 mm², mounting type: NS 35/7,5, NS 35/15, NS 32, color: gray

MTKD-E-CU/A-CU - Thermoelectric voltage terminal block pair

3100091

<https://www.phoenixcontact.com/in/products/3100091>



Thermoelectric voltage terminal block pair, TC type R, nom. voltage: 400 V, nominal current: 1 A, number of connections: 4, number of positions: 2, connection method: Screw connection, 1 level, cross section: 0.2 mm² - 4 mm², mounting type: NS 35/7,5, NS 35/15, NS 32, color: gray

IB IL TEMP 2 UTH-PAC - Temperature module



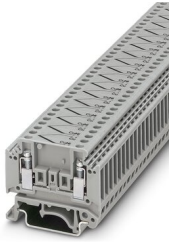
2861386

<https://www.phoenixcontact.com/in/products/2861386>

MTKD-S-CU/E-CU - Thermoelectric voltage terminal block pair

3100101

<https://www.phoenixcontact.com/in/products/3100101>



Thermoelectric voltage terminal block pair, TC type B, nom. voltage: 400 V, nominal current: 1 A, number of connections: 4, number of positions: 2, connection method: Screw connection, cross section: 0.2 mm² - 4 mm², mounting type: NS 35/7,5, NS 35/15, NS 32, color: gray

Phoenix Contact 2023 © - all rights reserved

<https://www.phoenixcontact.com>

PHOENIX CONTACT (I) Pvt. Ltd.

A-58/2, Okhla Industrial Area, Phase - II, New Delhi-110 020

+91.1275.71420

info@phoenixcontact.co.in