

FL CAT5 FLEX - Installation cable



2744830

<https://www.phoenixcontact.com/in/products/2744830>

Please be informed that the data shown in this PDF document is generated from our Online Catalog. Please find the complete data in the user documentation. Our General Terms of Use for Downloads are valid.



By the meter, Installation cable, Ethernet CAT5 (100 Mbps), shielded, PUR halogen-free, water blue RAL 5021, 4-wire (2x2xAWG26/7; SF/UTP), color single wire: white/orange-orange, white/green-green, cable length: Free entry (1.0 ... 1000.0 m)

Commercial Data

Item number	2744830
Packing unit	1 m
Minimum order quantity	1 m
Note	Made to Order (non-returnable)
Sales Key	BF1
Product Key	BF1CJI
Catalog Page	Page 390 (C-8-2015)
GTIN	4017918600501
Weight per Piece (including packing)	40.24 g
Weight per Piece (excluding packing)	40.24 g
Customs tariff number	85444993
Country of origin	DE

FL CAT5 FLEX - Installation cable



2744830

<https://www.phoenixcontact.com/in/products/2744830>

Technical Data

Product properties

Product type	Data cable by the meter
Number of positions	4
Sensor type	Ethernet

Electrical properties

Nominal voltage U_N	48 V AC
Transmission medium	Copper

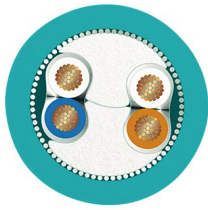
Interfaces

Signal type/category	Ethernet CAT5 (IEC 11801), 100 Mbps
----------------------	-------------------------------------

Cable/line

Cable length	Free entry (1.0 ... 1000.0 m)
--------------	-------------------------------

Ethernet [93E]

Dimensional drawing	
Cable weight	43 kg/km
Number of positions	4
Shielded	yes
Cable type	Ethernet [93E]
Conductor structure	2x2xAWG26/7; SF/UTP
Signal runtime	4.3 ns/m
Signal speed	0.77 c
Conductor structure signal line	7x 0.16 mm
AWG signal line	26
Conductor cross section	2x 2x 0.14 mm ²
Wire diameter incl. insulation	1 mm -0.2 mm
External cable diameter	5.75 mm ±0.15 mm
Outer sheath, material	PUR
External sheath, color	water blue RAL 5021
Conductor material	Bare Cu litz wires
Material wire insulation	Foam-Skin PE
Single wire, color	white/orange-orange, white/green-green
Twisted pairs	2 cores to the pair

FL CAT5 FLEX - Installation cable



2744830

<https://www.phoenixcontact.com/in/products/2744830>

Overall twist	Two pairs with two fillers to the core
Optical shield covering	85 %
Max. conductor resistance	$\leq 284 \Omega/\text{km}$
Insulation resistance	$\geq 5 \text{ G}\Omega \cdot \text{km}$
Coupling resistance	$\leq 5.00 \text{ m}\Omega/\text{m}$ (at 20 MHz)
Wave impedance	$100 \Omega \pm 15 \%$ (at 1 ... 100 MHz)
Cable capacity	nom. 48 nF/km (At 800 Hz)
Nominal voltage, cable	50 V _{rms}
	125 V (Peak value, not for high-power applications)
Test voltage Core/Core	1000 V _{rms}
Test voltage Core/Shield	500 V _{rms}
Smallest bending radius, fixed installation	30 mm (cable, fixed installation)
Smallest bending radius, movable installation	78 mm (Cable, flexible installation)
Tensile strength	$\leq 50 \text{ N}$ (temporary)
	$\leq 10 \text{ N}$ (Permanent)
Near end crosstalk attenuation (NEXT)	66 dB/m (with 1 MHz)
	57 dB/m (at 4 MHz)
	52 dB/m (at 10 MHz)
	50 dB/m (at 16 MHz)
	47 dB/m (at 20 MHz)
	45 dB/m (at 31.25 MHz)
	40 dB/m (at 62.5 MHz)
	36 dB/m (at 100 MHz)
Crosstalk attenuation (ACR)	6.57 dB/m (with 1 MHz)
	5.64 dB/m (at 4 MHz)
	5.12 dB/m (at 10 MHz)
	4.89 dB/m (at 16 MHz)
	4.57 dB/m (at 20 MHz)
	4.34 dB/m (at 31.25 MHz)
	3.77 dB/m (at 62.5 MHz)
	3.31 dB/m (at 100 MHz)
Shield attenuation	0.028 dB/m (with 1 MHz)
	0.06 dB/m (at 4 MHz)
	0.085 dB/m (at 10 MHz)
	0.115 dB/m (at 16 MHz)
	0.128 dB/m (at 20 MHz)
	0.162 dB/m (at 31.25 MHz)
	0.23 dB/m (at 62.5 MHz)
	0.29 dB/m (at 100 MHz)
Flame resistance	according to VDE 0482 Part 265-2-1
	according to IEC 332-1
Ambient temperature (operation)	-30 °C ... 80 °C (cable, fixed installation)
Ambient temperature (installation)	-5 °C ... 60 °C

FL CAT5 FLEX - Installation cable

2744830

<https://www.phoenixcontact.com/in/products/2744830>



Approvals



EAC-RoHS

Approval ID: RU D-DE.HB35.B.00395

FL CAT5 FLEX - Installation cable



2744830

<https://www.phoenixcontact.com/in/products/2744830>

Classifications

ECLASS

ECLASS-11.0	27061801
ECLASS-12.0	27061801
ECLASS-13.0	27061801

ETIM

ETIM 8.0	EC003249
----------	----------

UNSPSC

UNSPSC 21.0	26121600
-------------	----------

FL CAT5 FLEX - Installation cable



2744830

<https://www.phoenixcontact.com/in/products/2744830>

Environmental Product Compliance

China RoHS	Environmentally friendly use period: unlimited = EFUP-e
	No hazardous substances above threshold values

FL CAT5 FLEX - Installation cable

2744830

<https://www.phoenixcontact.com/in/products/2744830>



Accessories

FL PLUG RJ45 GR/2 - RJ45 connector

2744856

<https://www.phoenixcontact.com/in/products/2744856>



RJ45 connector, design: RJ45, degree of protection: IP20, number of positions: 8, 1 Gbps, CAT5 (IEC 11801:2002), material: Plastic, connection method: Crimp connection, cable outlet: straight, color: green, Ethernet

FL PLUG RJ45 GN/2 - RJ45 connector

2744571

<https://www.phoenixcontact.com/in/products/2744571>



RJ45 connector, design: RJ45, degree of protection: IP20, number of positions: 8, 1 Gbps, CAT5 (IEC 11801:2002), material: Plastic, connection method: Crimp connection, cable outlet: straight, color: green, Ethernet

FL CAT5 FLEX - Installation cable

2744830

<https://www.phoenixcontact.com/in/products/2744830>



FL CRIMPTOOL - Assembly tool

2744869

<https://www.phoenixcontact.com/in/products/2744869>

Crimping pliers, for assembling the RJ45 plugs FL PLUG RJ45..., for assembly on site



FL-PP-RJ45-SCC - Patch panels

2901642

<https://www.phoenixcontact.com/in/products/2901642>

Patch panel, one RJ45 jack to 8 spring-force connection terminal blocks (1:1 assignment), CAT5e, 10/100/1000 Mbps, DIN rail adapter, IP20, option of shield contacting to the DIN rail via jumpers



FL CAT5 FLEX - Installation cable

2744830

<https://www.phoenixcontact.com/in/products/2744830>



FL-PP-RJ45-SC - Patch panels

2901643

<https://www.phoenixcontact.com/in/products/2901643>



Patch panel, one RJ45 jack to 8 screw connection terminal blocks (1:1 assignment), CAT5e, 10/100/1000 Mbps, DIN rail adapter, IP20, option of shield contacting to the DIN rail via jumpers

FL-PP-RJ45-LSA - Patch panels

2901645

<https://www.phoenixcontact.com/in/products/2901645>



Patch panel, one RJ45 jack to 8 LSA connection terminal blocks (1:1 assignment), CAT5e, 10/100/1000 Mbps, DIN rail adapter, IP20, option of shield contacting to the DIN rail via bridges

FL CAT5 FLEX - Installation cable

2744830

<https://www.phoenixcontact.com/in/products/2744830>



FL-PP-RJ45/RJ45 - Patch panels

2901646

<https://www.phoenixcontact.com/in/products/2901646>



Patch panel, two RJ45 jacks (1:1 assignment), CAT5e, 10/100/1000 Mbps, DIN rail adapter, IP20, option of shield contacting to the DIN rail via jumpers

FL ISOLATOR 100-RJ/RJ - Network isolator

2313931

<https://www.phoenixcontact.com/in/products/2313931>



Passive network isolator for electrical isolation in Ethernet networks. This protects Ethernet devices from potential differences of up to 4 kV. Can be used for transmission speeds of up to 100 Mbps. Possible to connect two RJ45 plugs.

FL CAT5 FLEX - Installation cable

2744830

<https://www.phoenixcontact.com/in/products/2744830>



FL ISOLATOR 100-RJ/SC - Network isolator

2313928

<https://www.phoenixcontact.com/in/products/2313928>



Passive network isolator for electrical isolation in Ethernet networks. This protects Ethernet devices from potential differences of up to 4 kV. Can be used for transmission speeds of up to 100 Mbps. Connection using RJ45 and COMBICON plug-in screw terminal block.

FL ISOLATOR 1000-RJ/RJ - Network isolator

2313915

<https://www.phoenixcontact.com/in/products/2313915>



Passive network isolator for electrical isolation in Ethernet networks. This protects Ethernet devices from potential differences of up to 4 kV. Can be used for transmission speeds of up to 1 Gbps. Possible to connect two RJ45 plugs.

FL CAT5 FLEX - Installation cable

2744830

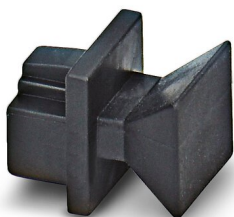
<https://www.phoenixcontact.com/in/products/2744830>



FL RJ45 PROTECT CAP - Dust protection

2832991

<https://www.phoenixcontact.com/in/products/2832991>



Dust protection caps for RJ45 socket

FL CAT5 HEAVY CONF/ - Network cable

2744827

<https://www.phoenixcontact.com/in/products/2744827>



CAT5-SF/UTP cable (J-02YS(ST)C HP 2 x 2 x 24 AWG), heavy-duty installation cable, 2 x 2 x 0.22 mm², solid conductor, shielded, outer sheath: 7.8 mm diameter, inner sheath: 5.75 mm ± 0.15 mm diameter, preassembled on both sides with RJ45 plug, crossover or line

FL CAT5 FLEX - Installation cable

2744830

<https://www.phoenixcontact.com/in/products/2744830>



FL CAT5 HEAVY - Data cable

2744814

<https://www.phoenixcontact.com/in/products/2744814>



CAT5-SF/UTP cable (J-02YS(ST)C HP 2 x 2 x 24 AWG), heavy-duty installation cable, 2 x 2 x 0.22 mm², solid conductor, shielded, outer sheath: 7.8 mm diameter, inner sheath: 5.75 mm ± 0.15 mm diameter

FL CAT5 FLEX CONF/ - Network cable

2744843

<https://www.phoenixcontact.com/in/products/2744843>



CAT5-SF/UTP cable (J-LI02YS(ST)C H 2 x 2 x 26 AWG), light-duty, flexible installation cable 2 x 2 x 0.14 mm², stranded, shielded, outer sheath: 5.75 mm ± 0.15 mm diameter, preassembled on both sides with RJ45 plug, crossover or line assignment

FL CAT5 FLEX - Installation cable

2744830

<https://www.phoenixcontact.com/in/products/2744830>



FL CAT5 TERMINAL BOX - Patch panels

2744610

<https://www.phoenixcontact.com/in/products/2744610>



Patch panel, one RJ45 jack to 4 screw connection terminal blocks (assignment 1, 2, 3, 6), CAT5e, 10/100 Mbps, DIN rail adapter, IP20, shield contacting on DIN rail

Phoenix Contact 2023 © - all rights reserved

<https://www.phoenixcontact.com>

PHOENIX CONTACT (I) Pvt. Ltd.

A-58/2, Okhla Industrial Area, Phase - II, New Delhi-110 020

+91.1275.71420

info@phoenixcontact.co.in