

PLD E 400 W 375 - LED enclosure light



2702222

<https://www.phoenixcontact.com/in/products/2702222>

Please be informed that the data shown in this PDF document is generated from our online catalog. Please find the complete data in the user documentation. Our general terms of use for downloads are valid.



LED enclosure light, 24 V DC, length: 375 mm, degree of protection: IP20, can be swiveled, can be switched in series, including mounting accessories

Product description

The LED light is designed to illuminate the interior of control cabinets. The prismatic integrated into the light cover ensures optimum illumination of the control cabinet. You can mount the light without tools via the clip system. You can connect several lights in succession. You can switch the light on and off either via the integrated button or via an external door position switch.

Your advantages

- Tool-free mounting, thanks to clip fastening
- Wiring via sensor/actuator cables with M8 snap-in technology
- Series connection reduces cabling effort for control cabinets arranged in series
- Optimum lighting of the control cabinet, thanks to integrated prismatics and capacity to swivel
- Swiveling enables optimum adjustment to the relevant control cabinet depth
- LED service life of 50,000 h (L70 value) prevents bulb replacement

Commercial data

Item number	2702222
Packing unit	1 pc
Minimum order quantity	1 pc
Note	Made to order (non-returnable)
Sales key	DRL
Product key	DRL232
Catalog page	Page 499 (C-6-2019)
GTIN	4055626057781
Weight per piece (including packing)	218.1 g
Weight per piece (excluding packing)	170 g
Customs tariff number	94054231
Country of origin	DE

PLD E 400 W 375 - LED enclosure light



2702222

<https://www.phoenixcontact.com/in/products/2702222>

Technical data

Notes

Utilization restriction

EMC note	EMC: class A product, see manufacturer's declaration in the download area
----------	---

Product properties

Product type	Control cabinet lighting
Application	Control cabinet
Mounting position	any
Special properties	can be swiveled $\pm 90^\circ$ swivel range can be switched in series including mounting accessories
Socket type	No socket

Data management status

Article revision	02
------------------	----

Electrical properties

Maximum power dissipation for nominal condition	4.2 W
---	-------

Supply: Module electronics

Connection method	M8 connector (snap-in)
Number of positions	3
Supply voltage	24 V DC
Supply voltage range	19.2 V DC ... 30 V DC
Power consumption	3 W

Connection data

Connection method	M8 connector (snap-in)
-------------------	------------------------

Signaling

Light properties


Source of light type	LED
Number of LEDs	12
Color temperature	5000 K
Color rendering index	75
Luminous flux	340 lm (Net luminous flux)
Illumination	max. 845 lx (50 cm distance) max. 210 lx (Distance of 1 m)
Ordinance	Delegated Regulation (EU) 2019/2015
Energy efficiency class	E (1 light source)
Note	This product contains an energy efficiency class E light source.

PLD E 400 W 375 - LED enclosure light

2702222

<https://www.phoenixcontact.com/in/products/2702222>

Dimensions

Dimensional drawing	
Width	23 mm
Height	38 mm
Length	375 mm

Material specifications

Color	traffic grey A RAL 7042
Material ()	Plastic
Housing material	Plastic

Environmental and real-life conditions

Ambient conditions

Ambient temperature (operation)	-25 °C ... 60 °C
Degree of protection	IP20
Air pressure (operation)	70 kPa ... 106 kPa (up to 3000 m above sea level)
Air pressure (storage/transport)	70 kPa ... 106 kPa (up to 3000 m above sea level)
Ambient temperature (storage/transport)	-40 °C ... 85 °C
Permissible humidity (operation)	5 % ... 95 %
Permissible humidity (storage/transport)	5 % ... 95 %

Standards and regulations

Protection class	III
------------------	-----

Mounting

Mounting type	Clip mounting
Assembly note	Magnet attachment available as an accessory
	Screw fixings available as accessories
Mounting position	any

PLD E 400 W 375 - LED enclosure light

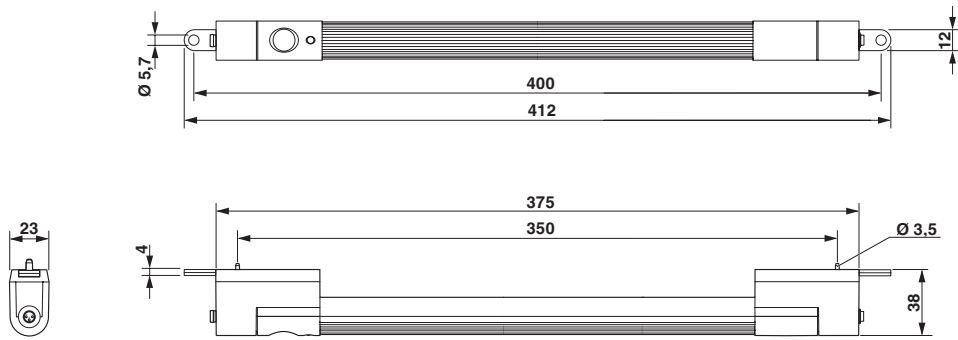


2702222

<https://www.phoenixcontact.com/in/products/2702222>

Drawings

Dimensional drawing



Dimensional drawing for screw mounting

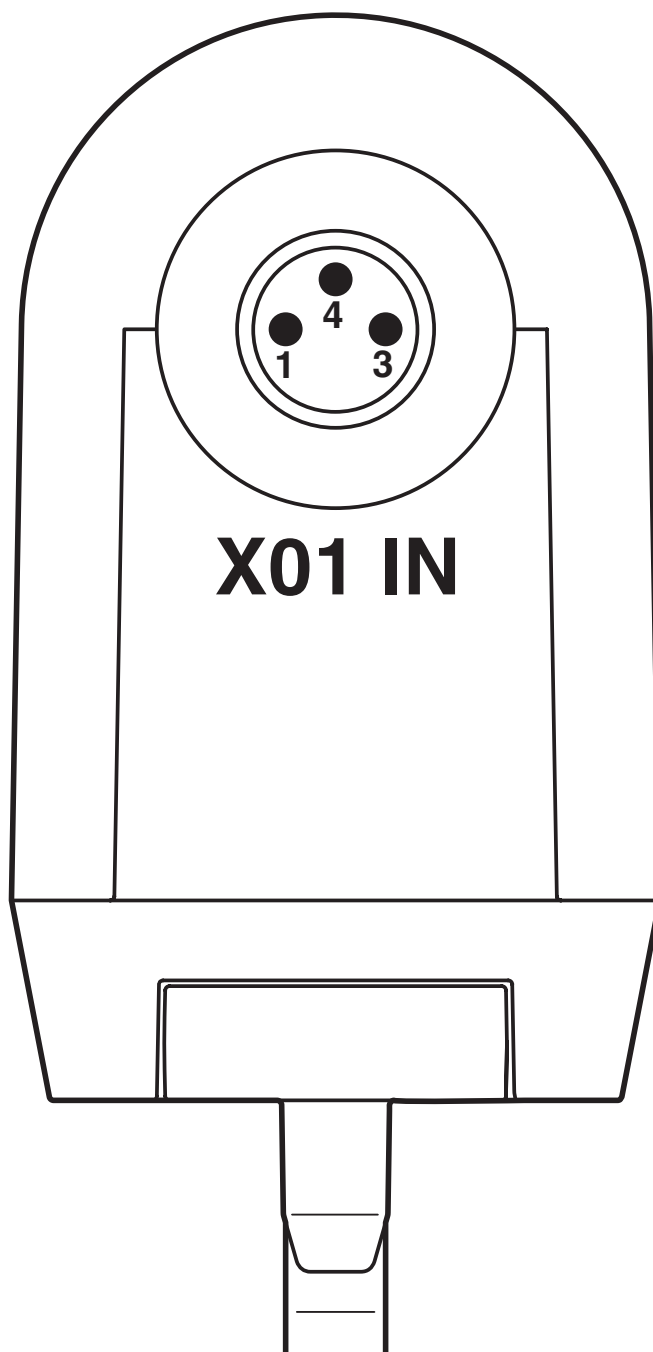
PLD E 400 W 375 - LED enclosure light

2702222

<https://www.phoenixcontact.com/in/products/2702222>



Connection diagram



Connection of the supply voltage of a light

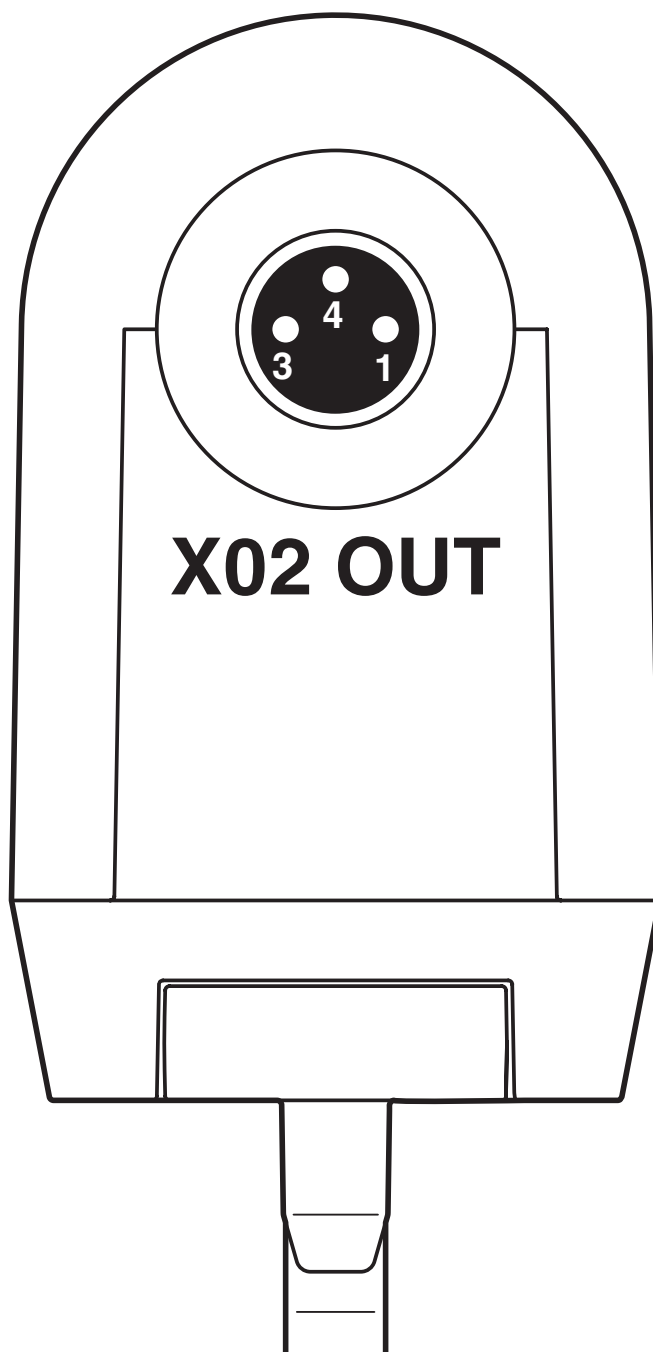
PLD E 400 W 375 - LED enclosure light

2702222

<https://www.phoenixcontact.com/in/products/2702222>



Connection diagram



Forwarding of the supply voltage with the series connection of lights

PLD E 400 W 375 - LED enclosure light

2702222

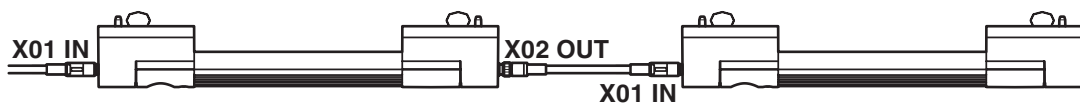
<https://www.phoenixcontact.com/in/products/2702222>

Schematic diagram



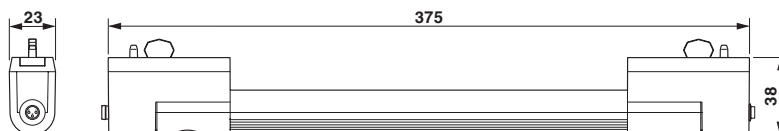
Connection of a light

Schematic diagram



Series connection of two lights

Dimensional drawing



Dimensional drawing

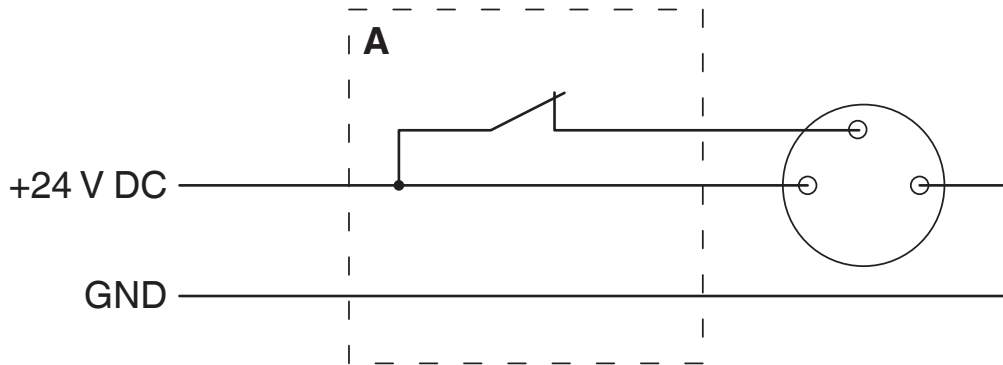
PLD E 400 W 375 - LED enclosure light



2702222

<https://www.phoenixcontact.com/in/products/2702222>

Connection diagram



Connection of the light using a door position switch (A)

PLD E 400 W 375 - LED enclosure light



2702222

<https://www.phoenixcontact.com/in/products/2702222>

Classifications

ECLASS

ECLASS-11.0	27182808
ECLASS-12.0	27182808
ECLASS-13.0	27182808

ETIM

ETIM 8.0	EC000321
----------	----------

UNSPSC

UNSPSC 21.0	32151500
-------------	----------

PLD E 400 W 375 - LED enclosure light



2702222

<https://www.phoenixcontact.com/in/products/2702222>

Environmental product compliance

EU RoHS

Fulfills EU RoHS substance requirements	Yes, No exemptions
---	--------------------

China RoHS

Environment friendly use period (EFUP)	EFUP-E
	No hazardous substances above the limits

EU REACH SVHC

REACH candidate substance (CAS No.)	No substance above 0.1 wt%
-------------------------------------	----------------------------

PLD E 400 W 375 - LED enclosure light

2702222

<https://www.phoenixcontact.com/in/products/2702222>

Accessories

STEP-PS/ 1AC/24DC/0.5 - Power supply unit

2868596

<https://www.phoenixcontact.com/in/products/2868596>



Primary-switched STEP POWER power supply for DIN rail and direct mounting, input: 1-phase, output: 24 V DC/0.5 A

STEP-PS/ 1AC/24DC/0.75/FL - Power supply unit

2868622

<https://www.phoenixcontact.com/in/products/2868622>



Primary-switched STEP POWER power supply for DIN rail mounting, input: 1-phase, output: 24 V DC/0.75 A

PLD E 400 W 375 - LED enclosure light

2702222

<https://www.phoenixcontact.com/in/products/2702222>



PLD E 400-PS/1AC/24DC/30W - Mains plug

2702436

<https://www.phoenixcontact.com/in/products/2702436>

Plug-in power supply unit for class 400 LED enclosure lights, including country-specific plug adapters for Europe, Great Britain, USA and Australia; max. output voltage 30 W



SAC-3P- 3,0-PUR/M 8SIFS AE - Sensor/actuator cable

1417698

<https://www.phoenixcontact.com/in/products/1417698>

Sensor/actuator cable, 3-position, PUR halogen-free, black-gray RAL 7021, free cable end, on Socket straight M8 Snap-in, coding: A, cable length: 3 m, with ferrules



PLD E 400 W 375 - LED enclosure light

2702222

<https://www.phoenixcontact.com/in/products/2702222>

SAC-3P-M 8MS/ 0,6-PUR/M 8SIFS - Sensor/actuator cable

1417699

<https://www.phoenixcontact.com/in/products/1417699>



Sensor/actuator cable, 3-position, PUR halogen-free, black-gray RAL 7021, Plug straight M8, coding: A, on Socket straight M8 Snap-in, cable length: 0.6 m

SAC-3P-M 8MS/ 1,0-PUR/M 8SIFS - Sensor/actuator cable

1417700

<https://www.phoenixcontact.com/in/products/1417700>



Sensor/actuator cable, 3-position, PUR halogen-free, black-gray RAL 7021, Plug straight M8, coding: A, on Socket straight M8 Snap-in, cable length: 1 m

PLD E 400 W 375 - LED enclosure light

2702222

<https://www.phoenixcontact.com/in/products/2702222>



SAC-3P-M 8MS/ 3,0-PUR/M 8SIFS - Sensor/actuator cable

1417701

<https://www.phoenixcontact.com/in/products/1417701>



Sensor/actuator cable, 3-position, PUR halogen-free, black-gray RAL 7021, Plug straight M8, coding: A, on Socket straight M8 Snap-in, cable length: 3 m

PLD E 400-DS-3,0/FS/0,6 - Door position switch

2702336

<https://www.phoenixcontact.com/in/products/2702336>



Door position switch with 3 m cable with open cable end and 0.6 m cable with M8 socket (Snap-in), including mounting accessories

PLD E 400 W 375 - LED enclosure light

2702222

<https://www.phoenixcontact.com/in/products/2702222>



PLD E 400-DS-MS/1,0-FS/0,6 - Door position switch

2702337

<https://www.phoenixcontact.com/in/products/2702337>

Door position switch with 1 m cable with M8 plug and 0.6 m cable with M8 socket (Snap-in), including mounting accessories



PLD E 400-ME MM - Mounting material

2702312

<https://www.phoenixcontact.com/in/products/2702312>

Set for magnetic mounting of class 400 PLD enclosure lights



PLD E 400 W 375 - LED enclosure light



2702222

<https://www.phoenixcontact.com/in/products/2702222>

PLD E 400-ME SM - Mounting material

2702313

<https://www.phoenixcontact.com/in/products/2702313>

Set for screw mounting of class 400 PLD enclosure lights, including screws and washers



PLD E 400-ME CM - Mounting material

2702314

<https://www.phoenixcontact.com/in/products/2702314>

Set consisting of two clip retainers for class 400 PLD enclosure lights (replacement part)



Phoenix Contact 2024 © - all rights reserved
<https://www.phoenixcontact.com>

PHOENIX CONTACT (I) Pvt. Ltd.
A-58/2, Okhla Industrial Area, Phase - II, New Delhi-110 020

+91.1275.71420
info@phoenixcontact.co.in