

# CUTFOX 10 - Cable-cutting tool



1206829

<https://www.phoenixcontact.com/in/products/1206829>

Please be informed that the data shown in this PDF document is generated from our Online Catalog. Please find the complete data in the user documentation. Our General Terms of Use for Downloads are valid.

Automatic cutting device for cables, litz wires, and shrink sleeves, for 100 - 240 V mains voltage



## Your advantages

- The cutting machine cuts conductors, cables, and similar profiles
- No adjustments are required thanks to the automatic zero cut, which is performed when the start button is pressed
- To insert the conductors simply open the front cover
- The desired length and number is entered via the user-friendly display
- The drive and guide rolls automatically adjust to each inserted diameter

## Commercial Data

Item number	1206829
Packing unit	1 pc
Minimum order quantity	1 pc
Sales Key	BH3
Product Key	BH3211
Catalog Page	Page 393 (C-3-2019)
GTIN	4017918178871
Weight per Piece (including packing)	12,534 g
Weight per Piece (excluding packing)	12,393 g
Customs tariff number	84798100
Country of origin	DE

# CUTFOX 10 - Cable-cutting tool



1206829

<https://www.phoenixcontact.com/in/products/1206829>

## Technical Data

### Notes

General	Cutting efficiency
General	Automatic cross-section setting

### Product properties

Product type	Cutting machine
Dialog language	German / English / French / Italian
Maximum number of cuts	9999
Maximum throughput	0.008
Section length	2 mm ... 999999 mm
Host system interface	RS-232
Feed rate	0.5 m/s
Min. cross section	0.08 mm <sup>2</sup>
Max. cross section	10 mm <sup>2</sup>

### Electrical properties

Frequency range	50 Hz ... 60 Hz
Power consumption	150 VA

### Supply

Supply voltage range	100 V ... 240 V
----------------------	-----------------

### Dimensions

Width	194 mm
Height	228 mm
Length	301 mm

### External dimensions

Outside diameter	8 mm
------------------	------

### Cable/line

External cable diameter	≤ 8 mm
-------------------------	--------

# CUTFOX 10 - Cable-cutting tool

1206829

<https://www.phoenixcontact.com/in/products/1206829>



## Approvals



**EAC**

Approval ID: RU x-DE.xx08.B.02974

# CUTFOX 10 - Cable-cutting tool

1206829

<https://www.phoenixcontact.com/in/products/1206829>



## Classifications

### ECLASS

ECLASS-11.0	17130103
ECLASS-12.0	17130103
ECLASS-13.0	17130103

### ETIM

ETIM 8.0	EC002778
----------	----------

### UNSPSC

UNSPSC 21.0	27111500
-------------	----------

# CUTFOX 10 - Cable-cutting tool

1206829

<https://www.phoenixcontact.com/in/products/1206829>



## Environmental Product Compliance

REACH SVHC	Lead 7439-92-1
China RoHS	Environmentally Friendly Use Period = 50 years
	For information on hazardous substances, refer to the manufacturer's declaration available under "Downloads"

# CUTFOX 10 - Cable-cutting tool

1206829

<https://www.phoenixcontact.com/in/products/1206829>



## Accessories

### CUTFOX 10 C-UN - Accessories

1208393

<https://www.phoenixcontact.com/in/products/1208393>

Cable roller for CUTFOX 10



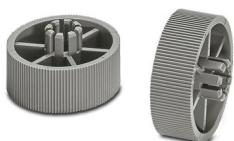
---

### CF-10 WHEEL SET - Replacement part

1207271

<https://www.phoenixcontact.com/in/products/1207271>

2 replacement rolls for CUTFOX 10



# CUTFOX 10 - Cable-cutting tool

1206829

<https://www.phoenixcontact.com/in/products/1206829>



## CF-10 CUTTER KNIFE SET - Spare knife

1207284

<https://www.phoenixcontact.com/in/products/1207284>

Replacement knife, for the CUTFOX 10 cutting machine



---

## CUTFOX 10 R-C - Replacement part

1208403

<https://www.phoenixcontact.com/in/products/1208403>

Replacement rotary table for cable roller



# CUTFOX 10 - Cable-cutting tool

1206829

<https://www.phoenixcontact.com/in/products/1206829>



## CUTFOX 10 BAR - Replacement part

1208416

<https://www.phoenixcontact.com/in/products/1208416>

Replacement holding arm for cable roller



---

## CF-10 ABZH - Accessories

1207297

<https://www.phoenixcontact.com/in/products/1207297>

Accessories for crimping machine





# CUTFOX 10 - Cable-cutting tool

1206829

<https://www.phoenixcontact.com/in/products/1206829>



## CF-10 FUSE 120V SET - Replacement fuse

1207323

<https://www.phoenixcontact.com/in/products/1207323>



Accessories for crimping machine

---

## CF-10 FUSE 250V SET - Replacement fuse

1207310

<https://www.phoenixcontact.com/in/products/1207310>



Accessories for crimping machine

# CUTFOX 10 - Cable-cutting tool



1206829

<https://www.phoenixcontact.com/in/products/1206829>

## CF-10 WHEEL SET PU - Accessories

1200098

<https://www.phoenixcontact.com/in/products/1200098>

2 replacement rolls for CUTFOX 10, with PU tread, for sensitive cables/conductors and their insulation (for hard insulation to some extent)



---

## CF-10 WHEEL SET STEEL - Accessories

1200099

<https://www.phoenixcontact.com/in/products/1200099>

2 replacement rolls for CUTFOX 10 with hardened, finely knurled steel tread, for very hard insulation and materials.



---

Phoenix Contact 2023 © - all rights reserved  
<https://www.phoenixcontact.com>

PHOENIX CONTACT (I) Pvt. Ltd.  
A-58/2, Okhla Industrial Area, Phase - II, New Delhi-110 020

+91.1275.71420  
[info@phoenixcontact.co.in](mailto:info@phoenixcontact.co.in)