

# CARRIER-EMP 22 (27X15) - Marker carriers



0827447

<https://www.phoenixcontact.com/in/products/0827447>

Please be informed that the data shown in this PDF document is generated from our online catalog. Please find the complete data in the user documentation. Our general terms of use for downloads are valid.



Marker carriers, can be used for all buttons and switches with a diameter of 22 mm, black, unlabeled, mounting type: screw, rivet, diameter: 22 mm, lettering field size: 27 x 15 mm

## Your advantages

- Snap-in UC-/US-EMP □... labels are available for marking CARRIER-EMP 22 ... marker carriers
- Can be used for all buttons and switches, diameter: 22 mm

## Commercial data

Item number	0827447
Packing unit	50 pc
Minimum order quantity	50 pc
Sales key	BG2
Product key	BG241A
Catalog page	Page 348 (C-3-2019)
GTIN	4046356446556
Weight per piece (including packing)	1.302 g
Weight per piece (excluding packing)	1.201 g
Customs tariff number	39269097
Country of origin	DE

# CARRIER-EMP 22 (27X15) - Marker carriers



0827447

<https://www.phoenixcontact.com/in/products/0827447>

## Technical data

### Product properties

Product type	Marker carriers
--------------	-----------------

### Data management status

Article revision	03
------------------	----

### Dimensions

Width	29.5 mm
Text field width	27.00 mm
Height	3.2 mm
Text field height	15.00 mm
Length	47 mm
Diameter	22.00 mm

### External dimensions

Outside diameter	= 22 mm
------------------	---------

### Material specifications

Color	black
Material	PA
Flammability rating according to UL 94	V2
Components	free from silicone and halogen

### Environmental and real-life conditions

#### Ambient conditions

Ambient temperature (operation)	-40 °C ... 105 °C
Recommended ambient temperature (storage/transport)	23 °C
Recommended humidity (storage/transport)	50 %

### Mounting

Mounting type	screw, rivet
---------------	--------------

# CARRIER-EMP 22 (27X15) - Marker carriers



0827447

<https://www.phoenixcontact.com/in/products/0827447>

## Classifications

### ECLASS

ECLASS-11.0	27281105
ECLASS-12.0	27281105
ECLASS-13.0	27281105

### ETIM

ETIM 9.0	EC001530
----------	----------

### UNSPSC

UNSPSC 21.0	39121400
-------------	----------

# CARRIER-EMP 22 (27X15) - Marker carriers



0827447

<https://www.phoenixcontact.com/in/products/0827447>

## Environmental product compliance

### EU RoHS

Fulfills EU RoHS substance requirements	Yes, No exemptions
---	--------------------

### EU REACH SVHC

REACH candidate substance (CAS No.)	No substance above 0.1 wt%
-------------------------------------	----------------------------

# CARRIER-EMP 22 (27X15) - Marker carriers



0827447

<https://www.phoenixcontact.com/in/products/0827447>

## Accessories

### UC-EMP (27X15) - Snap-in markers

0825439

<https://www.phoenixcontact.com/in/products/0825439>



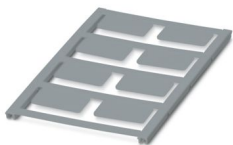
Snap-in markers, Sheet, white, unlabeled, can be labeled with: BLUEMARK ID COLOR, BLUEMARK ID, BLUEMARK CLED, PLOTMARK, CMS-P1-PLOTTER, mounting type: snapped, lettering field size: 27 x 15 mm, Number of individual labels: 8

---

### UC-EMP (27X15) SR - Snap-in markers

0825441

<https://www.phoenixcontact.com/in/products/0825441>



Snap-in markers, Sheet, silver, unlabeled, can be labeled with: BLUEMARK ID COLOR, BLUEMARK ID, BLUEMARK CLED, PLOTMARK, CMS-P1-PLOTTER, mounting type: snapped, lettering field size: 27 x 15 mm, Number of individual labels: 8

# CARRIER-EMP 22 (27X15) - Marker carriers



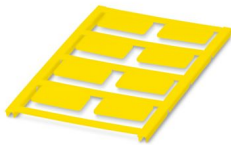
0827447

<https://www.phoenixcontact.com/in/products/0827447>

## UC-EMP (27X15) YE - Snap-in markers

0825440

<https://www.phoenixcontact.com/in/products/0825440>



Snap-in markers, Sheet, yellow, unlabeled, can be labeled with: BLUEMARK ID COLOR, BLUEMARK ID, BLUEMARK CLED, PLOTMARK, CMS-P1-PLOTTER, mounting type: snapped, lettering field size: 27 x 15 mm, Number of individual labels: 8

---

## US-EMP (27X15) - Snap-in markers

0828777

<https://www.phoenixcontact.com/in/products/0828777>



Snap-in markers, Card, white, unlabeled, can be labeled with: BLUEMARK ID COLOR, BLUEMARK ID, THERMOMARK PRIME, THERMOMARK CARD 2.0, THERMOMARK CARD, mounting type: snapped, lettering field size: 27 x 15 mm, Number of individual labels: 27

# CARRIER-EMP 22 (27X15) - Marker carriers



0827447

<https://www.phoenixcontact.com/in/products/0827447>

## US-EMP (27X15) SR - Snap-in markers

0828849

<https://www.phoenixcontact.com/in/products/0828849>



Snap-in markers, Card, silver, unlabeled, can be labeled with: BLUEMARK ID COLOR, BLUEMARK ID, THERMOMARK PRIME, THERMOMARK CARD 2.0, THERMOMARK CARD, mounting type: snapped, lettering field size: 27 x 15 mm, Number of individual labels: 27

---

## US-EMP (27X15) YE - Snap-in markers

0828848

<https://www.phoenixcontact.com/in/products/0828848>



Snap-in markers, Card, yellow, unlabeled, can be labeled with: BLUEMARK ID COLOR, BLUEMARK ID, THERMOMARK PRIME, THERMOMARK CARD 2.0, THERMOMARK CARD, mounting type: snapped, lettering field size: 27 x 15 mm, Number of individual labels: 27

# CARRIER-EMP 22 (27X15) - Marker carriers



0827447

<https://www.phoenixcontact.com/in/products/0827447>

## EMP-AL (27X15) - Equipment marking

0830776

<https://www.phoenixcontact.com/in/products/0830776>

Equipment marking, Aluminum label, aluminum color, unlabeled, can be labeled with: BLUEMARK ID, BLUEMARK ID COLOR, BLUEMARK CLED, mounting type: snapped, lettering field size: 27 x 15 mm, Number of individual labels: 1



---

## LS-EMP-AL (27X15) - Device marker

0831661

<https://www.phoenixcontact.com/in/products/0831661>

Device marker, Aluminum label, aluminum color, unlabeled, can be labeled with: TOPMARK NEO, TOPMARK LASER, mounting type: snapped, lettering field size: 27 x 15 mm, Number of individual labels: 40





# CARRIER-EMP 22 (27X15) - Marker carriers



0827447

<https://www.phoenixcontact.com/in/products/0827447>

## LS-EMP-AL (27X15) BK - Device marker

0831669

<https://www.phoenixcontact.com/in/products/0831669>

Device marker, Aluminum label, black, unlabeled, can be labeled with: TOPMARK NEO, TOPMARK LASER, mounting type: snapped, lettering field size: 27 x 15 mm, Number of individual labels: 40



---

## EMPPR (27X15) - Touch protection

0829535

<https://www.phoenixcontact.com/in/products/0829535>

Touch protection, Sheet, transparent, unlabeled, mounting type: snapped, lettering field size: 27 x 15 mm



---

Phoenix Contact 2024 © - all rights reserved  
<https://www.phoenixcontact.com>

PHOENIX CONTACT (I) Pvt. Ltd.  
A-58/2, Okhla Industrial Area, Phase - II, New Delhi-110 020

+91.1275.71420  
[info@phoenixcontact.co.in](mailto:info@phoenixcontact.co.in)