

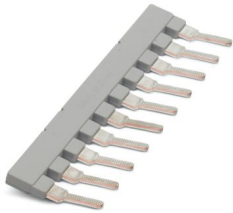
EB 10-15 - Insertion bridge

0205135

<https://www.phoenixcontact.com/in/products/0205135>

Please be informed that the data shown in this PDF document is generated from our online catalog. Please find the complete data in the user documentation. Our general terms of use for downloads are valid.

Insertion bridge, pitch: 15.25 mm, number of positions: 10, color: gray



Commercial data

Item number	0205135
Packing unit	10 pc
Minimum order quantity	10 pc
Sales key	BE1
Product key	BE1Z2X
Catalog page	Page 213 (CL-2005)
GTIN	4017918098285
Weight per piece (including packing)	41.82 g
Weight per piece (excluding packing)	41.82 g
Customs tariff number	85366990
Country of origin	PL

EB 10-15 - Insertion bridge



0205135

<https://www.phoenixcontact.com/in/products/0205135>

Technical data

Product properties

Product type	Insertion bridge
Number of positions	10
Pitch	15.25 mm
Potentials	10

Dimensions

Pitch	15.25 mm
-------	----------

Material specifications

Color	gray
Material	Copper
Insulating material	PA

Mounting

Mounting type	Screw mounting
---------------	----------------

EB 10-15 - Insertion bridge



0205135

<https://www.phoenixcontact.com/in/products/0205135>

Classifications

ECLASS

ECLASS-11.0	27141140
ECLASS-12.0	27141140
ECLASS-13.0	27250303

ETIM

ETIM 9.0	EC000489
----------	----------

UNSPSC

UNSPSC 21.0	39121400
-------------	----------

EB 10-15 - Insertion bridge



0205135

<https://www.phoenixcontact.com/in/products/0205135>

Environmental product compliance

EU RoHS

Fulfills EU RoHS substance requirements	Yes, No exemptions
---	--------------------

China RoHS

Environment friendly use period (EFUP)	EFUP-E
	No hazardous substances above the limits

EU REACH SVHC

REACH candidate substance (CAS No.)	No substance above 0.1 wt%
-------------------------------------	----------------------------

Phoenix Contact 2024 © - all rights reserved
<https://www.phoenixcontact.com>

PHOENIX CONTACT (I) Pvt. Ltd.
A-58/2, Okhla Industrial Area, Phase - II, New Delhi-110 020

+91.1275.71420
info@phoenixcontact.co.in