



R88D-KN75F-ECT

G5 Series servo drive, EtherCAT type, 7.5 kW, 3~ 400 VAC

Specifications

Servo control method	EtherCAT
Drive supply voltage	400 V three phase
Rated output	7.5 kW

Fits to



R88M-K6K010C-BOS2

G5 series AC servo motor, 6 kW, 400 VAC, 1000 rpm, 57.3 Nm, Absolute encoder, with brake, with oil seal



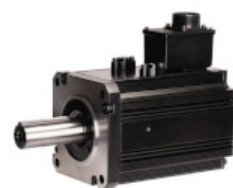
R88M-K6K010C-S2

G5 series AC servo motor, 6 kW, 400 VAC, 1000 rpm, 57.3 Nm, Absolute encoder



R88M-K7K515C-BOS2

G5 series AC servo motor, 7.5 kW, 400 VAC, 1500 rpm, 47.8 Nm, Absolute encoder, with brake, with oil seal



R88M-K7K515C-S2

G5 series AC servo motor, 7.5 kW, 400 VAC, 1500 rpm, 47.8 Nm, Absolute encoder

Accessories

R88A-FIK330-SE

G5 series RFI filter; 30 A, 400 VAC, for 3.0 to 7.5 kW models

CAD Library



Accurax G5 Servomotors/Drives with EtherCAT Control Users Manual

EN PDF 9.89 MB



Accurax-G5 Brochure

EN PDF 6.83 MB



EAC Mark removal Discontinuation Notice

EN PDF 221 KB



G5 Programming Flyer Flyer

EN PDF 415 KB



Omron R88D-KNxxx- ECT(-L) EtherCAT ESI file

EN ZIP 1.95 MB



R88D-K_Accurax G5 rotary drive Datasheet

EN PDF 2.82 MB



Sysmac Catalogue

EN PDF 43.5 MB



Sysmac: A Fully Integrated Platform Brochure

EN PDF 11.8 MB



motor_sizing_tool_v1.80.1.16 Configurator

EN ZIP 36.1 MB