



## R88D-KN150F-ECT

G5 Series servo drive, EtherCAT type, 15 kW, 3~ 400 VAC

# Specifications

Servo control method	EtherCAT
Drive supply voltage	400 V three phase
Rated output	15 kW

## Fits to



### **R88M-K11K015C-BOS2**

G5 series AC servo motor, 11 kW, 400 VAC, 1500 rpm, 70 Nm, Absolute encoder, with brake, with oil seal



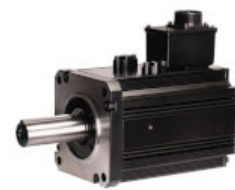
### **R88M-K11K015C-S2**

G5 series AC servo motor, 11 kW, 400 VAC, 1500 rpm, 70 Nm, Absolute encoder



### **R88M-K15K015C-BOS2**

G5 series AC servo motor, 15 kW, 400 VAC, 1500 rpm, 95.9 Nm, Absolute encoder, with brake, with oil seal



### **R88M-K15K015C-S2**

G5 series AC servo motor, 15 kW, 400 VAC, 1500 rpm, 95.9 Nm, Absolute encoder

## CAD Library



### Accurax G5 Servomotors/Drives with EtherCAT Control Users Manual

EN PDF 9.89 MB



### Accurax-G5 Brochure

EN PDF 6.83 MB



### EAC Mark removal Discontinuation Notice

EN PDF 221 KB



### G5 Programming Flyer Flyer

EN PDF 415 KB



### R88D-K\_Accurax G5 rotary drive Datasheet

EN PDF 2.82 MB



### Sysmac Catalogue

EN PDF 43.5 MB



### Sysmac: A Fully Integrated Platform Brochure

EN PDF 11.8 MB



### motor\_sizing\_tool\_v1.80.1.16 Configurator

EN ZIP 36.1 MB