



## CJ1W-OD262

Digital output unit, 64 x transistor outputs, PNP, 0.3 A, 24 VDC, 2 x MIL40 connectors (not included)

# Specifications

I/O system	CJ I/O Bus
Expansion unit type	Basic I/O Unit
Type of module	Digital I/O
Number of digital inputs	0
Digital input type	None
Number of digital outputs	64
Digital output type	PNP
Permitted voltage at output	10.2-26.4 V
Output current	0.3 A
Short-circuit protected outputs	✘
I/O connection type	MIL (plug not included)
Number of I/O connectors	2
Detachable I/O connector	✔
Suitable for safety functions	✘
Number of IOV (V+) terminals	8
Number of IOG (V-) terminals	8
Number of COM terminals	0
Product Height (unpacked)	90 mm
Product Width (unpacked)	31 mm
Product Depth (unpacked)	83.6 mm
Product Weight (unpacked)	110 g

# Accessories



**G70A-ZOC16-4 DC24**

Output Terminal Block for Relay or SSR, 16-point, for PNP output units



**G70V-SOC16P-1**

Relay terminal, PLC Output, 16 channels, PNP, Push-in terminals



**P2RV-4-100C**

G2RV interface cable for use between CJ1W-OD232/OD262 and 4 P2RV-8-O-F modules, 1 m



**P2RV-4-200C**

G2RV interface cable for use between CJ1W-OD232/OD262 and 4 P2RV-8-O-F modules, 2 m



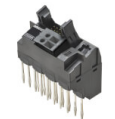
**P2RV-4-300C**

G2RV interface cable for use between CJ1W-OD232/OD262 and 4 P2RV-8-O-F modules, 3 m



**P2RVC-8ST-O-5-1**

Interface unit for G2RV-SR/G3RV-ST Push-in, PLC Output, 8 channels, PNP, 30 VAC/DC, Total 2 A, Push-in



**P2RVC-8ST-O-7-1**

Interface unit for G2RV-SR/G3RV-ST Screw, PLC Output, 8 channels, PNP, 30 VAC/DC, Total 2 A, Rising-up screw



**XW2D-40G6**

General-purpose I/O terminal block, MIL40 socket, M3 captive screws, 40 points



**XW2K-40G-O32C**

PLC interface wiring system with push-in plus technology and power supply terminal, 40 points MIL connector, Input/Output, 0.5 A, NPN/PNP, 30 VDC, DIN rail horizontal and vertical mounting



**XW2Z-0030FF-L**

I/O connection cable, unshielded, MIL40 to MIL40, 0.3 m



**XW2Z-0050FF-L**

I/O connection cable, unshielded, MIL40 to MIL40, 0.5 m



**XW2Z-0100FF-L**

I/O connection cable, unshielded, MIL40 to MIL40, 1 m



**XW2Z-0100FH-L02**

I/O connection cable, unshielded, MIL40 to 2 x MIL20, 1 m



**XW2Z-0100FN-L**

I/O connection cable, unshielded, MIL40 to open ends, 1 m



**XW2Z-0150FF-L**

I/O connection cable, unshielded, MIL40 to MIL40, 1.5 m



**XW2Z-0150FN-L**

I/O connection cable, unshielded, MIL40 to open ends, 1.5 m



**XW2Z-0200FF-L**

I/O connection cable, unshielded, MIL40 to MIL40, 2 m



**XW2Z-0200FH-L02**

I/O connection cable, unshielded, MIL40 to 2 x MIL20, 2 m



**XW2Z-0200FN-L**

I/O connection cable, unshielded, MIL40 to open ends, 2 m



**XW2Z-0300FF-L**

I/O connection cable, unshielded, MIL40 to MIL40, 3 m



**XW2Z-0300FH-L02**

I/O connection cable, unshielded, MIL40 to 2 x MIL20, 3 m



**XW2Z-0300FN-L**

I/O connection cable, unshielded, MIL40 to open ends, 3 m



**XW2Z-0500FF-L**

I/O connection cable, unshielded, MIL40 to MIL40, 5 m



**XW2Z-0500FN-L**

I/O connection cable, unshielded, MIL40 to open ends, 5 m



**XW2Z-100K**

I/O connection cable, MIL40 to MIL40, 1 m



**XW2Z-150K**

I/O connection cable, MIL40 to MIL40, 1.5 m



**XW2Z-200K**

I/O connection cable, MIL40 to MIL40, 2 m



XW2Z-300K

I/O connection cable, MIL40 to MIL40, 3 m



XW2Z-500K

I/O connection cable, MIL40 to MIL40, 5 m



XW2Z-C50K

I/O connection cable, MIL40 to MIL40, 0.5 m



XW2Z-RO100-75-D1

I/O connection cable, with shield connection, MIL40 to 2 x MIL20 for G70V-ZOC16-3, 1 m



XW2Z-RO200-175-D1

I/O connection cable, with shield connection, MIL40 to 2 x MIL20 for G70V-ZOC16-3, 2.0 m and 1.75 m



XW2Z-RO75-50-D1

I/O connection cable, with shield connection, MIL40 to 2 x MIL20 for G70V-ZOC16-3, 0.75 m

## Downloads

### CAD Library



#### CJ1W-OC/OA/OD Datasheet

EN PDF 3.88 MB



#### CJ2 CPU Units Hardware Users Manual

EN PDF 8.4 MB



#### CJ2-Series Programmable Controller Datasheet

EN PDF 17.3 MB



#### EAC Mark removal Discontinuation Notice

EN PDF 221 KB

