

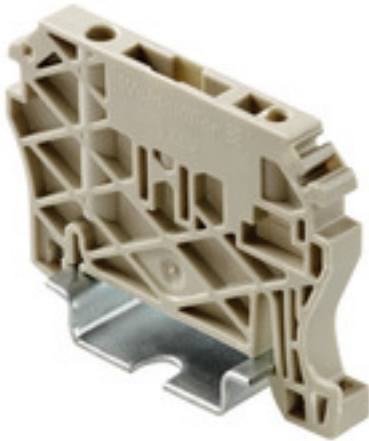
ZEW 35**Weidmüller Interface GmbH & Co. KG**

Klingenbergstraße 26

D-32758 Detmold

Germany

www.weidmueller.com

Product image

Weidmüller's range of products includes end brackets that guarantee a permanent, reliable mounting on the terminal rail and prevent sliding. Versions with and without screws are available. The end brackets include marking options, also for group markers, and also a test plug holder.

General ordering data

Version	End bracket, dark beige, TS 35, V-2, Wemid, Width: 6 mm, 100 °C
Order No.	9540000000
Type	ZEW 35
GTIN (EAN)	4008190956264
Qty.	20 pc(s).

ZEW 35**Weidmüller Interface GmbH & Co. KG**

Klingenbergstraße 26

D-32758 Detmold

Germany

www.weidmueller.com

Technical data**Dimensions and weights**

Depth	40 mm	Depth (inches)	1.575 inch
Height	55 mm	Height (inches)	2.165 inch
Width	6 mm	Width (inches)	0.236 inch
Net weight	6.688 g		

Temperatures

Continuous operating temp., min.	-50 °C	Continuous operating temp., max.	100 °C
----------------------------------	--------	----------------------------------	--------

Material data

Material	Wemid	Colour	dark beige
UL 94 flammability rating	V-2		

System specifications

Version	For the terminals	Rail	TS 35
---------	-------------------	------	-------

Additional technical data

Installation advice	Direct mounting	Interlock	screwless
Type of mounting	Snap-on		

Dimensions

TS 35 offset	41 mm
--------------	-------

General

Installation advice	Direct mounting	Rail	TS 35
---------------------	-----------------	------	-------

Classifications

ETIM 6.0	EC001041	ETIM 7.0	EC001041
ETIM 8.0	EC001041	ETIM 9.0	EC001041
ECLASS 9.0	27-14-11-35	ECLASS 9.1	27-14-11-35
ECLASS 10.0	27-14-11-35	ECLASS 11.0	27-14-11-35
ECLASS 12.0	27-14-11-35	ECLASS 13.0	27-25-03-02

Environmental Product Compliance

REACH SVHC	/
RoHS Compliance Status	Compliant without exemption

Approvals

ROHS	Conform
------	---------

Data sheet**ZEW 35**

Weidmüller Interface GmbH & Co. KG
Klingenbergstraße 26
D-32758 Detmold
Germany

www.weidmueller.com

Technical data**Downloads**

Engineering Data	CAD data – STEP
Engineering Data	Zuken E3.S
Product Change Notification	20210823 Technical Change ZEW 15, ZEW 35
User Documentation	StorageConditionsTerminalBlocks
Catalogues	Catalogues in PDF-format
Brochures	