

SDG01.1110

- Head positioned to the front
- Metal enclosure
- 50 mm x 152 mm x 43 mm
- Long life

Data

Ordering data

Product type description	SDG01.1110
Article number (order number)	101009673
EAN (European Article Number)	4030661612508
eCl@ss number, version 12.0	27-27-26-02
eCl@ss number, version 11.0	27-27-26-02
eCl@ss number, version 9.0	27-27-26-02
ETIM number, version 7.0	EC002592
ETIM number, version 6.0	EC002592

Approvals - Standards

Certificates	cULus
--------------	-------

General data

Standards	BG-GS-ET-15 EN ISO 14119 EN IEC 60947-5-1
Housing material	Aluminium
Housing coating material	painted

Gross weight 424 g

General data - Features

Number of safety contacts 3

Safety classification

Standards EN ISO 13849-1

Mission time 20 Year(s)

Safety classification - Safety outputs

B_{10D} Normally-closed contact (NC) 2,000,000 Operations

B_{10D} Normally open contact (NO) 1,000,000 Operations

Mechanical data

Mechanical life, minimum 1,000,000 Operations

Positive break travel 11 mm

Positive break force, minimum 5 N

Note (Positive break force) per NC

Mechanical data - Connection technique

Termination Screw terminals M20 x 1.5

Cable section, minimum 0.5 mm²

Cable section, maximum 2.5 mm²

Note (Cable section) All indications including the conductor ferrules.

Mechanical data - Dimensions

Length of sensor 43 mm

Width of sensor 50 mm

Height of sensor 152 mm

Ambient conditions

Degree of protection IP67
Ambient temperature -25 ... +70 °C

Ambient conditions - Insulation values

Rated insulation voltage U_i 400 V
Rated impulse withstand voltage U_{imp} 2.5 kV

Electrical data

Thermal test current 10 A
Utilisation category AC-15 230 VAC
Utilisation category AC-15 8 A
Utilisation category DC-13 24 VDC
Utilisation category DC-13 5 A
Switching element Opener (NC)
Switching principle Slow action
Material of the contacts, electrical Silver

Scope of delivery

Scope of delivery Actuator must be ordered separately.

Ordering code

Product type description:
SDG(1)/(2)

(1)

01 Head positioned to the front
02 Head positioned to the left

03	Head positioned to the right
04	Head positioned to the rear
(2)	
1103	2 NC contact / 1 NO contact slow action switching contact
3330	3 NC contacts slow action switching contact
3440	3 NC contacts gradually slow action switching contact
1044	1 NC contact / 2 NO contacts slow action switching contact

Pictures

Product picture (catalogue individual photo)



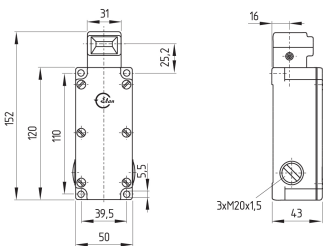
ID: ksdg-f01

| 1.2 MB | .jpg | 333.375 x 757.767 mm - 945 x 2148 px - 72 dpi

| 88.6 kB | .png | 74.083 x 168.275 mm - 210 x 477 px - 72 dpi

| 31.5 kB | .jpg | 54.328 x 123.472 mm - 154 x 350 px - 72 dpi

Dimensional drawing basic component



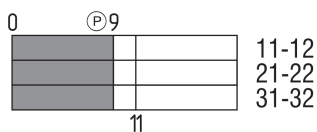
ID: kshg-g03

| 31.9 kB | .cdr |

| 4.1 kB | .png | 74.083 x 55.033 mm - 210 x 156 px - 72 dpi

| 113.7 kB | .jpg | 352.778 x 262.114 mm - 1000 x 743 px - 72 dpi

Switch travel diagram



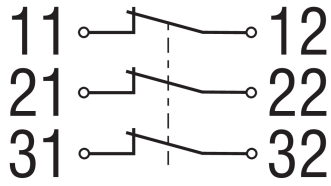
ID: kshg-s04

| 20.3 kB | .cdr |

| 1.8 kB | .png | 74.083 x 28.222 mm - 210 x 80 px - 72 dpi

| 49.9 kB | .jpg | 352.778 x 134.761 mm - 1000 x 382 px - 72 dpi

Diagram



ID: kshg-k04

| 17.7 kB | .cdr |

| 82.3 kB | .jpg | 352.778 x 191.558 mm - 1000 x 543 px - 72 dpi

| 3.3 kB | .png | 74.083 x 40.217 mm - 210 x 114 px - 72 dpi

Schmersal India Pvt. Ltd., Plot No - G-7/1, Ranjangaon MIDC, Tal. - Shirur, Dist.- Pune 412 220

The details and data referred to have been carefully checked. Images may diverge from original. Further technical data can be found in the manual. Technical amendments and errors possible.

Generated on: 08/12/2023, 8:56 am