

## SDG01.1103

- Head positioned to the front
- Metal enclosure
- 50 mm x 152 mm x 43 mm
- Long life

## Data

### Ordering data

Product type description	SDG01.1103
Article number (order number)	101016704
EAN (European Article Number)	4030661611563
eCl@ss number, version 12.0	27-27-26-02
eCl@ss number, version 11.0	27-27-26-02
eCl@ss number, version 9.0	27-27-26-02
ETIM number, version 7.0	EC002592
ETIM number, version 6.0	EC002592

### Approvals - Standards

Certificates	cULus
--------------	-------

### General data

Standards	BG-GS-ET-15 EN ISO 14119 EN IEC 60947-5-1
Housing material	Aluminium
Housing coating material	painted

Gross weight 426 g

### General data - Features

Number of auxiliary contacts 1

Number of safety contacts 2

### Safety classification

Standards EN ISO 13849-1

Mission time 20 Year(s)

### Safety classification - Safety outputs

B<sub>10D</sub> Normally-closed contact (NC) 2,000,000 Operations

B<sub>10D</sub> Normally open contact (NO) 1,000,000 Operations

### Mechanical data

Mechanical life, minimum 1,000,000 Operations

Positive break travel 11 mm

Positive break force, minimum 5 N

Note (Positive break force) per NC

### Mechanical data - Connection technique

Termination Screw terminals M20 x 1.5

Cable section, minimum 0.5 mm<sup>2</sup>

Cable section, maximum 2.5 mm<sup>2</sup>

Note (Cable section) All indications including the conductor ferrules.

### Mechanical data - Dimensions

Length of sensor 43 mm

Width of sensor	50 mm
Height of sensor	152 mm

### Ambient conditions

Degree of protection	IP67
Ambient temperature	-25 ... +70 °C

### Ambient conditions - Insulation values

Rated insulation voltage $U_i$	400 V
Rated impulse withstand voltage $U_{imp}$	2.5 kV

### Electrical data

Thermal test current	10 A
Utilisation category AC-15	230 VAC
Utilisation category AC-15	8 A
Utilisation category DC-13	24 VDC
Utilisation category DC-13	5 A
Switching element	NO contact, NC contact
Switching principle	Slow action
Material of the contacts, electrical	Silver

### Scope of delivery

Scope of delivery	Actuator must be ordered separately.
-------------------	--------------------------------------

### Ordering code

Product type description:  
SDG(1)/(2)

(1)

---

**01** Head positioned to the front

<b>02</b>	Head positioned to the left
<b>03</b>	Head positioned to the right
<b>04</b>	Head positioned to the rear
(2)	
<b>1103</b>	2 NC contact / 1 NO contact slow action switching contact
<b>3330</b>	3 NC contacts slow action switching contact
<b>3440</b>	3 NC contacts gradually slow action switching contact
<b>1044</b>	1 NC contact / 2 NO contacts slow action switching contact

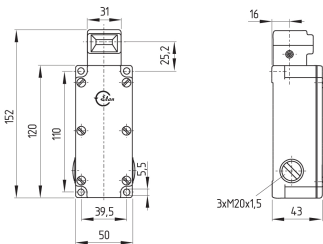
## Pictures

### Product picture (catalogue individual photo)



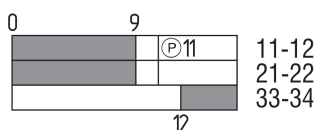
ID: ksdg-f01  
 | 1.2 MB | .jpg | 333.375 x 757.767 mm - 945 x 2148 px - 72 dpi  
 | 88.6 kB | .png | 74.083 x 168.275 mm - 210 x 477 px - 72 dpi  
 | 31.5 kB | .jpg | 54.328 x 123.472 mm - 154 x 350 px - 72 dpi

### Dimensional drawing basic component



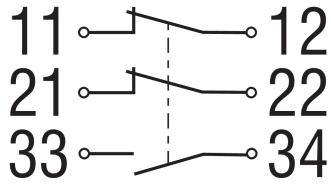
ID: kshg-g03  
 | 31.9 kB | .cdr |  
 | 4.1 kB | .png | 74.083 x 55.033 mm - 210 x 156 px - 72 dpi  
 | 113.7 kB | .jpg | 352.778 x 262.114 mm - 1000 x 743 px - 72 dpi

### Switch travel diagram



ID: kshg-s03  
 | 20.2 kB | .cdr |  
 | 1.9 kB | .png | 74.083 x 27.517 mm - 210 x 78 px - 72 dpi  
 | 48.6 kB | .jpg | 352.778 x 131.586 mm - 1000 x 373 px - 72 dpi

## Diagram



ID: ktzg-k02

| 84.7 kB | .jpg | 352.778 x 191.558 mm - 1000 x 543 px - 72 dpi

| 3.4 kB | .png | 74.083 x 40.217 mm - 210 x 114 px - 72 dpi

Schmersal India Pvt. Ltd., Plot No - G-7/1, Ranjangaon MIDC, Tal. - Shirur, Dist.- Pune 412 220

The details and data referred to have been carefully checked. Images may diverge from original. Further technical data can be found in the manual. Technical amendments and errors possible.

Generated on: 08/12/2023, 8:55 am