



SCG01.92

- Head positioned to the front
- Metal enclosure
- 50 mm x 120 mm x 43 mm
- Long life

Data

Ordering data

Product type description	SCG01.92
Article number (order number)	101020904
EAN (European Article Number)	4030661610245
eCl@ss number, version 12.0	27-27-26-02
eCl@ss number, version 11.0	27-27-26-02
eCl@ss number, version 9.0	27-27-26-02
ETIM number, version 7.0	EC002592
ETIM number, version 6.0	EC002592

Approvals - Standards

Certificates	cULus
--------------	-------

General data

Standards	BG-GS-ET-15 EN ISO 14119 EN IEC 60947-5-1
Housing material	Aluminium
Housing coating material	painted

Gross weight 344 g

General data - Features

Number of auxiliary contacts 1

Number of safety contacts 1

Safety classification

Standards EN ISO 13849-1

Mission time 20 Year(s)

Safety classification - Safety outputs

B_{10D} Normally-closed contact (NC) 2,000,000 Operations

B_{10D} Normally open contact (NO) 1,000,000 Operations

Mechanical data

Mechanical life, minimum 1,000,000 Operations

Positive break travel 17.5 mm

Positive break force, minimum 5 N

Note (Positive break force) per NC

Mechanical data - Connection technique

Termination Screw terminals M20 x 1.5

Cable section, minimum 0.5 mm²

Cable section, maximum 2.5 mm²

Note (Cable section) All indications including the conductor ferrules.

Mechanical data - Dimensions

Length of sensor 43 mm

Width of sensor	50 mm
Height of sensor	120 mm

Ambient conditions

Degree of protection	IP67
Ambient temperature	-25 ... +70 °C

Ambient conditions - Insulation values

Rated insulation voltage U_i	400 V
Rated impulse withstand voltage U_{imp}	2.5 kV

Electrical data

Thermal test current	10 A
Utilisation category AC-15	230 VAC
Utilisation category AC-15	6 A
Utilisation category DC-13	24 VDC
Utilisation category DC-13	4 A
Switching element	NO contact, NC contact
Switching principle	Snap action
Material of the contacts, electrical	Silver

Scope of delivery

Scope of delivery	Actuator must be ordered separately.
-------------------	--------------------------------------

Ordering code

Product type description:
SCG(1)/(2)

(1)

01 Head positioned to the front

02	Head positioned to the left
03	Head positioned to the right
04	Head positioned to the rear
<hr/>	
(2)	
103	1 NC contact / 1 NO contact slow action switching contact
220	2 NC contacts slow action switching contact
92	1 NC contact / 1 NO contact snap switching element

Pictures

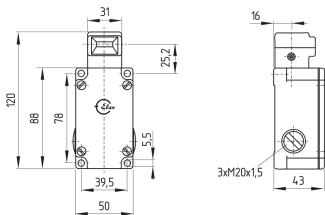
Product picture (catalogue individual photo)



ID: kscg-f01

| 89.7 kB | .png | 74.083 x 144.286 mm - 210 x 409 px - 72 dpi
 | 1.0 MB | .jpg | 320.675 x 625.122 mm - 909 x 1772 px - 72 dpi
 | 45.8 kB | .jpg | 63.5 x 123.472 mm - 180 x 350 px - 72 dpi

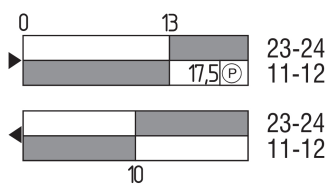
Dimensional drawing basic component



ID: kshg-g02

| 31.0 kB | .cdr |
 | 4.0 kB | .png | 74.083 x 48.331 mm - 210 x 137 px - 72 dpi
 | 108.9 kB | .jpg | 352.778 x 229.306 mm - 1000 x 650 px - 72 dpi

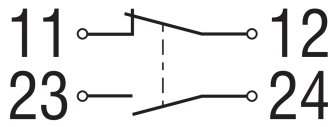
Switch travel diagram



ID: kshg-s01

| 20.9 kB | .cdr |
 | 2.2 kB | .png | 74.083 x 39.158 mm - 210 x 111 px - 72 dpi
 | 66.7 kB | .jpg | 352.778 x 187.325 mm - 1000 x 531 px - 72 dpi

Diagram



ID: ktzg-k01

| 53.1 kB | .jpg | 352.778 x 128.058 mm - 1000 x 363 px - 72 dpi

| 2.7 kB | .png | 74.083 x 26.811 mm - 210 x 76 px - 72 dpi

Schmersal India Pvt. Ltd., Plot No - G-7/1, Ranjangaon MIDC, Tal. - Shirur, Dist.- Pune 412 220

The details and data referred to have been carefully checked. Images may diverge from original. Further technical data can be found in the manual. Technical amendments and errors possible.

Generated on: 08/12/2023, 8:53 am