



## AZM 170SK-11/02-ZRI-B6R-2197 24VAC/DC

- Manual release
- 1 Cable entry M 20 x 1.5
- Screw connection
- Double-insulated
- Individual coding
- Coding level "High" according to ISO 14119
- 90 mm x 84 mm x 30 mm
- Compact design
- Interlock with protection against incorrect locking.
- Long life
- High holding force
- right-hand model
- For very small actuating radii in line with or at 90° to the plane of the actuator

## Data

### Ordering data

Product type description	AZM 170SK-11/02-ZRI-B6R-2197 24VAC/DC
Article number (order number)	103025182
EAN (European Article Number)	4030661512402
eCl@ss number, version 12.0	27-27-26-03
eCl@ss number, version 11.0	27-27-26-03
eCl@ss number, version 9.0	27-27-26-03
ETIM number, version 7.0	EC002593
ETIM number, version 6.0	EC002593

### Approvals - Standards

Certificates	BG cULus CCC
--------------	--------------------

## General data

Standards	BG-GS-ET-19 EN ISO 13849-1 EN ISO 14119 EN IEC 60947-5-1
Coding	Individual coding
Coding level according to EN ISO 14119	High
Working principle	electromechanical
Housing material	Plastic, glass-fibre reinforced thermoplastic, self-extinguishing
Material of the actuator	Stainless steel
Gross weight	389 g

## General data - Features

Power to unlock	Yes
Manual release	Yes
Number of actuating directions	2
Number of safety contacts	2

## Safety classification

Standards	EN ISO 13849-1
Performance Level, up to	d
Category	3
Mission time	20 Year(s)

## Safety classification - Safety outputs

B <sub>10D</sub> Normally-closed contact (NC)	2,000,000 Operations
---	----------------------

### Safety classification - Fault exclusion

Mission time 20 Year(s)

### Mechanical data

Actuating radius, minimum 50 mm

Mechanical life, minimum 1,000,000 Operations

Holding force  $F_{Zh}$  in accordance with EN ISO 14119 1,000 N

Holding force  $F_{max}$ , maximum 1,300 N

Latching force 30 N

Positive break travel 11 mm

Positive break force per NC contact, minimum 8.5 N

Positive break force, minimum 17 N

Actuating speed, maximum 2 m/s

Mounting Screws

Type of the fixing screws 2x M5

### Mechanical data - Connection technique

Cable entry M 16 x 1.5

Termination Screw terminals

Cable section, minimum 0.25 mm<sup>2</sup>

Cable section, maximum 1.5 mm<sup>2</sup>

Allowed type of cable solid single-wire  
solid multi-wire  
flexible

### Mechanical data - Dimensions

Length of sensor 30 mm

Width of sensor 90 mm

Height of sensor 84 mm

### Ambient conditions

Degree of protection IP67  
Ambient temperature -25 ... +60 °C  
Storage and transport temperature, minimum -25 °C  
Storage and transport temperature, maximum +85 °C  
Protection class II

### Ambient conditions - Insulation values

Rated insulation voltage  $U_i$  250 VAC  
Rated impulse withstand voltage  $U_{imp}$  4 kV  
Overvoltage category III  
Degree of pollution 3

### Electrical data

Thermal test current 6 A  
Rated control voltage 24 VAC/DC  
Required rated short-circuit current 1,000 A  
Electrical power consumption, maximum 10 W  
Switching element Opener (NC)  
Note (Switching element) Change-over contact with double break, type Zb or 2 NC or 3 NC or 4 NC contacts, with galvanically separated contact bridges  
Switching principle slow action, positive break NC contact  
Switching frequency 1,000 /h  
Material of the contacts, electrical Silver

### Electrical data - Magnet control

Magnet switch-on time	100 %
Test pulse duration, maximum	5 ms
Test pulse interval, minimum	50 ms

### Electrical data - Safety contacts

Voltage, Utilisation category AC-15	230 VAC
Voltage, Utilisation category DC-13	24 VDC

### Electrical data - Auxiliary contacts

Voltage, Utilisation category AC-15	230 VAC
Current, Utilisation category AC-15	4 A
Voltage, Utilisation category DC-13	24 VDC
Current, Utilisation category DC-13	2.5 A

### Other data

Note (applications)	sliding safety guard removable guard hinged safety guard
---------------------	--

### Scope of delivery

Scope of delivery	Not available as spare part Slot sealing plugs The actuator is included in the scope of delivery
-------------------	--

### Note

Note (General)	The actuator is not available separately.
----------------	---

Note (Manual release)

right

bottom

For manual release using M5 triangular key, available as accessory

Additional manual release on side

## Ordering code

Product type description:

AZM 170(1)-(2)Z(3)I(4)-(5)-(6)-(7) (8)

(1)

**without**

Cut clamps

**SK**

Screw connection

(2)

**11**

1 NO contacts/1 NC contact

**02**

2 NC contact

(3)

**without**

Latching force 5 N

**R**

Latching force 30 N

**I**

Individual coding

(4)

**without**

Power to unlock

**A**

Power to lock

(5)

**without**

cable gland

**ST**

M12 x 1 connector

(6)

**B1**

with actuator B1

**B5**

with actuator B5

**B6L**

with actuator B6L

**B6R**

with actuator B6R

(7)

---

<b>without</b>	Manual release
<b>2197</b>	Manual release from side (Standard in case of connector and power to unlock versions)
<b>1637</b>	Gold-plated contacts

(8)

---

<b>24VAC/DC</b>	Us 24 VAC/DC
<b>110VAC</b>	Us 110 VAC
<b>230VAC</b>	Us 230 VAC

(1)

---

<b>11/11</b>	1 NO contact, 1 NC contact / 1 NO contact 1, NC contact
<b>11/02</b>	1 NO contact, 1 NC contact / 2 NC contacts
<b>12/00</b>	1 NO contact, 2 NC contacts / -
<b>12/11</b>	1 NO contact, 2 NC contact / 1 NO contact 1, NC contact
<b>12/02</b>	1 NO contact, 2 NC contact / 2 NC contacts
<b>02/01</b>	2 NC contacts / 1 NC contact
<b>02/10</b>	2 NC contacts, - / 1 NO contact

(2)

---

<b>without</b>	Latching force 5 N
<b>R</b>	Latching force 30 N

(3)

---

<b>without</b>	Power to unlock
<b>A</b>	Power to lock

(4)

---

<b>B1</b>	with actuator B1
<b>B5</b>	with actuator B5
<b>B6L</b>	with actuator B6L
<b>B6R</b>	with actuator B6R

(5)

1637

Gold-plated contacts

(6)

2197

Manual release for Power to unlock

## Pictures

### Product picture (catalogue individual photo)



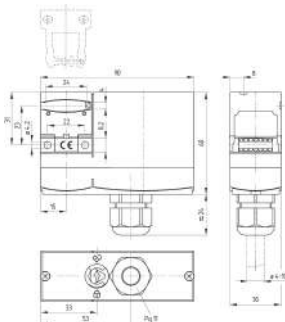
ID: kazm1fi3

| 595.8 kB | .jpg | 262.114 x 331.258 mm - 743 x 939 px - 72 dpi

| 49.6 kB | .png | 74.083 x 93.486 mm - 210 x 265 px - 72 dpi

| 54.5 kB | .jpg | 97.719 x 123.472 mm - 277 x 350 px - 72 dpi

### Dimensional drawing basic component



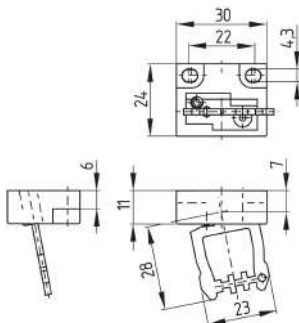
ID: kazm1gi3

| 106.0 kB | .cdr |

| 6.2 kB | .png | 74.083 x 83.961 mm - 210 x 238 px - 72 dpi

| 195.9 kB | .jpg | 352.778 x 400.403 mm - 1000 x 1135 px - 72 dpi

### Dimensional drawing actuator



ID: 1az17b02

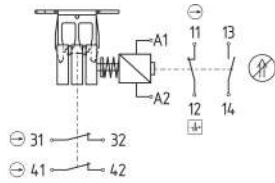
| 41.2 kB | .cdr |

| 148.6 kB | .jpg | 352.425 x 383.469 mm - 999 x 1087 px - 72 dpi

| 18.2 kB | .png | 74.083 x 80.433 mm - 210 x 228 px - 72 dpi



## Diagram

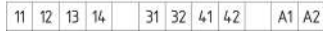


ID: kazm1k69

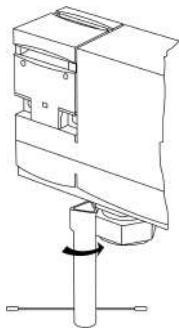
| 79.3 kB | .ai | 210.002 x 297 mm - 595 x 841 px - 72 dpi

| 100.5 kB | .jpg | 352.778 x 264.583 mm - 1000 x 750 px - 72 dpi

| 4.7 kB | .png | 74.083 x 55.739 mm - 210 x 158 px - 72 dpi



## Operating principle

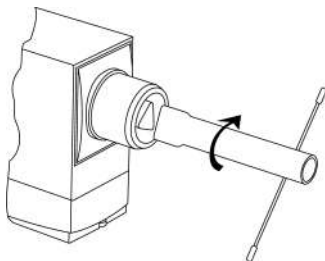


ID: kazm1a70

| 213.5 kB | .jpg | 352.778 x 656.519 mm - 1000 x 1861 px - 72 dpi

| 6.5 kB | .png | 74.083 x 137.583 mm - 210 x 390 px - 72 dpi

## Operating principle



ID: kazm1a71

| 113.1 kB | .jpg | 352.778 x 280.811 mm - 1000 x 796 px - 72 dpi

| 4.6 kB | .png | 74.083 x 58.914 mm - 210 x 167 px - 72 dpi

## Assembly example



ID: kazm1m06

| 98.4 kB | .cdr |

Schmersal India Pvt. Ltd., Plot No - G-7/1, Ranjangaon MIDC, Tal. - Shirur, Dist.- Pune 412 220

The details and data referred to have been carefully checked. Images may diverge from original. Further technical data can be found in the manual. Technical amendments and errors possible.

Generated on: 11/12/2023, 7:02 am