



AZM 170-11ZRIA-B6R 24VAC/DC

- 1 Cable entry M 20 x 1.5
- IDC method of termination
- Manual release
- Double-insulated
- Individual coding
- Coding level "High" according to ISO 14119
- 90 mm x 84 mm x 30 mm
- Compact design
- Interlock with protection against incorrect locking.
- Long life
- High holding force
- right-hand model
- For very small actuating radii in line with or at 90° to the plane of the actuator

Data

Ordering data

Product type description	AZM 170-11ZRIA-B6R 24VAC/DC
Article number (order number)	101140807
EAN (European Article Number)	4030661433530
eCl@ss number, version 12.0	27-27-26-03
eCl@ss number, version 11.0	27-27-26-03
eCl@ss number, version 9.0	27-27-26-03
ETIM number, version 7.0	EC002593
ETIM number, version 6.0	EC002593

Approvals - Standards

Certificates	BG cULus CCC
--------------	--------------------

General data

Standards	BG-GS-ET-19 EN ISO 13849-1 EN ISO 14119 EN IEC 60947-5-1
Coding	Individual coding
Coding level according to EN ISO 14119	High
Working principle	electromechanical
Housing material	Plastic, glass-fibre reinforced thermoplastic, self-extinguishing
Material of the actuator	Stainless steel
Gross weight	315 g

General data - Features

Power to lock	Yes
Manual release	Yes
Number of actuating directions	2
Number of auxiliary contacts	1
Number of safety contacts	1

Safety classification

Standards	EN ISO 13849-1
Performance Level, up to	d
Category	3
Mission time	20 Year(s)

Safety classification - Safety outputs

B _{10D} Normally-closed contact (NC)	2,000,000 Operations
---	----------------------

Safety classification - Fault exclusion

Mission time	20 Year(s)
--------------	------------

Mechanical data

Actuating radius, minimum	50 mm
Mechanical life, minimum	1,000,000 Operations
Holding force F_{Zh} in accordance with EN ISO 14119	1,000 N
Holding force F_{max} , maximum	1,300 N
Latching force	30 N
Positive break travel	11 mm
Positive break force per NC contact, minimum	8.5 N
Positive break force, minimum	8.5 N
Actuating speed, maximum	2 m/s
Mounting	Screws
Type of the fixing screws	2x M5

Mechanical data - Connection technique

Cable entry	M 16 x 1.5
Termination	IDC method of termination
Cable section, minimum	0.75 mm ²
Cable section, maximum	1 mm ²
Allowed type of cable	flexible

Mechanical data - Dimensions

Length of sensor	30 mm
Width of sensor	90 mm
Height of sensor	84 mm

Ambient conditions

Degree of protection	IP67
Ambient temperature	-25 ... +60 °C
Storage and transport temperature, minimum	-25 °C
Storage and transport temperature, maximum	+85 °C
Protection class	II

Ambient conditions - Insulation values

Rated insulation voltage U_i	250 VAC
Rated impulse withstand voltage U_{imp}	4 kV
Overvoltage category	III
Degree of pollution	3

Electrical data

Thermal test current	6 A
Rated control voltage	24 VAC/DC
Required rated short-circuit current	1,000 A
Electrical power consumption, maximum	10 W
Switching element	NO contact, NC contact
Note (Switching element)	Change-over contact with double break, type Zb or 2 NC or 3 NC or 4 NC contacts, with galvanically separated contact bridges
Switching principle	slow action, positive break NC contact
Switching frequency	1,000 /h
Material of the contacts, electrical	Silver

Electrical data - Magnet control

Magnet switch-on time	100 %
-----------------------	-------

Test pulse duration, maximum	5 ms
Test pulse interval, minimum	50 ms

Electrical data - Safety contacts

Voltage, Utilisation category AC-15	230 VAC
Current, Utilisation category AC-15	4 A
Voltage, Utilisation category DC-13	24 VDC
Current, Utilisation category DC-13	4 A

Electrical data - Auxiliary contacts

Voltage, Utilisation category AC-15	230 VAC
Current, Utilisation category AC-15	4 A
Voltage, Utilisation category DC-13	24 VDC
Current, Utilisation category DC-13	4 A

Other data

Note (applications)	sliding safety guard removable guard hinged safety guard
---------------------	--

Scope of delivery

Scope of delivery	Not available as spare part Slot sealing plugs The actuator is included in the scope of delivery
-------------------	--

Note

Note (General)	This type termination (IDC) method enables simple connection of flexible conductors without the need for the use of conductor ferrules The actuator is not available separately.
Note (Manual release)	bottom For manual release using M5 triangular key, available as accessory

Ordering code

Product type description:
AZM 170(1)-(2)Z(3)I(4)-(5)-(6)-(7) (8)

(1)		
without		Cut clamps
SK		Screw connection
(2)		
11		1 NO contacts/1 NC contact
02		2 NC contact
(3)		
without		Latching force 5 N
R		Latching force 30 N
I		Individual coding
(4)		
without		Power to unlock
A		Power to lock
(5)		
without		cable gland
ST		M12 x 1 connector
(6)		
B1		with actuator B1
B5		with actuator B5
B6L		with actuator B6L

B6R with actuator B6R

(7)

without Manual release
2197 Manual release from side (Standard in case of conector and power to unlock versions)
1637 Gold-plated contacts

(8)

24VAC/DC Us 24 VAC/DC
110VAC Us 110 VAC
230VAC Us 230 VAC

(1)

11/11 1 NO contact, 1 NC contact / 1 NO contact 1, NC contact
11/02 1 NO contact, 1 NC contact / 2 NC contacts
12/00 1 NO contact, 2 NC contacts / -
12/11 1 NO contact, 2 NC contact / 1 NO contact 1, NC contact
12/02 1 NO contact, 2 NC contact / 2 NC contacts
02/01 2 NC contacts / 1 NC contact
02/10 2 NC contacts, - / 1 NO contact

(2)

without Latching force 5 N
R Latching force 30 N

(3)

without Power to unlock
A Power to lock

(4)

B1 with actuator B1
B5 with actuator B5

B6L with actuator B6L

B6R with actuator B6R

(5)

1637 Gold-plated contacts

(6)

2197 Manual release for Power to unlock

Pictures

Product picture (catalogue individual photo)



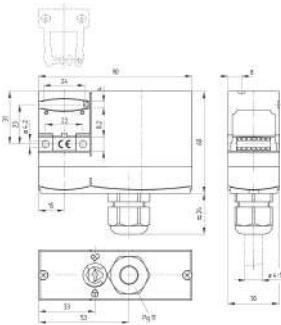
ID: kazm1fi3

| 595.8 kB | .jpg | 262.114 x 331.258 mm - 743 x 939 px - 72 dpi

| 49.6 kB | .png | 74.083 x 93.486 mm - 210 x 265 px - 72 dpi

| 54.5 kB | .jpg | 97.719 x 123.472 mm - 277 x 350 px - 72 dpi

Dimensional drawing basic component



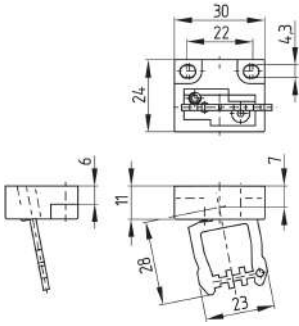
ID: kazm1gi3

| 106.0 kB | .cdr |

| 6.2 kB | .png | 74.083 x 83.961 mm - 210 x 238 px - 72 dpi

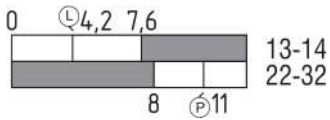
| 195.9 kB | .jpg | 352.778 x 400.403 mm - 1000 x 1135 px - 72 dpi

Dimensional drawing actuator



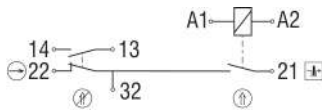
ID: 1az17b02
 | 41.2 kB | .cdr |
 | 148.6 kB | .jpg | 352.425 x 383.469 mm - 999 x 1087 px - 72 dpi
 | 18.2 kB | .png | 74.083 x 80.433 mm - 210 x 228 px - 72 dpi

Switch travel diagram



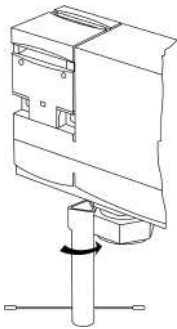
ID: kazm1s02
 | 19.7 kB | .cdr |
 | 2.0 kB | .png | 74.083 x 25.753 mm - 210 x 73 px - 72 dpi
 | 50.1 kB | .jpg | 352.778 x 123.119 mm - 1000 x 349 px - 72 dpi

Diagram



ID: kazm1k20
 | 52.4 kB | .ai | 297 x 210.002 mm - 841 x 595 px - 72 dpi
 | 45.6 kB | .jpg | 352.778 x 112.183 mm - 1000 x 318 px - 72 dpi
 | 2.6 kB | .png | 74.083 x 23.636 mm - 210 x 67 px - 72 dpi

Operating principle



ID: kazm1a70
 | 213.5 kB | .jpg | 352.778 x 656.519 mm - 1000 x 1861 px - 72 dpi
 | 6.5 kB | .png | 74.083 x 137.583 mm - 210 x 390 px - 72 dpi

Assembly example



ID: kazm1m06
 | 98.4 kB | .cdr |

The details and data referred to have been carefully checked. Images may diverge from original. Further technical data can be found in the manual. Technical amendments and errors possible.

Generated on: 11/12/2023, 6:58 am