



AZ 17-02ZRI-ST B5

- Connector M12 x 1, 4-pole
- Thermoplastic enclosure
- Double-insulated
- Long life
- 30 mm x 60 mm x 30 mm
- small body
- Individual coding
- Coding level "High" according to ISO 14119
- High level of contact reliability with low voltages and currents
- Insensitive to soiling
- Slot sealing plug included
- 8 actuating planes

Data

Ordering data

| | |
|-------------------------------|-------------------|
| Product type description | AZ 17-02ZRI-ST B5 |
| Article number (order number) | 101144084 |
| EAN (European Article Number) | 4030661130835 |
| eCl@ss number, version 12.0 | 27-27-26-02 |
| eCl@ss number, version 11.0 | 27-27-26-02 |
| eCl@ss number, version 9.0 | 27-27-26-02 |
| ETIM number, version 7.0 | EC002592 |
| ETIM number, version 6.0 | EC002592 |

General data

| | |
|--|--|
| Standards | EN ISO 13849-1 EN ISO 14119 EN IEC 60947-5-1 |
| Coding level according to EN ISO 14119 | High |

| | |
|--------------------------|---|
| Working principle | electromechanical |
| Housing material | Plastic, glass-fibre reinforced thermoplastic, self-extinguishing |
| Material of the actuator | Stainless steel |
| Gross weight | 90 g |

General data - Features

| | |
|--------------------------------|-----|
| Increased latching force | Yes |
| Number of actuating directions | 2 |
| Number of safety contacts | 2 |
| Number of cable glands | 1 |

Safety classification

| | |
|---|-----------------------------|
| Standards | EN ISO 13849-1 |
| Performance Level, up to | c |
| Category | 1 |
| B _{10D} Normally-closed contact (NC) | 2,000,000 Operations |
| Note | Electrical life on request. |
| Mission time | 20 Year(s) |

Safety classification - Fault exclusion

| | |
|--------------------------|---|
| Please note: | Can be used when fault exclusion for dangerous damage to the 1-channel mechanism is permissible and sufficient protection against manipulation is guaranteed. |
| Performance Level, up to | d |
| Category | 3 |
| Note | for 2-channel use and with suitable logic unit. |
| Mission time | 20 Year(s) |

Mechanical data

| | |
|--|----------------------|
| Mechanical life, minimum | 1,000,000 Operations |
| Latching force | 30 N |
| Positive break travel | 11 mm |
| Positive break force per NC contact, minimum | 17 N |
| Actuating speed, maximum | 2 m/s |
| Mounting | Screws |
| Type of the fixing screws | 2x M5 |

Mechanical data - Connection technique

| | |
|-------------|--|
| Termination | Connector plug M12, 4-pole, (A-coding) |
|-------------|--|

Mechanical data - Dimensions

| | |
|------------------|-------|
| Length of sensor | 30 mm |
| Width of sensor | 30 mm |
| Height of sensor | 85 mm |

Ambient conditions

| | |
|--|----------------|
| Degree of protection | IP67 |
| Ambient temperature | -30 ... +80 °C |
| Storage and transport temperature, minimum | -30 °C |
| Storage and transport temperature, maximum | +85 °C |
| Permissible installation altitude above sea level, maximum | 2,000 m |

Ambient conditions - Insulation values

| | |
|---|---------|
| Rated insulation voltage U_i | 250 VAC |
| Rated impulse withstand voltage U_{imp} | 4 kV |
| Overvoltage category | III |

Degree of pollution 3

Electrical data

| | |
|--------------------------------------|--|
| Thermal test current | 10 A |
| Required rated short-circuit current | 1,000 A |
| Switching element | Opener (NC) |
| Switching principle | slow action, positive break NC contact |
| Switching frequency | 2,000 /h |
| Material of the contacts, electrical | Silver |

Electrical data - Safety contacts

Voltage, Utilisation category AC-15 230 VAC

Current, Utilisation category AC-15 4 A

Voltage, Utilisation category DC-13 24 VDC

Current, Utilisation category DC-13 4 A

Scope of delivery

Scope of delivery Not available as spare part
Slot cover for dust-proof covering of the opening not in use

Note

Note (General) minimum actuating radius on rotating guard systems via the narrow edge of the actuator 140 mm
minimum actuating radius on hinged guards in line with the plane of the actuator 200 mm
The axis of the hinge must be 13 mm above and in a parallel plane to the top surface of the safety switch.
The actuator is not available separately.

Ordering code

Product type description:

AZ 17-(1)Z(2)I-(3)-(4)-(5)

(1)

| | |
|-----------|----------------------------|
| 11 | 1 NO contacts/1 NC contact |
| 02 | 2 NC contact |

(2)

| | |
|----------------|---------------------|
| without | Latching force 5 N |
| R | Latching force 30 N |

(3)

| | |
|----------------|-----------------|
| without | M16 cable gland |
| ST | M12 connector |

(4)

| | |
|------------|--------------|
| B1 | Actuator B1 |
| B5 | Actuator B5 |
| B6L | Actuator B6L |
| B6R | Actuator B6R |

(5)

| | |
|-------------|----------------------|
| 1637 | Gold-plated contacts |
|-------------|----------------------|

Pictures

Product picture (catalogue individual photo)



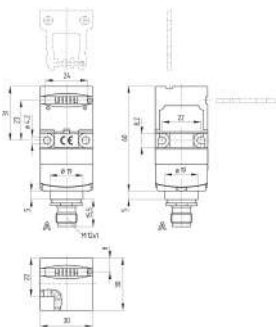
ID: kaz17fi2

| 281.9 kB | .jpg | 122.061 x 359.481 mm - 346 x 1019 px - 72 dpi

| 148.6 kB | .png | 74.083 x 218.017 mm - 210 x 618 px - 72 dpi

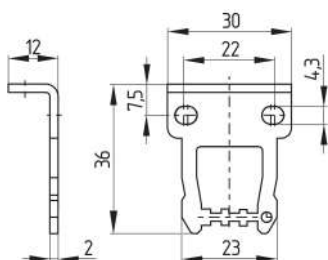
| 29.3 kB | .jpg | 41.981 x 123.472 mm - 119 x 350 px - 72 dpi

Dimensional drawing basic component



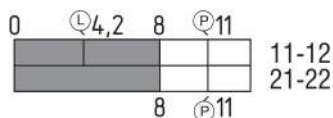
ID: kaz17gi2
| 111.5 kB | .cdr |
| 5.8 kB | .png | 74.083 x 86.783 mm - 210 x 246 px - 72 dpi
| 168.7 kB | .jpg | 352.425 x 413.456 mm - 999 x 1172 px - 72 dpi

Dimensional drawing actuator



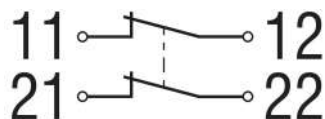
ID: 1az17b06
| 99.1 kB | .jpg | 352.778 x 277.989 mm - 1000 x 788 px - 72 dpi
| 4.8 kB | .png | 74.083 x 58.561 mm - 210 x 166 px - 72 dpi

Switch travel diagram



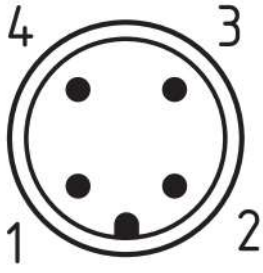
ID: kaz17s02
| 20.1 kB | .cdr |
| 2.0 kB | .png | 74.083 x 26.458 mm - 210 x 75 px - 72 dpi
| 55.6 kB | .jpg | 352.778 x 125.236 mm - 1000 x 355 px - 72 dpi

Diagram



ID: k2o--k01
| 48.8 kB | .jpg | 352.778 x 125.236 mm - 1000 x 355 px - 72 dpi
| 2.3 kB | .png | 74.083 x 26.458 mm - 210 x 75 px - 72 dpi

Contact arrangement



ID: km12-k4c

| 4.2 kB | .png | 74.083 x 74.083 mm - 210 x 210 px - 72 dpi

| 113.3 kB | .jpg | 352.778 x 352.778 mm - 1000 x 1000 px - 72 dpi

Schmersal India Pvt. Ltd., Plot No - G-7/1, Ranjangaon MIDC, Tal. - Shirur, Dist.- Pune 412 220

The details and data referred to have been carefully checked. Images may diverge from original. Further technical data can be found in the manual. Technical amendments and errors possible.

Generated on: 08/12/2023, 10:09 am