

TB 4-2L EI - Double-level terminal block



3214233

<https://www.phoenixcontact.com/in/products/3214233>

Please be informed that the data shown in this PDF document is generated from our online catalog. Please find the complete data in the user documentation. Our general terms of use for downloads are valid.



Double-level terminal block, nom. voltage: 500 V, nominal current: 32 A, number of connections: 4, connection method: Screw connection, cross section: 0.5 mm² - 6 mm², mounting type: NS 35/7,5, NS 35/15, NS 32, color: dark gray

Commercial data

Item number	3214233
Packing unit	50 pc
Minimum order quantity	50 pc
Sales key	BE1
Product key	BEK214
GTIN	4046356575379
Weight per piece (including packing)	14.298 g
Weight per piece (excluding packing)	14.298 g
Customs tariff number	85369010
Country of origin	IN

TB 4-2L EI - Double-level terminal block



3214233

<https://www.phoenixcontact.com/in/products/3214233>

Technical data

Product properties

Product type	Multi-level terminal block
Number of connections	4
Number of rows	2
Potentials	2

Data management status

Article revision	03
------------------	----

Insulation characteristics

Overvoltage category	III
Degree of pollution	3

Electrical properties

Rated surge voltage	6 kV
Maximum power dissipation for nominal condition	0.77 W

Connection data

Number of connections per level	2
---------------------------------	---

Level 1+2 above 1 below 1

Screw thread	M3
Tightening torque	0.5 ... 0.6 Nm
Stripping length	8 mm
Internal cylindrical gage	A4
Connection in acc. with standard	IEC 60947-7-1
Conductor cross section rigid	0.5 mm ² ... 6 mm ²
Cross section AWG	20 ... 10 (converted acc. to IEC)
Conductor cross section flexible	0.5 mm ² ... 4 mm ²
Conductor cross section, flexible [AWG]	20 ... 12 (converted acc. to IEC)
Conductor cross-section flexible (ferrule without plastic sleeve)	0.5 mm ² ... 4 mm ²
Flexible conductor cross section (ferrule with plastic sleeve)	0.5 mm ² ... 2.5 mm ²
Nominal current	32 A
Maximum load current	32 A (for 6 mm ²)
Nominal voltage	500 V (in the case of enclosed clamping space)

Dimensions

Width	6.2 mm
End cover width	2.5 mm
Height	67 mm
Depth on NS 32	67 mm
Depth on NS 35/7,5	62 mm
Depth on NS 35/15	69.5 mm

TB 4-2L EI - Double-level terminal block



3214233

<https://www.phoenixcontact.com/in/products/3214233>

Material specifications

Color	traffic grey B (RAL 7043)
Flammability rating according to UL 94	V2
Insulating material group	I
Insulating material	PA
Temperature index of insulation material (DIN EN 60216-1 (VDE 0304-21))	125 °C
Relative insulation material temperature index (Elec., UL 746 B)	125 °C

Electrical tests

Surge voltage test

Test voltage setpoint	7.3 kV
Result	Test passed

Temperature-rise test

Requirement temperature-rise test	Increase in temperature ≤ 45 K
Result	Test passed
Short-time withstand current 6 mm ²	0.72 kA
Short-time withstand current 4 mm ²	0.48 kA
Result	Test passed

Power-frequency withstand voltage

Test voltage setpoint	1.89 kV
Result	Test passed

Mechanical properties

Mechanical data

Open side panel	Yes
-----------------	-----

Mechanical tests

Mechanical strength

Result	Test passed
--------	-------------

Attachment on the carrier

DIN rail/fixing support	NS 32/NS 35
Test force setpoint	1 N
Result	Test passed

Test for conductor damage and slackening

Rotation speed	10 rpm
Revolutions	135
Conductor cross section/weight	0.5 mm ² / 0.3 kg
	4 mm ² / 0.9 kg
	6 mm ² / 1.4 kg

TB 4-2L EI - Double-level terminal block



3214233

<https://www.phoenixcontact.com/in/products/3214233>

Result	Test passed
--------	-------------

Environmental and real-life conditions

Needle-flame test

Time of exposure	30 s
Result	Test passed

Oscillation/broadband noise

Specification	DIN EN 50155 (VDE 0115-200):2008-03
Spectrum	Service life test category 1, class B, body mounted
Frequency	$f_1 = 5 \text{ Hz}$ to $f_2 = 150 \text{ Hz}$
ASD level	0.02g ² /Hz
Acceleration	0.8g
Test duration per axis	5 h
Test directions	X-, Y- and Z-axis
Result	Test passed

Shocks

Specification	DIN EN 50155 (VDE 0115-200):2008-03
Pulse shape	Half-sine
Acceleration	5g
Shock duration	30 ms
Number of shocks per direction	3
Test directions	X-, Y- and Z-axis (pos. and neg.)
Result	Test passed

Ambient conditions

Ambient temperature (operation)	-60 °C ... 110 °C (Operating temperature range incl. self-heating; for max. short-term operating temperature, see RTI Elec.)
Ambient temperature (storage/transport)	-25 °C ... 60 °C (for a short time, no longer than 24 h, -60°C to +70°C)
Ambient temperature (assembly)	-5 °C ... 70 °C
Ambient temperature (actuation)	-5 °C ... 70 °C
Permissible humidity (operation)	20 % ... 90 %
Permissible humidity (storage/transport)	30 % ... 70 %

Standards and regulations

Connection in acc. with standard	IEC 60947-7-1
----------------------------------	---------------

Mounting

Mounting type	NS 35/7,5
	NS 35/15
	NS 32

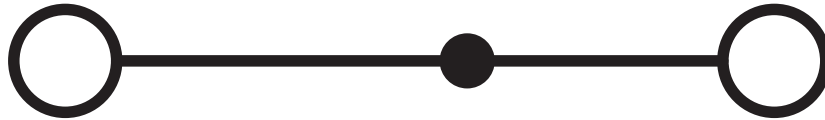
TB 4-2L EI - Double-level terminal block

3214233

<https://www.phoenixcontact.com/in/products/3214233>

Drawings

Circuit diagram



TB 4-2L EI - Double-level terminal block




3214233

<https://www.phoenixcontact.com/in/products/3214233>

Approvals

To download certificates, visit the product detail page: <https://www.phoenixcontact.com/in/products/3214233>

 cULus Recognized Approval ID: E60425				
	Nominal voltage U_N	Nominal current I_N	Cross section AWG	Cross section mm^2
Use group B	300 V	30 A	20 - 10	-
Use group C	300 V	30 A	20 - 10	-
Use group D	600 V	5 A	20 - 10	-

TB 4-2L EI - Double-level terminal block



3214233

<https://www.phoenixcontact.com/in/products/3214233>

Classifications

ECLASS

ECLASS-11.0	27141120
ECLASS-13.0	27250102

ETIM

ETIM 9.0	EC000897
----------	----------

UNSPSC

UNSPSC 21.0	39121410
-------------	----------

TB 4-2L EI - Double-level terminal block



3214233

<https://www.phoenixcontact.com/in/products/3214233>

Environmental product compliance

EU RoHS

Fulfills EU RoHS substance requirements	Yes, No exemptions
---	--------------------

China RoHS

Environment friendly use period (EFUP)	EFUP-E
	No hazardous substances above the limits

EU REACH SVHC

REACH candidate substance (CAS No.)	No substance above 0.1 wt%
-------------------------------------	----------------------------

TB 4-2L EI - Double-level terminal block

3214233

<https://www.phoenixcontact.com/in/products/3214233>

Accessories

i Note: Applying some accessories below might limit this product.

SCBI 10-6 - Fixed bridge

3246120

<https://www.phoenixcontact.com/in/products/3246120>



Fixed bridge, number of positions: 10, color: silver

i Max. current carrying capacity: 24 A

SCBI 10-6 W - Screw bridge

3000834

<https://www.phoenixcontact.com/in/products/3000834>



Screw bridge, with spring washer and insulating collar, pitch: 6.2 mm, number of positions: 10, color: silver

i Max. current carrying capacity: 24 A

TB 4-2L EI - Double-level terminal block

3214233

<https://www.phoenixcontact.com/in/products/3214233>



INB 10-6 - Insertion bridge

3246188

<https://www.phoenixcontact.com/in/products/3246188>



Insertion bridge, Bridging in the terminal point, pitch: 6 mm, number of positions: 10, color: gray

 Max. current carrying capacity: 24 A

TS-TB-2L - Separating plate

3062841

<https://www.phoenixcontact.com/in/products/3062841>



Separating plate, for electrical isolation of neighboring bridges in the terminal center, depth: 14 mm, width: 0.5 mm, height: 16 mm, color: dark gray

TB 4-2L EI - Double-level terminal block

3214233

<https://www.phoenixcontact.com/in/products/3214233>



DP-TB-2L - Spacer plate

3059977

<https://www.phoenixcontact.com/in/products/3059977>



Spacer plate, compensates for the offset at the lower level when standard terminal blocks are mounted side-by-side, depth: 25 mm, width: 2.5 mm, height: 67.2 mm, color: dark gray

NS 32 PERF 2000MM-VPE 10 - DIN rail perforated

1201002

<https://www.phoenixcontact.com/in/products/1201002>



DIN rail perforated, Pack of 10 (20 m), acc. to EN 60715, material: Steel, galvanized, passivated with a thick layer, G profile, color: silver

TB 4-2L EI - Double-level terminal block

3214233

<https://www.phoenixcontact.com/in/products/3214233>



NS 32 UNPERF 2000MM-VPE 10 - DIN rail, unperforated

1201015

<https://www.phoenixcontact.com/in/products/1201015>



DIN rail, unperforated, Pack of 10 (20 m), acc. to EN 60715, material: Steel, galvanized, passivated with a thick layer, G profile, color: silver

MPS-MT - Test plug

0201744

<https://www.phoenixcontact.com/in/products/0201744>



Test plug, with solder connection up to 1 mm² conductor cross section, number of positions: 1, color: gray

TB 4-2L EI - Double-level terminal block

3214233

<https://www.phoenixcontact.com/in/products/3214233>



MPS-IH WH - Insulating sleeve

0201663

<https://www.phoenixcontact.com/in/products/0201663>

Insulating sleeve, color: white



MPS-IH RD - Insulating sleeve

0201676

<https://www.phoenixcontact.com/in/products/0201676>

Insulating sleeve, color: red



TB 4-2L EI - Double-level terminal block

3214233

<https://www.phoenixcontact.com/in/products/3214233>

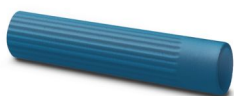


MPS-IH BU - Insulating sleeve

0201689

<https://www.phoenixcontact.com/in/products/0201689>

Insulating sleeve, color: blue



MPS-IH YE - Insulating sleeve

0201692

<https://www.phoenixcontact.com/in/products/0201692>

Insulating sleeve, color: yellow



TB 4-2L EI - Double-level terminal block

3214233

<https://www.phoenixcontact.com/in/products/3214233>

MPS-IH GN - Insulating sleeve

0201702

<https://www.phoenixcontact.com/in/products/0201702>

Insulating sleeve, color: green



MPS-IH GY - Insulating sleeve

0201728

<https://www.phoenixcontact.com/in/products/0201728>

Insulating sleeve, color: gray



TB 4-2L EI - Double-level terminal block

3214233

<https://www.phoenixcontact.com/in/products/3214233>



MPS-IH BK - Insulating sleeve

0201731

<https://www.phoenixcontact.com/in/products/0201731>

Insulating sleeve, color: black



SZS 0,6X3,5 VDE - Screwdriver

1212602

<https://www.phoenixcontact.com/in/products/1212602>

Screwdriver, slot-headed, VDE insulated, size: 0.6 x 3.5 x 100 mm, 2-component grip, with non-slip grip



TB 4-2L EI - Double-level terminal block

3214233

<https://www.phoenixcontact.com/in/products/3214233>



E/TB H - End bracket

3246973

<https://www.phoenixcontact.com/in/products/3246973>



End clamps, for supporting the ends of double-level and three-level terminal blocks, width: 10 mm, color: gray

Phoenix Contact 2024 © - all rights reserved

<https://www.phoenixcontact.com>

PHOENIX CONTACT (I) Pvt. Ltd.

A-58/2, Okhla Industrial Area, Phase - II, New Delhi-110 020

+91.1275.71420

info@phoenixcontact.co.in