

A 1 - 8 - Ferrule

3202517

<https://www.phoenixcontact.com/in/products/3202517>

Please be informed that the data shown in this PDF document is generated from our online catalog. Please find the complete data in the user documentation. Our general terms of use for downloads are valid.

Ferrule, sleeve length: 8 mm, color: silver



Your advantages

- The ferrules without plastic sleeve are made from soft tin-plated electrolytic copper

Commercial data

| | |
|--------------------------------------|---------------------|
| Item number | 3202517 |
| Packing unit | 1,000 pc |
| Minimum order quantity | 1,000 pc |
| Sales key | BH3 |
| Product key | BH3412 |
| Catalog page | Page 480 (C-3-2019) |
| GTIN | 4017918157210 |
| Weight per piece (including packing) | 0.055 g |
| Weight per piece (excluding packing) | 0.055 g |
| Customs tariff number | 85369010 |
| Country of origin | DE |

A 1 - 8 - Ferrule

3202517

<https://www.phoenixcontact.com/in/products/3202517>

Technical data

Notes

| | |
|---------|---|
| General | These ferrules are not included in DIN 46228-1: 1992-08 |
|---------|---|

Product properties

| | |
|--------------------|---|
| Product type | Cable end sleeve |
| Conductor category | stranded conductors, class 2, 5, 6 / B, C, K, M |

Data management status

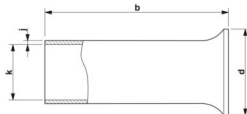
| | |
|------------------|----|
| Article revision | 05 |
|------------------|----|

Connection data

Conductor connection

| | |
|---------------------------------------|-------------------|
| Conductor cross section flexible max. | 1 mm ² |
| Conductor cross section AWG max. | 18 |
| Stripping length | 8 mm |

Dimensions

| | |
|---|--|
| Dimensional drawing |  |
| Sleeve length | 8 mm |
| Maximum stripping length | 8 mm |
| Ferrule diameter | 1.4 mm |
| Sleeve wall thickness | 0.15 mm |
| Inner dimensions of the insulating collar | 2.5 mm |

Material specifications

| | |
|----------|-----------------------|
| Color | silver |
| Material | CU-DHP |
| Coating | tin-plated (galvanic) |

Mechanical properties

Technical data

| | |
|---------------|------|
| Sleeve length | 8 mm |
|---------------|------|

Environmental and real-life conditions

Ambient conditions

| | |
|------------------------|--------|
| Permanent temperature | 105 °C |
| Short-term temperature | 120 °C |

A 1 - 8 - Ferrule

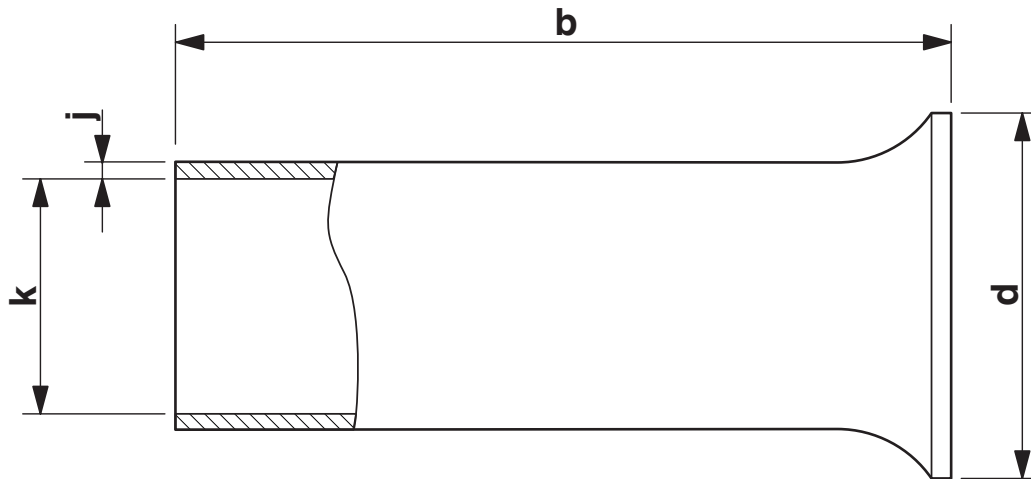
3202517

<https://www.phoenixcontact.com/in/products/3202517>



Drawings

Dimensional drawing



Sleeve length (b), insulating collar inner dimension (d), sleeve diameter (k), sleeve wall thickness (j)

A 1 - 8 - Ferrule

3202517

<https://www.phoenixcontact.com/in/products/3202517>



Classifications

ECLASS

| | |
|-------------|----------|
| ECLASS-11.0 | 27400201 |
| ECLASS-13.0 | 27400201 |
| ECLASS-12.0 | 27400201 |

ETIM

| | |
|----------|----------|
| ETIM 9.0 | EC000005 |
|----------|----------|

UNSPSC

| | |
|-------------|----------|
| UNSPSC 21.0 | 27121700 |
|-------------|----------|

A 1 - 8 - Ferrule



3202517

<https://www.phoenixcontact.com/in/products/3202517>

Environmental product compliance

EU RoHS

| | |
|---|--------------------|
| Fulfills EU RoHS substance requirements | Yes, No exemptions |
|---|--------------------|

China RoHS

| | |
|--|--|
| Environment friendly use period (EFUP) | EFUP-E |
| | No hazardous substances above the limits |

EU REACH SVHC

| | |
|-------------------------------------|----------------------------|
| REACH candidate substance (CAS No.) | No substance above 0.1 wt% |
|-------------------------------------|----------------------------|

A 1 - 8 - Ferrule

3202517

<https://www.phoenixcontact.com/in/products/3202517>

Accessories

CRIMPFOX CENTRUS 6S - Crimping pliers

1213144

<https://www.phoenixcontact.com/in/products/1213144>



Crimping pliers, for uninsulated and insulated ferrules, DIN 46228 Part 1 and 4, from 0.14 mm² ... 6 mm², also for TWIN ferrules up to 2 x 4 mm², automatic cross section adjustment, lateral insertion, equipped with fall protection

CRIMPFOX CENTRUS 6H - Crimping pliers

1213146

<https://www.phoenixcontact.com/in/products/1213146>



Crimping pliers, for uninsulated and insulated ferrules, DIN 46228 Part 1 and 4, from 0.14 mm² ... 6 mm², also for TWIN ferrules up to 2 x 4 mm², automatic cross section adjustment, lateral insertion, equipped with fall protection

A 1 - 8 - Ferrule

3202517

<https://www.phoenixcontact.com/in/products/3202517>

CRIMPFOX CENTRUS 10S - Crimping pliers

1213154

<https://www.phoenixcontact.com/in/products/1213154>



Crimping pliers, for uninsulated and insulated ferrules, DIN 46228 Part 1 and 4, from 0.14 mm² ... 10 mm², also for TWIN ferrules up to 2 x 4 mm², automatic cross section adjustment, lateral insertion, equipped with fall protection

CRIMPFOX CENTRUS 10H - Crimping pliers

1213156

<https://www.phoenixcontact.com/in/products/1213156>



Crimping pliers, for uninsulated and insulated ferrules, DIN 46228 Part 1 and 4, from 0.14 mm² ... 10 mm², also for TWIN ferrules up to 2 x 4 mm², automatic cross section adjustment, lateral insertion, equipped with fall protection

A 1 - 8 - Ferrule

3202517

<https://www.phoenixcontact.com/in/products/3202517>

CRIMPFOX 2,5-M - Crimping pliers

1212719

<https://www.phoenixcontact.com/in/products/1212719>



Crimping pliers, for ferrules without insulating collar according to DIN 46228 Part 1 and ferrules with insulating collar according to DIN 46228 Part 4, 0.25 mm² ... 2.5 mm², lateral entry, trapezoidal crimp

CRIMPFOX 6-M - Crimping pliers

1212720

<https://www.phoenixcontact.com/in/products/1212720>



Crimping pliers, for ferrules without insulating collar according to DIN 46228 Part 1 and ferrules with insulating collar according to DIN 46228 Part 4, 0.25 mm² ... 6.0 mm², lateral entry, trapezoidal crimp

A 1 - 8 - Ferrule

3202517

<https://www.phoenixcontact.com/in/products/3202517>

CRIMPFOX 6 - Crimping pliers

1212034

<https://www.phoenixcontact.com/in/products/1212034>



Crimping pliers, for ferrules without insulating collar according to DIN 46228 Part 1 and ferrules with insulating collar according to DIN 46228 Part 4, 0.25 mm² ... 6.0 mm², lateral entry, trapezoidal crimp

CRIMPFOX DUO 10 - Crimping pliers

1031721

<https://www.phoenixcontact.com/in/products/1031721>



Crimping pliers, contact connection type: Insulated and uninsulated ferrules, standards/specifications: DIN 46228-1, DIN 46228-4, UL 486F, form A, E, F, min. cross section: 0.14 mm², max. cross section: 10 mm², for TWIN ferrules up to 2 x 4 mm², automatic cross section adjustment, rotating die, lateral and frontal insertion, compression: Trapezoidal crimp, black/green

A 1 - 8 - Ferrule

3202517

<https://www.phoenixcontact.com/in/products/3202517>



CRIMPFOX 10T-F - Crimping pliers

1134913

<https://www.phoenixcontact.com/in/products/1134913>



Crimping pliers, contact connection type: Insulated and uninsulated ferrules, standards/specifications: DIN 46228-1, DIN 46228-4, min. cross section: 0.14 mm², max. cross section: 10 mm², For TWIN ferrules up to 2 x 4 mm², automatic cross section adjustment, frontal insertion, compression: Trapezoidal crimp, black

CRIMPFOX DUO 16S - Crimping pliers

1202877

<https://www.phoenixcontact.com/in/products/1202877>



Crimping pliers, contact type: insulated and uninsulated ferrules, standards/regulations: DIN 46228-1, DIN 46228-4, UL 486F, Form A, E, F, cross-section, minimum: 0.14 mm², cross-section, maximum: 16 mm², for TWIN ferrules up to 2 mm² x 6 mm², automatic cross-section adjustment, rotating dies, lateral and front entry, crimping: square

Phoenix Contact 2024 © - all rights reserved
<https://www.phoenixcontact.com>

PHOENIX CONTACT (I) Pvt. Ltd.
A-58/2, Okhla Industrial Area, Phase - II, New Delhi-110 020

+91.1275.71420
info@phoenixcontact.co.in