

RIF-LDP-12-24 DC - Plug-in module



2900939

<https://www.phoenixcontact.com/in/products/2900939>

Please be informed that the data shown in this PDF document is generated from our online catalog. Please find the complete data in the user documentation. Our general terms of use for downloads are valid.



Plug-in module, for mounting on RIF-1, RIF-2, RIF-3, and RIF-4, with freewheeling diode and yellow LED, polarity: A1+, A2-, input voltage: 12 V DC ... 24 V DC $\pm 30\%$

Commercial data

Item number	2900939
Packing unit	10 pc
Minimum order quantity	10 pc
Sales key	CK6
Product key	CK6545
Catalog page	Page 316 (C-5-2019)
GTIN	4046356733069
Weight per piece (including packing)	3.07 g
Weight per piece (excluding packing)	2.742 g
Customs tariff number	85363010
Country of origin	CN

RIF-LDP-12-24 DC - Plug-in module



2900939

<https://www.phoenixcontact.com/in/products/2900939>

Technical data

Product properties

Product type	Plug-in module
Product family	RIFLINE complete

Data management status

Article revision	03
------------------	----

Electrical properties

Nominal voltage U_N	12 V DC ... 24 V DC
-----------------------	---------------------

Input data

Input voltage range	12 V DC ... 24 V DC $\pm 30\%$
Status display	LED (yellow)
Protective circuit	Freewheeling diode

Approvals

Corrosive gas test

Identification	ISA-S71.04. G3 Harsh Group
	EN 60068-2-60

RIF-LDP-12-24 DC - Plug-in module



2900939

<https://www.phoenixcontact.com/in/products/2900939>

Approvals

To download certificates, visit the product detail page: <https://www.phoenixcontact.com/in/products/2900939>



CSA

Approval ID: 76787



UL Recognized

Approval ID: FILE E 113228



DNV GL

Approval ID: TAA000018V



DNV GL

Approval ID: TAA000018V

RIF-LDP-12-24 DC - Plug-in module



2900939

<https://www.phoenixcontact.com/in/products/2900939>

Classifications

ECLASS

ECLASS-11.0	27371692
ECLASS-12.0	27371692
ECLASS-13.0	27371692

ETIM

ETIM 9.0	EC002586
----------	----------

UNSPSC

UNSPSC 21.0	39122300
-------------	----------

2900939

<https://www.phoenixcontact.com/in/products/2900939>

Environmental product compliance

EU RoHS

Fulfills EU RoHS substance requirements	Yes
Exemption	7(a), 7(c)-I

China RoHS

Environment friendly use period (EFUP)	EFUP-50
	An article-related China RoHS declaration table can be found in the download area for the respective article under "Manufacturer declaration". For all articles with EFUP-E, no China RoHS declaration table issued and required.

EU REACH SVHC

REACH candidate substance (CAS No.)	Lead(CAS: 7439-92-1)
SCIP	27984f30-8d35-4c5a-bcb8-c33fa00cc9a0

EF3.0 Climate Change

CO2e kg	0.035 kg CO2e
---------	---------------

RIF-LDP-12-24 DC - Plug-in module

2900939

<https://www.phoenixcontact.com/in/products/2900939>

Mandatory accessories

RIF-1-BSC/2X21 - Relay base

2900930

<https://www.phoenixcontact.com/in/products/2900930>



RIF-1... relay base, for miniature power relay with 1 or 2 changeover contacts or identical solid-state relays, screw connection, plug-in option for input/interference suppression modules, for mounting on NS 35/7,5

RIF-1-BPT/2X21 - Relay base

2900931

<https://www.phoenixcontact.com/in/products/2900931>



Relay base RIF-1..., for miniature power relay with 1 or 2 changeover contacts or solid-state relays of the same design, Push-in connection, plug-in option for input/interference suppression modules, for mounting on NS 35/7,5

RIF-LDP-12-24 DC - Plug-in module

2900939

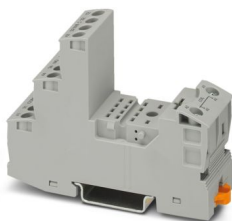
<https://www.phoenixcontact.com/in/products/2900939>



RIF-2-BSC/4X21 - Relay base

2900932

<https://www.phoenixcontact.com/in/products/2900932>



RIF-2... relay base, for industrial relay with 2 or 4 changeover contacts, screw connection, plug-in option for input/interference suppression modules, for mounting on NS 35/7,5

RIF-2-BPT/4X21 - Relay base

2900934

<https://www.phoenixcontact.com/in/products/2900934>



Relay base RIF-2..., for industrial relay with 2 or 4 changeover contacts, Push-in connection, plug-in option for input/interference suppression modules, for mounting on NS 35/7,5

RIF-LDP-12-24 DC - Plug-in module

2900939

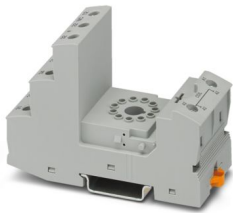
<https://www.phoenixcontact.com/in/products/2900939>



RIF-3-BSC/3X21 - Relay base

2900936

<https://www.phoenixcontact.com/in/products/2900936>



RIF-3... relay base, for octal relay with 3 changeover contacts, screw connection, plug-in option for input/interference suppression modules, for mounting on NS 35/7,5

RIF-3-BPT/3X21 - Relay base

2900938

<https://www.phoenixcontact.com/in/products/2900938>



Relay base RIF-3..., for octal relays with 3 changeover contacts, Push-in connection, plug-in option for input/interference suppression modules, for mounting on NS 35/7,5

RIF-LDP-12-24 DC - Plug-in module

2900939

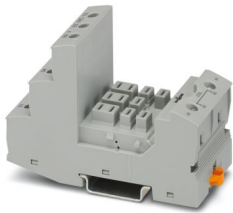
<https://www.phoenixcontact.com/in/products/2900939>



RIF-4-BSC/3X21 - Relay base

2900960

<https://www.phoenixcontact.com/in/products/2900960>

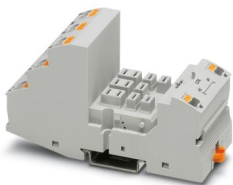


RIF-4... relay base, for high-power relay with 2 or 3 changeover contacts or 3 N/O contacts, screw connection, plug-in option for input/interference suppression modules, for mounting on NS 35/7,5

RIF-4-BPT/3X21 - Relay base

2900961

<https://www.phoenixcontact.com/in/products/2900961>



Relay base RIF-4..., for high-power relay with 2 or 3 changeover contacts or 3 N/O contacts, Push-in connection, plug-in option for input/interference suppression modules, for mounting on NS 35/7,5

Phoenix Contact 2024 © - all rights reserved
<https://www.phoenixcontact.com>

PHOENIX CONTACT (I) Pvt. Ltd.
A-58/2, Okhla Industrial Area, Phase - II, New Delhi-110 020

+91.1275.71420
info@phoenixcontact.co.in