

# VS-08-BU-RJ45/BU - RJ45 coupling



1689064

<https://www.phoenixcontact.com/in/products/1689064>

Please be informed that the data shown in this PDF document is generated from our online catalog. Please find the complete data in the user documentation. Our general terms of use for downloads are valid.



RJ45 coupling, degree of protection: IP20, number of positions: 8, 1 Gbps, CAT5, material: Plastic, connection method: Coupling, Keystone, Ethernet

## Your advantages

- Keystone adapter
- Transmission rate up to 1000 Mbps

## Commercial data

Item number	1689064
Packing unit	5 pc
Minimum order quantity	5 pc
Sales key	ABN
Product key	ABNACB
Catalog page	Page 351 (C-2-2019)
GTIN	4017918876937
Weight per piece (including packing)	9.648 g
Weight per piece (excluding packing)	9 g
Customs tariff number	85366990
Country of origin	DE

# VS-08-BU-RJ45/BU - RJ45 coupling



1689064

<https://www.phoenixcontact.com/in/products/1689064>

## Technical data

### Product properties

Product type	Female insert
Type	RJ45
Sensor type	Ethernet
Number of positions	8
Connection profile	RJ45
Number of slots	1
Type	Socket
Shielded	yes

### Data management status

Article revision	04
------------------	----

### Insulation characteristics

Overvoltage category	II
Degree of pollution	2

### Electrical properties

Rated voltage (III/3)	72 V (DC)
Rated current	1.5 A
Insulation resistance	$\geq 500 \text{ M}\Omega$
Contact resistance	20 m $\Omega$
Transmission medium	Copper
Transmission characteristics (category)	CAT5

### Connection data

#### Connection technology

Connection method	Coupling
-------------------	----------

### Dimensions

Width	22.1 mm
Length	34.5 mm
Drill hole distance, horizontal	22 mm

### Material specifications

Flammability rating according to UL 94	V0
Housing material	Plastic
Housing surface material	metal-plated
Contact material	Copper alloy
Contact surface material	Gold
Contact carrier material	ABS

# VS-08-BU-RJ45/BU - RJ45 coupling



1689064

<https://www.phoenixcontact.com/in/products/1689064>

## Cable/line

Test voltage Core/Core	1000 V
Test voltage Core/Shield	1500.00 V

## Mechanical properties

### Mechanical data

Insertion/withdrawal cycles	≥ 1000
-----------------------------	--------

## Environmental and real-life conditions

### Ambient conditions

Degree of protection	IP20
Ambient temperature (operation)	-20 °C ... 70 °C
Ambient temperature (storage/transport)	-40 °C ... 85 °C

# VS-08-BU-RJ45/BU - RJ45 coupling



1689064

<https://www.phoenixcontact.com/in/products/1689064>

## Classifications

### ECLASS

ECLASS-11.0	27440223
ECLASS-12.0	27440223
ECLASS-13.0	27460201

### ETIM

ETIM 9.0	EC002637
----------	----------

### UNSPSC

UNSPSC 21.0	39121400
-------------	----------

# VS-08-BU-RJ45/BU - RJ45 coupling



1689064

<https://www.phoenixcontact.com/in/products/1689064>

## Environmental product compliance

### EU RoHS

Fulfills EU RoHS substance requirements	Yes, No exemptions
---	--------------------

### China RoHS

Environment friendly use period (EFUP)	EFUP-E
	No hazardous substances above the limits

### EU REACH SVHC

REACH candidate substance (CAS No.)	No substance above 0.1 wt%
-------------------------------------	----------------------------

# VS-08-BU-RJ45/BU - RJ45 coupling

1689064

<https://www.phoenixcontact.com/in/products/1689064>

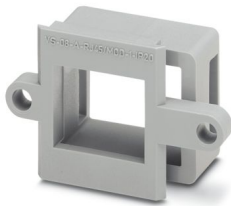


## Accessories

### VS-08-A-RJ45/MOD-1-IP20 - Panel-mount frame

1689433

<https://www.phoenixcontact.com/in/products/1689433>



RJ45 panel mounting frame, 1x, IP20, for modular socket inserts (Keystone), without mounting screws

---

### VS-08-A-RJ45/MOD-1-R-IP67 - Panel-mount frame

1689844

<https://www.phoenixcontact.com/in/products/1689844>



RJ45 panel mounting frame, IP67, for modular socket inserts (Keystone), for round panel cutout, with grommet, with thread and union nut, color: gray

# VS-08-BU-RJ45/BU - RJ45 coupling

1689064

<https://www.phoenixcontact.com/in/products/1689064>



## VS-08-A-RJ45/MOD-1-IP67 - Panel-mount frame

1689080

<https://www.phoenixcontact.com/in/products/1689080>



RJ45 panel mounting frame, IP67, for modular socket inserts (Keystone), for square panel cutout, with grommet, without mounting screws, color: gray

---

## VS-08-A-RJ45/MOD-1-R-IP67 BK - Panel-mount frame

1658053

<https://www.phoenixcontact.com/in/products/1658053>



RJ45 panel mounting frame, IP67, for modular socket inserts (Keystone), for round panel cutout, with grommet, with thread and union nut, color: black

# VS-08-BU-RJ45/BU - RJ45 coupling

1689064

<https://www.phoenixcontact.com/in/products/1689064>



## VS-08-A-RJ45/MOD-1-IP67-BK - Panel-mount frame

1658642

<https://www.phoenixcontact.com/in/products/1658642>



RJ45 panel mounting frame, IP67, for modular socket inserts (Keystone), for square panel cutout, with grommet, without mounting screws, color: black

---

Phoenix Contact 2024 © - all rights reserved

<https://www.phoenixcontact.com>

PHOENIX CONTACT (I) Pvt. Ltd.

A-58/2, Okhla Industrial Area, Phase - II, New Delhi-110 020

+91.1275.71420

[info@phoenixcontact.co.in](mailto:info@phoenixcontact.co.in)