

# BTP 2102W - Touch panel



1046667

<https://www.phoenixcontact.com/in/products/1046667>

Please be informed that the data shown in this PDF document is generated from our Online Catalog. Please find the complete data in the user documentation. Our General Terms of Use for Downloads are valid.



Touch panel with 25.7 cm / 10.1" TFT-display (analog resistive), 1024 x 600 pixel(s) (WSVGA), 16.7 million colors, Arm<sup>®</sup> Cortex<sup>®</sup>-A7, 528 MHz i.MX6 UL, 2x COM (RS-232/422/485), 1x USB 2.0, Typ A, 1x USB 2.0, Typ B, 1 x Ethernet (10/100 Mbps), RJ45, Windows<sup>®</sup> Embedded Compact 7 and user software: Visu+. (bus system: without)

## Your advantages

- Visu+ RT integrated as standard in all BTP 2000 devices
- Connection to all relevant control systems, thanks to a large number of available drivers
- Developed for basic applications with attractive price/performance ratio
- 3 display sizes in 16:9 format

## Commercial Data

Item number	1046667
Packing unit	1 pc
Minimum order quantity	1 pc
Sales Key	DRC
Product Key	DRCEBC
Catalog Page	Page 471 (C-6-2019)
GTIN	4055626644103
Weight per Piece (including packing)	1,115 g
Weight per Piece (excluding packing)	900 g
Customs tariff number	84714100
Country of origin	IN

## Technical Data

### Product properties

Product type	Operator panel
--------------	----------------

### Computer data

Processor	Arm® Cortex®-A7, 528 MHz i.MX6 UL
Operating system	Windows® Embedded Compact 7
RAM	512 MB DDR3 SDRAM
Data storage system	eMMC, 4 GB
Slots	1x SD

### Display

Display type	25.7 cm / 10.1" TFT
Screen resolution	1024 x 600 Pixel(s) (WSVGA)
Touch technology	analog resistive
Display lighting type	LED
Brightness	350 cd/m², typical (adjustable)
MTBF	25000 h
Color spectrum	16.7 million colors
Reading angle left	65 °
Reading angle right	65 °
Reading angle top	45 °
Reading angle bottom	65 °

### Software

User software	Visu+
---------------	-------

### Interfaces

Interfaces	2x COM (RS-232/422/485)
	1x USB 2.0, Typ A
	1x USB 2.0, Typ B
Network	1 x Ethernet (10/100 Mbps), RJ45
Bus system	without

### System properties

User software	Visu+
---------------	-------

### Electrical properties

#### Supply

Power supply unit	24 V DC ±15 %
Typical current consumption	0.3 A

### Mounting

# BTP 2102W - Touch panel



1046667

<https://www.phoenixcontact.com/in/products/1046667>

Mounting type	Front mounting
---------------	----------------

## Material specifications

Housing material	Plastic
------------------	---------

## Environmental and real-life conditions

### Ambient conditions

Degree of protection	IP66 (front), IP20 (back)
Ambient temperature (operation)	0 °C ... 50 °C
Ambient temperature (storage/transport)	-20 °C ... 85 °C
Permissible humidity (operation)	10 % ... 95 % (non-condensing)
Permissible humidity (storage/transport)	10 % ... 95 % (non-condensing)
Shock	DIN EN 60068-2-27
Vibration (operation)	DIN EN 60068-2-6

## Dimensions

### External dimensions

Width / Height / Depth	268 mm / 190 mm / 5 mm (Dimensions of the front plate)
------------------------	--

### Installation dimensions

Width / Height / Installation depth	256 mm / 178 mm / 33 mm (Installation cutout)
-------------------------------------	---

# BTP 2102W - Touch panel



1046667

<https://www.phoenixcontact.com/in/products/1046667>

## Approvals



**EAC**

Approval ID: RU C-DE.A\*08.B01708



**EAC-RoHS**

Approval ID: RU\*-DE\*35.B.00394/20



**cUL Listed**

Approval ID: FILE E 196811



**UL Listed**

Approval ID: FILE E 196811

# BTP 2102W - Touch panel



1046667

<https://www.phoenixcontact.com/in/products/1046667>

## Classifications

### ECLASS

ECLASS-11.0	27330201
ECLASS-12.0	27330201
ECLASS-13.0	27330201

### ETIM

ETIM 8.0	EC001412
----------	----------

### UNSPSC

UNSPSC 21.0	43211900
-------------	----------

# BTP 2102W - Touch panel

1046667

<https://www.phoenixcontact.com/in/products/1046667>



## Environmental Product Compliance

REACH SVHC	Lead 7439-92-1
China RoHS	Environmentally Friendly Use Period = 50 years
	For information on hazardous substances, refer to the manufacturer's declaration available under "Downloads"

# BTP 2102W - Touch panel

1046667

<https://www.phoenixcontact.com/in/products/1046667>



## Accessories

### TOUCH PEN - Touch pen

2701379

<https://www.phoenixcontact.com/in/products/2701379>



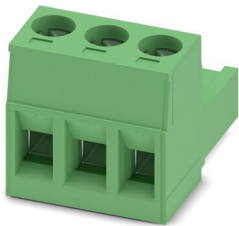
Touch pen for analog-resistive HMI, silver coated. Delivery includes self-adhesive pen holder.

---

### MSTB 2,5/ 3-ST-5,08 - PCB connector

1757022

<https://www.phoenixcontact.com/in/products/1757022>



PCB connector, nominal cross section: 2.5 mm<sup>2</sup>, color: green, nominal current: 12 A, rated voltage (III/2): 320 V, contact surface: Tin, type of contact: Socket, number of potentials: 3, number of rows: 1, number of positions: 3, number of connections: 3, product range: MSTB 2,5/..-ST, pitch: 5.08 mm, connection method: Screw connection with tension sleeve, screw head form: L Slotted, conductor/PCB connection direction: 0 °, locking clip: - Locking clip, plug-in system: COMBICON MSTB 2,5, locking: without, mounting: without, type of packaging: packed in cardboard

---

Phoenix Contact 2023 © - all rights reserved

<https://www.phoenixcontact.com>

PHOENIX CONTACT (I) Pvt. Ltd.

A-58/2, Okhla Industrial Area, Phase - II, New Delhi-110 020

+91.1275.71420

[info@phoenixcontact.co.in](mailto:info@phoenixcontact.co.in)