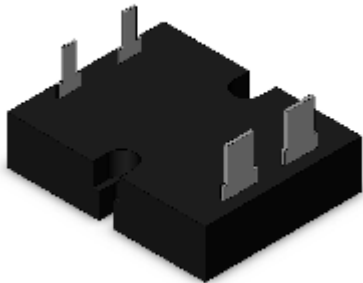


Solid State Relays

G3NE-220T-US DC24



Image

Solid State Relay, Phototriac, Applied output load: 20 A at 100 to 240 VAC, With Zero cross function, #110 input terminals, Certified by UL, CSA, and EN (TUV), Rated input voltage: 24 VDC

Product classification	For single-phase heater
Zero cross function	Equipped
Operating indicator	None
Rated voltage	24 VDC
Rated load voltage	100 to 240 VAC
Load current	0.1 to 20 A (With heat sink at 40 °C) 0.1 to 5 A (Without a heat sink at 40 °C)
Terminal structure	Tab terminal (Input: #110, Output: #250)

Ratings / Performance

As of July 25, 2024

Ratings

Product classification		For single-phase heater
Number of phases		Single-phase
Isolation method		Phototriac
Zero cross function		Equipped
Operating indicator		None
Terminal structure		Tab terminal (Input: #110, Output: #250)
Mounting		Screw mounting
Input	Rated voltage	24 VDC
	Operating voltage range	19.2 to 28.8 VDC
	Input impedance	1.6 kΩ±20%
	Operate voltage	19.2 V max.DC
	Release voltage	1 V min.DC
Output	Rated load voltage	100 to 240 VAC
	Load voltage range	75 to 264 VAC
	Load current	0.1 to 20 A (With heat sink at 40 °C) 0.1 to 5 A (Without a heat sink at 40 °C)
	Inrush current resistivity	220 A (60 Hz 1 cycle)

Performance

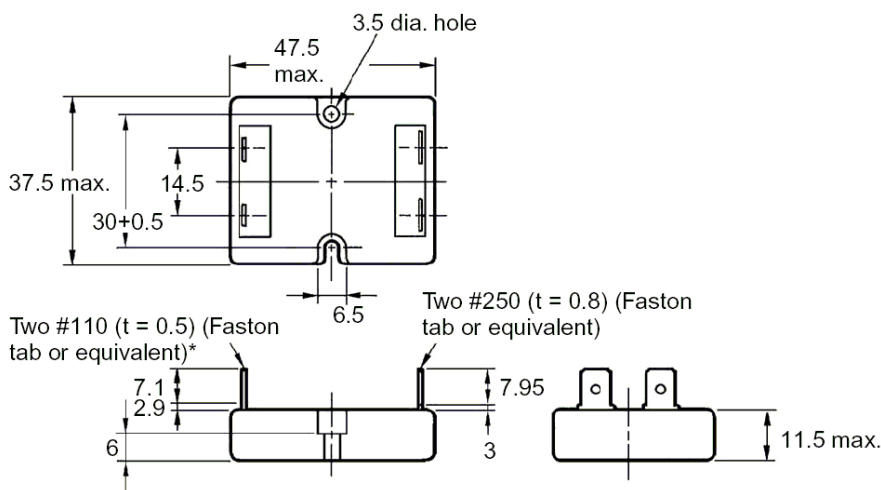
Operate time	1/2 cycle of load power source + 1 ms max.
Release time	1/2 cycle of load power source + 1 ms max.
Output ON voltage drop	1.6 V max. (RMS)

Leakage current	2 mA max. (at 100 VAC) 5 mA max. (at 200 VAC)
Insulation resistance	100 MΩ min. (at 500 VDC)
Dielectric strength	2000 VAC 50/60 Hz 1 min
Vibration resistance	10 to 55 to 10 Hz, 0.75 mm single amplitude (1.5 mm double amplitude)
Shock resistance	1000 m/s ²
Ambient temperature (Operating)	-30 to 80 °C (with no freezing or condensation)
Ambient temperature (Storage)	-30 to 100 °C (with no freezing or condensation)
Ambient humidity (Operating)	45 to 85 %
Weight	Approx. 37 g
Other feature	Certified by UL, CSA, and EN (TUV)

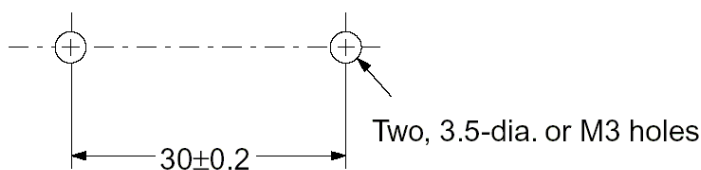
As of July 25, 2024

Outline drawing

As of July 25, 2024



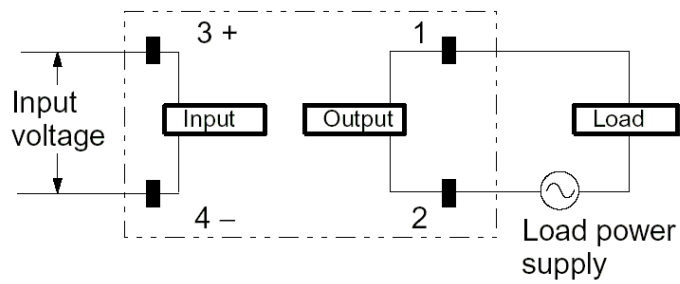
Mounting holes



Connection diagram

As of July 25, 2024

Terminal arrangement and internal connection

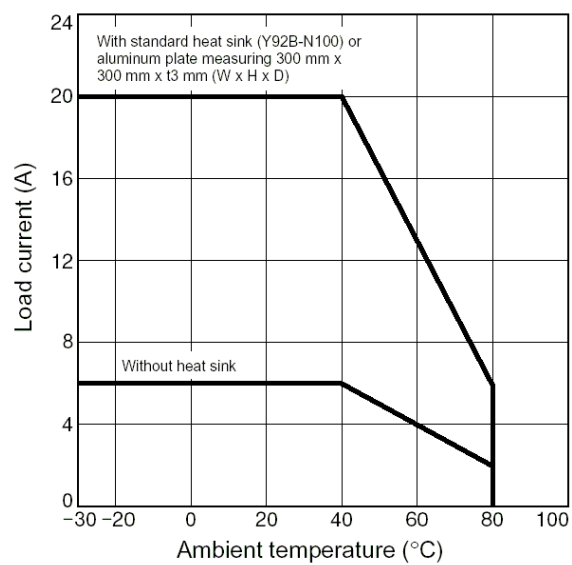


As of July 25, 2024

Characteristic chart

As of July 25, 2024

Load current-ambient temperature

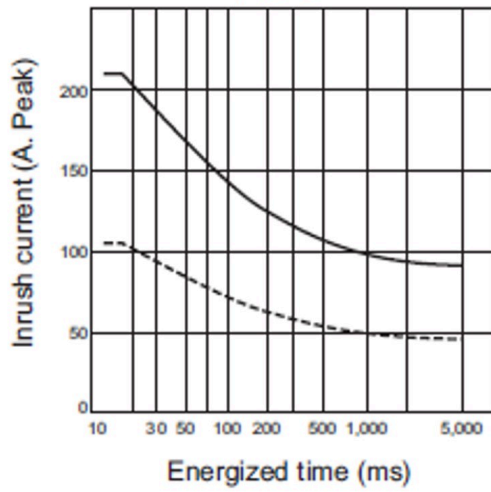


Inrush current resistivity (Non-repetitive)

One Cycle Surge Current: Non-repetitive

Note: Keep the inrush current to half the rated value if it occurs repetitively.

G3NE-220T(L)(-2)-US



As of July 25, 2024